

## Product datasheet for **RC205634**

### **MS4A8B (MS4A8) (NM\_031457) Human Tagged ORF Clone**

#### Product data:

Product Type:	Expression Plasmids
Product Name:	MS4A8B (MS4A8) (NM_031457) Human Tagged ORF Clone
Tag:	Myc-DDK
Symbol:	MS4A8B
Synonyms:	4SPAN4; CD20L5; MS4A4; MS4A8B
Mammalian Cell Selection:	Neomycin
Vector:	pCMV6-Entry (PS100001)
E. coli Selection:	Kanamycin (25 ug/mL)
ORF Nucleotide Sequence:	>RC205634 ORF sequence Red=Cloning site Blue=ORF Green=Tags(s)

TTTTGTAATACGACTCACTATAGGGCGCCGGGAATTCGTCGACTGGATCCGGTACCGAGGAGATCTGCC  
GCC**CGATCGCC**

ATGAATTCGATGACTTCAGCAGTTCGGTGGCCAATTCTGTGTTGGTGGTGGCACCCACAATGGTTATC  
CTGTGACCCAGGAATTATGTCTCACGTGCCCTGTATCCAAACAGCCAGCCGCAAGTCCACCTAGTTCC  
TGGGAACCCACCTAGTTTGGTGTGCAATGTGAATGGGCAGCCTGTGCAGAAAGCTCTGAAAGAAGGCAA  
ACCTTGGGGGCCATCCAGATCATCATTGGCCTGGCTCGCATCGGCTCGGCTCCATCATGGCGACGGTTC  
TCGTAGGGGAATACCTGTCTATTTCACTTACGGAGGCTTCCCTTCTGGGGAGGCTTGTGTTTATCAT  
TTCAGGATCTCTCCGTGGCAGCAGAAAATCAGCCATATTCTTATTGCCTGCTGTCTGGCAGTTTGGGC  
TTGAACATCGTCAGTGAATCTGCTCTGCAGTTGGAGTCATACTTTCATCACAGATCTAAGTATCCCC  
ACCCATATGCCTACCCCGACTATTATCCTTACGCCTGGGGTGTGAACCCTGGAATGGCGATTTCTGGCGT  
GCTGCTGGTCTTCTGCCTCCTGGAGTTTGGCATCGCATGCGCATCTTCCCACTTTGGCTGCCAGTTGGTC  
TGCTGTCAATCAAGCAATGTGAGTGTCTATCCAAACATCTATGCAGCAAACCCAGTGATCACCCAG  
AACCGGTGACCTACCACCAAGTTATCCAGTGAGATCCAAGCAAATAAG

**ACGCGT**ACGCGGCCGCTCGAGCAGAACTCATCTCAGAAGAGGATCTGGCAGCAAATGATATCCTGGATT  
ACAAGGATGACGACGATAAGGTTTAA



[View online »](#)

**Protein Sequence:** >RC205634 protein sequence  
Red=Cloning site Green=Tags(s)

MNSMSTSAVPVANSVLVVAPHNGYPVTPGIMSHVPLYPNSQPQVHLVPGNPPSLVSNVNGQPVQKALKEGK  
 TLGAIQIIIGLARIGLGSIMATLVGEYLSISFYGGFFWGGWLFIIISGSLVAEAENQPYSYCLLSGSLG  
 LNIYSAICSAVGVILFITDLSIPHPYAYPDYYPYAWGVNPGMAISGVLLVFCLEFGIACASSHFQCQLV  
 CCQSSNVSVIYPNIYAANPVITPEPVTSPPSYSSEIQANK

TRTRPLEQKLISEEDLAANDILDYKDDDDKV

**Chromatograms:** [https://cdn.origene.com/chromatograms/mk6172\\_a02.zip](https://cdn.origene.com/chromatograms/mk6172_a02.zip)

**Restriction Sites:** SgfI-MluI

**Cloning Scheme:**

Cloning sites used for ORF Shuttling:



\* The last codon before the Stop codon of the ORF

**ACCN:** NM\_031457

**ORF Size:** 750 bp

**OTI Disclaimer:** The molecular sequence of this clone aligns with the gene accession number as a point of reference only. However, individual transcript sequences of the same gene can differ through naturally occurring variations (e.g. polymorphisms), each with its own valid existence. This clone is substantially in agreement with the reference, but a complete review of all prevailing variants is recommended prior to use. [More info](#)

**OTI Annotation:** This clone was engineered to express the complete ORF with an expression tag. Expression varies depending on the nature of the gene.

**Components:** The ORF clone is ion-exchange column purified and shipped in a 2D barcoded Matrix tube containing 10ug of transfection-ready, dried plasmid DNA (reconstitute with 100 ul of water).

**Reconstitution Method:**

1. Centrifuge at 5,000xg for 5min.
2. Carefully open the tube and add 100ul of sterile water to dissolve the DNA.
3. Close the tube and incubate for 10 minutes at room temperature.
4. Briefly vortex the tube and then do a quick spin (less than 5000xg) to concentrate the liquid at the bottom.
5. Store the suspended plasmid at -20°C. The DNA is stable for at least one year from date of shipping when stored at -20°C.

**RefSeq:** [NM\\_031457.1](#), [NP\\_113645.1](#)

**RefSeq Size:** 1369 bp

**RefSeq ORF:** 753 bp

**Locus ID:** 83661

**UniProt ID:** [Q9BY19](#)

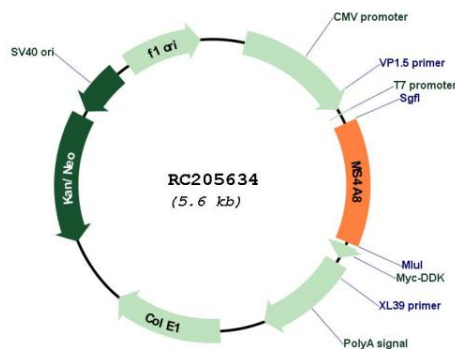
**Cytogenetics:** 11q12.2

**Protein Families:** Druggable Genome, Transmembrane

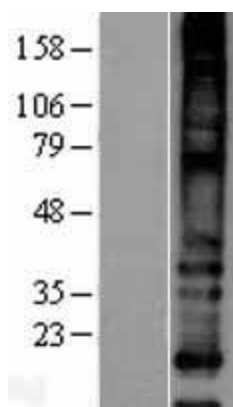
**MW:** 26.3 kDa

**Gene Summary:** This gene encodes a member of the membrane-spanning 4A gene family. Members of this protein family are characterized by common structural features and similar intron/exon splice boundaries and display unique expression patterns among hematopoietic cells and nonlymphoid tissues. The gene encoding this protein is localized to 11q12.3, among a cluster of family members. [provided by RefSeq, Jul 2008]

### Product images:



Circular map for RC205634



Western blot validation of overexpression lysate (Cat# [LY403116]) using anti-DDK antibody (Cat# [TA50011-100]). Left: Cell lysates from untransfected HEK293T cells; Right: Cell lysates from HEK293T cells transfected with RC205634 using transfection reagent MegaTran 2.0 (Cat# [TT210002]).