

Product datasheet for **RC205625**

MARCO (NM_006770) Human Tagged ORF Clone

Product data:

Product Type:	Expression Plasmids
Product Name:	MARCO (NM_006770) Human Tagged ORF Clone
Tag:	Myc-DDK
Symbol:	MARCO
Synonyms:	SCARA2; SR-A6
Mammalian Cell Selection:	Neomycin
Vector:	pCMV6-Entry (PS100001)
E. coli Selection:	Kanamycin (25 ug/mL)



[View online »](#)

ORF Nucleotide Sequence:

>RC205625 ORF sequence
 Red=Cloning site Blue=ORF Green=Tags(s)

TTTTGTAATACGACTCACTATAGGGCGGCCGGGAATTCGTCGACTGGATCCGGTACCGAGGAGATCTGCC
 GCC**CGCATCGCC**

ATGAGAAATAAGAAAATTCTCAAGGAGGACGAGCTCTTGAGTGAGACCCAACAAGCTGCTTTTCACCAA
 TTGCAATGGAGCCTTTCGAAATCAATGTTCCAAAGCCCAAGAGGAGAAATGGGGTGAACCTTCCCTAGC
 TGTGGTGGTCATCTACCTGATCCTGCTCACCGCTGGCGCTGGGCTGCTGGTGGTCCAAGTCTGAATCTG
 CAGGCGCGGCTCCGGGTCTGGAGATGATTTCTCAATGACACTCTGGCGGCTGAGGACAGCCCGTCT
 TCTCCTTGTGCAGTCAGCACACCCTGGAGAACACCTGGCTCAGGGTGCATCGAGGCTGCAAGTCTGCA
 GGCCCAACTCACCTGGGTCCGCTCAGCCATGAGCACTTGTGCAGCGGGTAGACAACTTCACTCAGAAC
 CCAGGGATGTTTCAAGTCAAAGGTGAACAAGGCCCCAGGTCTCAAGGCCACAAGGGGGCCATGGGCA
 TGCCCTGGTGCCCTGGCCCGCCGGGACCACCTGCTGAGAAAGGAGCCAAGGGGGCTATGGGACGAGATGG
 AGCAACAGGCCCTCGGACCCCAAGGCCACCCGGGAGTCAAGGGAGAGCGGGCTCCAAGGACCCAG
 GGTGCTCCAGGAAGCAAGGAGCACTGGCACCCAGGACCCCAAGGAGAGAAGGGCAGCAAGGGCGATG
 GGGTCTCATTGGCCAAAAGGGGAAACTGGAATAAGGGAGAGAAGGAGACCTGGGTCTCCAGGAAG
 CAAAGGGGACAGGGGCATGAAAGGAGATGCAGGGGTGATGGGCTCCTGGAGCCAGGGGAGTAAAGGT
 GACTTCGGGAGGCCAGGCCACCAGGTTTGGTGGTTTTCTGGAGCTAAAGGAGATCAAGGACAACCTG
 GACTGCAGGGTGTTCGGGCCCTCTGGTGCAGTGGGACACCCAGGTGCCAAGGGTGAAGCTGGCAGTGC
 TGGCTCCCCTGGCGAGCAGGACTTCCAGGGAGCCCGGGAGTCCAGGAGCCACAGGCTGAAAGGAAGC
 AAAGGGGACACAGGACTTCAAGGACAGCAAGGAAGAAAAGGAGAATCAGGAGTCCAGGCCCTGCAGGTG
 TGAAGGGAGAACAGGGGAGCCCGGGTGGCAGGTCCCAAGGGAGCCCTGGACAAGCTGGCCAGAAGGG
 AGACCAGGGAGTAAAGGATCTTCTGGGAGCAAGGAGTAAAGGGAGAAAAGGTGAAAGAGGTGAAAAAC
 TAGTGTCCGTCAGGATTGTCGGCAGTAGTAACCGAGGCCGGGCTGAAAGTTTACTACAGTGTACTGGG
 GGACAATTTGCGATGACGAGTGGCAAAATCTGATGCCATTGTCTTCTGCCGCATGCTGGTTACTCCAA
 AGGAAGGGCCCTGTACAAAGTGGGAGCTGGCACTGGGAGATCTGGTGGATAATGTTTCAAGTGTCCGGGC
 ACGGAGAGTACCCTGTGGAGCTGCACCAAGAATAGCTGGGGCCATCATGACTGCAGCCACGAGGAGGACG
 CAGGCGTGGAGTGCAGCGTC

ACGCGTACGCGGCCGCTCGAGCAGAACTCATCTCAGAAGAGGATCTGGCAGCAAATGATATCTGGATT
 ACAAGGATGACGACGATAAGGTTTAA

Protein Sequence:

>RC205625 protein sequence
 Red=Cloning site Green=Tags(s)

MRNKKILKEDELLSETQQAAFHQIAMEPFEINVPKPKRRNGVNFSLAVVVIYLLILLTAGAGLLVVQVLNL
 QARLRVLEMYFLNDTLAEDSPSFLLSAHPGEHLAQGASRLQVLQAQLTWVRVSHEHLLQRVDNFTQN
 PGMFRIKGEQGAPGLQGHKGAMGMPGAPPPGPPAEKGAAGAMGRDGTGSPGPQPPGVKGEAGLQGPQ
 GAPGKQGATGTPGPQGEKGSKGDGGLIGPKGETGKGEKDLGLPGSKGDRGMKGDAGVMGPPGAQGSKG
 DFRGPPPLAGFPGAKGDQGPGLQGVPPGAVGHPGAKGEPGSAGSPGRAGLPGSPGSPGATGLKGS
 KGDTGLQQQGRKGESVVPGPAGVKGEQGSPLAGPKGAPGQAGQKGDQGVKSSGEQGVKGEKGERGEN
 SVSVRIVGSSNRGRAEVYSGTWGTICDDEWQNSDAIVFCRMLGYSKGRALYKVGAGTGQIWL DNVQCRG
 TESTLWSTCKNSWGHDCSHEEDAGVECSV

TRTRPLEQKLISEEDLAANDILDYKDDDDKV

Chromatograms:

https://cdn.origene.com/chromatograms/mk6277_d10.zip

Restriction Sites:

SgfI-MluI

Cloning Scheme:


ACCN: NM_006770

ORF Size: 1560 bp

OTI Disclaimer: The molecular sequence of this clone aligns with the gene accession number as a point of reference only. However, individual transcript sequences of the same gene can differ through naturally occurring variations (e.g. polymorphisms), each with its own valid existence. This clone is substantially in agreement with the reference, but a complete review of all prevailing variants is recommended prior to use. [More info](#)

OTI Annotation: This clone was engineered to express the complete ORF with an expression tag. Expression varies depending on the nature of the gene.

Components: The ORF clone is ion-exchange column purified and shipped in a 2D barcoded Matrix tube containing 10ug of transfection-ready, dried plasmid DNA (reconstitute with 100 ul of water).

- Reconstitution Method:**
1. Centrifuge at 5,000xg for 5min.
 2. Carefully open the tube and add 100ul of sterile water to dissolve the DNA.
 3. Close the tube and incubate for 10 minutes at room temperature.
 4. Briefly vortex the tube and then do a quick spin (less than 5000xg) to concentrate the liquid at the bottom.
 5. Store the suspended plasmid at -20°C. The DNA is stable for at least one year from date of shipping when stored at -20°C.

RefSeq: [NM_006770.2](#)

RefSeq Size: 1853 bp

RefSeq ORF: 1563 bp

Locus ID: 8685

UniProt ID: [Q9UEW3](#)

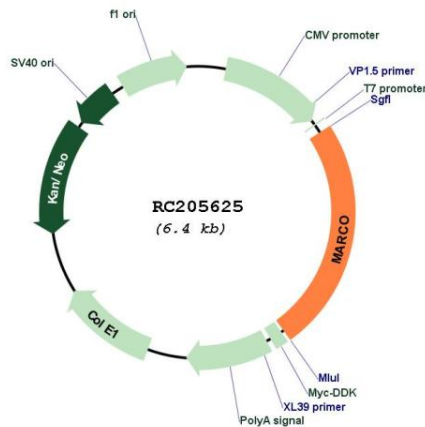
Cytogenetics: 2q14.2

Protein Families: Druggable Genome, Transmembrane

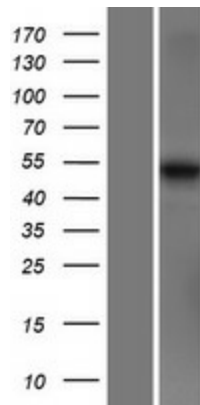
MW: 52.7 kDa

Gene Summary: The protein encoded by this gene is a member of the class A scavenger receptor family and is part of the innate antimicrobial immune system. The protein may bind both Gram-negative and Gram-positive bacteria via an extracellular, C-terminal, scavenger receptor cysteine-rich (SRCR) domain. In addition to short cytoplasmic and transmembrane domains, there is an extracellular spacer domain and a long, extracellular collagenous domain. The protein may form a trimeric molecule by the association of the collagenous domains of three identical polypeptide chains. [provided by RefSeq, Jul 2008]

Product images:



Circular map for RC205625



Western blot validation of overexpression lysate (Cat# [LY416426]) using anti-DDK antibody (Cat# [TA50011-100]). Left: Cell lysates from untransfected HEK293T cells; Right: Cell lysates from HEK293T cells transfected with RC205625 using transfection reagent MegaTran 2.0 (Cat# [TT210002]).