

## Product datasheet for RC205624

### TMEM59 (NM\_004872) Human Tagged ORF Clone

#### Product data:

Product Type:	Expression Plasmids
Product Name:	TMEM59 (NM_004872) Human Tagged ORF Clone
Tag:	Myc-DDK
Symbol:	TMEM59
Synonyms:	C1orf8; DCF1; HSPC001; PRO195; UNQ169
Mammalian Cell Selection:	Neomycin
Vector:	pCMV6-Entry (PS100001)
E. coli Selection:	Kanamycin (25 ug/mL)
ORF Nucleotide Sequence:	>RC205624 ORF sequence Red=Cloning site Blue=ORF Green=Tags(s)

TTTTGTAATACGACTCACTATAGGGCGGCCGGAATTCGTCGACTGGATCCGGTACCGAGGAGATCTGCC  
GCC**CGATCGCC**

ATGGCGCGCCGAAGGGGAGCCTCTGGGTGAGGACCCAACTGGGGCTCCCGCCGTGCTGCTGCTGACCA  
TGGCCTTGGCCGAGGTTCTGGGACCGCTTCGGCTGAAGCATTGACTCGGTCTTGGGTGATACGGCGTC  
TTGCCACCGGCCTGTCAGTTGACCTACCCCTGCACACCTACCCTAAGGAAGAGGAGTTGTACGCATGT  
CAGAGAGGTTGCAGGCTGTTTTCAATTTGTCAGTTTGTGGATGATGGAATTGACTTAAATCGAACTAAAT  
TGAATGTGAATCTGCATGTACAGAAGCATATTCCAATCTGATGAGCAATATGCTTGCCATCTTGTTG  
CCAGAATCAGCTGCCATTCGCTGAACTGAGACAAGAACAATTATGTCCCTGATGCCAAAAATGCACCTA  
CTCTTCTCTAACTCTGGTGAGGTCATTCTGGAGTGACATGATGGACTCCGCACAGAGCTTCATAACCT  
CTTCATGGACTTTTTATCTTCAAGCCGATGACGGAAAAATAGTTATATTCCAGTCTAAGCCAGAAATCCA  
GTACGCACCACATTTGGAGCAGGAGCCTACAAATTTGAGAGAAATCATCTCTAAGCAAAATGTCCTCAGAT  
CTGCAATGAGAAATTCACAAGCGCACAGGAATTTCTTGAAGATGGAGAAAGTGATGGCTTTTTAAGAT  
GCCTCTCTTAACTCTGGGTGGATTTTAACTACAACCTCTGTCTCTCGGTGATGGTATTGCTTTGGAT  
TTGTTGTGCAACTGTTGCTACAGCTGTGGAGCAGTATGTTCCCTCTGAGAAGCTGAGTATCTATGGTGAC  
TTGGAGTTTATGAATGAACAAAAGCTAACAGATATCCAGTCTTCTCTGTGGTTGTTAGATCTAAAA  
CTGAAGATCATGAAGAAGCAGGGCTCTACCTACAAAAGTGAATCTTGCTCATTCTGAAATT

**ACGCGT**ACGCGGCCGCTCGAGCAGAAACTCATCTCAGAAGAGGATCTGGCAGCAATGATATCCTGGATT  
ACAAGGATGACGACGATAAGGTTTAA



[View online »](#)

**Protein Sequence:** >RC205624 protein sequence  
Red=Cloning site Green=Tags(s)

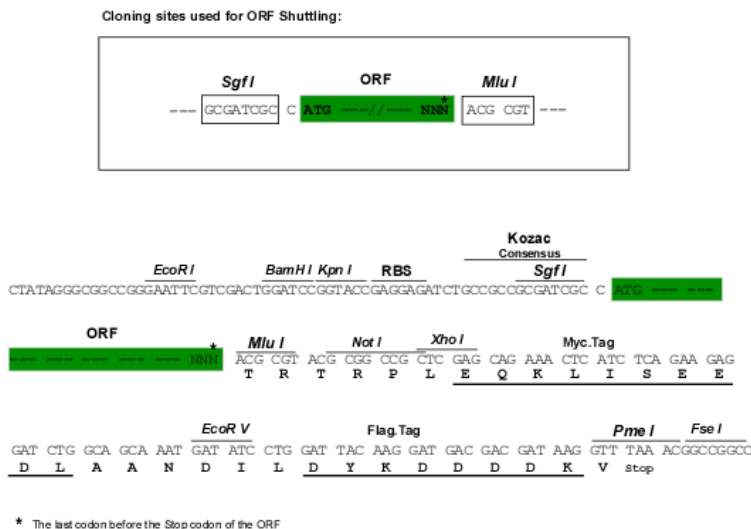
MAAPKGS LWRTQLGLPPLLLL TMLAGGSGTASAEAFDSVLGDTASCHRACQLTYPLHTYPKEEELYAC  
 QRGRLF S I C Q F V D D G I D L N R T K L E C E S A C T E A Y S Q S D E Q Y A C H L G C Q N Q L P F A E L R Q E Q L M S L M P K M H L  
 L F P L T L V R S F W S D M M D S A Q S F I T S S W T F Y L Q A D D G K I V I F Q S K P E I Q Y A P H L E Q E P T N L R E S S L S K M S S D  
 L Q M R N S Q A H R N F L E D G E S D G F L R C L S L N S G W I L T T T L V L S V M V L L W I C C A T V A T A V E Q Y Y P S E K L S I Y G D  
 L E F M N E Q K L N R Y P A S S L V V V R S K T E D H E E A G P L P T K V N L A H S E I

TRTRPLEQKLISEEDLAANDILDYKDDDDKV

**Chromatograms:** [https://cdn.origene.com/chromatograms/mk6574\\_c10.zip](https://cdn.origene.com/chromatograms/mk6574_c10.zip)

**Restriction Sites:** SgfI-MluI

**Cloning Scheme:**



\* The last codon before the Stop codon of the ORF

**ACCN:** NM\_004872

**ORF Size:** 972 bp

**OTI Disclaimer:** The molecular sequence of this clone aligns with the gene accession number as a point of reference only. However, individual transcript sequences of the same gene can differ through naturally occurring variations (e.g. polymorphisms), each with its own valid existence. This clone is substantially in agreement with the reference, but a complete review of all prevailing variants is recommended prior to use. [More info](#)

**OTI Annotation:** This clone was engineered to express the complete ORF with an expression tag. Expression varies depending on the nature of the gene.

**Components:** The ORF clone is ion-exchange column purified and shipped in a 2D barcoded Matrix tube containing 10ug of transfection-ready, dried plasmid DNA (reconstitute with 100 ul of water).

**Reconstitution Method:**

1. Centrifuge at 5,000xg for 5min.
2. Carefully open the tube and add 100ul of sterile water to dissolve the DNA.
3. Close the tube and incubate for 10 minutes at room temperature.
4. Briefly vortex the tube and then do a quick spin (less than 5000xg) to concentrate the liquid at the bottom.
5. Store the suspended plasmid at -20°C. The DNA is stable for at least one year from date of shipping when stored at -20°C.

**RefSeq:** [NM\\_004872.5](#)

**RefSeq Size:** 1709 bp

**RefSeq ORF:** 972 bp

**Locus ID:** 9528

**UniProt ID:** [Q9BXS4](#)

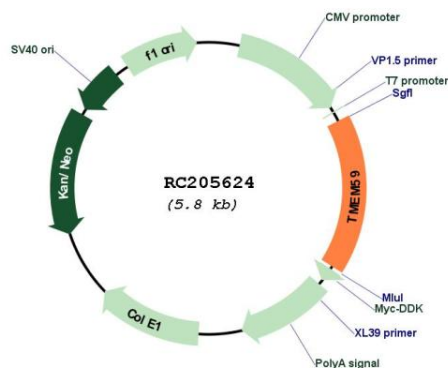
**Cytogenetics:** 1p32.3

**Protein Families:** Transmembrane

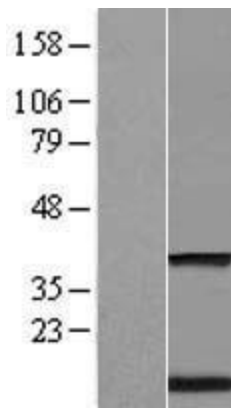
**MW:** 36.3 kDa

**Gene Summary:** This gene encodes a protein shown to regulate autophagy in response to bacterial infection. This protein may also regulate the retention of amyloid precursor protein (APP) in the Golgi apparatus through its control of APP glycosylation. Overexpression of this protein has been found to promote apoptosis in a glioma cell line. Alternative splicing results in multiple transcript variants. [provided by RefSeq, Feb 2015]

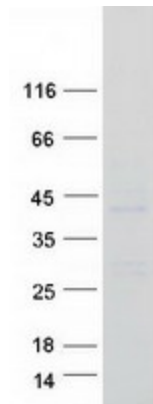
### Product images:



Circular map for RC205624



Western blot validation of overexpression lysate (Cat# [LY417690]) using anti-DDK antibody (Cat# [TA50011-100]). Left: Cell lysates from untransfected HEK293T cells; Right: Cell lysates from HEK293T cells transfected with RC205624 using transfection reagent MegaTran 2.0 (Cat# [TT210002]).



Coomassie blue staining of purified TMEM59 protein (Cat# [TP305624]). The protein was produced from HEK293T cells transfected with TMEM59 cDNA clone (Cat# RC205624) using MegaTran 2.0 (Cat# [TT210002]).