

Product datasheet for **RC205614**

COMMD1 (NM_152516) Human Tagged ORF Clone

Product data:

Product Type: Expression Plasmids

Tag: Myc-DDK

Symbol: COMMD1

Synonyms: C2orf5; MURR1

Mammalian Cell Selection: Neomycin

Vector: pCMV6-Entry (PS100001)

E. coli Selection: Kanamycin (25 ug/mL)

ORF Nucleotide Sequence: >RC205614 ORF sequence
Red=Cloning site Blue=ORF Green=Tags(s)

TTTTGTAATACGACTCACTATAGGGCGGCCGGAATTCGTCGACTGGATCCGGTACCGAGGAGATCTGCC
GCC**CGCATCGCC**

ATGGCGGCGGGCGAGCTTGAGGGTGGCAAACCCCTGAGCGGGCTGCTGAATGCGCTGGCCAGGACACTT
TCCACGGGTACCCCGGCATCACAGAGGAGCTGCTACGGAGCCAGCTATATCCAGAGGTGCCACCCGAGGA
GTTCCGCCCTTTCTGGCAAAGATGAGGGGATTCTTAAGTCTATTGCGTCTGCAGACATGGATTCAAC
CAGCTGGAGGCATTCTTGACTGCTCAAACCAAAAAGCAAGGTGGGATCACATCTGACCAAGCTGCTGTCA
TTTCCAAATTCTGGAAGAGCCACAAGACAAAAATCCGTGAGAGCCTCATGAACCAGAGCCGCTGGAATAG
CGGGCTTCGGGGCTGAGCTGGAGAGTTGATGGCAAGTCTCAGTCAAGGCACTCAGCTCAAATACACACA
CCTGTTGCCATTATAGAGCTGGAATTAGGCAAATATGGACAGGAATCTGAATTTCTGTGTTTGAATTTG
ACGAGGTCAAAGTCAACCAAATTCTGAAGACGCTGTCAGAGGTAGAAGAAAGTATCAGCACACTGATCAG
CCAGCCTAAC

ACGCGTACGCGGCCGCTCGAGCAGAACTCATCTCAGAAGAGGATCTGGCAGCAATGATATCTGGATT
ACAAGGATGACGACGATAAGGTTTAA

Protein Sequence: >RC205614 protein sequence
Red=Cloning site Green=Tags(s)

MAAGELEGGKPLSGLLNALAQDTFHGYPGITEELLRSQLYPEVPPEEFRPFLAKMRGILKSIASADMDFN
QLEAFLTAQTKKQGGITSDQAAVISKFWSHKTKIRESLMNQSRWNSGLRGLSWRVGKSSQSRHSAQIHT
PVAIIIELELGKYGQESEFLCLEFDEVKNQILKTLSEVEESISTLISQPN

TRTRPLEQKLISEEDLAANDILDYKDDDDKV

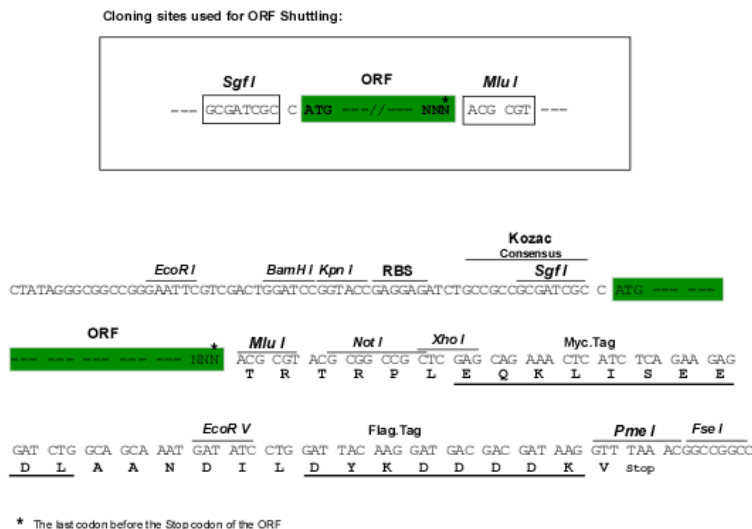
Chromatograms: https://cdn.origene.com/chromatograms/mk6069_a08.zip



[View online »](#)

Restriction Sites: Sgfl-MluI

Cloning Scheme:



ACCN: NM_152516

ORF Size: 570 bp

OTI Disclaimer: The molecular sequence of this clone aligns with the gene accession number as a point of reference only. However, individual transcript sequences of the same gene can differ through naturally occurring variations (e.g. polymorphisms), each with its own valid existence. This clone is substantially in agreement with the reference, but a complete review of all prevailing variants is recommended prior to use. [More info](#)

OTI Annotation: This clone was engineered to express the complete ORF with an expression tag. Expression varies depending on the nature of the gene.

Components: The ORF clone is ion-exchange column purified and shipped in a 2D barcoded Matrix tube containing 10ug of transfection-ready, dried plasmid DNA (reconstitute with 100 ul of water).

Reconstitution Method:

1. Centrifuge at 5,000xg for 5min.
2. Carefully open the tube and add 100ul of sterile water to dissolve the DNA.
3. Close the tube and incubate for 10 minutes at room temperature.
4. Briefly vortex the tube and then do a quick spin (less than 5000xg) to concentrate the liquid at the bottom.
5. Store the suspended plasmid at -20°C. The DNA is stable for at least one year from date of shipping when stored at -20°C.

Note: Plasmids are not sterile. For experiments where strict sterility is required, filtration with 0.22um filter is required.

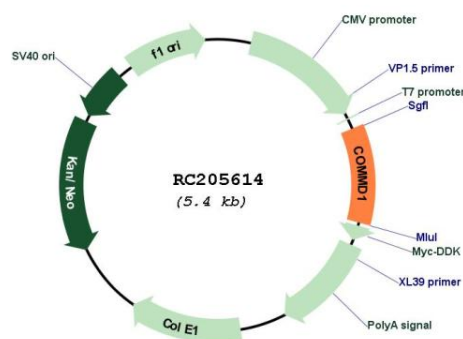
RefSeq: NM_152516.1

RefSeq Size: 725 bp

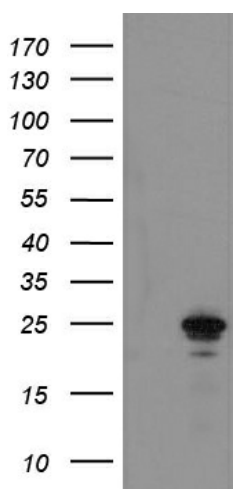
RefSeq ORF: 573 bp

Locus ID:	150684
UniProt ID:	Q8N668
Cytogenetics:	2p15
MW:	21.2 kDa
Gene Summary:	COMMD1 is a regulator of copper homeostasis, sodium uptake, and NF-kappa-B (see MIM 164011) signaling (de Bie et al., 2005 [PubMed 16267171]).[supplied by OMIM, Sep 2009]

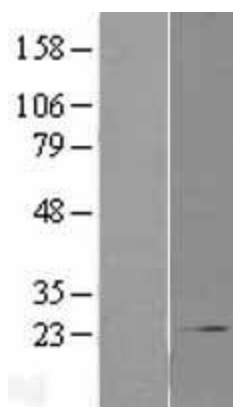
Product images:



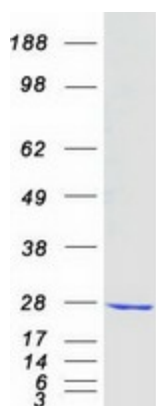
Circular map for RC205614



HEK293T cells were transfected with the pCMV6-ENTRY control (Cat# [PS100001], Left lane) or pCMV6-ENTRY COMMD1 (Cat# RC205614, Right lane) cDNA for 48 hrs and lysed. Equivalent amounts of cell lysates (5 ug per lane) were separated by SDS-PAGE and immunoblotted with anti-COMMD1 (Cat# [TA504899]). Positive lysates [LY403473] (100ug) and [LC403473] (20ug) can be purchased separately from OriGene.



Western blot validation of overexpression lysate (Cat# [LY403473]) using anti-DDK antibody (Cat# [TA50011-100]). Left: Cell lysates from untransfected HEK293T cells; Right: Cell lysates from HEK293T cells transfected with RC205614 using transfection reagent MegaTran 2.0 (Cat# [TT210002]).



Coomassie blue staining of purified COMMD1 protein (Cat# [TP305614]). The protein was produced from HEK293T cells transfected with COMMD1 cDNA clone (Cat# RC205614) using MegaTran 2.0 (Cat# [TT210002]).