

Product datasheet for **RC205611**

DNase gamma (DNASE1L3) (NM_004944) Human Tagged ORF Clone

Product data:

Product Type:	Expression Plasmids
Product Name:	DNase gamma (DNASE1L3) (NM_004944) Human Tagged ORF Clone
Tag:	Myc-DDK
Symbol:	DNase gamma
Synonyms:	DHP2; DNASE1L3; LSD; SLEB16
Mammalian Cell Selection:	Neomycin
Vector:	pCMV6-Entry (PS100001)
E. coli Selection:	Kanamycin (25 ug/mL)
ORF Nucleotide Sequence:	>RC205611 ORF sequence Red=Cloning site Blue=ORF Green=Tags(s)

TTTTGTAATACGACTCACTATAGGGCGGCCGGAATTCGTCGACTGGATCCGGTACCGAGGAGATCTGCC
GCC**CGGATCGCC**

ATGTCACGGGAGCTGGCCCCACTGCTGCTTCTCCTCTCCATCCACAGCGCCCTGGCCATGAGGATCT
GCTCCTTCAACGTCAGGTCCTTTGGGAAAGCAAGCAGGAAGACAAGAATGCCATGGATGTCATTGTGAA
GGTCATCAAACGCTGTGACATCATACTCGTGATGGAAATCAAGGACAGCAACAACAGGATCTGCCCCATA
CTGATGGAGAAGCTGAACAGAAATCAAGGAGAGGCATAACGTACAACATGTGATTAGCTCTCGGCTTG
GAAGAAACACATATAAAGAACAATATGCCTTTCTACAAGGAAAAGCTGGTGTCTGTGAAGAGGAGTTA
TCACTACCATGACTATCAGGATGGAGACGAGATGTGTTTTCCAGGGAGCCCTTTGTGGTCTGGTTCCAA
TCTCCCCACACTGCTGTCAAAGACTTCGTGATTATCCCCCTGCACACCACCCAGAGACATCCGTTAAGG
AGATCGATGAGTTGGTTGAGGTCTACACGGACGTGAAACACCGCTGGAAGGCGGAGAATTCATTTTCAT
GGTGACTTCAATGCCGGCTGCAGCTACGTCCCAAGAAGGCCTGGAAGAACATCCGCTTGAGGACTGAC
CCCAGGTTTGTGGCTGATCGGGACCAAGAGGACACCACGGTGAAGAAGACCAACTGTGCATATG
ACAGGATTGTGCTTAGAGGACAAGAAATCGTCAGTTCTGTTGTTCCCAAGTCAAACAGTGTTTTTGACTT
CCAGAAAGCTTACAAGCTGACTGAAGAGGAGGCCCTGGATGTCAGCGACCACTTTCCAGTTGAATTTAAA
CTACAGTCTTCAAGGGCCTTACCAACAGCAAAAAATCTGTCACCTAAGGAAGAAAACAAGAGCAAAC
GCTCC

ACGCGTACGCGGCCGCTCGAGCAGAAACTCATCTCAGAAGAGGATCTGGCAGCAATGATATCCTGGATT
ACAAGGATGACGACGATAAGGTTTAA



[View online »](#)

Protein Sequence: >RC205611 protein sequence
Red=Cloning site Green=Tags(s)

MSRELAPLLLLLSIHSALAMRICSFNVRSFGESKQEDKNAMDVIVKVIKRCDIILVMEIKDSNNRICPI
 LMEKLNRRNSRRGITYNYVISSRLGRNTYKEQYAFLYKEKLVSVKRSYHYHDYQDGDADVFSREPFVWFQ
 SPHTAVKDFVIIPLHTTPETSVEIDELVEVYTDVVKHRWKAENIFMGDFNAGCSYVPPKAWKNIRLRTD
 PRFVWLIGDQEDTTVKKSTNCAYDRIVLRGQEIYSSVVPKSNVDFDFQKAYKLT EEEALDVSDHFPVEFK
 LQSSRAFTNSKKSVTLRKKTSKRS

TRTRPLEQKLISEEDLAANDILDYKDDDDKV

Chromatograms: https://cdn.origene.com/chromatograms/mk6063_f08.zip

Restriction Sites: SgfI-MluI

Cloning Scheme:

Cloning sites used for ORF Shuttling:



* The last codon before the Stop codon of the ORF

ACCN: NM_004944

ORF Size: 915 bp

OTI Disclaimer: The molecular sequence of this clone aligns with the gene accession number as a point of reference only. However, individual transcript sequences of the same gene can differ through naturally occurring variations (e.g. polymorphisms), each with its own valid existence. This clone is substantially in agreement with the reference, but a complete review of all prevailing variants is recommended prior to use. [More info](#)

OTI Annotation: This clone was engineered to express the complete ORF with an expression tag. Expression varies depending on the nature of the gene.

Components: The ORF clone is ion-exchange column purified and shipped in a 2D barcoded Matrix tube containing 10ug of transfection-ready, dried plasmid DNA (reconstitute with 100 ul of water).

Reconstitution Method:

1. Centrifuge at 5,000xg for 5min.
2. Carefully open the tube and add 100ul of sterile water to dissolve the DNA.
3. Close the tube and incubate for 10 minutes at room temperature.
4. Briefly vortex the tube and then do a quick spin (less than 5000xg) to concentrate the liquid at the bottom.
5. Store the suspended plasmid at -20°C. The DNA is stable for at least one year from date of shipping when stored at -20°C.

RefSeq: [NM_004944.4](#)

RefSeq Size: 1076 bp

RefSeq ORF: 918 bp

Locus ID: 1776

UniProt ID: [Q13609](#)

Cytogenetics: 3p14.3

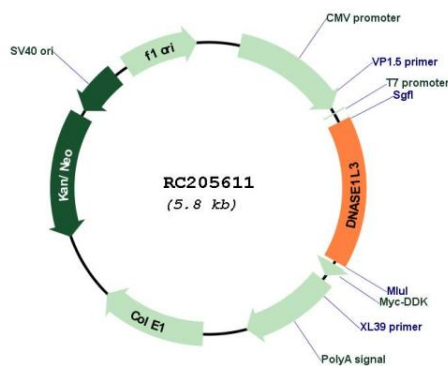
Domains: Exo_endo_phos, DNaseIc

Protein Families: Druggable Genome

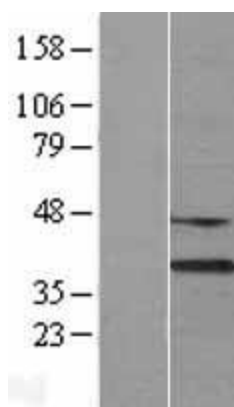
MW: 35.5 kDa

Gene Summary: This gene encodes a member of the deoxyribonuclease I family. The encoded protein hydrolyzes DNA, is not inhibited by actin, and mediates the breakdown of DNA during apoptosis. Mutations in this gene are a cause of systemic lupus erythematosus-16. Alternatively spliced transcript variants encoding multiple isoforms have been observed for this gene. [provided by RefSeq, Feb 2012]

Product images:



Circular map for RC205611



Western blot validation of overexpression lysate (Cat# [LY401537]) using anti-DDK antibody (Cat# [TA50011-100]). Left: Cell lysates from untransfected HEK293T cells; Right: Cell lysates from HEK293T cells transfected with RC205611 using transfection reagent MegaTran 2.0 (Cat# [TT210002]).