

## Product datasheet for **RC205609**

### **ANKRD1 (NM\_014391) Human Tagged ORF Clone**

#### Product data:

**Product Type:** Expression Plasmids  
**Product Name:** ANKRD1 (NM\_014391) Human Tagged ORF Clone  
**Tag:** Myc-DDK  
**Symbol:** ANKRD1  
**Synonyms:** ALRP; bA320F15.2; C-193; CARP; CVARP; MCARP  
**Mammalian Cell Selection:** Neomycin  
**Vector:** pCMV6-Entry (PS100001)  
**E. coli Selection:** Kanamycin (25 ug/mL)  
**ORF Nucleotide Sequence:** >RC205609 representing NM\_014391  
**Red=Cloning site Blue=ORF Green=Tags(s)**

TTTTGTAATACGACTCACTATAGGGCGGCCGGAATTCGTCGACTGGATCCGGTACCGAGGAGATCTGCC  
GCC**CGCATCGCC**

ATGATGGTACTGAAAGTAGAGGAAGTGGTCACTGGAAAGAAGAATGGCAATGGGGAGGCAGGGGAATTCC  
TTCCTGAGGATTCAGAGATGGAGAGTATGAAGCTGCTGTTACTTTAGAGAAGCAGGAGGATCTGAAGAC  
ACTTCTAGCCACCCCTGTGACCTGGGGGAGCAACAGTGGAAAAGCGAGAAACAACGAGAGGCAGAGCTC  
AAAAAGAAAAAACTAGAACAAAGATCAAAGCTTAAAAATTTAGAAGACCTTGAAATAATCATTCAACTGA  
AGAAAAGGAAAAATACAGGAAAATAAGTTCCAGTTGTAAGGAACCGAAGCTGAAATCATTACGGA  
ACCTGTGGATGTGCCTAGTTTTCTGAAGGCTGCTCTGGAGAATAAAGTCCAGTAGTAAAAATTTCTTG  
TCAGACAAGAACAATCCAGATGTTTGTGATGAGTATAACCGGACAGCTCTTCATAGAGCATGCTTGGAAAG  
GACATTTGGCAATTGTGGAGAAGTTAATGGAAGCTGGAGCCAGATCGAATTCCTGTATGCTTGAATC  
CACAGCCATCCACTGGGCAAGCCGTGGAGGAAACCTGGATGTTTTAAAAATTTGTTGCTGAATAAAGGAGCA  
AAAATTAGCGCCCGAGATAAGTTGCTCAGCACAGCGCTGCATGTGGCGGTGAGGACTGGCCACTATGAGT  
GCGCGGAGCATCTATCGCCTGTGAGGCAGACCTCAACGCCAAAGACAGAGAAGGAGATACCCCGTTGCA  
TGATGCGGTGAGACTGAACCGCTATAAGATGATCCGACTCCTGATTATGTATGGCGGGATCTCAACATC  
AAGAACTGTGCTGGGAAGACGCCGATGGATCTGGTGTACTGCGAGAATGGAACCAAGCAATATTCG  
ACAGCCTCAGAGAGAAGTCTACAAGACCTCTCGCATAGCTACATTC

**ACGCGT**ACGCGGCCGCTCGAGCAGAAAACCTCATCTCAGAAGAGGATCTGGCAGCAAATGATATCCTGGATT  
ACAAGGATGACGACGATAAGGTTTAA



[View online »](#)

**Protein Sequence:** >RC205609 representing NM\_014391  
Red=Cloning site Green=Tags(s)

MMVLKVEELVTGKKNGNGEAGEFLPEDFRDGEYEA AVTLEKQEDLKTLLAHPVTLGEQQWKSEKQREAEI  
 KKKKLEQRSKLENLEDEIIIIQLKRRKKYRKT KVPVVKPEPEPEIITEPVDVPTFLKAALENKLPVVEKFL  
 SDKNNPDVDCDEYKRTALHRACLEGLH LAIVEKLM EAGAQIEFRDMLESTAIHWASRGNLDV LKLLLNKGA  
 KISARDKLLSTALHVAVRTGHYECAEHLIACEADLNAKDREGDTP LHDVRLNRYKMIRLLIMYGADLNI  
 KNCAGKTPMDLVLHWQNGTKAIFDSLRENSYKTSRIATF

TRTRPLEQKLISEEDLAANDILDYKDDDDKV

**Chromatograms:** [https://cdn.origene.com/chromatograms/mg2751\\_h09.zip](https://cdn.origene.com/chromatograms/mg2751_h09.zip)

**Restriction Sites:** SgfI-MluI

**Cloning Scheme:**



**ACCN:** NM\_014391

**ORF Size:** 957 bp

**OTI Disclaimer:** The molecular sequence of this clone aligns with the gene accession number as a point of reference only. However, individual transcript sequences of the same gene can differ through naturally occurring variations (e.g. polymorphisms), each with its own valid existence. This clone is substantially in agreement with the reference, but a complete review of all prevailing variants is recommended prior to use. [More info](#)

**OTI Annotation:** This clone was engineered to express the complete ORF with an expression tag. Expression varies depending on the nature of the gene.

**Components:** The ORF clone is ion-exchange column purified and shipped in a 2D barcoded Matrix tube containing 10ug of transfection-ready, dried plasmid DNA (reconstitute with 100 ul of water).

**Reconstitution Method:**

1. Centrifuge at 5,000xg for 5min.
2. Carefully open the tube and add 100ul of sterile water to dissolve the DNA.
3. Close the tube and incubate for 10 minutes at room temperature.
4. Briefly vortex the tube and then do a quick spin (less than 5000xg) to concentrate the liquid at the bottom.
5. Store the suspended plasmid at -20°C. The DNA is stable for at least one year from date of shipping when stored at -20°C.

**Note:** Plasmids are not sterile. For experiments where strict sterility is required, filtration with 0.22um filter is required.

**RefSeq:** [NM\\_014391.3](#)

**RefSeq Size:** 1994 bp

**RefSeq ORF:** 960 bp

**Locus ID:** 27063

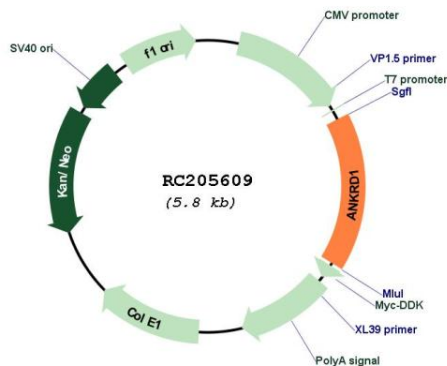
**UniProt ID:** [Q15327](#)

**Cytogenetics:** 10q23.31

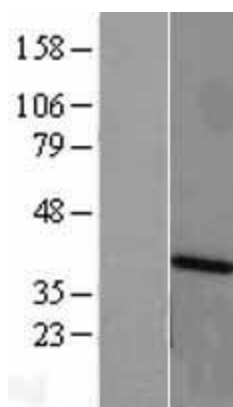
**MW:** 36.1 kDa

**Gene Summary:** The protein encoded by this gene is localized to the nucleus of endothelial cells and is induced by IL-1 and TNF-alpha stimulation. Studies in rat cardiomyocytes suggest that this gene functions as a transcription factor. Interactions between this protein and the sarcomeric proteins myopalladin and titin suggest that it may also be involved in the myofibrillar stretch-sensor system. [provided by RefSeq, Jul 2008]

**Product images:**



Circular map for RC205609



Western blot validation of overexpression lysate (Cat# [LY415314]) using anti-DDK antibody (Cat# [TA50011-100]). Left: Cell lysates from untransfected HEK293T cells; Right: Cell lysates from HEK293T cells transfected with RC205609 using transfection reagent MegaTran 2.0 (Cat# [TT210002]).