

Product datasheet for **RC205600**

ZNF165 (NM_003447) Human Tagged ORF Clone

Product data:

Product Type:	Expression Plasmids
Product Name:	ZNF165 (NM_003447) Human Tagged ORF Clone
Tag:	Myc-DDK
Symbol:	ZNF165
Synonyms:	CT53; LD65; ZSCAN7
Mammalian Cell Selection:	Neomycin
Vector:	pCMV6-Entry (PS100001)
E. coli Selection:	Kanamycin (25 ug/mL)



[View online »](#)

ORF Nucleotide Sequence:

>RC205600 ORF sequence
 Red=Cloning site Blue=ORF Green=Tags(s)

TTTTGTAATACGACTCACTATAGGGCGGCCGGAATTCGTGACTGGATCCGGTACCGAGGAGATCTGCC
 GCC**CGGATCGCC**

ATGGCTACAGAACCAAAGAAAGCTGCAGCCAGAACTCTCCAGAGGATGAAGGACTTCTGATAGTGAAGA
 TAGAAGAGGAAGAATTTATCCATGGGCAGGACACTTGCTTACAGAGAAGTGAACCTTAAGCAGGAGCT
 CTGCAGGCAGCTTTTTAGGCAGTTCTGCTACCAGGATTCTCTGGACCTCGCGAGGCACTGAGCCGCCTC
 CGGGAGCTCTGCTGTCAGTGGCTGAAGCCAGAGATCCATACCAAGGAACAGATTCTGGAAGTCTGGTGC
 TAGAGCAGTTCTGACCATCCTGCCAGGAGATTGTCAGGCCTGGGTACATGAACATTACCCAGAGAGTGG
 AGAGGAGGCAGTGACCATACTAGAAGATTTGGAGAGAGGCACTGATGAAGCAGTACTCCAGGTTCAAGCC
 CATGAACATGGACAAGAAATATCCAGAAAAAGTGTACCTCCTGGACCAGCACTTAATGTCAAGTTAC
 AGCCAGTGGAGACCAAGGCCATTTTGATTTCATCAGAACCCAGCTCCTATGGGACTGTGATAATGAGAG
 TGAACACAGTAGATCCATGCCAAAGCTGGAAATTTTGAAGAAATGAATCACAGAGAATTATATCTGGA
 AGAATCTCAGGATACATATCAGAAGCGTCTGGTGAAGTCTCAAGACATCTGTAAGTCTGCAGGCAGGGTAA
 AGAGACAATGGGAAAAAGAAATCAGGGGAGTCTCAGAGACTCTCGTCTGCCAGGATGAAGTTTTGGTAA
 AATCCTCACCCACAAAAATACAGTCAAGGTGAAATAAAGCCACGATGGATGTGAGAGGAGATTAAT
 CTGAACTCAAATGAATTCACACACCAGAAATCTTGTAAACATGGTACCTGTGACCAGAGCTTCAAATGGA
 ACTCAGATTTTATTAACCATCAAATAATTTATGCTGGAGAAAAAATCACCAATATGGAAAAATCTTTCAA
 GAGCCAAAACCTTGCTAAACATGCAGCAGTTTTTCAGTGGAGATAAAACTCATCAGTGAATGAATGTGGG
 AAAGCTTTCAGGCACAGCTCAAACTTGCTAGGCATCAGAGAATCCACTGGAGAGAGATGCTATGAAT
 GTAATGAATGTGGGAAAAGCTTTGCAGAGAGCTCAGATCTTACTAGACATCGGCGAATTCACACTGGGGA
 AAGACCTTTGGTTGCAAAGAATGTGGGAGAGCATTCAACCTGAACTCACATCTTATCAGGCATCAGAGA
 ATTCACACCAGAGAGAAACCTACGAGTGTAGTGAATGTGGGAAAACCTCCGAGTGAAGTGTGAGCTCACATCTTA
 TTCGACACTTTAGAATTCACACTGGAGAAAAACCTATGAATGCAGTGAAGTGTGGAAGAGCCTTCAGTCA
 GAGCTCAAACCTTAGTCAACACCAGAGAATTCACATGAGGGAAAACCTATTAATG

ACGCGTACGCGGCCGCTCGAGCAGAAACTCATCTCAGAAGAGGATCTGGCAGCAATGATATCCTGGATT
 ACAAGGATGACGACGATAAGGTTTAA

Protein Sequence:

>RC205600 protein sequence
 Red=Cloning site Green=Tags(s)

MATEPKKAAAQNSPEDEGLLIVKIEEEEFIHGQDTCLQRSELLKQELCRQLFRQFCYQDSPGPREALSRL
 RELCCQWLKPEIHTKEQILELLVLEQFLTILPGDLQAWVHEHYPESGEEAVTILEDLERTGDEAVLQVQA
 HEHGQEIFQKKVSPPPALNVKLQPVETKAHFDSSEPQLLWDCDNESENSRSMPLKLEIFEKIESQRISG
 RISGYISEASGESQDICKSAGRVKRQWEKESGSQLSSAQDEFGKILTHKNTVRGEIISHDGCERRLN
 LNSNEFTHQKSKHGTCDQSFKNWSDFINHQIYYAGEKNHQYGKSFKSPKLAKHAAVFSGDKTHQCNECG
 KAFRHSSKLARHQRHTGERCYECNECGKSFSAESSDLTRHRIHTGERPFGCKEKGRAFNLNSHLIRHQR
 IHTREKPYECSECGKTFRVSSHLIRHRIHTGEKPYECSECGRAFSSSNLSQHQRHMRNLLM

TRTRPLEQK**L**I**SEEDLA**NDILDYKDDDDKV

Chromatograms:

https://cdn.origene.com/chromatograms/mk6316_b11.zip

Restriction Sites:

Sgfl-MluI

Cloning Scheme:


ACCN: NM_003447

ORF Size: 1455 bp

OTI Disclaimer: The molecular sequence of this clone aligns with the gene accession number as a point of reference only. However, individual transcript sequences of the same gene can differ through naturally occurring variations (e.g. polymorphisms), each with its own valid existence. This clone is substantially in agreement with the reference, but a complete review of all prevailing variants is recommended prior to use. [More info](#)

OTI Annotation: This clone was engineered to express the complete ORF with an expression tag. Expression varies depending on the nature of the gene.

Components: The ORF clone is ion-exchange column purified and shipped in a 2D barcoded Matrix tube containing 10ug of transfection-ready, dried plasmid DNA (reconstitute with 100 ul of water).

- Reconstitution Method:**
1. Centrifuge at 5,000xg for 5min.
 2. Carefully open the tube and add 100ul of sterile water to dissolve the DNA.
 3. Close the tube and incubate for 10 minutes at room temperature.
 4. Briefly vortex the tube and then do a quick spin (less than 5000xg) to concentrate the liquid at the bottom.
 5. Store the suspended plasmid at -20°C. The DNA is stable for at least one year from date of shipping when stored at -20°C.

Note: Plasmids are not sterile. For experiments where strict sterility is required, filtration with 0.22um filter is required.

RefSeq: [NM_003447.4](#)

RefSeq Size: 2411 bp

RefSeq ORF: 1458 bp

Locus ID: 7718

UniProt ID: [P49910](#)

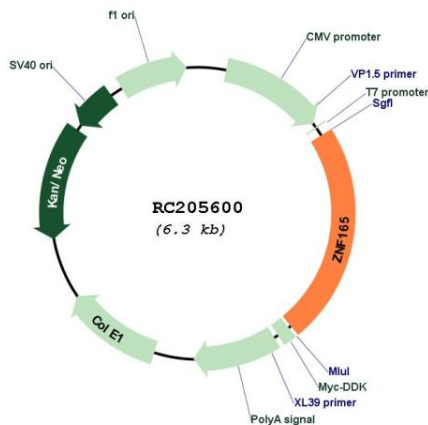
Cytogenetics: 6p22.1

Protein Families: Stem cell - Pluripotency, Transcription Factors

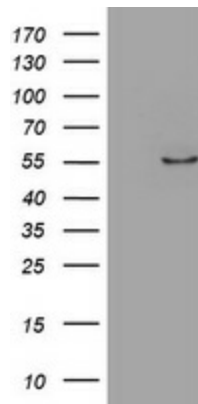
MW: 55.8 kDa

Gene Summary: This gene encodes a member of the Kruppel family of zinc finger proteins. Members of this DNA-binding protein family act as transcriptional regulators. This gene is located within a cluster of zinc finger family members. The encoded protein may play a role in spermatogenesis. [provided by RefSeq, Jul 2008]

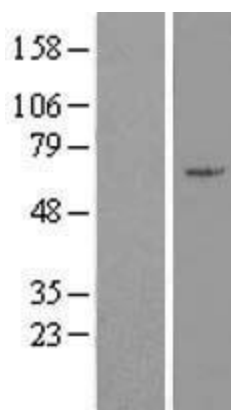
Product images:



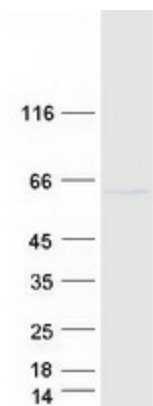
Circular map for RC205600



HEK293T cells were transfected with the pCMV6-ENTRY control (Cat# [PS100001], Left lane) or pCMV6-ENTRY ZNF165 (Cat# RC205600, Right lane) cDNA for 48 hrs and lysed. Equivalent amounts of cell lysates (5 ug per lane) were separated by SDS-PAGE and immunoblotted with anti-ZNF165 (Cat# [TA800423]). Positive lysates [LY418674] (100ug) and [LC418674] (20ug) can be purchased separately from OriGene.



Western blot validation of overexpression lysate (Cat# [LY418674]) using anti-DDK antibody (Cat# [TA50011-100]). Left: Cell lysates from untransfected HEK293T cells; Right: Cell lysates from HEK293T cells transfected with RC205600 using transfection reagent MegaTran 2.0 (Cat# [TT210002]).



Coomassie blue staining of purified ZNF165 protein (Cat# [TP305600]). The protein was produced from HEK293T cells transfected with ZNF165 cDNA clone (Cat# RC205600) using MegaTran 2.0 (Cat# [TT210002]).