

## Product datasheet for **RC205599**

### ANGEL1 (NM\_015305) Human Tagged ORF Clone

#### Product data:

Product Type:	Expression Plasmids
Product Name:	ANGEL1 (NM_015305) Human Tagged ORF Clone
Tag:	Myc-DDK
Symbol:	ANGEL1
Synonyms:	Ccr4e; KIAA0759
Mammalian Cell Selection:	Neomycin
Vector:	pCMV6-Entry (PS100001)
E. coli Selection:	Kanamycin (25 ug/mL)



[View online »](#)

ORF Nucleotide  
Sequence:

>RC205599 ORF sequence  
Red=Cloning site Blue=ORF Green=Tags(s)

TTTTGTAATACGACTCACTATAGGGCGGCCGGGAATTCGTCGACTGGATCCGGTACCGAGGAGATCTGCC  
GCCGCGATCGCC

ATGATCGCGTCGTGCTTGTGTTACCTGCTGCTGCCGGCCACGCGCCTCTCCGCGCCTCTCAGATGCTT  
TCTTCACATGTCGAAAAATGTCCTTCTGGCGAACAGCTCATCCCCCAGGTAGAGGGCGACTTTGCCAT  
GGCCCCCGGGGCCCTGAGCAGGAGGAATGTGAGGGCCTGCTGCAGCAGTGGCGAGAAGAAGGGTTGAGC  
CAGGTGCTCTCAACTGCAAGTGAGGGGCCCTTATAGATAAAGGACTAGCCCAGAGCAGCCTGGCACTTC  
TGATGGATAATCCTGGAGAAGAGAATGTGCTTCAGAGGACAGGTGGTCCAGCAGGCAGCTGAGTGACCT  
TCGGGCTGCAGAGAACCTGGATGAGCCTTCCCTGAGATGCTAGGAGAGGAGCCACTGCTGGAGGTGGAG  
GGGGTGGAGGGTCCATGTGGGCAGCTATCCCCATGCAGTCGGAGCCCCAGTATGCAGACTGTGCTGCC  
TCCAGTGGGTGCCCTGGCCACAGAGCAGTGGGAAGAGGCCAGCGGTGTTGGCCTGGAGCATAGCACC  
TGAGCCTGTGCCAGGAAGAGGCTTCCATCTGGCCCTTTGAGGGCCTGGGCAGTTGCAGCCTCCCGCA  
GTGGAAATACCATATCATGAAATTTGTGGCGAGAATGGGAGGATTTCTCCACCCAGCCAGATGCTCAGG  
GCCTGAAGGCAGGAGATGGCCCTCAGTTCAGTTCAGTCTGATGTCTTATAACATCCTGGCTCAGGACCT  
GATGCAGCAGAGCTCAGAGCTCTATCTACATTGCCATCCAGACATCCTCAATTGGAATATCGCTTCGTG  
AACCTCATGCAGGAATCCAGCACTGGGACCCTGATATCCTGTGTCTCCAGGAAGTCCAGGAAGATCATT  
ACTGGGAGCAGCTGGAACCTCTCTGCGAATGATGGGCTTACCTGTTTCTACAAGAGGAGGACTGGGTG  
TAAACCGATGGCTGTGCTGTCTGCTACAAGCCTACCAGATCCGCTGCTCTGTGCTAGCCCTGTGGAG  
TACTTCCGGCTGGCTTGGAGCTACTTAATCGGGATAATGTGGGCTTAGTGTGCTACTGCAACCACTCG  
TCCCAGAAGGCCCTGGGACAAGTCTCGGTGGCCCCGCTGTGTGGCAAATACCCATATCCTTTACAACCC  
ACGCCGGGGCGATGTCAAGCTGGCCAGATGGCCATTCTCCTGGCGGAAGTGGGCAAGGTGGCCAGACTG  
TCAGATGGCAGCCACTGCCCCATCATCTTGTGCGGGACCTAAATTCTGTCCCTGATTCACCTCTCTACA  
ACTTCATCAGGGATGGAGAGCTCCAGTACCATGGGATGCCAGCCTGGAAGGTATCTGGACAGGAAGACTT  
CTCCCATCAGCTTACCAGAGGAAGCTGCAGGCCCACTGTGGCCAGCTCCCTGGGCATCACTGATTGC  
TGTCAATGTCACCTCCTGTCAACCCAAAGAGATCAGAGAGACGCAAGTATGGCCGAGACTTCTGCTAC  
GTTTCCGCTTCTGCAGCATCGCTGTGTCAGCAGCAGTGGTCTTATGGAAGGAGTGACAGATAC  
TAAGCCAGAGCGACCTGCGGGTGGGCTGAGTCTGTCTTGGGAAGATGCATCGGAGCTTGAGCCTGCC  
TTCTCCAGGACTGTAGGTACCATCCAGCACTGCCTCCACCTGACGTGAGTATATACCCACTTCTGCCCC  
AGCGTGGCCGCCAGAGTCACTACAATGCCATTGGGTCTTGGAAATGACAGTAGATTACATCTTCTCTC  
AGCTGAGTCTGTGAGAATGGGAACAGAACTGATCACAGGCTGTATCGAGATGGAATCTCAAGCTCCTG  
GGTCGTCTCTCCCTTCTCTGAAAGATACTCTGGGCTGCCAATGGCTTACCCAACCCCTTCTGTCTT  
CAGACCACCTCTGCCTGCTAGCCAGCTTCGGGATGGAAGTACCAGCCCCA

ACGCGTACGCGGGCCGCTCGAGCAGAACTCATCTCAGAAGAGGATCTGGCAGCAAATGATATCCTGGATT  
ACAAGGATGACGACGATAAGGTTTAA

**Protein Sequence:** >RC205599 protein sequence  
Red=Cloning site Green=Tags(s)

MIASCLCYLLLPATRLFRALSDAFFTCRKNVLLANSSSPQVEGDFAMAPRGPEQECEGLLQQWREEGLS  
 QVLSTASEGPLIDKGLAQSSLALLMDNPGEENAASEDRWSSRQLSDLRAAENLDEPFPEMLGEEPLLEVE  
 GVEGSMWAAIPMQSEPPYADCAALPVGALATEQWEEDPAVLAWSIAPPEVPQEEASIWPFEGLGQLPPA  
 VEIPYHEILWREWEDFSTQPDAGLQKAGDGPQFQFTLMSYNILAQDLMQQSSELYLHCHPDILNWNRYFV  
 NLMQEFQHWDPDILCLQEVEDHYWEQLEPSLRMMGFTCFYKRRTGCKTDGCAVCYKPTRFRLLCASPVE  
 YFRPGLLELLNRDNVGLVLLLQPLVPEGLGQVSVAPLVCVANTHILYNPRRGDVKLAQMAILLAEVGVARL  
 SDGSHCP IILCGDLNSVPDSPLYNFIRDGELQYHGMPAWKVSGQEDFSHLQYQRKLQAPLWSSLGITDC  
 CQYVTSCHPKRSERRKYGRDFLLRFRFCSIAQRPVGLVMEGVTDTKPERPAGWAESVLEEDASELEPA  
 FSRTVGTIQHCLHLTSVYTHFLPQRGRPEVTTMPLGLGMTVDYIFFSAESCENRNTDHLRYRDGTLKLL  
 GRLSLLSEEILWAANGLPNPFCSSDHLCLLASFGMEVTAP

TRTRPLEQKLISEEDLAANDILDYKDDDDKV

**Chromatograms:** [https://cdn.origene.com/chromatograms/mk6290\\_a05.zip](https://cdn.origene.com/chromatograms/mk6290_a05.zip)

**Restriction Sites:** SgfI-MluI

**Cloning Scheme:**



**ACCN:** NM\_015305

**ORF Size:** 2010 bp

**OTI Disclaimer:** The molecular sequence of this clone aligns with the gene accession number as a point of reference only. However, individual transcript sequences of the same gene can differ through naturally occurring variations (e.g. polymorphisms), each with its own valid existence. This clone is substantially in agreement with the reference, but a complete review of all prevailing variants is recommended prior to use. [More info](#)

**OTI Annotation:** This clone was engineered to express the complete ORF with an expression tag. Expression varies depending on the nature of the gene.

**Components:** The ORF clone is ion-exchange column purified and shipped in a 2D barcoded Matrix tube containing 10ug of transfection-ready, dried plasmid DNA (reconstitute with 100 ul of water).

**Reconstitution Method:**

1. Centrifuge at 5,000xg for 5min.
2. Carefully open the tube and add 100ul of sterile water to dissolve the DNA.
3. Close the tube and incubate for 10 minutes at room temperature.
4. Briefly vortex the tube and then do a quick spin (less than 5000xg) to concentrate the liquid at the bottom.
5. Store the suspended plasmid at -20°C. The DNA is stable for at least one year from date of shipping when stored at -20°C.

**RefSeq:** [NM\\_015305.2](#), [NP\\_056120.1](#)

**RefSeq Size:** 4131 bp

**RefSeq ORF:** 2013 bp

**Locus ID:** 23357

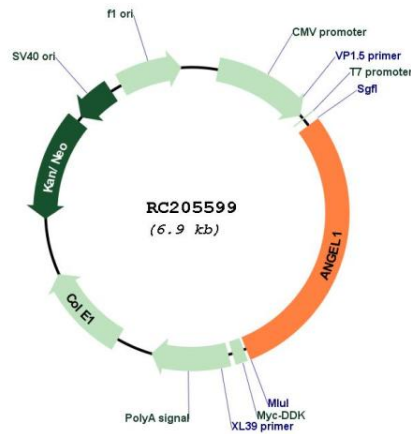
**UniProt ID:** [Q9UNK9](#)

**Cytogenetics:** 14q24.3

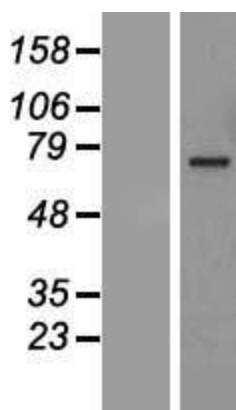
**Domains:** Exo\_endo\_phos

**MW:** 75.2 kDa

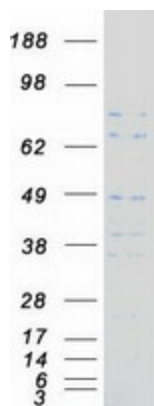
**Product images:**



Circular map for RC205599



Western blot validation of overexpression lysate (Cat# [LY414639]) using anti-DDK antibody (Cat# [TA50011-100]). Left: Cell lysates from untransfected HEK293T cells; Right: Cell lysates from HEK293T cells transfected with RC205599 using transfection reagent MegaTran 2.0 (Cat# [TT210002]).



Coomassie blue staining of purified ANGEL1 protein (Cat# [TP305599]). The protein was produced from HEK293T cells transfected with ANGEL1 cDNA clone (Cat# RC205599) using MegaTran 2.0 (Cat# [TT210002]).