

## Product datasheet for **RC205597**

### **PDIK1L (NM\_152835) Human Tagged ORF Clone**

#### Product data:

Product Type:	Expression Plasmids
Product Name:	PDIK1L (NM_152835) Human Tagged ORF Clone
Tag:	Myc-DDK
Symbol:	PDIK1L
Synonyms:	CLIK1L; STK35L2
Mammalian Cell Selection:	Neomycin
Vector:	pCMV6-Entry (PS100001)
E. coli Selection:	Kanamycin (25 ug/mL)
ORF Nucleotide Sequence:	>RC205597 ORF sequence Red=Cloning site Blue=ORF Green=Tags(s)

TTTTGTAATACGACTCACTATAGGGCGCCGGGAATTCGTCGACTGGATCCGGTACCGAGGAGATCTGCC  
GCC**CGATCGCC**

ATGGTGAGTAGCCAGCCAAAGTACGATCTAATACGGGAGGTAGGCCGAGGTAGTTACGGTGTGTATG  
AAGCAGTCATCAGAAAGACCTCTGCACGGGTGGCAGTGAAGAAAATTCGATGTCACGCACCTGAAAAATGT  
TGAAGTAGCCCTTCGTGAGTTCTGGGCACTAAGCAGTATCAAGAGCCAACATCCAATGTGATTCACCTG  
GAGGAATGCATCCTACAAAAGGATGGGATGGTGCAAAAGATGTCCACGGCTCTAATCTCCCTTTATT  
TACAGCTTGTAGAACTTCATTAAGGAGAAATTGCCTTTGATCCAGAAGCGCCTATTATTTGTGGTT  
TGTGATGGATTTTGTGACGGAGGAGATATGAATGAGTATCTGTTGTCCAGGAAACCAATCGTAAACT  
AACACCAGCTTTCATGCTTCAGCTGAGCAGTGCCCTGGCTTTCTTCATATAAAACCAGATCATCCACCGAG  
ATCTTAAGCCTGATAACATCCTGATTTCTCAAACCAGGTTGGATACCAGTGACTTGGAACCTACCCTCAA  
GGTGGCTGATTTTGGTCTAAGTAAAGTTTGTTCAGCCTCTGGGCAGAACCAGAAAGAACCTGTCAGTGTA  
ACAAGTGTTCCTTCCACAGCATGTGGAACAGATTTTACATGGCTCCTGAAGTTTGGGAAGGACATT  
ACACAGCAAAGCTGACATCTTTGCTCTGGGGATTATCATCTGGCAATGCTGGAAGGATCACATTCAT  
AGACACAGAGACAAAGAAGGAACCTTTGGGAGTTATGTAACAAGGAAGTGGATTTGCTGCTGGG  
GAGGCACTTCTGAAAAATCCAAAATGGAACCTTCATTCTGTGAAGAAAAATCTATGAATGGGCGAA  
TGAACAACCTGATTAAGGAAATGCTGGCTGCAAACCCTCAGGATCGTCCAGATGCTTTTGAAGTGAAGT  
CAGATTAGTACAAATTGCATTTAAAGATAGCAGCTGGGAAACG

**ACGCGT**ACGCGGCCGCTCGAGCAGAAACTCATCTCAGAAGAGGATCTGGCAGCAAATGATATCCTGGATT  
ACAAGGATGACGACGATAAGGTTTAA



[View online »](#)

**Protein Sequence:** >RC205597 protein sequence  
Red=Cloning site Green=Tags(s)

MVSSQPKYDLIREVGRGSYGVVYEAVIRKTSARVAVKKIRCHAPENVELALREFWALSSIKSQHPNVIHL  
 EECILQKDGVMVQKMSHGSNSL YLQLVETSLKGEIAFDPRSAYLWFVMDFCDDGDMNEYLLSRKPNRKT  
 NTSFMLQLSSALAFHLKNQI IHRDLKPDNILISQTRLDTSDLEPTLKVADFGLSKVCSASGQNPPEPVSV  
 NKCFLSTACGDFYMAPEVWEGHYTAKADIFALGIIIWAMLERITFIDTETKKELLSYVKQGTEIVPVG  
 EALLENPKMELLIPVKKKSMNGRMKQLIKEMLAANPQDRPDAFELELRVQIAFKDSSWET

TRTRPLEQKLISEEDLAANDILDYKDDDDKV

**Chromatograms:** [https://cdn.origene.com/chromatograms/mk6072\\_h02.zip](https://cdn.origene.com/chromatograms/mk6072_h02.zip)

**Restriction Sites:** SgfI-MluI

**Cloning Scheme:**



**ACCN:** NM\_152835

**ORF Size:** 1023 bp

**OTI Disclaimer:** The molecular sequence of this clone aligns with the gene accession number as a point of reference only. However, individual transcript sequences of the same gene can differ through naturally occurring variations (e.g. polymorphisms), each with its own valid existence. This clone is substantially in agreement with the reference, but a complete review of all prevailing variants is recommended prior to use. [More info](#)

**OTI Annotation:** This clone was engineered to express the complete ORF with an expression tag. Expression varies depending on the nature of the gene.

**Components:** The ORF clone is ion-exchange column purified and shipped in a 2D barcoded Matrix tube containing 10ug of transfection-ready, dried plasmid DNA (reconstitute with 100 ul of water).

**Reconstitution Method:**

1. Centrifuge at 5,000xg for 5min.
2. Carefully open the tube and add 100ul of sterile water to dissolve the DNA.
3. Close the tube and incubate for 10 minutes at room temperature.
4. Briefly vortex the tube and then do a quick spin (less than 5000xg) to concentrate the liquid at the bottom.
5. Store the suspended plasmid at -20°C. The DNA is stable for at least one year from date of shipping when stored at -20°C.

**RefSeq:** [NM\\_152835.2](#)

**RefSeq Size:** 4153 bp

**RefSeq ORF:** 1026 bp

**Locus ID:** 149420

**UniProt ID:** [Q8N165](#)

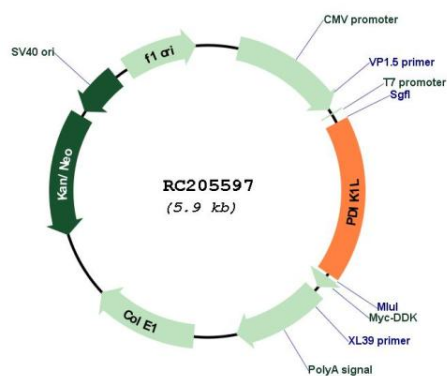
**Cytogenetics:** 1p36.11

**Domains:** pkinase, TyrKc, S\_TKc

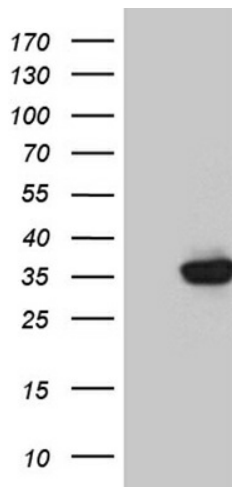
**Protein Families:** Druggable Genome, Protein Kinase

**MW:** 38.5 kDa

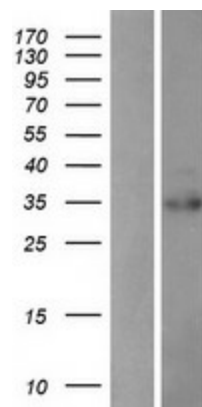
### Product images:



Circular map for RC205597



HEK293T cells were transfected with the pCMV6-ENTRY control (Cat# [PS100001], Left lane) or pCMV6-ENTRY PDIK1L (Cat# RC205597, Right lane) cDNA for 48 hrs and lysed. Equivalent amounts of cell lysates (5 ug per lane) were separated by SDS-PAGE and immunoblotted with anti-PDIK1L (Cat# [TA811104])(1:2000). Positive lysates [LY407293] (100ug) and [LC407293] (20ug) can be purchased separately from OriGene.



Western blot validation of overexpression lysate (Cat# [LY407293]) using anti-DDK antibody (Cat# [TA50011-100]). Left: Cell lysates from untransfected HEK293T cells; Right: Cell lysates from HEK293T cells transfected with RC205597 using transfection reagent MegaTran 2.0 (Cat# [TT210002]).