

Product datasheet for RC205589

RNF133 (NM_139175) Human Tagged ORF Clone

Product data:

Product Type:	Expression Plasmids
Product Name:	RNF133 (NM_139175) Human Tagged ORF Clone
Tag:	Myc-DDK
Symbol:	RNF133
Mammalian Cell Selection:	Neomycin
Vector:	pCMV6-Entry (PS100001)
E. coli Selection:	Kanamycin (25 ug/mL)
ORF Nucleotide Sequence:	>RC205589 representing NM_139175 Red=Cloning site Blue=ORF Green=Tags(s)

TTTTGTAATACGACTCACTATAGGGCGGCCGGAATTCGTCGACTGGATCCGGTACCGAGGAGATCTGCC
GCC**CGATCGCC**

ATGCATCTACTCAAGGTTGGCACTTGGAGAAACAACACTGCCTCTTCTGGCTTATGAAGTTCAGTGTTCT
TTTGGCTTGTAGTCAGAACTGTTGCAGAGCAAGTGTGTTTGGATGGCTTATATGAACATATCATTTC
TGTTGGGAATCATGTGTTGTCAGAGTTGGGAGAGACTGGAGTCTTTGGAAGAAGCTCCACTTTGAAGAGA
GTGGCAGGAGTTATAGTGCCACCAGAGGGAAAAATCCAAAATGCATGTAATCCCAATACCATTTTCAGCC
GATCAAAGTACTCAGAGACCTGGCTTGCCTTATTGAACGGGGAGGTTGTACCTCACACAGAAAATTA
AGTGGCAACTGAGAAGGGAGCCAGTGGAGTGATCATCTATAACGTTCCAGGTACTGGCAACCAGGTGTT
CCCATGTTTCATCAGGCATTTGAAGATGTCGTTGTGTTATGATTGGTAACTTAAAAGGCACGGAAATTT
TCCATTTAATTAAGAAGGGAGTTCTCATTACAGCCGTGGTTGAGGTGGGAGAAAGCACATCATCTGGAT
GAATCACTATTTGGTCTCTTTTGTGATTGTCACAACTGCTACCTTAGCATATTTTCATCTTTTATCACATT
CATAGACTTTGTTAGCAAGGATTCAGAACCGGAGATGGCAGCGATTAACAACAGATCTTCAGAACACAT
TTGGACAACCTCAACTTCGAGTAGTAAAAGAGGGGGATGAAGAAATAAATCCAAATGGGGATAGCTCGCT
AATTTGCTTTGAACGCTATAAGCCTAATGACATAGTTCGTATTCTGACTGTAAACATTTTCCACAAG
AATTGCATTGACCCCTGGATTTTACCCCATGGGACATGCCCATTTGCAAATGTGATATTCTTAAAGTTT
TGGGGATTCAAGTGGTTGTTGAAAATGGAACAGAACCTTTGCAAGTTCTAATGTCAAATGAACTGCCTGA
AACCTTATCACCTAGTGAAGAGGAGACAAATAATGAAGTTTCTCCTGCAGGAACCTCAGATAAAGTAATC
CATGTGGAGGAGAACCCTACTTCTCAGAATAATGACATCCAGCCTCATTGAGTAGTGAAGATGTTTCATC
CTTCACCT

ACGCGTACGCGGCCGCTCGAGCAGAACTCATCTCAGAAGAGGATCTGGCAGCAAATGATATCCTGGATT
ACAAGGATGACGACGATAAGGTTTAA



[View online »](#)

Protein Sequence: >RC205589 representing NM_139175
Red=Cloning site Green=Tags(s)

MHLLKVGTVRRNNTASSWLMKFSVLWLVSQNCRCRASVVWMAVMNISFHVGNHVLSELGETGVFGRSSTLKR
VAGVIVPPEGKIQNACNPNTIFSRSKYSETWLALIERGGCTFTQKIKVATEKGASGVIIYNVPGTGNQVF
PMFHQAFEDVVVMIGNLKGTEIFHLIKKGVLTAVVEVGRKHIWMNHVLSFVIVTTATLAYFIFYHI
HRLCLARIQNRWQRLTDLQNTFGQLQLRVVKEGDEEINPNGDSCVICFERYKPNDIVRILTCKHFFHK
NCIDPWILPHGTCPICKDILKVLGIQVVVENGTEPLQVLSNELPETLSPSEETNNEVSPAGTSDKVI
HVEENPTSQNNDIQPHSVVEDVHPSP

TRTRPLEQKLISEEDLAANDILDYKDDDDKV

Chromatograms: https://cdn.origene.com/chromatograms/mg2889_e06.zip

Restriction Sites: Sgfl-MluI

Cloning Scheme:

Cloning sites used for ORF Shuttling:



* The last codon before the Stop codon of the ORF

ACCN: NM_139175

ORF Size: 1128 bp

OTI Disclaimer: The molecular sequence of this clone aligns with the gene accession number as a point of reference only. However, individual transcript sequences of the same gene can differ through naturally occurring variations (e.g. polymorphisms), each with its own valid existence. This clone is substantially in agreement with the reference, but a complete review of all prevailing variants is recommended prior to use. [More info](#)

OTI Annotation: This clone was engineered to express the complete ORF with an expression tag. Expression varies depending on the nature of the gene.

Components: The ORF clone is ion-exchange column purified and shipped in a 2D barcoded Matrix tube containing 10ug of transfection-ready, dried plasmid DNA (reconstitute with 100 ul of water).

Reconstitution Method:

1. Centrifuge at 5,000xg for 5min.
2. Carefully open the tube and add 100ul of sterile water to dissolve the DNA.
3. Close the tube and incubate for 10 minutes at room temperature.
4. Briefly vortex the tube and then do a quick spin (less than 5000xg) to concentrate the liquid at the bottom.
5. Store the suspended plasmid at -20°C. The DNA is stable for at least one year from date of shipping when stored at -20°C.

RefSeq: [NM_139175.2](#)

RefSeq Size: 1446 bp

RefSeq ORF: 1131 bp

Locus ID: 168433

UniProt ID: [Q8WVZ7](#)

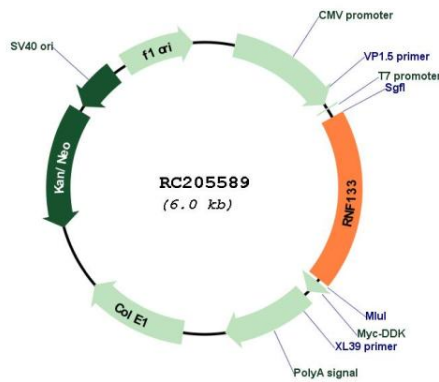
Cytogenetics: 7q31.32

Protein Families: Druggable Genome, Protease, Transmembrane

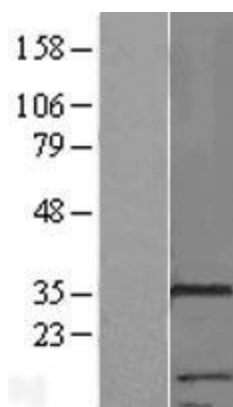
MW: 42.1 kDa

Gene Summary: The protein encoded by this gene contains a RING finger domain, a motif present in a variety of functionally distinct proteins and known to be involved in protein-protein and protein-DNA interactions. This gene has no intron. [provided by RefSeq, Jul 2008]

Product images:



Circular map for RC205589



Western blot validation of overexpression lysate (Cat# [LY408378]) using anti-DDK antibody (Cat# [TA50011-100]). Left: Cell lysates from untransfected HEK293T cells; Right: Cell lysates from HEK293T cells transfected with RC205589 using transfection reagent MegaTran 2.0 (Cat# [TT210002]).