

Product datasheet for RC205588

Carbohydrate sulfotransferase 1 (CHST1) (NM_003654) Human Tagged ORF Clone

Product data:

| | |
|---------------------------|--|
| Product Type: | Expression Plasmids |
| Product Name: | Carbohydrate sulfotransferase 1 (CHST1) (NM_003654) Human Tagged ORF Clone |
| Tag: | Myc-DDK |
| Symbol: | Carbohydrate sulfotransferase 1 |
| Synonyms: | C6ST; GST-1; KS6ST; KSGal6ST; KSST |
| Mammalian Cell Selection: | Neomycin |
| Vector: | pCMV6-Entry (PS100001) |
| E. coli Selection: | Kanamycin (25 ug/mL) |
| ORF Nucleotide Sequence: | >RC205588 ORF sequence Red=Cloning site Blue=ORF Green=Tags(s) |

TTTTGTAATACGACTCACTATAGGGCGCCGGGAATTCGTCGACTGGATCCGGTACCGAGGAGATCTGCC
GCC**CGATCGCC**

ATGCAATGTTCTGGAAGGCCGTCCTCCTTGCCTGGCTCCATTGCCATCCAGTACACGGCCATCC
GCACCTTCACCGCAAGTCTTTACACCTGCCCGGGCTGGCAGAGGCCGGGCTGGCCGAGCGACTGTG
CGAGGAGAGCCCCACCTTCGCCTACAACCTCTCCCGAAGACCCACATCCTCATCTGGCCACCACGCGC
AGCGGCTCCTCCTCGTGGCCAGCTCTCAACCAGCACCTGGACGTCTTCTACCTGTTGAGCCCTCT
ACCACGTCGAGAACACGCTCATCCCCGCTTACCCAGGCAAGAGCCCCGGCCAGCCGGGTCATGCT
AGGCGCCAGCCGACCTCCTGCGGAGCCTCTACGACTGCGACCTCTACTTCTGGAGAACTACATCAAG
CCGCCCGCGTCAACCACACCACCGACAGGATCTTCCGCCCGGGGCCAGCCGGGTCCTCTGCTCCCGGC
CTGTGTGCGACCTCCGGGGCCAGCCGACCTGGTCTGGAGGAGGGGACTGTGTGCGCAAGTGGCGGT
ACTCAACTGACCGTGGCGGCCGAGGCGTCCCGCAGCGCAGCCACGTGGCCATCAAGACGGTGGCGGTG
CCCAGGTGAACGACCTGCGGCCCTGGTGAAGACCCGCGATTAACCTCAAGGTACCCAGCTGGTCC
GAGACCCCGCGGCAATCTGGCTTCGCGCAGCGAGACCTCCGCGACACGTACCGGCTCTGGCGGCTCTG
GTACGGCACCGGGAGGAAACCTACAACCTGGACGTGACGACGTGACCACGGTGTGCGAGGACTTCTCC
AACTCCGTGCCACCGGCTCATGCGGCCCGTGGCTCAAGGGCAAGTACATGTTGGTGGCTACGAGG
ACCTGGCTCGGAACCTATGAAGAAGACCGAGGAGATCTACGGGTTCTGGGCATCCCGCTGGACAGCCA
CGTGGCCCGTGGATCCAGAACAACACGCGGGGCGACCCACCCTGGGCAAGCACAAATACGGCACCGTG
CGAAACTCGGCGGCCACGGCCGAGAAGTGGCGCTTCCGCCTCTCTACGACATCGTGGCCTTTGCCAGA
ACGCTGCCAGCAGGTGCTGGCCAGCTGGGCTACAAGATCGCCGCTCGGAGGAGGAGCTGAAGAACC
CTCGGTACGCTGGTGGAGGAGCGGACTTCCGCCCTTCTCG

ACGCGTACGCGGCCGCTCGAGCAGAACTCATCTCAGAAGAGGATCTGGCAGCAAATGATATCTGGATT
ACAAGGATGACGACGATAAGGTTTAA



[View online »](#)

Protein Sequence: >RC205588 protein sequence
Red=Cloning site Green=Tags(s)

MQCSWKAVLLLALASIAIQYTAIRTFTAKSFHTCPGLAEAGLAERLCEESPTFAYNLSRKTHILILATTR
 SGSSFVQQLFNQHLDFVYLFEPYHVQNTLIPRFTQKSPADRRVMLGASRDLLRSLYDCDLYFLENYIK
 PPPVNHTTDRIFRRGASRVLC SRPVCDPPGPADLVLEEGDCVRKCGLLNLTVAAEACRERSHVAIKTVRV
 PEVNDLRALVEDPRLNLKVIQLVRDPRGILASRSETFRDITYRLWRLWYGTGRKPYNLDVTQLTTVCEDFS
 NSVSTGLMRPPWLKGYMLVRYEDLARNP MKKTEEIYGF LGIPLDSHVARWIQNTRGDPDTLGKHKYGTV
 RNSAATAEKWRFRLSYDIVAFAQNACQQVLAQLGYKIAASEEELKNPSVSLVEERDFRPFSS

TRTRPLEQKLISEEDLAANDILDYKDDDDKV

Chromatograms: https://cdn.origene.com/chromatograms/mk6537_b08.zip

Restriction Sites: SgfI-MluI

Cloning Scheme:



ACCN: NM_003654

ORF Size: 1233 bp

OTI Disclaimer: The molecular sequence of this clone aligns with the gene accession number as a point of reference only. However, individual transcript sequences of the same gene can differ through naturally occurring variations (e.g. polymorphisms), each with its own valid existence. This clone is substantially in agreement with the reference, but a complete review of all prevailing variants is recommended prior to use. [More info](#)

OTI Annotation: This clone was engineered to express the complete ORF with an expression tag. Expression varies depending on the nature of the gene.

Components: The ORF clone is ion-exchange column purified and shipped in a 2D barcoded Matrix tube containing 10ug of transfection-ready, dried plasmid DNA (reconstitute with 100 ul of water).

Reconstitution Method:

1. Centrifuge at 5,000xg for 5min.
2. Carefully open the tube and add 100ul of sterile water to dissolve the DNA.
3. Close the tube and incubate for 10 minutes at room temperature.
4. Briefly vortex the tube and then do a quick spin (less than 5000xg) to concentrate the liquid at the bottom.
5. Store the suspended plasmid at -20°C. The DNA is stable for at least one year from date of shipping when stored at -20°C.

RefSeq: [NM_003654.3](#)

RefSeq Size: 3947 bp

RefSeq ORF: 1236 bp

Locus ID: 8534

UniProt ID: [O43916](#)

Cytogenetics: 11p11.2

Domains: Sulfotransfer

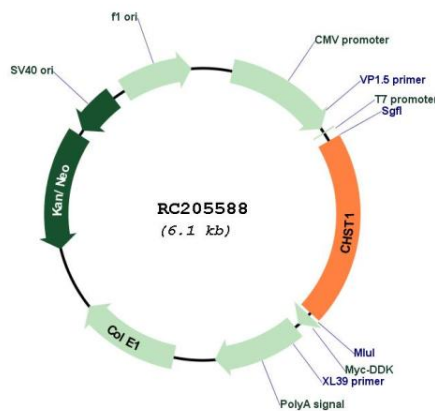
Protein Families: Transmembrane

Protein Pathways: Keratan sulfate biosynthesis, Metabolic pathways

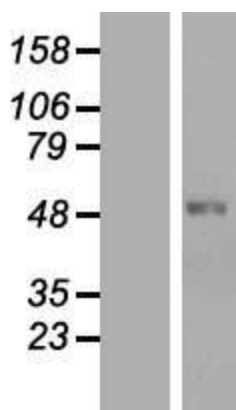
MW: 46.7 kDa

Gene Summary: This locus encodes a member of the keratin sulfotransferase family of proteins. The encoded enzyme catalyzes the sulfation of the proteoglycan keratin. [provided by RefSeq, Aug 2011]

Product images:



Circular map for RC205588



Western blot validation of overexpression lysate (Cat# [LY418521]) using anti-DDK antibody (Cat# [TA50011-100]). Left: Cell lysates from untransfected HEK293T cells; Right: Cell lysates from HEK293T cells transfected with RC205588 using transfection reagent MegaTran 2.0 (Cat# [TT210002]).