

Product datasheet for RC205587

ABHD13 (NM_032859) Human Tagged ORF Clone

Product data:

Product Type:	Expression Plasmids
Product Name:	ABHD13 (NM_032859) Human Tagged ORF Clone
Tag:	Myc-DDK
Symbol:	ABHD13
Synonyms:	bA153I24.2; BEM46L1; C13orf6
Mammalian Cell Selection:	Neomycin
Vector:	pCMV6-Entry (PS100001)
E. coli Selection:	Kanamycin (25 ug/mL)
ORF Nucleotide Sequence:	>RC205587 ORF sequence Red=Cloning site Blue=ORF Green=Tags(s)

TTTTGTAATACGACTCACTATAGGGCGGCCGGAATTCGTCGACTGGATCCGGTACCGAGGAGATCTGCC
GCC**CGGATCGCC**

ATGAAAAAGTCCTGGATGCTGTGGAACCTTTGTTGAAAGATGGCTAATAGCCTTGGCTTCATGGTCTTGGG
CTCTCTGCCGTATTTCTCTTTTACCTTTAATAGTGACTTTTCATCTGTATGGAGGCATTATCTACTTTT
GTTAATATTCATATCAATAGCAGGTATTCTGTATAAATCCAGGATGATTGCTTTATTTTCCAGAACAG
CCATCCTCTTCAGTCTTATGTTCCCATGCCACTGGCATTCCACATGAAAACATTTTCATCAGAACCA
AAGATGGAATACGTCTGAATCTTATTTTGATACGATACACTGGAGACAATTCACCCTATTCCTCAACTAT
AATTTATTTTCATGGGAATGCAGGCAACATAGGTCACAGGTTGCCAAATGCATTACTTATGTTGGTTAAC
CTCAAAGTTAACCTTTTCTGGTGGATTATCGAGGATATGGAAAAAGTGAAGGAGAAGCAAGTGAAGAAG
GACTCTACTTAGATTCTGAAGCTGTGTTAGACTACGTGATGACTAGACCTGACCTTGATAAAAAAAAAT
TTTTCTTTTGGCCGTTCTTGGGTGGAGCAGTGGCTATTCATTTGGCTTCTGAAAATTCACATAGGATT
TCAGCCATTATGGTGGAGAACACATTTTAAGCATACCACATATGGCCAGCACTTTATTTTCATTCTTTC
CGATGCGTTACCTTCCTTATGGTGCTACAAAAATAAATTTTGTCTACAGAAAAATCTCTCAGTGTAG
AATGCCTTCACTTTTCATCTCTGGACTCTCAGATCAATTAATCCACCAGTAATGATGAAACAACCTTTAT
GAACTCCTCCATCTCGGACTAAGAGATTAGCCATTTTCCAGATGGGACTCACAATGACACATGGCAGT
GCCAAGGCTATTTCACTGCACTTGAACAGTTCATCAAAGAAGTCGTAAGAGCCATTCTCCTGAAGAAAT
GGCAAAAACCTTCATCTAATGTAACAATTATA

ACGCGTACGCGGCCGCTCGAGCAGAAACTCATCTCAGAAGAGGATCTGGCAGCAAATGATATCCTGGATT
ACAAGGATGACGACGATAAGGTTTAA



[View online »](#)

Protein Sequence: >RC205587 protein sequence
Red=Cloning site Green=Tags(s)

MEKSWMLWNFVERWLIALASWSWALCRISLLPLIVTFHLYGGIILLLLIFISIAGILYKFQDVLVYFPEQ
 PSSSRLYVPMPTGIPHENIFIRTKDGIRLNLILIRYTGDNSPYSPTIIYFHGNAGNIGHRLPNALLMLVN
 LKVNLLLVDRGYGKSEGEASEEGLYLDSEAVLDYVMTRPDLDKTKIFLFRSLGGAVAIHLASENSHRI
 SAIMVENTFLSIPHMASTLFSFFPMRYLPLWCYKNKFLSYRKISQCRMPSLFISGLSDQLIPPVMMKQLY
 ELSPSRTKRLAIFPDGTHNDTWQCQGYFTALEQFIKEVVKSHSPEEMAKTSSNVTII

TRTRPLEQKLISEEDLAANDILDYKDDDDKV

Chromatograms: https://cdn.origene.com/chromatograms/mk6313_b08.zip

Restriction Sites: SgfI-MluI

Cloning Scheme:



ACCN: NM_032859

ORF Size: 1011 bp

OTI Disclaimer: The molecular sequence of this clone aligns with the gene accession number as a point of reference only. However, individual transcript sequences of the same gene can differ through naturally occurring variations (e.g. polymorphisms), each with its own valid existence. This clone is substantially in agreement with the reference, but a complete review of all prevailing variants is recommended prior to use. [More info](#)

OTI Annotation: This clone was engineered to express the complete ORF with an expression tag. Expression varies depending on the nature of the gene.

Components: The ORF clone is ion-exchange column purified and shipped in a 2D barcoded Matrix tube containing 10ug of transfection-ready, dried plasmid DNA (reconstitute with 100 ul of water).

Reconstitution Method:

1. Centrifuge at 5,000xg for 5min.
2. Carefully open the tube and add 100ul of sterile water to dissolve the DNA.
3. Close the tube and incubate for 10 minutes at room temperature.
4. Briefly vortex the tube and then do a quick spin (less than 5000xg) to concentrate the liquid at the bottom.
5. Store the suspended plasmid at -20°C. The DNA is stable for at least one year from date of shipping when stored at -20°C.

RefSeq: [NM_032859.3](#)

RefSeq Size: 5316 bp

RefSeq ORF: 1014 bp

Locus ID: 84945

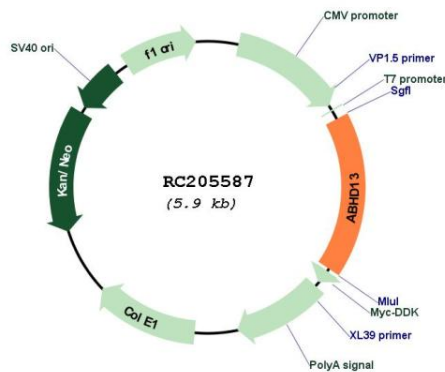
UniProt ID: [Q7L211](#)

Cytogenetics: 13q33.3

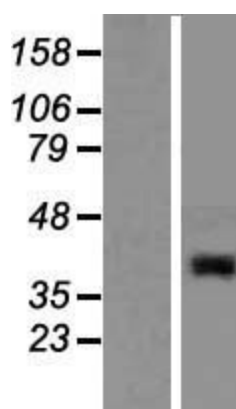
Protein Families: Protease, Transmembrane

MW: 38.5 kDa

Product images:



Circular map for RC205587



Western blot validation of overexpression lysate (Cat# [LY409893]) using anti-DDK antibody (Cat# [TA50011-100]). Left: Cell lysates from untransfected HEK293T cells; Right: Cell lysates from HEK293T cells transfected with RC205587 using transfection reagent MegaTran 2.0 (Cat# [TT210002]).