

## Product datasheet for RC205585

### DENND1B (NM\_144977) Human Tagged ORF Clone

#### Product data:

Product Type:	Expression Plasmids
Product Name:	DENND1B (NM_144977) Human Tagged ORF Clone
Tag:	Myc-DDK
Symbol:	DENND1B
Synonyms:	C1ORF18; C1orf218; FAM31B
Mammalian Cell Selection:	Neomycin
Vector:	pCMV6-Entry (PS100001)
E. coli Selection:	Kanamycin (25 ug/mL)
ORF Nucleotide Sequence:	>RC205585 ORF sequence Red=Cloning site Blue=ORF Green=Tags(s)

TTTTGTAATACGACTCACTATAGGGCGGCCGGAATTCGTCGACTGGATCCGGTACCGAGGAGATCTGCC  
GCC**CGATCGCC**

ATGGCGGCAGCTCCACGGGAGGAGAAAAGATGGCCCCAACCTGTATTTTCGAATCCTGTGGTATTGTGGA  
AATTCCCAGAGGACTTTGGAGACCAGGAAATACTACAGAGTGTGCCAAAGTTCTGTTTTCCCTTTGACGT  
TGAAAGGGTGTCTCAGAATCAAGTTGGACAGCACTTTACCTTTGACTGACAGACATTGAAAGTAAACAG  
AGATTTGGATTCTGCAGACTGACGTGAGGAGCACAATTTGTTTATGCATCCTTAGTTACCTTCCCTGGT  
TTGAAGTGTATTACAAGCTTCTAAATACTCTTGACAGATTACTGGCTAAGGAACTGGAAAATGATTTGAA  
TGAAACTCTCAGATCACTGTATAACCACCCAGTACCAAAGGCAAATACTCCTGTAATTTGAGTGTGCAT  
TCTACTTCATTGCCCTGATGTAAGTGGACTCCAACAATACCCGAGAGTAGAAATCTTACAGAATATT  
TTGTTGCCGTGGATGTGAACAACATGCTGCAGCTGTATGCCAGTATGCTGCATGAAAGGCCGATCGTGAT  
TATCTCGAGCAAATTAAGCACTTAACTGCCTGTATCCATGGATCAGCTGCTCTTCTATACCCAATGAT  
TGGCAACACATATACATCCCAGTGCTTCTCCACACCTGCTGGACTACTGCTGTGCCCAATGCCATACC  
TGATTGGAATACACTCCAGCCTCATAGAGAGAGTGAAAAACAAATCATTGGAAGATGTTGTTATGTTAAA  
TGTTGATACAAACACATTAGAATCACCATTTAGTGACTTGAACAACCTACCAAGTATGTGGTCTCGGCC  
TTGAAAAATAAACTGAAGAAGCAGTCTACAGCTACGGGTGATGGAGTAGCTAGGCCCTTTCTTAGAGCAC  
AGGCTGCTTTGTTGGATACTACAGAGATGCACTGAGATACAAACCTGGTGAGCCCATCACTTTCTGTGA  
GGAGAGTTTTGTAAGCACCGCTCAAGCGTGATGAAACAGTTCCTGGAACTGCCATTAACCTCCAGCTT  
TTAAGCAGTTTTATCGATGGTCGACTGGCAAACTAAATGCAGGAAGGGTTTTCTCTGATGATTTGAAAG  
AAGAGTCACTTCAGGTGGCTTTTGTGGAGGTAAGACAAGTTACAATATGATTATCCATTTTCTCAA

**ACGCGT**ACGCGGCCGCTCGAGCAGAACTCATCTCAGAAGAGGATCTGGCAGCAAATGATATCCTGGATT  
ACAAGGATGACGACGATAAGGTTTAA



[View online >](#)

**Protein Sequence:** >RC205585 protein sequence  
Red=Cloning site Green=Tags(s)

MAAAPREEKRWPQPVFSNPVVLWKFPEDFGDQEILQSVPKFCFPFDVERVSQNQVGHFTFVLTDIESKQ  
 RFGFCRLTSSGTICLCILSYLPWFVEVYKLLNLTADYLAKELNDLNETLRSLYNHPVPKANTPVNLVH  
 SYFIADPVTGLPTIPESRNLTEYFVAVDVNNMLQLYASMLHERRIVIISSKLSTLTACIHGSAALLYPMY  
 WQHIIYIPVLPPLLDDYCCAMPYILIGIHSSLIERVKNKSLEDVMLNVDNTLTLESFSDLNLPDSDVSA  
 LKKNLKKQSTATGDGVARAFLRAQAALFGYYRDALRYKPGEPITFCEESFVKHRSSVMKQFLETAIINLQL  
 FKQFIDGRLAKLNAGRGFSDVFEEIITSGFGCGKDKLQDYDYPFSQ

TRTRPLEQKLISEEDLAANDILDYKDDDDKV

**Chromatograms:** [https://cdn.origene.com/chromatograms/mk6312\\_b12.zip](https://cdn.origene.com/chromatograms/mk6312_b12.zip)

**Restriction Sites:** SgfI-MluI

**Cloning Scheme:**



\* The last codon before the Stop codon of the ORF

**ACCN:** NM\_144977

**ORF Size:** 1188 bp

**OTI Disclaimer:** The molecular sequence of this clone aligns with the gene accession number as a point of reference only. However, individual transcript sequences of the same gene can differ through naturally occurring variations (e.g. polymorphisms), each with its own valid existence. This clone is substantially in agreement with the reference, but a complete review of all prevailing variants is recommended prior to use. [More info](#)

**OTI Annotation:** This clone was engineered to express the complete ORF with an expression tag. Expression varies depending on the nature of the gene.

**Components:** The ORF clone is ion-exchange column purified and shipped in a 2D barcoded Matrix tube containing 10ug of transfection-ready, dried plasmid DNA (reconstitute with 100 ul of water).

**Reconstitution Method:**

1. Centrifuge at 5,000xg for 5min.
2. Carefully open the tube and add 100ul of sterile water to dissolve the DNA.
3. Close the tube and incubate for 10 minutes at room temperature.
4. Briefly vortex the tube and then do a quick spin (less than 5000xg) to concentrate the liquid at the bottom.
5. Store the suspended plasmid at -20°C. The DNA is stable for at least one year from date of shipping when stored at -20°C.

**RefSeq:** [NM\\_144977.2](#)

**RefSeq Size:** 2380 bp

**RefSeq ORF:** 1281 bp

**Locus ID:** 163486

**UniProt ID:** [Q6P3S1](#)

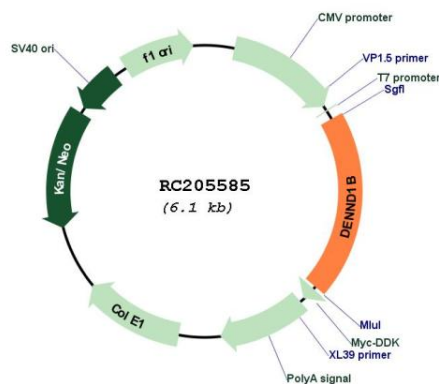
**Cytogenetics:** 1q31.3

**Protein Families:** Transmembrane

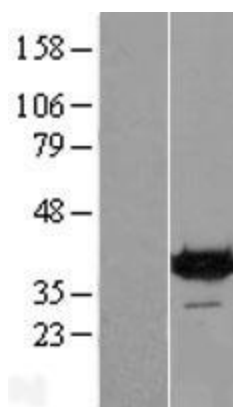
**MW:** 45 kDa

**Gene Summary:** Clathrin (see MIM 118955)-mediated endocytosis is a major mechanism for internalization of proteins and lipids. Members of the connectenn family, such as DENND1B, function as guanine nucleotide exchange factors (GEFs) for the early endosomal small GTPase RAB35 (MIM 604199) and bind to clathrin and clathrin adaptor protein-2 (AP2; see MIM 601024). Thus, connectenns link RAB35 activation with the clathrin machinery (Marat and McPherson, 2010 [PubMed 20154091]).[supplied by OMIM, Nov 2010]

## Product images:



Circular map for RC205585



Western blot validation of overexpression lysate (Cat# [LY408118]) using anti-DDK antibody (Cat# [TA50011-100]). Left: Cell lysates from untransfected HEK293T cells; Right: Cell lysates from HEK293T cells transfected with RC205585 using transfection reagent MegaTran 2.0 (Cat# [TT210002]).