

## Product datasheet for RC205575

### EID3 (NM\_001008394) Human Tagged ORF Clone

#### Product data:

Product Type:	Expression Plasmids
Product Name:	EID3 (NM_001008394) Human Tagged ORF Clone
Tag:	Myc-DDK
Symbol:	EID3
Synonyms:	NS4EB; NSE4B; NSMCE4B
Mammalian Cell Selection:	Neomycin
Vector:	pCMV6-Entry (PS100001)
E. coli Selection:	Kanamycin (25 ug/mL)
ORF Nucleotide Sequence:	>RC205575 ORF sequence Red=Cloning site Blue=ORF Green=Tags(s)

TTTTGTAATACGACTCACTATAGGGCGGCCGGAATTCGTCGACTGGATCCGGTACCGAGGAGATCTGCC  
GCC**CGGATCGCC**

ATGAAGATGGATGTGTCAGTGAGGGCCGCGGGCTGCTCCGACGACCTCAGCTCTGGGGAGGCCGACGTAG  
ACCCAAAGCTCCTGGAGCTCACCCTGACGAGGAGAAGTGCCGACGATCCGCAGGCAGTACCGGCAGCT  
CATGTACTGCGTGCGGCAGAACCGGGAGGACATCGTGAGCTCGGCGAACAACTCCTTAACCGAGGCTCTG  
GAGGAAGCCAACGTCCTCTTTGATGGCGTGAGCCGAACCAGAGAAGCAGCCCTCGACGCCGGTTTCTTG  
TTATGGCTTCTGATTTGGGTAAGAAAAGCAAAGCAGTTAACTCAGATATGAACCTTTAATCAGTT  
AGCATTTTGTGACTTTCTGTTTCTGTTCTGTTGGTCTGAATTGGATGGAAGGCGATCCTGACAAGTTGAGT  
GATTGTGATGATAGCATAGCTCTTTCTCTCGAAGGCAATAGAAAAGGAAGCAACATCCTGGATGGTAA  
AAGCTGAGACATTCATTTTGTGTTTGGTTCAATCAAGCTAGAACGTTCTGCACCAAAGCCCGACTTGA  
ACACCAGAAAAAGTTTCGCAAGATGGAAGAAAATGGCAACATGCCTACAAAGTTGCAGAAGTTGGACCTG  
AGTAGTTATCCAGAAGCGACAGAAAAAACGTAGAAAGGATTTGGGATTGTTGCAAACCTACTTTTCGAA  
AGTATCCTGATACTCCTGTGCTATTTTGAGTTTGTGATTGATCCAACTCTTTTTCTCGTACTGTGGA  
GAATATATTTTATGTTTCTTTTATTGTAAGAGATGGTTTTGCAAGAATAAGGCTTGATGAAGACAGGCTG  
CCAATATTAGCCGATGAATGTTAACCAAATGGGTGAGGAAATGATTCCAGTTGCCATGGCAGGAAAC  
AGGGAGTTATATCTTTGACTTTACAGGAGTGAAAAACATTGTGGCAGCTTTTGAATTTCTGAGGCTAT  
GATTACATACTCCTCATA

**ACGCGT**ACGCGGCCGCTCGAGCAGAACTCATCTCAGAAGAGGATCTGGCAGCAAATGATATCCTGGATT  
ACAAGGATGACGACGATAAGGTTTAA



[View online »](#)

**Protein Sequence:** >RC205575 protein sequence  
Red=Cloning site Green=Tags(s)

MKMDVSVRAAGCSDDLSSGEADVDPKLELTADEEKCRSIRRQYRQLMYCVRQNREDIVSSANSLTEAL  
 EEANVLFDGVSRTREALDARFLVMASDLGKEKAKQLNSDMNFFNQLAFCDLFLFVGLNWMEGDPDKLS  
 DCDDSIALSFWKAIEKEATSWMVKAETFHFVFGSFKLERSAPKPRLEHQKVKRMEENGMPTKLQKLDL  
 SSYPEATEKNVERILGLLQTYFRKYPDTPVSYFEFVIDPNSFSRTVENIFYVSFIVRDGFARIRLDEDRL  
 PILEPMNVNQMGEGNDSSCHGRKQGVISLTLQEWKNIVAAFEISEAMITYSSY

TRTRPLEQKLISEEDLAANDILDYKDDDDKV

**Chromatograms:** [https://cdn.origene.com/chromatograms/mk6316\\_e09.zip](https://cdn.origene.com/chromatograms/mk6316_e09.zip)

**Restriction Sites:** SgfI-MluI

**Cloning Scheme:**

Cloning sites used for ORF Shuttling:



\* The last codon before the Stop codon of the ORF

**ACCN:** NM\_001008394

**ORF Size:** 999 bp

**OTI Disclaimer:** The molecular sequence of this clone aligns with the gene accession number as a point of reference only. However, individual transcript sequences of the same gene can differ through naturally occurring variations (e.g. polymorphisms), each with its own valid existence. This clone is substantially in agreement with the reference, but a complete review of all prevailing variants is recommended prior to use. [More info](#)

**OTI Annotation:** This clone was engineered to express the complete ORF with an expression tag. Expression varies depending on the nature of the gene.

**Components:** The ORF clone is ion-exchange column purified and shipped in a 2D barcoded Matrix tube containing 10ug of transfection-ready, dried plasmid DNA (reconstitute with 100 ul of water).

**Reconstitution Method:**

1. Centrifuge at 5,000xg for 5min.
2. Carefully open the tube and add 100ul of sterile water to dissolve the DNA.
3. Close the tube and incubate for 10 minutes at room temperature.
4. Briefly vortex the tube and then do a quick spin (less than 5000xg) to concentrate the liquid at the bottom.
5. Store the suspended plasmid at -20°C. The DNA is stable for at least one year from date of shipping when stored at -20°C.

**RefSeq:** [NM\\_001008394.3](#)

**RefSeq Size:** 1486 bp

**RefSeq ORF:** 1002 bp

**Locus ID:** 493861

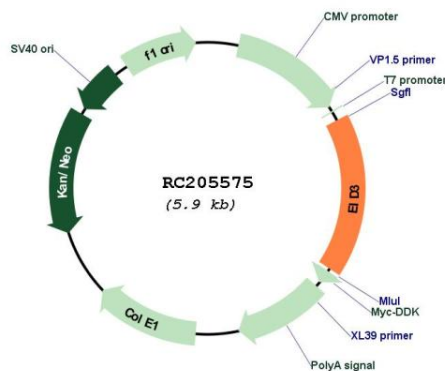
**UniProt ID:** [Q8N140](#)

**Cytogenetics:** 12q23.3

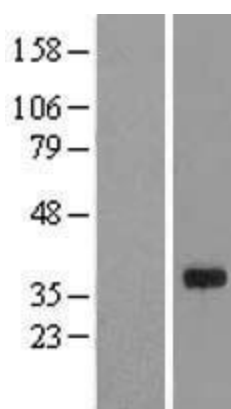
**MW:** 38.2 kDa

**Gene Summary:** Tissue-specific component of the SMC5-SMC6 complex, a complex involved in repair of DNA double-strand breaks by homologous recombination. The complex may promote sister chromatid homologous recombination by recruiting the SMC1-SMC3 cohesin complex to double-strand breaks. The complex is required for telomere maintenance via recombination and mediates sumoylation of shelterin complex (telosome) components.[UniProtKB/Swiss-Prot Function]

### Product images:



Circular map for RC205575



Western blot validation of overexpression lysate (Cat# [LY423421]) using anti-DDK antibody (Cat# [TA50011-100]). Left: Cell lysates from untransfected HEK293T cells; Right: Cell lysates from HEK293T cells transfected with RC205575 using transfection reagent MegaTran 2.0 (Cat# [TT210002]).