

Product datasheet for **RC205574**

RBM46 (NM_144979) Human Tagged ORF Clone

Product data:

Product Type:	Expression Plasmids
Product Name:	RBM46 (NM_144979) Human Tagged ORF Clone
Tag:	Myc-DDK
Symbol:	RBM46
Synonyms:	CT68
Mammalian Cell Selection:	Neomycin
Vector:	pCMV6-Entry (PS100001)
E. coli Selection:	Kanamycin (25 ug/mL)



[View online »](#)

ORF Nucleotide Sequence:

>RC205574 ORF sequence
 Red=Cloning site Blue=ORF Green=Tags(s)

TTTTGTAATACGACTCACTATAGGGCGGCCGGGAATTCGTCGACTGGATCCGGTACCGAGGAGATCTGCC
 GCC**GCGATCGCC**

ATGAATGAAGAAAATATAGATGGAACAAATGGATGCAGTAAAGTTCGAACTGGTATTCAGAATGAAGCAG
 CATTACTTGCTTTGATGGAAGAACTGGTTACAACATGGTTCAGGAAAATGGACAAAAGAAAATTTGGCGG
 TCCTCCTCCAGGTTGGGAAGGTCCACCTCCACCTAGAGGCTGTGAAGTTTTGTAGGAAAAATACCTCGT
 GATATGTATGAAGATGAGTTAGTTCCTGTATTTGAAAGAGCTGGGAAGATATATGAATTCGACTTATGA
 TGGAAATTTAGTGGTGAAGAACTGAGGTTATGCTTTTGTGATGTACACTACAAAAGAAGAAGCCCAATTAGC
 CATCAGAATTCCTAATAATTATGAAATTCGACCAGGGAAGTTTATTGGTGTGTGTGAAGCCTGGATAAT
 TGTAGATTATTTATTGGAGCTATCCCAAGGAAAAGAAGAAGAAGAAAATTTAGATGAAATGAAGAAAAG
 TTACAGAAGGAGTTGTAGATGTCATTGTTTATCCAAGTCAACTGATAAGACAAAAATCGTGGTTTTGC
 ATTTGTGGAATATGAATCTCACAGAGCTGCTGCTATGGCAAGGAGGAACTAATTCAGGAACATCCAA
 CTATGGGGCCACACCATTAGGTAGATTGGGCTGACCCAGAGAAAAGAGGTGGATGAGGAAACCATGCAGA
 GAGTTAAAGTTCTTTATGTAAGAAAATTAATGATCTCAACTACAGAGGAAACAATTAAGCAGAATTCAA
 TAAATTTAAGCCTGGTGCAGTTGAACGGGTAAGAAAATCTAGAGATTATGCTTTTGTTCACCTTTTCAAC
 CGAGAAGATGCAGTGGCTGCCATGTCTGTTATGAATGGAAAATGCATTGATGGAGCAAGTATTGAGGTAA
 CACTAGCTAAACCAGTAAATAAAGAAAACACTGGAGACAGCATCTTAATGGTCAGATTAGTCCAAATTC
 TGAAAATCTGATTGTGTTGCTAACAAAAGAAGAGGCCACCCAAAAACTTAGGCAAGCTGCCAACTCTT
 CCTGCTCGTCTCAATGGTCAGCATAGCCCAAGTCCGCCTGAAGTTGAAAGATGCACCTACCTTTTTATC
 CTGGAACAAAGCTTACTCCAATTAGTATGATTTCTTTAAAAATCCAATCATTTTAATCTCGCAGTAATGCA
 TTTGGATTATTACTGCAACAAAAATAACTGGGCACCACCAGAATATTATTATATTCAACAACAAGTCAA
 GATGGGAAAGTACTCTTGGTGTATAAGATGTTATTCCTGCTATTGCAAATGGATCCCAGAGTTACTTCA
 TGCCAGACAAACTCTGTACTACGTTAGAAGATGCAAAGGAACTGGCAGCCAGTTTACATTACTTCATTT
 GGACTACAATTTCCATCGCAGCTCAATAAATAGTCTTTCCCTGTTAGTGTACCCTCTCTTCTGGGACT
 CCCAGCGTGCTTCTTATACTTCAAGGCCTTATTCTTATCCAGGCTATCCTTTGTCACCAACAATATCAC
 TTGCTAATGGCAGCCATGTTGGACAGCGGCTATGTATCTCCAATCAGGCCTCCTTCTTC

ACGCGTACGCGGCCGCTCGAGCAGAAACTCATCTCAGAAGAGGATCTGGCAGCAAATGATATCCTGGATT
 ACAAGGATGACGACGATAAGGTTTAA

Protein Sequence:

>RC205574 protein sequence
 Red=Cloning site Green=Tags(s)

MNEENIDGTNGCSKVRTGIQNEAALLALMEKTYNMQVQENGQRKFGPPPGWEGPPPPRGEVFGKIPR
 DMYEDELVPVFERAGKIYEFRLMMEFSGENRGYAFVMTTKEEAQLAIRILNNYEIRPGKFIGVCVSLDN
 CRLFIGAIPKEKKKEEILDEMKKVTEGVVDVIVYPSATDKTKNRGFAFVEYESHRAAMARRKLIPTGFQ
 LWGHTIQVDWADPEKEVDEETMQRVKLVYVRNLMI STTEETIKAEFNFKPGAVERVKKLRDYAFVHFFN
 REDAVAAMSVMNGKCIDGASIEVTLAKPVNKENTWRQHLNGQISPNSENLIVFANKEESHPKTLGKLP
 PARLNGQHSPSPPEVERCTYPFYPGKLTPI SMYSLKSNHFNSAVMHLDYCNKNWAPPEYYLYSTTSQ
 DGKVLVYKIVIPAIANGSQSYFMPDKLCTTLEDAKELAAQFTLLHLDYNFHRSSINSLSPVSATLSSGT
 PSVLPYTSRPYSYPGYPLSPTISLANGSHVQRLCISNQASFF

TRTRPLEQKLISEEDLAANDILDYKDDDDKV

Chromatograms:

https://cdn.origene.com/chromatograms/mk6316_e05.zip

Restriction Sites:

Sgfl-MluI

Cloning Scheme:


ACCN: NM_144979

ORF Size: 1599 bp

OTI Disclaimer: The molecular sequence of this clone aligns with the gene accession number as a point of reference only. However, individual transcript sequences of the same gene can differ through naturally occurring variations (e.g. polymorphisms), each with its own valid existence. This clone is substantially in agreement with the reference, but a complete review of all prevailing variants is recommended prior to use. [More info](#)

OTI Annotation: This clone was engineered to express the complete ORF with an expression tag. Expression varies depending on the nature of the gene.

Components: The ORF clone is ion-exchange column purified and shipped in a 2D barcoded Matrix tube containing 10ug of transfection-ready, dried plasmid DNA (reconstitute with 100 ul of water).

- Reconstitution Method:**
1. Centrifuge at 5,000xg for 5min.
 2. Carefully open the tube and add 100ul of sterile water to dissolve the DNA.
 3. Close the tube and incubate for 10 minutes at room temperature.
 4. Briefly vortex the tube and then do a quick spin (less than 5000xg) to concentrate the liquid at the bottom.
 5. Store the suspended plasmid at -20°C. The DNA is stable for at least one year from date of shipping when stored at -20°C.

RefSeq: [NM_144979.5](#)

RefSeq Size: 2539 bp

RefSeq ORF: 1602 bp

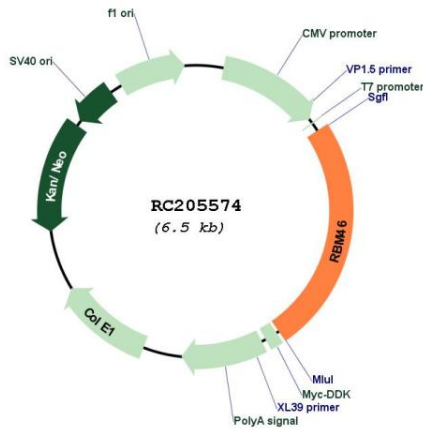
Locus ID: 166863

UniProt ID: [Q8TBY0](#)

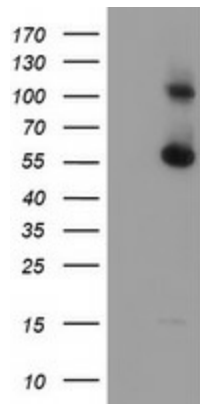
Cytogenetics: 4q32.1

MW: 60 kDa

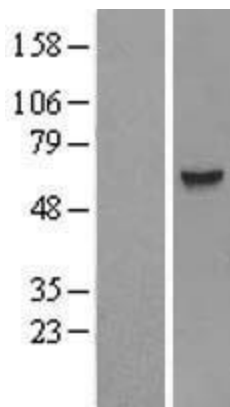
Product images:



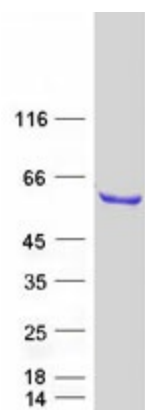
Circular map for RC205574



HEK293T cells were transfected with the pCMV6-ENTRY control (Cat# [PS100001], Left lane) or pCMV6-ENTRY RBM46 (Cat# RC205574, Right lane) cDNA for 48 hrs and lysed. Equivalent amounts of cell lysates (5 ug per lane) were separated by SDS-PAGE and immunoblotted with anti-RBM46 (Cat# [TA504623]). Positive lysates [LY408120] (100ug) and [LC408120] (20ug) can be purchased separately from OriGene.



Western blot validation of overexpression lysate (Cat# [LY408120]) using anti-DDK antibody (Cat# [TA50011-100]). Left: Cell lysates from untransfected HEK293T cells; Right: Cell lysates from HEK293T cells transfected with RC205574 using transfection reagent MegaTran 2.0 (Cat# [TT210002]).



Coomassie blue staining of purified RBM46 protein (Cat# [TP305574]). The protein was produced from HEK293T cells transfected with RBM46 cDNA clone (Cat# RC205574) using MegaTran 2.0 (Cat# [TT210002]).