

Product datasheet for **RC205570**

CT45A5 (NM_001007551) Human Tagged ORF Clone

Product data:

Product Type:	Expression Plasmids
Product Name:	CT45A5 (NM_001007551) Human Tagged ORF Clone
Tag:	Myc-DDK
Symbol:	CT45A5
Synonyms:	CT45-3; CT45-4; CT45-6; CT45.5; CT45A3; CT45A4; CT45A6; CT45A7; CT455
Mammalian Cell Selection:	Neomycin
Vector:	pCMV6-Entry (PS100001)
E. coli Selection:	Kanamycin (25 ug/mL)
ORF Nucleotide Sequence:	>RC205570 ORF sequence Red=Cloning site Blue=ORF Green=Tags(s)

TTTTGTAATACGACTCACTATAGGGCGGCCGGAATTCGTCGACTGGATCCGGTACCGAGGAGATCTGCC
GCC**CGATCGC**

ATGACCGATAAAACAGAGAAGGTGGCTGTAGATCCTGAACTGTGTTTAAACGTCCCAGGGAATGTGACA
GTCCTTCGTATCAGAAAAGGCAGAGGATGGCCCTGTTGGCAAGGAAACAAGGAGCAGGAGACAGCCTTAT
TGCAGGCTCTGCCATGTCCAAAGAAAAGAAGCTTATGACAGGACATGCTATTCCACCCAGCCAATTGGAT
TCTCAGATTGATGACTTCACTGGTTTCAGCAAAGATAGGATGATGCAGAAACCTGGTAGCAATGCACCTG
TGGGAGGAAACGTTACCAGCAGTTTCTCTGGAGATGACCTAGAATGCAGAGAAACAGCCTCCTCTCCCAA
AAGCCAACGAGAAATTAATGCTGATATAAAACGTAAATAGTGAAGGAACCTCCGATGCGTTGGACAAAAA
TATGAAAAATCTTCGAAATGCTTGAAGGAGTGAAGGACCTACTGCAGTCAGGAAGCGATTTTTTGAAT
CCATCATCAAGGAAGCAGCAAGATGTATGAGACGAGACTTTGTTAAGCACCTTAAGAAGAACTGAAACG
TATGATT

ACGCGTACGCGGCCGCTCGAGCAGAACTCATCTCAGAAGAGGATCTGGCAGCAAATGATATCCTGGATT
ACAAGGATGACGACGATAAGGTTTAA

Protein Sequence:	>RC205570 protein sequence Red=Cloning site Green=Tags(s)
-------------------	--

MTDKTEKVAVDPETVFKRPRECDSPSYQKRQRMALLARKQGAGDSLIAGSAMSKEKKLMTGHAIPPSQLD
SQIDDFTGFSKDRMMQKPGSNAPVGGNVTSSFSGDDLECRETASSPKSQREINADIKRKLVKELRCVGQK
YEKIFEMLEGVQGPTAVRKRFFESIIEAARCMRRDFVKHLKKLKRMI

TRTRPLEQKLISEEDLAANDILDYKDDDDKV

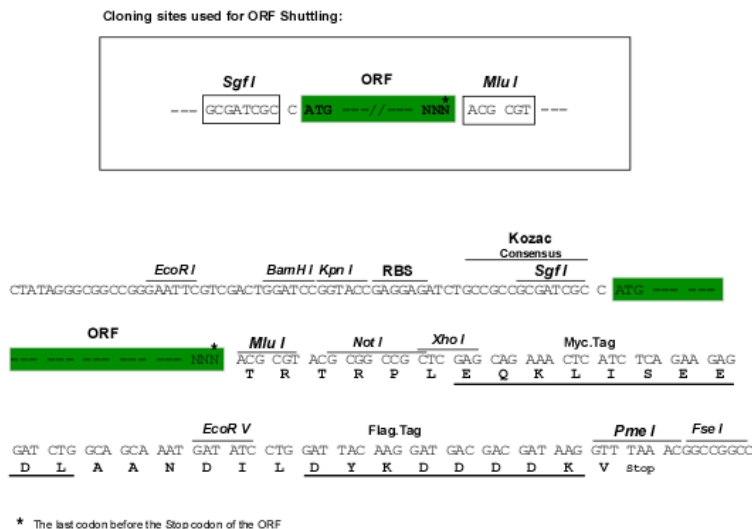


[View online »](#)

Chromatograms: https://cdn.origene.com/chromatograms/mk6536_d01.zip

Restriction Sites: SgfI-MluI

Cloning Scheme:



ACCN: NM_001007551

ORF Size: 567 bp

OTI Disclaimer: The molecular sequence of this clone aligns with the gene accession number as a point of reference only. However, individual transcript sequences of the same gene can differ through naturally occurring variations (e.g. polymorphisms), each with its own valid existence. This clone is substantially in agreement with the reference, but a complete review of all prevailing variants is recommended prior to use. [More info](#)

OTI Annotation: This clone was engineered to express the complete ORF with an expression tag. Expression varies depending on the nature of the gene.

Components: The ORF clone is ion-exchange column purified and shipped in a 2D barcoded Matrix tube containing 10ug of transfection-ready, dried plasmid DNA (reconstitute with 100 ul of water).

Reconstitution Method:

1. Centrifuge at 5,000xg for 5min.
2. Carefully open the tube and add 100ul of sterile water to dissolve the DNA.
3. Close the tube and incubate for 10 minutes at room temperature.
4. Briefly vortex the tube and then do a quick spin (less than 5000xg) to concentrate the liquid at the bottom.
5. Store the suspended plasmid at -20°C. The DNA is stable for at least one year from date of shipping when stored at -20°C.

RefSeq: [NM_001007551.4](#), [NP_001007552.2](#)

RefSeq Size: 1321 bp

RefSeq ORF: 570 bp

Locus ID: 441521

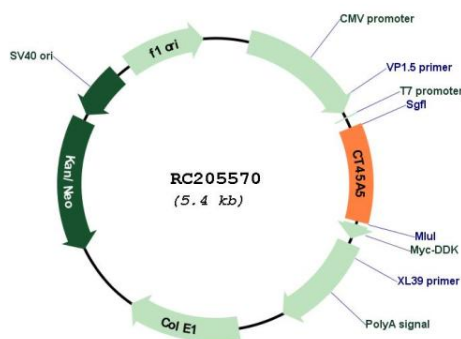
UniProt ID: [Q6NSH3](#)

Cytogenetics: Xq26.3

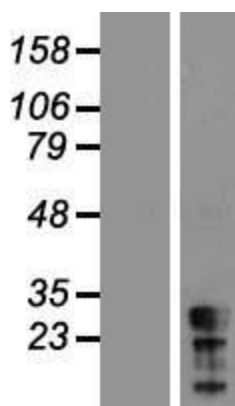
MW: 21.3 kDa

Gene Summary: This gene represents one of a cluster of several similar genes located on the q arm of chromosome X. The genes in this cluster encode members of the cancer/testis (CT) family of antigens, and are distinct from other CT antigens. These antigens are thought to be novel therapeutic targets for human cancers. Alternative splicing results in multiple transcript variants. [provided by RefSeq, Apr 2014]

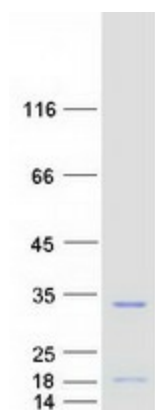
Product images:



Circular map for RC205570



Western blot validation of overexpression lysate (Cat# [LY423509]) using anti-DDK antibody (Cat# [TA50011-100]). Left: Cell lysates from untransfected HEK293T cells; Right: Cell lysates from HEK293T cells transfected with RC205570 using transfection reagent MegaTran 2.0 (Cat# [TT210002]).



Coomassie blue staining of purified CT45A5 protein (Cat# [TP305570]). The protein was produced from HEK293T cells transfected with CT45A5 cDNA clone (Cat# RC205570) using MegaTran 2.0 (Cat# [TT210002]).