

## Product datasheet for RC205566

### SLFNL1 (NM\_144990) Human Tagged ORF Clone

#### Product data:

Product Type:	Expression Plasmids
Product Name:	SLFNL1 (NM_144990) Human Tagged ORF Clone
Tag:	Myc-DDK
Symbol:	SLFNL1
Mammalian Cell Selection:	Neomycin
Vector:	pCMV6-Entry (PS100001)
E. coli Selection:	Kanamycin (25 ug/mL)
ORF Nucleotide Sequence:	>RC205566 ORF sequence Red=Cloning site Blue=ORF Green=Tags(s)

TTTTGTAATACGACTCACTATAGGGCGGCCGGAATTCGTCGACTGGATCCGGTACCGAGGAGATCTGCC  
GCC**CGATCGCC**

ATGACCCCATGAAGAGATCAGTGCAAACACAGGTGTCAGAGCCCTTCATGGAGTCTGGGGTGAGGAGT  
CCCTGCCGGAGCTACCCGAGAGCAGTCCCTGACGGAGTACTCTGACCTCGAGGAGGCTCCCTCGGC  
CACTCTCTATGTGGGCCATCTGAACCCAGTTCTCAGTGCCGGTGTTCCTGCCTGCTGCGAGACACC  
CTGGAGCGGCTGGAGATGCCGGTGGCGCGGGAGCACATTGAAGTGGTGGAGCGCCGCGGAAGCCATG  
CACTGGTGCAGGTGACTGTCCACAGGGACACCCTGGCCTCCCTGGCGCCTGCAGACGGCCCTGGA  
GGAGCACCTAATCCTCAAGGAGCTGGCAGCCAGTGGGAAGGACCTGCTATTGAGTGAGGCCCAAGGGCCC  
TTCAGCCACAGAGAGGAGAAGGAGGAGGAGGAGGACAGTGGCCTGAGCCCTGGCCCCAGTCCAGGCT  
CTGGTGTCCCCTGCCCACCTGGCCTACACACAGCTGCCTGATAGGCCCCAGGCCAGCAGCTGCAGAG  
CTGCCAGGGCCGGCCAGCGGCTGTGCTCCGACAGTGCATTGTGCACCAGCAGATCGTGGCAAGGAC  
CAGCTCTCCAGGGTGCCTTCTGGGCAGCGAGACCCGCAATATGGAGTCAAGCGGGTAGCGGCGAGT  
ACCTCAGCCTGGCCTTCAAGCACAGTGCGGCGCTACGTGTGCGCTTCTCAACAGCGAGGGCGGCGAG  
CCTGCTCGTGGGAGTAGAGGACAGCGGCTGGTGCAGGGCATCCGCTGCAGCCACCGTGACGAGGCCG  
GCACGCCTGCTGGTGGACTCCATCCTGCAGGGCTCAAGCCTCAGATCTTCCCAGTGCCTACACTCTCA  
CCTTCATCCCTGTGATCAGTACCTCGGAGACCAGCGTCCCTCAAGGTGATCCGCTGACCGTGCACAC  
CCCCAAGGCCAGAGCCAGCCGCAACTCTACCAGACAGACCAGGGGGAGGTGTTTCTGCGGCGCGACGGG  
AGCATCCAGGGCCGCTGTCTGCCAGCGCCATCCAGGAGTGGTGCAGGCAGAGGTGGCTGGTGGAGCTGG  
GCAAGCTGGAAGAGAAGATGAAGGCGCTGATGATGGAGAAGGAGCAGCTCCAGCAGCAGCTGCAGCAGCA  
CGGGCCTGTCTGCACCTGCTGTGCTCTG

**ACGCGT**ACGCGGCGGCTCGAGCAGAACTCATCTCAGAAGAGGATCTGGCAGCAATGATATCCTGGATT  
ACAAGGATGACGACGATAAGGTTTAA



[View online »](#)

**Protein Sequence:** >RC205566 protein sequence  
Red=Cloning site Green=Tags(s)

MTPMKRSVQTQVSEPFMESWGEEESLPELPAEQSLTEYSDLEEAPSAHTLYVGHLPQFVSPVLACLLRDT  
 LERLEMPVAREHIEVRRPRKAYALVQTVHRDTLASLPWRLQTAL EEHLILKELAAASKDLLLSEAQGP  
 FSHREEKEEEEEESGLSPGSPGSGVPLPTWPTHLPDRPQAQQLQSCQGRPSGVCSDSAIVHQQIVGKD  
 QLFQGAFLGSETRNMEFKRGSGEYLSLAFKHHVRRYVCAFLNSEGGSLLVGVEDSGLVQGI RCSRDRDR  
 ARLLVDSILQGFKPQIFPDAYTLTFIPVISTSETSVP LKVIRLTVHTPKAQSQPQLYQTDQGEVFLRRDG  
 SIQGPLSASAIQEWCQRWLVELGKLEEKMKALMMEKEQLQQQLQHGVPV SCTCCVL

TRTRPLEQKLISEEDLAANDILDYKDDDDKV

**Chromatograms:** [https://cdn.origene.com/chromatograms/mk6315\\_b04.zip](https://cdn.origene.com/chromatograms/mk6315_b04.zip)

**Restriction Sites:** SgfI-MluI

**Cloning Scheme:**

Cloning sites used for ORF Shuttling:



\* The last codon before the Stop codon of the ORF

**ACCN:** NM\_144990

**ORF Size:** 1221 bp

**OTI Disclaimer:** The molecular sequence of this clone aligns with the gene accession number as a point of reference only. However, individual transcript sequences of the same gene can differ through naturally occurring variations (e.g. polymorphisms), each with its own valid existence. This clone is substantially in agreement with the reference, but a complete review of all prevailing variants is recommended prior to use. [More info](#)

**OTI Annotation:** This clone was engineered to express the complete ORF with an expression tag. Expression varies depending on the nature of the gene.

**Components:** The ORF clone is ion-exchange column purified and shipped in a 2D barcoded Matrix tube containing 10ug of transfection-ready, dried plasmid DNA (reconstitute with 100 ul of water).

**Reconstitution Method:**

1. Centrifuge at 5,000xg for 5min.
2. Carefully open the tube and add 100ul of sterile water to dissolve the DNA.
3. Close the tube and incubate for 10 minutes at room temperature.
4. Briefly vortex the tube and then do a quick spin (less than 5000xg) to concentrate the liquid at the bottom.
5. Store the suspended plasmid at -20°C. The DNA is stable for at least one year from date of shipping when stored at -20°C.

**RefSeq:** [NM\\_144990.2](#), [NP\\_659427.2](#)

**RefSeq Size:** 2007 bp

**RefSeq ORF:** 1224 bp

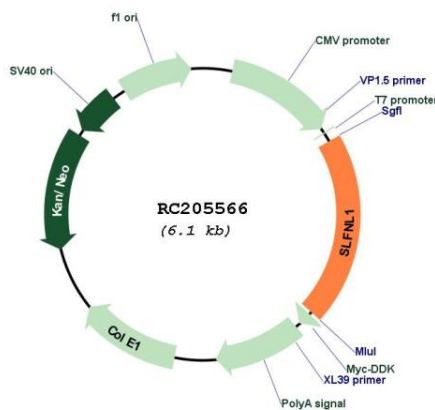
**Locus ID:** 200172

**UniProt ID:** [Q499Z3](#)

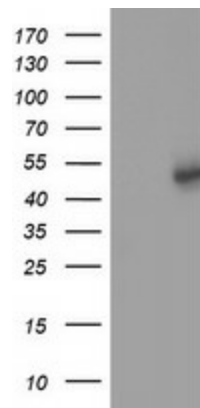
**Cytogenetics:** 1p34.2

**MW:** 45.5 kDa

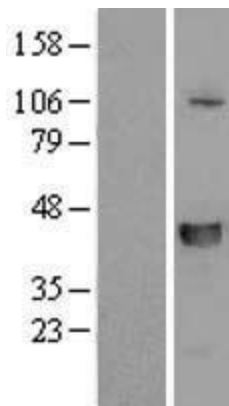
**Product images:**



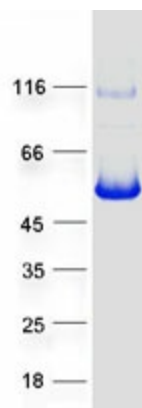
Circular map for RC205566



HEK293T cells were transfected with the pCMV6-ENTRY control (Cat# [PS100001], Left lane) or pCMV6-ENTRY SLFNL1 (Cat# RC205566, Right lane) cDNA for 48 hrs and lysed. Equivalent amounts of cell lysates (5 ug per lane) were separated by SDS-PAGE and immunoblotted with anti-SLFNL1 (Cat# [TA501908]). Positive lysates [LY408129] (100ug) and [LC408129] (20ug) can be purchased separately from OriGene.



Western blot validation of overexpression lysate (Cat# [LY408129]) using anti-DDK antibody (Cat# [TA50011-100]). Left: Cell lysates from untransfected HEK293T cells; Right: Cell lysates from HEK293T cells transfected with RC205566 using transfection reagent MegaTran 2.0 (Cat# [TT210002]).



Coomassie blue staining of purified SLFNL1 protein (Cat# [TP305566]). The protein was produced from HEK293T cells transfected with SLFNL1 cDNA clone (Cat# RC205566) using MegaTran 2.0 (Cat# [TT210002]).