

Product datasheet for **RC205563**

FEM 1C (FEM1C) (NM_020177) Human Tagged ORF Clone

Product data:

Product Type:	Expression Plasmids
Product Name:	FEM 1C (FEM1C) (NM_020177) Human Tagged ORF Clone
Tag:	Myc-DDK
Symbol:	FEM 1C
Synonyms:	EUROIMAGE686608; EUROIMAGE783647; FEM1A
Mammalian Cell Selection:	Neomycin
Vector:	pCMV6-Entry (PS100001)
E. coli Selection:	Kanamycin (25 ug/mL)



[View online »](#)

ORF Nucleotide Sequence:

>RC205563 ORF sequence
 Red=Cloning site Blue=ORF Green=Tags(s)

TTTTGTAATACGACTCACTATAGGGCGGCCGGAATTCGTCGACTGGATCCGGTACCGAGGAGATCTGCC
 GCC**CGATCGCC**

ATGGATCTAAAGACAGCAGTATTTAACGCAGCTCGGGATGGCAAACCTCCGGCTTCTACCAAATTGTTGG
 CAAGCAAATCCAAGAGGAGGTTTCTCCTTGATCTCTGAAAAACAAATGGGGCCACGCCACTCTTGAT
 GGCCGCCAGGTATGGGCACCTTGACATGGTGAATTCTCCTAGAGCAATGCAGTGCCTCCATAGAAGTT
 GGGGGCTCCGTC AATTTTGATGGCGAAACCATTGAGGGGGCTCCCCCTTATGGGCCGCTTCTGCAGCAG
 GACATCTGAAGGTGGTCCAGTCTTGTAAATCATGGAGCATCTGTCAACAACACGACTTTAACCAATTC
 AACTCCTCTTCGAGCTGCGTGTTCGATGGCCATTTGAAATAGTGAAGTACCTTGTAGAACACAAAAGCT
 GATTTGGAAGTGTCAAACCGACATGGGCATACGTGCTTGATGATTTTATGTTACAAGGACATAAAGAGA
 TTGCTCAGTATTTACTTAAAAGGGGCGAGATGTTAATAGAAAAAGTGTCAAAGTAATACTGCATTGCA
 TGATTGTCAGAACTCTGGAAGTTTGACATCATGAAGATGCTTCTTATGTATTGTCCAAGATGGAAAAG
 GATGGTTATGGAATGACTCCCCTTCTCTCAGCAAGTGTGACTGGTACACAAATATTGTGGATTTTCTGA
 CACACCATGCACAGACCAGCAAGACAGAACGTATTAATGCTCTAGAGCTTCTGGGAGCTACATTTGTAGA
 CAAAAAAGAGATCTGCTTGGGGCTTTGAAATACTGAAAAAGGCAATGAACATGAGGTACAGTGATAGG
 ACTAATATTATTAGTAAACAGTGCCACAGACACTAATAATGGCTTATGATTATGCCAAGGAAGTGAACA
 GTGCAGAAGAGCTAGAAGGTCTTATTGCTGATCCTGATGAGATGAGAATGCAGGCACTATTAATCAGAGA
 ACGTATTTCTTGGTCTTCTCATCCTGATACCTTACTATATTAGATATAGAGGCGCTGTCTATGCAGAC
 TCTGAAAATTTCAAACGATGCATCAACCTATGGAAGTATGCTTTGGATATGCAGCAGAGCAATTTGGATC
 CTTTAAGCCCAATGACAGCCAGCAGCTTATTATCTTTTGCAGAACTATTCTCTTTATGCTACAGGATAG
 GGCTAAAGGCCTGCTGGTACTACTGTTACATTTGATGATCTTATGGGCATACTTTGCAAAAAGCGTCCTT
 GAAATAGAGCGAGCTATCAAACAAACTCAGTGTCCAGCTGACCCATTACAGTTAAATAAGGCCCTTTCTA
 TTATTTTGCACCTAATTTGCTTGTAGAGAAAGTCTTGTACTCTAGAACAAGACCATTTCAAAAAGCA
 GACTATATACAGGTTTCTTAAGCTGCATCCAAGGGGAAAGAATAACTTCAGCCCTCTTACTCTGGCTGTG
 GACAAGAATACTACATGTGTAGGGCGGTACCCTGTTTGTAAATTTCCATCTCTACAAGTTACTGCAATAC
 TGATAGAATGTGGTGTGATGTGAACGTCAGAGACTCGGATGACAACAGTCCCCTGCATATCGTGTCTCT
 TAAACAACCATCCAGACATCATGAATCTCCTTATTAATCAGGTGCACATTTTATGCCACAAACTGCAC
 AAACAACCTGCTAGTGACTTGTGGATGAGAAGGAAATAGCTAAAAATTTAATCCAGCCTATAAATCATA
 CCACATTGCAGTGTCTTGTCTGCTGTCATAGTGAATCATAGAATATATTATAAAGGGCATATCCAGAG
 AAAGCTAGAGACTTTTGTTCCTTCATAGA

ACGCGTACGCGGCCGCTCGAGCAGAAACTCATCTCAGAAGAGGATCTGGCAGCAAATGATATCCTGGATT
 ACAAGGATGACGACGATAAGGTTTAA

Protein Sequence:

>RC205563 protein sequence
 Red=Cloning site Green=Tags(s)

MDLKTAVFNAARDGKLRLLTKLLASKSKEEVSSLISEKTNGATPLLMAARYGHLDMVEFLLEQCSASIEV
 GGSVNFDEGETIEGAPPLWAASAAGHLKVVQSLLNHGASVNNNTL TNSTPLRAACFDGHLIVKYLVEHKA
 DLEVSNRHGHTCLMISCYKGHKEIAQYLLEKGVNRKSVKGNALHDCAESGSLDIMKMLLMYCAKMEK
 DGYGMTPLL SASVTGHTNIVDFLTHHAQTSKTERINALELLGATFVDKRDLLGALKYWKAMNMRYSR
 TNII SKVPVQTLIMAYDYAKEVNSAELEGLIADPDEMRMQALLIRERILGPSHPDTSYYIRYRGAVYAD
 SGNFKRCINLWKYALDMQQSNLDPLSPMTASSLLSFAELFSFMLQDRAGLLGTTVTFFDLMGILCKSVL
 EIERAIKQTQCPADPLQLNKALSIILHLICLLEKVPCTLEQDHFQKQTIYRFLKLHPRGKNNFSPLHLAV
 DKNTTCVGRYPVCKFPSLQVTAIIECGADVNVRSDDNSPLHIAALNNHPDIMNLLIKSGAHFDATNLH
 KQTASDLLDEKEIAKNLIQPINHTTLQCLAARVIVNHRIYYKGIPEKLETFVSLHR

TRTRPLEQKLISEEDLAANDILDYKDDDDKV

Chromatograms: https://cdn.origene.com/chromatograms/mk6315_e01.zip

Restriction Sites: SgfI-MluI

Cloning Scheme:



ACCN: NM_020177

ORF Size: 1851 bp

OTI Disclaimer: The molecular sequence of this clone aligns with the gene accession number as a point of reference only. However, individual transcript sequences of the same gene can differ through naturally occurring variations (e.g. polymorphisms), each with its own valid existence. This clone is substantially in agreement with the reference, but a complete review of all prevailing variants is recommended prior to use. [More info](#)

OTI Annotation: This clone was engineered to express the complete ORF with an expression tag. Expression varies depending on the nature of the gene.

Components: The ORF clone is ion-exchange column purified and shipped in a 2D barcoded Matrix tube containing 10ug of transfection-ready, dried plasmid DNA (reconstitute with 100 ul of water).

Reconstitution Method:

1. Centrifuge at 5,000xg for 5min.
2. Carefully open the tube and add 100ul of sterile water to dissolve the DNA.
3. Close the tube and incubate for 10 minutes at room temperature.
4. Briefly vortex the tube and then do a quick spin (less than 5000xg) to concentrate the liquid at the bottom.
5. Store the suspended plasmid at -20°C. The DNA is stable for at least one year from date of shipping when stored at -20°C.

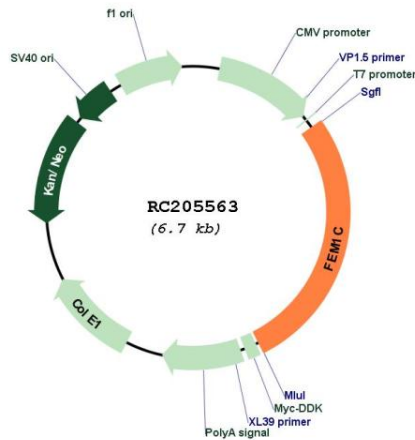
RefSeq: [NM_020177.3](#)

RefSeq Size: 5813 bp

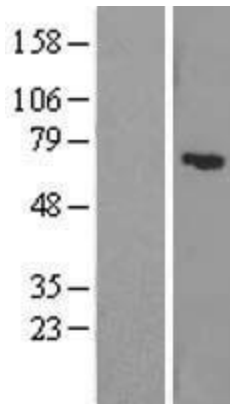
RefSeq ORF: 1854 bp

Locus ID: 56929
UniProt ID: [Q96JP0](#)
Cytogenetics: 5q22.3
Domains: ANK
MW: 68.7 kDa
Gene Summary: Probable component of an E3 ubiquitin-protein ligase complex, in which it may act as a substrate recognition subunit.[UniProtKB/Swiss-Prot Function]

Product images:



Circular map for RC205563



Western blot validation of overexpression lysate (Cat# [LY412600]) using anti-DDK antibody (Cat# [TA50011-100]). Left: Cell lysates from untransfected HEK293T cells; Right: Cell lysates from HEK293T cells transfected with RC205563 using transfection reagent MegaTran 2.0 (Cat# [TT210002]).