

## Product datasheet for RC205562

### LDHAL6B (NM\_033195) Human Tagged ORF Clone

#### Product data:

Product Type:	Expression Plasmids
Product Name:	LDHAL6B (NM_033195) Human Tagged ORF Clone
Tag:	Myc-DDK
Symbol:	LDHAL6B
Synonyms:	LDH6B; LDHAL6; LDHL
Mammalian Cell Selection:	Neomycin
Vector:	pCMV6-Entry (PS100001)
E. coli Selection:	Kanamycin (25 ug/mL)
ORF Nucleotide Sequence:	>RC205562 ORF sequence Red=Cloning site Blue=ORF Green=Tags(s)

TTTTGTAATACGACTCACTATAGGGCGCCGGGAATTCGTCGACTGGATCCGGTACCGAGGAGATCTGCC  
GCC**CGGATCGCC**

ATGAGTTGGACTGTGCCTGTTGTGCGGGCCAGCCAGAGAATGAGCTCGGTGGGAGCGAATTCCTATGCC  
TGGGGATGGCCCTGTGTCTGCGTCAAGCAACGCGCATCCCCTCAACGGCACCTGGCTCTTCACACCCGT  
GAGCAAGATGGCGACTGTGAAGAGTGAGCTTATTGAGCGTTTCACTTCCGAGAAGCCCGTTCATCACAGT  
AAGGTCTCCATCATAGGAACTGGATCGGTGGGCATGGCCTGCGCTATCAGCATCTTATTAAGGCTTGA  
GTGATGAACCTGGCCTTGTGGATCTTGATGAAGACAACTGAAGGGTGAGACGATGGATCTCAACATGG  
CAGCCCTTTCACGAAAATGCCAAATATTGTTTGTAGCAAAGATTACTTTGTCACAGCAAACCTCAACCTA  
GTGATTATCACAGCAGGTGCACGCCAAGAAAAGGAGAAAACGCGCCTTAATTTAGTCCAGCGAAATGTGG  
CCATCTTCAAGTTAATGATTTCCAGTATTGTCCAGTACAGCCCCACTGCAAACCTGATTATTGTTTCCAA  
TCCAGTGGATATCTTAACCTATGTAGCTTGAAGTTGAGTGCAATTTCCAAAAACCGTATTATTGGAAGC  
GGCTGTAATCTGGATACTGCTCGTTTTTCGTTTCTTGATTGGACAAAAGCTTGGTATCCATTCTGAAAGCT  
GCCATGGATGGATCCTCGGAGAGCATGGAGACTCAAGTGTTCCTGTGGAGTGGAGTGAACATAGCTGG  
TGTCCTTTGAAGGATCTGAACTCTGATATAGGAACTGATAAAGATCCTGAGCAATGGAAAAATGTCCAC  
AAAGAAGTGACTGCAACTGCCTATGAGATTATTAAGTAAAGGTTATACTTCTTGGCCATTGGCCTAT  
CTGTGGCCGATTTAACAGAAAGTATTTTGAAGAATCTTAGGAGAATACATCCAGTTTCCACCATAACTAA  
GGGCTCTATGGAATAGATGAAGAAGTATTCTCAGTATTCTTGTATCTGGGAGAGAACGGTATTACC  
AACCTTATAAAGATAAAGCTGACCCCTGAAGAAGAGGCCCATCTGAAAAAAGTGCAAAAACACTCTGG  
AAATTCAGAATAAGCTTAAGCTT

**ACGCGT**ACGCGGCCGCTCGAGCAGAACTCATCTCAGAAGAGGATCTGGCAGCAAATGATATCCTGGATT  
ACAAGGATGACGACGATAAGGTTTAA



[View online »](#)

**Protein Sequence:** >RC205562 protein sequence  
Red=Cloning site Green=Tags(s)

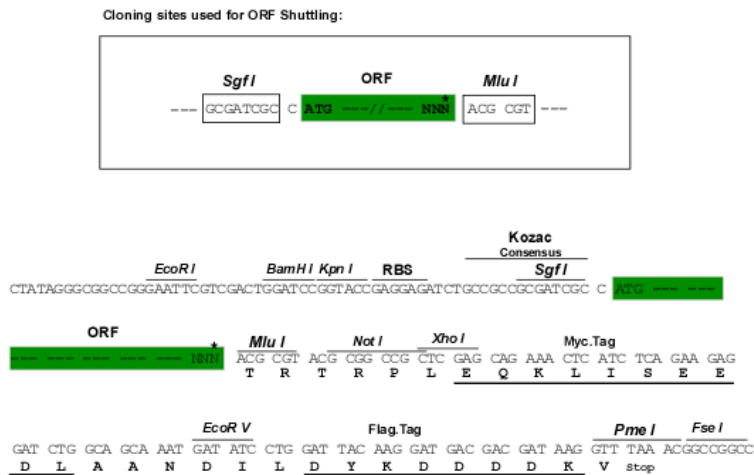
MSWTVPVVRSQRMSVSGANFLCLGMALCLRQATRIPLNGTWLFTVPVSKMATVKSELIERFTSEKPVVHS  
 KVSIIIGTGSVGMACAISILLKGLSDELALVDLDEDKLGKGETMDLQHGSPFTKMPNIVCSKDYFTANSNL  
 VIITAGARQEKGETRLNLVQRNVAIFKLMISSIVQYSPHCKLIIVSNPVDILTYVAWKL SAFPKNRIIGS  
 GCNLD TARFRFLIGQKLGHSCHGWILGEHGDSSVPVWVSGVNIAGVPLKDLNSDIGTDKDPEQWKNVH  
 KEVTATAYEIIKMKGYT SWAIGLSVADL TESILKNL RRIHPVSTITKGLY GIDEEVFLSIPCILGENGIT  
 NLIKIKLTP EEEAHLKSAKTLWEIQNKLKL

TRTRPLEQKLISEEDLAANDILDYKDDDDKV

**Chromatograms:** [https://cdn.origene.com/chromatograms/mk6315\\_a09.zip](https://cdn.origene.com/chromatograms/mk6315_a09.zip)

**Restriction Sites:** SgfI-MluI

**Cloning Scheme:**



\* The last codon before the Stop codon of the ORF

**ACCN:** NM\_033195

**ORF Size:** 1143 bp

**OTI Disclaimer:** The molecular sequence of this clone aligns with the gene accession number as a point of reference only. However, individual transcript sequences of the same gene can differ through naturally occurring variations (e.g. polymorphisms), each with its own valid existence. This clone is substantially in agreement with the reference, but a complete review of all prevailing variants is recommended prior to use. [More info](#)

**OTI Annotation:** This clone was engineered to express the complete ORF with an expression tag. Expression varies depending on the nature of the gene.

**Components:** The ORF clone is ion-exchange column purified and shipped in a 2D barcoded Matrix tube containing 10ug of transfection-ready, dried plasmid DNA (reconstitute with 100 ul of water).

**Reconstitution Method:**

1. Centrifuge at 5,000xg for 5min.
2. Carefully open the tube and add 100ul of sterile water to dissolve the DNA.
3. Close the tube and incubate for 10 minutes at room temperature.
4. Briefly vortex the tube and then do a quick spin (less than 5000xg) to concentrate the liquid at the bottom.
5. Store the suspended plasmid at -20°C. The DNA is stable for at least one year from date of shipping when stored at -20°C.

**RefSeq:** [NM\\_033195.3](#)

**RefSeq Size:** 1773 bp

**RefSeq ORF:** 1146 bp

**Locus ID:** 92483

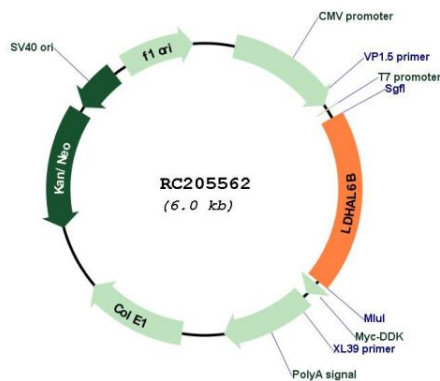
**UniProt ID:** [Q9BYZ2](#)

**Cytogenetics:** 15q22.2

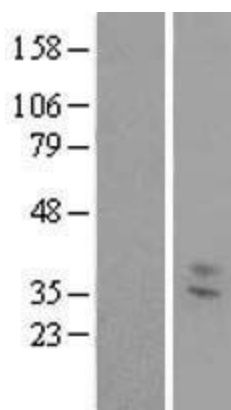
**Protein Pathways:** Cysteine and methionine metabolism, Glycolysis / Gluconeogenesis, Metabolic pathways, Propanoate metabolism, Pyruvate metabolism

**MW:** 42 kDa

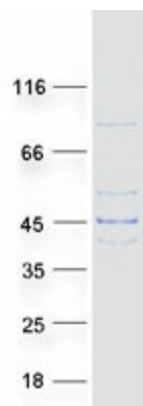
**Product images:**



Circular map for RC205562



Western blot validation of overexpression lysate (Cat# [LY409673]) using anti-DDK antibody (Cat# [TA50011-100]). Left: Cell lysates from untransfected HEK293T cells; Right: Cell lysates from HEK293T cells transfected with RC205562 using transfection reagent MegaTran 2.0 (Cat# [TT210002]).



Coomassie blue staining of purified LDHAL6B protein (Cat# [TP305562]). The protein was produced from HEK293T cells transfected with LDHAL6B cDNA clone (Cat# RC205562) using MegaTran 2.0 (Cat# [TT210002]).