

## Product datasheet for **RC205560**

### USP44 (NM\_032147) Human Tagged ORF Clone

#### Product data:

Product Type:	Expression Plasmids
Product Name:	USP44 (NM_032147) Human Tagged ORF Clone
Tag:	Myc-DDK
Symbol:	USP44
Mammalian Cell Selection:	Neomycin
Vector:	pCMV6-Entry (PS100001)
E. coli Selection:	Kanamycin (25 ug/mL)



[View online »](#)

**ORF Nucleotide  
Sequence:**

>RC205560 ORF sequence  
 Red=Cloning site Blue=ORF Green=Tags(s)

TTTTGTAATACGACTCACTATAGGGCGGCCGGGAATTCGTGACTGGATCCGGTACCGAGGAGATCTGCC  
 GCC**GCGATCGCC**

ATGCTAGCAATGGATACGTGCAAAACATGTTGGGCAGCTGCAGCTTGTCTAAGACCATTCCAGCCTCAACC  
 CTCAGAAATGGCACTGTGTGGACTGCAACACGACCGAGTCCATTTGGGCTTGCCTTAGCTGCTCCCATGT  
 TGCTGTGGAAGATATATTGAAGAGCATGCACTCAAGCACTTTCAAGAAAAGCAGTCATCCTGTTGCATTG  
 GAGGTGAATGAGATGTACGTTTTTTGTTACCTTTGTGATGATTATGTTCTGAATGATAACGCAACTGGAG  
 ACCTGAAGTTACTACGACGTACATTAAGTGCCATCAAAGTCAAATATCACTGCACAACCTCGTAGTGG  
 GAGGTTTTTACGGTCCATGGGTACAGGTGATGATTCTTATTTCTTACATGACGGTGCCCAATCTCTGCTT  
 CAAAGTGAAGATCAACTGTATACTGCTCTTTGGCACAGGAGAAGGATACTAATGGGTAATCTTTTCGAA  
 CATGGTTTGAACAATCACCCATTGGAAGAAAAAGCAAGAAGAACCATTTTCAGGAAAAATAGTAGTAAA  
 AAGAGAAGTAAAGAAAAGACGGCAGGAATTGGAGTATCAAGTTAAAGCAGAATTGGAAAGTATGCCTCCA  
 AGAAAGAGTTTACGTTTACAAGGCTCGCTCAGTCGACCATAATAGAAATAGTTTCTGTTGAGGTGCCAG  
 CACAAACGCCAGCATCACAGCAAAAGATAAAGTACTCTCTACCTCAGAAATGAAATATCTCAAAAAGT  
 CAGTGACTCCTCAGTTAAACGAAGGCCAATAGTAACTCCTGGTGTAAACAGGATTGAGAAATTTGGGAAAT  
 ACTTGCTATATGAATCTGTTCTTCAGGTATTGAGTCACTTACTTATTTTTCGACAATGTTTTTAAAGC  
 TTGATCTGAACCAATGGCTGGCTATGACTGCTAGCGAGAAGACAAGATCTTGAAGCATCCACCAGTCAC  
 AGATACAGTAGTATACAAATGAATGAATGTGAGGAAAAAGATACAGGTTTTGTTGCTCCAGACAATCA  
 AGTCTGTATCAGGACTAAGTGGTGGAGCATCAAAGGTAGAAAGATGAACTTATTCAGCCAAAGGAGC  
 CAACCTCACAGTACATTTCTTTGTCATGAATTGCATACTTTGTTCCAAGTCATGTGGTGGAAAGTG  
 GCGGTTGGTCTCACCATTTGCTATGCTACACTCAGTGTGGAGACTCATTCTGCCTTTCTGTTGTTACGCC  
 CAACAAGACGCTCAGGAATTTCTTTGTGAACCTTTAGATAAAAATACAACGTGAATTAGAGACAACCTGGTA  
 CCAGTTTACCAGCTCTTATCCCCACTTCTCAAAGGAAACTCATCAAAACAAGTTCTGAATGTTGTAATAA  
 CATTTTTCATGGACAACCTCTTAGTCAGGTTACATGTCTTGATGTGACAACAAATCAAATACCATAGAA  
 CCTTTCTGGGACTTGTCAATGGAGTTCCAGAAAGGTATCAATGCAGTGGAAAAGATATTGCTTCCAGC  
 CATGTCTGGTTACTGAAATGTTGGCCAAATTTACAGAACTGAAGCTTTAGAAGGAAAAATCTACGTATG  
 TGACCAGTGAACCTCAAAGCGTAGAAGGTTTTCTCCAAACCAGTTGACTCACAGAAGCCAGAAACAA  
 CTTATGATATGCCACCTACCTCAGGTTCTCAGACTGCACCTCAAACGATTGAGTGGTCCAGGACGTAATA  
 ACCGAGAGAAGATTGGTGTTCATGTTGGCTTTGAGGAAATCTTAAACATGGAGCCCTATTGCTGCAGGGA  
 GACCCTGAAATCCCTCAGACCAGAATGCTTTATCTATGACTTGTCCGCGGTGGTGTGCACCATGGGAAA  
 GGATTTGGCTCAGGGCACTACACTGCCTACTGCTATAATTCTGAAGGAGGGTTCTGGGTACACTGCAATG  
 ATTCAAACTAAGCATGTGCACTATGGACGAAGTATGCAAGGCTCAAGCTTATATCTTGTGTTTATACCCA  
 ACGAGTACTGAGAAATGGACATTCTAAACTTTGCTCCAGAGCTCCTGTTGGGGAGCCAACATCCCAAT  
 GAAGACGCTGATACCTCGTCTAATGAAATCCTTAGC

**ACGCGT**ACGCGGCCGCTCGAGCAGAAACTCATCTCAGAAGAGGATCTGGCAGCAAATGATATCCTGGATT  
 ACAAGGATGACGACGATAAGGTTTAA

**Protein Sequence:** >RC205560 protein sequence  
 Red=Cloning site Green=Tags(s)

MLAMDTCKHVGQLQLAQDHSSLNPQKWHVCVDCNTTESIWACLSCSHVACGRYIEEHALKHFQESSHPVAL  
 EVNEMYVFCYLDDYVLNDNATGDLKLLRRTL SAIKSONYHCTTRSGRFLRSMGTGDDSYFLHDGAQSL  
 QSEDQLYALWHRRRILMGKIFRTWFEQSPIGRKKQEEPFQEKIVVKREVKKRRQLEYQVKAELSMPP  
 RKSLRLQGLAQSTIIIEIVSVQVPAQTPASPAKDKVLSTSENEISQKVSDDSSVKRRPIVTPGVTGLRNLGN  
 TCYMNSVLQVLSHLLIFRQCFLKLDLNQWLAMTASEKTRSCKHPPVTDTVVYQMNECQEKDTGFVCSRQS  
 SLSSGLSGGASKGRKMELIQPKEPTSQYISLCHLHTLFQVMWSGKVALVSPFAMLHSVWRLIPAFRGYA  
 QQDAQEFLCELLDKIQRELETTGTSPLALIPTSQRKLIKQVLNVVNNIFHGQLLSQVTCLACDNKSNTIE  
 PFWDLSEFFPERYQCSGKDIASQPCLVTEMLAKFTETEALGKIYVCDQCNSKRRRFSKPVVLTEAQKQ  
 LMIChLPQVRLHLKRFRWGRNNREKIGVHVGFEEILNMEPYCCRETLKSLRPECFIYDLSAVVMHHGK  
 GFGSGHYTAYCYNSEGGFWVHCNDSKLSMCTMDEVCKAQAYILFYTORVTENGHSLKLLPELLLLGSQHPN  
 EDADTSSNEILS

TRTRPLEQKLISEEDLAANDILDYKDDDDKV

**Chromatograms:** [https://cdn.origene.com/chromatograms/mk6314\\_g02.zip](https://cdn.origene.com/chromatograms/mk6314_g02.zip)

**Restriction Sites:** Sgfl-MluI

**Cloning Scheme:**

Cloning sites used for ORF Shuttling:



\* The last codon before the Stop codon of the ORF

**ACCN:** NM\_032147

**ORF Size:** 2136 bp

**OTI Disclaimer:** Due to the inherent nature of this plasmid, standard methods to replicate additional amounts of DNA in E. coli are highly likely to result in mutations and/or rearrangements. Therefore, OriGene does not guarantee the capability to replicate this plasmid DNA. Additional amounts of DNA can be purchased from OriGene with batch-specific, full-sequence verification at a reduced cost. Please contact our customer care team at [custsupport@origene.com](mailto:custsupport@origene.com) or by calling 301.340.3188 option 3 for pricing and delivery.

The molecular sequence of this clone aligns with the gene accession number as a point of reference only. However, individual transcript sequences of the same gene can differ through naturally occurring variations (e.g. polymorphisms), each with its own valid existence. This clone is substantially in agreement with the reference, but a complete review of all prevailing variants is recommended prior to use. [More info](#)

**OTI Annotation:** This clone was engineered to express the complete ORF with an expression tag. Expression varies depending on the nature of the gene.

**Components:** The ORF clone is ion-exchange column purified and shipped in a 2D barcoded Matrix tube containing 10ug of transfection-ready, dried plasmid DNA (reconstitute with 100 ul of water).

**Reconstitution Method:**

1. Centrifuge at 5,000xg for 5min.
2. Carefully open the tube and add 100ul of sterile water to dissolve the DNA.
3. Close the tube and incubate for 10 minutes at room temperature.
4. Briefly vortex the tube and then do a quick spin (less than 5000xg) to concentrate the liquid at the bottom.
5. Store the suspended plasmid at -20°C. The DNA is stable for at least one year from date of shipping when stored at -20°C.

**RefSeq:** [NM\\_032147.5](#)

**RefSeq Size:** 4035 bp

**RefSeq ORF:** 2139 bp

**Locus ID:** 84101

**UniProt ID:** [Q9H0E7](#)

**Cytogenetics:** 12q22

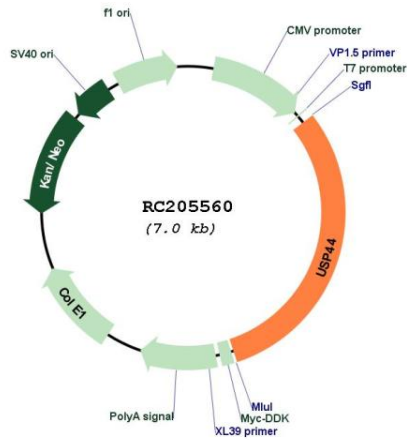
**Domains:** UCH, zf-UBP

**Protein Families:** Druggable Genome, Protease

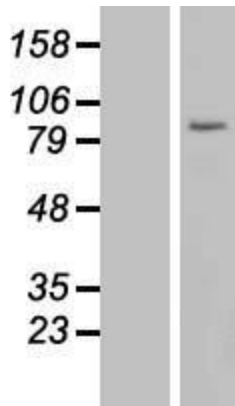
**MW:** 81.2 kDa

**Gene Summary:** The protein encoded by this gene is a protease that functions as a deubiquitinating enzyme. The encoded protein is thought to help regulate the spindle assembly checkpoint by preventing early anaphase onset. This protein specifically deubiquitinates CDC20, which stabilizes the anaphase promoting complex/cyclosome. [provided by RefSeq, Dec 2016]

Product images:



Circular map for RC205560



Western blot validation of overexpression lysate (Cat# [LY410340]) using anti-DDK antibody (Cat# [TA50011-100]). Left: Cell lysates from untransfected HEK293T cells; Right: Cell lysates from HEK293T cells transfected with RC205560 using transfection reagent MegaTran 2.0 (Cat# [TT210002]).