

Product datasheet for **RC205559**

KBTBD7 (NM_032138) Human Tagged ORF Clone

Product data:

Product Type:	Expression Plasmids
Product Name:	KBTBD7 (NM_032138) Human Tagged ORF Clone
Tag:	Myc-DDK
Symbol:	KBTBD7
Mammalian Cell Selection:	Neomycin
Vector:	pCMV6-Entry (PS100001)
E. coli Selection:	Kanamycin (25 ug/mL)



[View online »](#)

ORF Nucleotide
Sequence:

>RC205559 ORF sequence
Red=Cloning site Blue=ORF Green=Tags(s)

TTTTGTAATACGACTCACTATAGGGCGGCCGGGAATTCGTCGACTGGATCCGGTACCGAGGAGATCTGCC
GCCGCGATCGCC

ATGCAGTCCCGGGAAGACGTCCCGCCTCTCGCCGCTCGCCAGTCCCCGTGGTGGGAGGCGGCCAAGA
GGATTTCCAAGCCCTCGGTTTCGGCCTTTTTCACGGGTCCAGAGGAGTTAAAGGACACGGCCATTCTGC
AGCCCTGCTGGCACAGCTCAAGTCTTCTACGACGCGCGGCTGCTGTGTGATGTGACCATCGAGGTGGTG
ACGCTGGCAGCGGGCCTGGCACGGGTGCGCTCTTTTCTGCAATCGCAACGTGCTAGCAGCTGCGTGTG
CCTACTTCAAGAGCATGTTACAGGTGGCATGTACGAGAGCCAGCAGGCCAGCGTGACCATGCACGATGT
GGACGCCGAGTCTTCGAGGTGTTGGTCGACTACTGCTACACGGGTGCTGTGTCTCTCAGTGAGGCCAAT
GTGCAGCGCCTGTACGCGGCCTCCGACATGCTACAGCTGGAATATGTGCGGGAAGCCTGTGCTCCTTCT
TAGCCCGACGTCTTGACCTGACCAACTGCACCGCCATCCTCAAGTTTGCAGACGCCTTCGACCATCACAA
GCTTCGATCTCAGGCCAGTCTACATAGCTCACAACCTCAAGCAGCTCAGCCGAATGGGTTCAATTCCGG
GAGGAGACTCTAGCAGATCTAACCTGGCCAGCTGCTGGCTGTCTACGCCTGGATAGTCTGGACATAG
AGAGTGAGCGGACTGTATGCCATGTAGCTGTGCAGTGGCTGGAGGCTGCTGCCAAAGAGCGGGTCCAG
TGCTGCAGAAGTCTTCAAGTGCCTGCGCTGGATGCACTTCACTGAAGAAGATCAGGACTACTTAGAAGGG
CTGCTGACCAAGCCCATCGTGAAGAAGTACTGCCTGGACGTTATTGAAGGGGCCCTGCAGATGCGCTATG
GTGACCTGTTGTACAAGTCTCTGGTGCCAGTGCCAAACAGCAGCAGCAGCAGTAGCAGCAGCAACTCTCT
TGATCTGCAGCAGAAAAATCCACCCAGAGACTGGGTATGTGTGCCAAGGAGATGGTGATCTTCTTTGGA
CATCCTAGAGATCCCTTCTCTGCTATGACCCTTACTCGGGGGACATTTACAAATGCCATCCCTTTTGA
CCAGCTTTGCTCACACTAAGACTGTCACCTCCTCAGCTGTCTGTGTGTCCTCCAGACCATGACATCTATCT
AGCTGCTCAGCCAGGAAAGACCTCTGGGTGTATAAACCAGCTCAGAATAGTTGGCAGCAACTTGCAGAT
CGCTTGCTGTGCTGAGGGCATGGATGTGGCATATCTCAATGGCTACATCTACATTTTGGGGGACGAG
ACCCTATTACTGGAGTTAAGTTGAAGGAAGTGAATGCTACAGTGTTCAGAGAAACCAGTGGGCATTGGT
GGCTCCTGTCCCTCATTCTTCTATTCTTTGAACTCATAGTGGTTCAGAACTATCTTTATGCTGTCAAC
AGTAAGCGCATGCTTTGCTATGATCCTAGCCACAATATGTGGCTGAACTGTGCTTCTTTAAACGTAGTG
ACTTTCAGGAAGCATGTGCTTCAATGATGAAATCTATTGTATCTGTGACATCCCAGTCTGAAGGTCTA
CAACCCAGCTAGGGGAGAATGGAGGCGGATTAGTAATATTCCTTTGGATTCAGAGACCCACAACCTACCAG
ATTGTCAATCATGACAAAAGTTGCTTCTCATCACTTCTACAACCCACAATGGAAAAAGAACCGAGTGA
CAGTGTATGAGTATGATACTAGGGAAGATCAGTGGATTAAATATAGGTACCATGTTAGGCCTTTTGCAGTT
TGACTCTGGCTTTATTTGCCTTTGTGCTCGTGTATCCTTCTGCCTTGAACCTGGTCAGAGTTTTATT
ACTGAGGAAGATGATGCACGGAGTGAGTCTAGTACTGAATGGGACTTAGATGGATTAGTGTGAGTGGACT
CTGAGTCAAGGATTCAGTTCTTTTTCAGATGATGAAGTCTGGGTGCAAGTAGCACCTCAGCGAAATGC
ACAGGATCAGCAGGGTCTTTG

ACGCGTACGCGGCCGCTCGAGCAGAACTCATCTCAGAAGAGGATCTGGCAGCAATGATATCCTGGATT
ACAAGGATGACGACGATAAGGTTTAA

Protein Sequence: >RC205559 protein sequence
Red=Cloning site Green=Tags(s)

MQSREDVPRSRRLASPRGRRPKRISKPSVSAFFTGPPEELKDTAHSALLAQLKSFYDARLLCDVTIEV
 TPGSGPGTGRLFSCNRNVLAAACPYFKSMFTGGMYESQQASVTMHDVDAESFEVLVDYCYTGRVSLSEAN
 VQRLYAASDMLQLEYVREACASFLARRLDLTNCTAILKFADAFDHHKLSQAQSYIAHNFKQLSRMGSIR
 EETLADLTLAQLLAVLRDLSLDIESERTVCHVAVQWLEAAAKERGPSAAEVFKCVRWMHFTEEDQDYLEG
 LLTKPIVKKYCLDVEGALQMRYGDLLYKSLVPVPNSSSSSSSSNSLVSAAENPPQRLGMCAKEMVIFFG
 HPRDPFLCYDPYSGDIYTMPSPITSFAHTKTVTSSAVCVSPDHDIYLAAPRKDLWVYKPAQNSWQQLAD
 RLLCREGMDVAYLNGYIYLGGRPITGVKLKEVECYSVQRNQWALVAPVPHSFYFELIVVQNYLYAVN
 SKRMLCYDP SHMMLNCASLKRSDFQEACVFNDEIYCICDIPVMKYVNPARGEWRRISNIPLDSETHNYQ
 IVNHDQKLLLITSTTPQWKKNRVTVYEYDTREDQWINIGTMLGLLQFDSGFIICLCARVYPSCLEPGQSF
 TEEDDARSESSTEWDLDGFSELDSESGSSSSFSDDEVVWQVAPQRNAQDQQGS

TRTRPLEQKLISEEDLANDILDYKDDDDKV

Chromatograms: https://cdn.origene.com/chromatograms/mk6315_c04.zip

Restriction Sites: SgfI-MluI

Cloning Scheme:



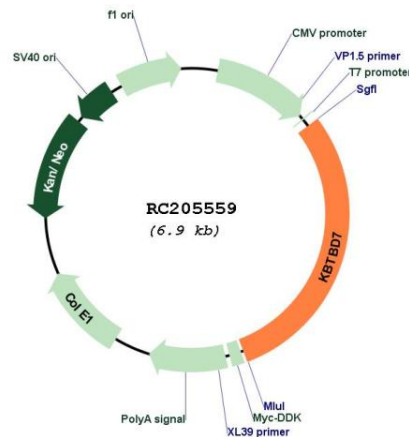
ACCN: NM_032138

ORF Size: 2052 bp

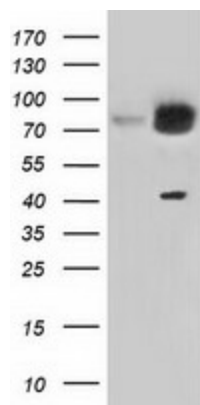
OTI Disclaimer: The molecular sequence of this clone aligns with the gene accession number as a point of reference only. However, individual transcript sequences of the same gene can differ through naturally occurring variations (e.g. polymorphisms), each with its own valid existence. This clone is substantially in agreement with the reference, but a complete review of all prevailing variants is recommended prior to use. [More info](#)

OTI Annotation: This clone was engineered to express the complete ORF with an expression tag. Expression varies depending on the nature of the gene.

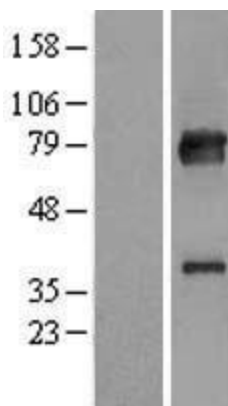
Components:	The ORF clone is ion-exchange column purified and shipped in a 2D barcoded Matrix tube containing 10ug of transfection-ready, dried plasmid DNA (reconstitute with 100 ul of water).
Reconstitution Method:	<ol style="list-style-type: none"> 1. Centrifuge at 5,000xg for 5min. 2. Carefully open the tube and add 100ul of sterile water to dissolve the DNA. 3. Close the tube and incubate for 10 minutes at room temperature. 4. Briefly vortex the tube and then do a quick spin (less than 5000xg) to concentrate the liquid at the bottom. 5. Store the suspended plasmid at -20°C. The DNA is stable for at least one year from date of shipping when stored at -20°C.
RefSeq:	<u>NM_032138.7</u>
RefSeq Size:	3008 bp
RefSeq ORF:	2055 bp
Locus ID:	84078
UniProt ID:	<u>Q8WVZ9</u>
Cytogenetics:	13q14.11
Domains:	BTB, Kelch
MW:	77.2 kDa
Gene Summary:	The protein encoded by this gene is a transcriptional activator, having been shown to increase the transcription of activator protein-1 and serum response element. The encoded protein can also form a complex with KBTBD6 and CUL3, which regulates the ubiquitylation and degradation of TIAM1, which is a regulator of RAC1. [provided by RefSeq, Jul 2016]

Product images:


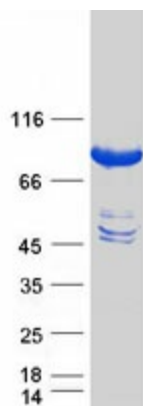
Circular map for RC205559



HEK293T cells were transfected with the pCMV6-ENTRY control (Cat# [PS100001], Left lane) or pCMV6-ENTRY KBTBD7 (Cat# RC205559, Right lane) cDNA for 48 hrs and lysed. Equivalent amounts of cell lysates (5 ug per lane) were separated by SDS-PAGE and immunoblotted with anti-KBTBD7(Cat# [TA501391]). Positive lysates [LY410331] (100ug) and [LC410331] (20ug) can be purchased separately from OriGene.



Western blot validation of overexpression lysate (Cat# [LY410331]) using anti-DDK antibody (Cat# [TA50011-100]). Left: Cell lysates from untransfected HEK293T cells; Right: Cell lysates from HEK293T cells transfected with RC205559 using transfection reagent MegaTran 2.0 (Cat# [TT210002]).



Coomassie blue staining of purified KBTBD7 protein (Cat# [TP305559]). The protein was produced from HEK293T cells transfected with KBTBD7 cDNA clone (Cat# RC205559) using MegaTran 2.0 (Cat# [TT210002]).