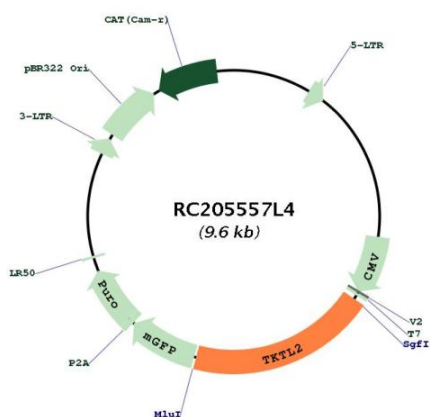


OTI Disclaimer:	The molecular sequence of this clone aligns with the gene accession number as a point of reference only. However, individual transcript sequences of the same gene can differ through naturally occurring variations (e.g. polymorphisms), each with its own valid existence. This clone is substantially in agreement with the reference, but a complete review of all prevailing variants is recommended prior to use. More info
OTI Annotation:	This clone was engineered to express the complete ORF with an expression tag. Expression varies depending on the nature of the gene.
Components:	The ORF clone is ion-exchange column purified and shipped in a 2D barcoded Matrix tube containing 10ug of transfection-ready, dried plasmid DNA (reconstitute with 100 ul of water).
Reconstitution Method:	<ol style="list-style-type: none">1. Centrifuge at 5,000xg for 5min.2. Carefully open the tube and add 100ul of sterile water to dissolve the DNA.3. Close the tube and incubate for 10 minutes at room temperature.4. Briefly vortex the tube and then do a quick spin (less than 5000xg) to concentrate the liquid at the bottom.5. Store the suspended plasmid at -20°C. The DNA is stable for at least one year from date of shipping when stored at -20°C.
RefSeq:	NM_032136.3 , NP_115512.2
RefSeq Size:	2837 bp
RefSeq ORF:	1881 bp
Locus ID:	84076
UniProt ID:	Q9H0I9
Cytogenetics:	4q32.2
Protein Pathways:	Metabolic pathways, Pentose phosphate pathway
MW:	67.9 kDa
Gene Summary:	Plays an essential role in total transketolase activity and cell proliferation in cancer cells; after transfection with anti-TKTL1 siRNA, total transketolase activity dramatically decreases and proliferation was significantly inhibited in cancer cells. Plays a pivotal role in carcinogenesis. [UniProtKB/Swiss-Prot Function]

Product images:



Circular map for RC205557L4