

Product datasheet for **RC205556**

Calicin (CCIN) (NM_005893) Human Tagged ORF Clone

Product data:

Product Type:	Expression Plasmids
Product Name:	Calicin (CCIN) (NM_005893) Human Tagged ORF Clone
Tag:	Myc-DDK
Symbol:	Calicin
Synonyms:	BTBD20; KBTBD14
Mammalian Cell Selection:	Neomycin
Vector:	pCMV6-Entry (PS100001)
E. coli Selection:	Kanamycin (25 ug/mL)



[View online »](#)

ORF Nucleotide Sequence:

>RC205556 ORF sequence
 Red=Cloning site Blue=ORF Green=Tags(s)

TTTTGTAATACGACTCACTATAGGGCGGCCGGAATTCGTCGACTGGATCCGGTACCGAGGAGATCTGCC
 GCC**CGGATCGCC**

ATGAAATTGGAATTCACGGAGAAAACTACAATAGCTTCGTGCTGCAGAACCTGAACAGACAGAGGAAAC
 GCAAAGAGTACTGGGACATGGCCCTGAGCGTGGACAACACCGTCTTCTTTGCACATCGCAATGTGCTGGC
 TGCTGTCTCCCCACTGGTGGAGCCTCATCTCCAGCAATGACATGAAGACCGCTGATGAGCTTTTCATC
 ACCATTGACACCAGTTACCTGAGCCCGGTACAGTGGACCAGCTTCTGGACTACTTCTATAGCGGAAGG
 TGGTGATCTCCGAGCAAATGTGGAGGAGCTGCTCGTGGGGCTCAGTATTTCAACACACCACGCCTTCG
 AGTTCACTGTAACGACTTCCTTATTAAGTCCATCTGCCGTGCCAACTGCTTGGCTACCTCTTTGGCT
 GAGCTGTTTGAGCTCAAAGAGGTATCAGACGTAGCTTACTCTGGCATTCCGGACAACCTCCACTACTGGG
 CCAGTCTGAGGGCTCCATGCATTCATCGCTGTCCACCTGTTATCTTTGGCCGCTGCTCCGTGATGA
 AAACCTTCACGTGCTCAATGAAGACCAGGCGCTCAGCGCACTCATCAATGGGTGTACTCCGGAAGGAG
 GATCGGGAGAAGTATTTCAAAGATTCTCAATTACATCAATCTCAATGCTGCTCCAATAAGACGCTGG
 TGTTCGACGAACAAGCTGGTGGGCATGGAGAACACCTCATCCATACAAACCTGATTGAGAGTGTCTT
 GATGGACCGAAGCAGGAGCGGCCATGCAGCCTGCTGGTCTACCAGCGAAAGGGGCCCTGCTTGATTCC
 GTGGTCATCCTCGGTGGCCAGAAGGCCACGGCCAGTTCAATGATGGAGTGTTCCTTATATCATCCAGG
 AGAACCTGTGGATGGAGCTCTCAGACATGCCCTATCGGGCAGCAGCACTTAGTGCCACCTCTGCTGGTGC
 CTACATCTACATCTCTGGTGGCACCCTGAGCAGATTTCAAGGCTGAAGACAGCCTGGCGGTATGACATG
 GATGACAACTCCTGGACCAAGTTGCCTGACCTGCCATCGGGCTGTCTCCACACCATGTTGACCTGTG
 GGGGAACAGTGTACTCAGTGGGCGGGACATTGCCCAAGGCGGTATGTCTCCAACATCTATCGCTATGA
 TGAGCGGAAGGAAGTCTGGTGCCTGGCAGGAAAGATGAGCATCCCATGGATGGACCGCGGTGATCACT
 AAAGGAGACAGGCATCTGTACATTGTCACTGGACGGTGTGGTGAAGGTTATATCTCCCGGGTGGGG
 TAGTGGACTGCTTTGACACCAGCACTGGGGACGTGGTCCAGTGTATCACCTTCCCCATTGAGTTCAACCA
 TCGGCCCTGCTCTTTTCCAACAGGACAACATCCTCTGCGTGCACAGCCACCGGAGAGTGTGGAAATC
 AATCTGCAGAAGGTGAAGGCAAGCAAGACGACCACCTCAGTGCCTGTCTTGCCCAACAGCTGCCCTTGG
 ATGTGTCCATGTATATGCTCCATTGGAGACAGCAAGGTGTTTGTATGTGGGGTGTACCACCTGCCAG
 CGATGTCCAGACAAAGGACTACACCATCAATCCAATGCCTTCTTGTGGACAAAAGACAGGCAAGTGG
 AAGACCCTGGCTCTCCACCAGAGGCACCTGGACTGTCTGCTGCTGTCTAGCCAAGCTACCTTGAAGA
 TTCTTCAAAGGATT

ACGCGTACGCGGCCGCTCGAGCAGAAACTCATCTCAGAAGAGGATCTGGCAGCAAATGATATCCTGGATT
 ACAAGGATGACGACGATAAGGTTTAA

Protein Sequence:

>RC205556 protein sequence
 Red=Cloning site Green=Tags(s)

MKLEFTEKNYNSFVLQNLNRQRKRKEYWDMALSVDNHVFFAHRNVLAAVSPLVRSLISSNDMKTADELFI
 TIDTSYLSPTVDQLLDYFYSKVVVISEQNVEELLRGAQYFNTPLRVHCNDFLIKSIKRANCLRYLFLA
 ELFELKEVSDVAYSGIRDNFHYWASPEGSMHFMRCPPVIFGRLLRDNHLVHNEDQAL SALINWVYFRKE
 DREKYFKFFNYINLNAVSNKTLVFASNKLVGMENTSSHTTLESVLMRQERPCSLLVYQRKGALLDS
 VVILGGQKAHQFNDGVFAYIIQENLWME LSDMPYRAAAL SATSAGRYIYISGGTTEQISGLKTAWRYDM
 DDNSWTKLPDLPIGLVFHTMVTCCGTVYSVGGSIAPRRYVSNIRYDERKEVWCLAGKMSIPMDGTAVIT
 KGDRHLYIVTGRCLVKGYISRVGVVDFDSTGDDVVCITFPIEFNHRPLLSFQQDNLVHSHRQSVET
 NLQKVKASKTTTTVPVLPNSCPLDVSHAICSIGDSKVFVCGGVTTASDVQTKDYINPN AFLLDQKTGKW
 KTLAPPEALDCPACCLAKLPCKILQRI

TRTRPLEQKLISEEDLAANDILDYKDDDDKV

Chromatograms:

https://cdn.origene.com/chromatograms/mk6536_f08.zip

Restriction Sites: SgfI-MluI

Cloning Scheme:



ACCN: NM_005893

ORF Size: 1764 bp

OTI Disclaimer: The molecular sequence of this clone aligns with the gene accession number as a point of reference only. However, individual transcript sequences of the same gene can differ through naturally occurring variations (e.g. polymorphisms), each with its own valid existence. This clone is substantially in agreement with the reference, but a complete review of all prevailing variants is recommended prior to use. [More info](#)

OTI Annotation: This clone was engineered to express the complete ORF with an expression tag. Expression varies depending on the nature of the gene.

Components: The ORF clone is ion-exchange column purified and shipped in a 2D barcoded Matrix tube containing 10ug of transfection-ready, dried plasmid DNA (reconstitute with 100 ul of water).

- Reconstitution Method:**
1. Centrifuge at 5,000xg for 5min.
 2. Carefully open the tube and add 100ul of sterile water to dissolve the DNA.
 3. Close the tube and incubate for 10 minutes at room temperature.
 4. Briefly vortex the tube and then do a quick spin (less than 5000xg) to concentrate the liquid at the bottom.
 5. Store the suspended plasmid at -20°C. The DNA is stable for at least one year from date of shipping when stored at -20°C.

RefSeq: [NM_005893.3](#)

RefSeq Size: 1956 bp

RefSeq ORF: 1767 bp

Locus ID: 881

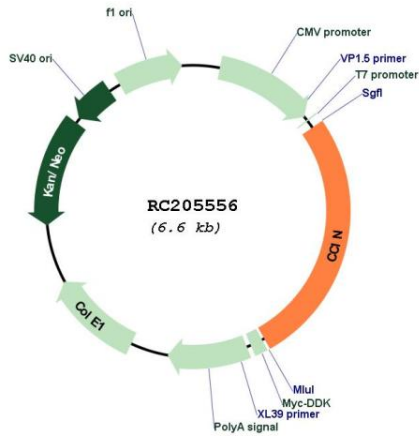
UniProt ID: [Q13939](#)

Cytogenetics: 9p13.3

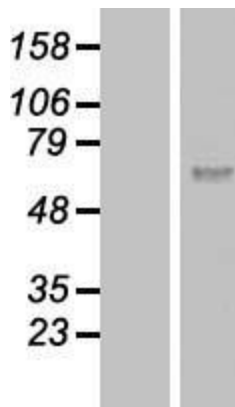
MW: 66.6 kDa

Gene Summary: The protein encoded by this gene is a basic protein of the sperm head cytoskeleton. This protein contains kelch repeats and a BTB/POZ domain and is necessary for normal morphology during sperm differentiation. This gene is intronless. [provided by RefSeq, Jul 2008]

Product images:



Circular map for RC205556



Western blot validation of overexpression lysate (Cat# [LY417008]) using anti-DDK antibody (Cat# [TA50011-100]). Left: Cell lysates from untransfected HEK293T cells; Right: Cell lysates from HEK293T cells transfected with RC205556 using transfection reagent MegaTran 2.0 (Cat# [TT210002]).