

## Product datasheet for **RC205555**

### IZUMO4 (NM\_001031735) Human Tagged ORF Clone

#### Product data:

Product Type:	Expression Plasmids
Product Name:	IZUMO4 (NM_001031735) Human Tagged ORF Clone
Tag:	Myc-DDK
Symbol:	IZUMO4
Synonyms:	C19orf36; IMAGE:4215339
Mammalian Cell Selection:	Neomycin
Vector:	pCMV6-Entry (PS100001)
E. coli Selection:	Kanamycin (25 ug/mL)
ORF Nucleotide Sequence:	>RC205555 ORF sequence Red=Cloning site Blue=ORF Green=Tags(s)

TTTTGTAATACGACTCACTATAGGGCGGCCGGAATTCGTCGACTGGATCCGGTACCGAGGAGATCTGCC  
GCC**CGATCGCC**

ATGACCCTGCTGCTGTGCCTGGTGTGCCTGACGGCGGCGCTGGCCACGGCTGTCTGCACTGCCACAGCA  
ACTTCTCCAAGAAGTTCTCCTTACC GCCACCATGTGAACCTCAAGTCTGGTGGGTGGGCGACATCCC  
CGTGT CAGGGGCGCTGCTCACC GACTGGAGCGACGACACGATGAAGGAGCTGCACCTGGCCATCCCCGCC  
AAGATCACCCGGGAGAAGCTGGACCAAGTGGCGACAGCAGTGTACCAGATGATGGATCAGCTGTACCAGG  
GGAAGATGTA CTCCCCGGTATTTCCCAACGAGCTGCGAAACATCTTCCGGGAGCAGGTGCACCTCAT  
CCAGAACGCCATCATCGAAAGCCGATCGACTGT CAGCACCGCTGTGGCATCTTCCAGTACGAGACCATC  
TCCTGCAACA ACTGCACAGACTCGACGTCGCCTGCTTTGGCTATAACTGCGAGTCTCGGCCAGTGGA  
AGTCAGCTGTCCAGGGCCTCCTGAACTACATAAATAACTGGCACAAACAGGACACGAGCATGAGCCTGGT  
ATCGCCAGCCTTAAGGTGTCTGGAGCCCCACACTTGGCCAACCTGACCTTGAAGATGCTGCTGAGTGT  
CTCAAGCAGCAC

**ACGCGT**ACGCGGGCGCTCGAGCAGAACTCATCTCAGAAGAGGATCTGGCAGCAAATGATATCCTGGATT  
ACAAGGATGACGACGATAAGGTTTAA



[View online »](#)

**Protein Sequence:** >RC205555 protein sequence  
Red=Cloning site Green=Tags(s)

MTLLLCLVCLTAALAHGCLHCHSNFSKKFSFYRHHVNFKSWVGDIPVSGALLTDWSDDTMKELHLAIPA  
 KITREKLDQVATAVYQMMDQLYQKMYFPGYFPNELRNIFREQVHLIQNAIIESRIDCQHRGIFQYETI  
 SCNNCTDSHVACFGYNCESSAQWKSAVQGLLNYINNWHKQDTSMSLVSPALRCLPEPHLANLTLEDAEAC  
 LKQH

TRTRPLEQKLISEEDLAANDILDYKDDDDKV

**Chromatograms:** [https://cdn.origene.com/chromatograms/mk6314\\_d06.zip](https://cdn.origene.com/chromatograms/mk6314_d06.zip)

**Restriction Sites:** SgfI-MluI

**Cloning Scheme:**



**ACCN:** NM\_001031735

**ORF Size:** 642 bp

**OTI Disclaimer:** The molecular sequence of this clone aligns with the gene accession number as a point of reference only. However, individual transcript sequences of the same gene can differ through naturally occurring variations (e.g. polymorphisms), each with its own valid existence. This clone is substantially in agreement with the reference, but a complete review of all prevailing variants is recommended prior to use. [More info](#)

**OTI Annotation:** This clone was engineered to express the complete ORF with an expression tag. Expression varies depending on the nature of the gene.

**Components:** The ORF clone is ion-exchange column purified and shipped in a 2D barcoded Matrix tube containing 10ug of transfection-ready, dried plasmid DNA (reconstitute with 100 ul of water).

**Reconstitution Method:**

1. Centrifuge at 5,000xg for 5min.
2. Carefully open the tube and add 100ul of sterile water to dissolve the DNA.
3. Close the tube and incubate for 10 minutes at room temperature.
4. Briefly vortex the tube and then do a quick spin (less than 5000xg) to concentrate the liquid at the bottom.
5. Store the suspended plasmid at -20°C. The DNA is stable for at least one year from date of shipping when stored at -20°C.

**RefSeq:** [NM\\_001031735.1](#)

**RefSeq Size:** 966 bp

**RefSeq ORF:** 645 bp

**Locus ID:** 113177

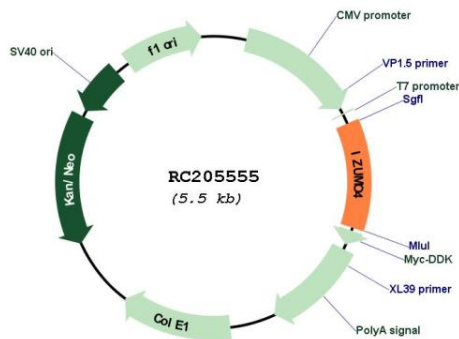
**UniProt ID:** [Q1ZYL8](#)

**Cytogenetics:** 19p13.3

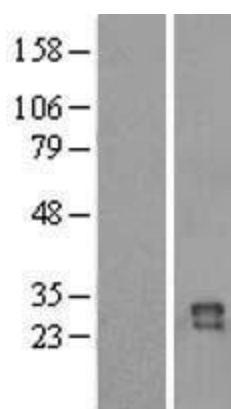
**Protein Families:** Secreted Protein, Transmembrane

**MW:** 24.5 kDa

**Product images:**



Circular map for RC205555



Western blot validation of overexpression lysate (Cat# [LY422181]) using anti-DDK antibody (Cat# [TA50011-100]). Left: Cell lysates from untransfected HEK293T cells; Right: Cell lysates from HEK293T cells transfected with RC205555 using transfection reagent MegaTran 2.0 (Cat# [TT210002]).