

Product datasheet for RC205551

SPATA17 (NM_138796) Human Tagged ORF Clone

Product data:

Product Type:	Expression Plasmids
Product Name:	SPATA17 (NM_138796) Human Tagged ORF Clone
Tag:	Myc-DDK
Symbol:	SPATA17
Synonyms:	CFAP305; FAP305; IQCH; MOT17; MSRG-11; MSRG11
Mammalian Cell Selection:	Neomycin
Vector:	pCMV6-Entry (PS100001)
E. coli Selection:	Kanamycin (25 ug/mL)
ORF Nucleotide Sequence:	>RC205551 ORF sequence Red=Cloning site Blue=ORF Green=Tags(s)

TTTTGTAATACGACTCACTATAGGGCGGCCGGAATTCGTCGACTGGATCCGGTACCGAGGAGATCTGCC
GCC**CGATCGCC**

ATGGCCACGTTAGCCCGGCTGCAAGCTAGGTCGTCGACTGTAGGAAATCAGTACTACTTTAGGAACAGTG
TTGTAGATCCATTTAGAAAAAGGAGAATGATGCAGCAGTTAAAATCCAAAGCTGGTTTCGAGGATGTCA
AGTTCGGGCATATATCAGGCATTTAAACAGGATTGTAACAATTATCAAAAATGGTGGAGAAGTTTCTTA
GGCAGAAAAGCAATATCAACTAAGTGTGCAGGTAGCATATTATACTATGATGATGAATCTCTACAATGCAA
TGGCTGTCAGGATTCAGAGACGATGGCGAGGCTATAGGGTTCGGAAGTACCTCTTTAATTATTATTT
GAAAGAGTACCTGAAAGTCGTTTCAGAGACCAATGATGCAATTAGGAAGGCACTGGAGGAGTTTGCAGAA
ATGAAAGAAAGAGAAGAGAAGAGGCTAACCTCGAAAGGGAAGAGAAGAAAAGAGATTACCAAGCCCGAA
AGATGCATTACCTCCTCAGCACAAAGCAGATTCAGGAATATACAATTCACCTTCAGAAAAGAGCCTGA
TCCATGGGAGCTGCAATTACAAAAGGCAAAGCCTTTAACACACCGAAGACCTAAAGTTAAGCAGAAGGAC
TCCACCAGCCTTACTGATTGGCTAGCTTGTACAAGCGCCCGTTCTTTTCTCGGTCTGAAATTCTACCAC
CTATTAATAGAAAGCAATGTCAGGGGCCCTTCGAGATATCACCGAAGTATTAGAACAACGCTACAGGCC
TTTGGAGCCAACGTTGCGGGTGGCAGAACCAATCGATGAGTTAAAGTTGGCCAGAGAGGAGCTCAGAAGA
GAGGAATGGCTGCAAAAATGAAAATGACAATATGTTTTTGGCATTCTTTCATACCAAAAATGAAAAGT
ACATCCCATCAATGCATTTATCAAGCAAGTATGGTCCTATTTCTTACAAAAGAACAATTCCGAAGTAAAA
TCCTAAGAAATGGATCTGTGACAAGGATTTCCAGACTGTATTACCATCATTTGAGCTCTTCTCAAAGTAT
GGAAAATTATATTTCAAAGCTGGACAGATTGTA

ACGCGTACGCGGCCGCTCGAGCAGAAACTCATCTCAGAAGAGGATCTGGCAGCAAATGATATCCTGGATT
ACAAGGATGACGACGATAAGGTTTAA



[View online »](#)

Protein Sequence: >RC205551 protein sequence
Red=Cloning site Green=Tags(s)

MATLARLQARSSTVGNQYYFRNSVVDPPFRKKENDAAVKIQSWFRGCQVRAYIRHLNRIVTIIQKWWRSFL
 GRKQYQLTVQVAYTMMNLYNAMAVRIQRRWRGYRVRKYLFNYYYLKEYLKVVSETNDAIRKALEEFAE
 MKEREKKANLEREEKRQDYQARKMHYLLSTKQIPGIYNSPFRKEPDPWELQLQKAKPLTHRRPKVKQKD
 STSLTDWLACTSARSFPRSEILPPINRKCQGGPFRDITEVLEQRYRPLEPTLRVAEPIDELKLAAREELRR
 EEWLQNVNDNMFLPFSSYHKNEKYIPSMHLSSKYGPISYKEQFRSENPKKVICDKDFQTVLPSFELFSKY
 GKLYSKAGQIV

TRTRPLEQKLISEEDLAANDILDYKDDDDKV

Chromatograms: https://cdn.origene.com/chromatograms/mk6314_h10.zip

Restriction Sites: SgfI-MluI

Cloning Scheme:



* The last codon before the Stop codon of the ORF

ACCN: NM_138796

ORF Size: 1083 bp

OTI Disclaimer: The molecular sequence of this clone aligns with the gene accession number as a point of reference only. However, individual transcript sequences of the same gene can differ through naturally occurring variations (e.g. polymorphisms), each with its own valid existence. This clone is substantially in agreement with the reference, but a complete review of all prevailing variants is recommended prior to use. [More info](#)

OTI Annotation: This clone was engineered to express the complete ORF with an expression tag. Expression varies depending on the nature of the gene.

Components: The ORF clone is ion-exchange column purified and shipped in a 2D barcoded Matrix tube containing 10ug of transfection-ready, dried plasmid DNA (reconstitute with 100 ul of water).

Reconstitution Method:

1. Centrifuge at 5,000xg for 5min.
2. Carefully open the tube and add 100ul of sterile water to dissolve the DNA.
3. Close the tube and incubate for 10 minutes at room temperature.
4. Briefly vortex the tube and then do a quick spin (less than 5000xg) to concentrate the liquid at the bottom.
5. Store the suspended plasmid at -20°C. The DNA is stable for at least one year from date of shipping when stored at -20°C.

Note: Plasmids are not sterile. For experiments where strict sterility is required, filtration with 0.22um filter is required.

RefSeq: [NM_138796.2](#), [NP_620151.1](#)

RefSeq Size: 1251 bp

RefSeq ORF: 1086 bp

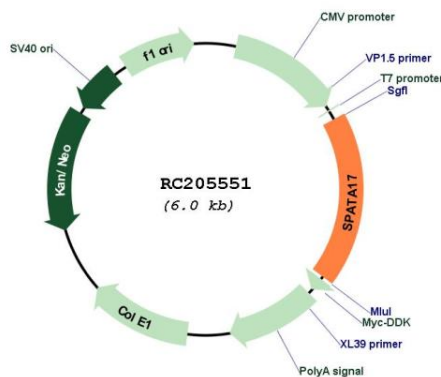
Locus ID: 128153

UniProt ID: [Q96L03](#)

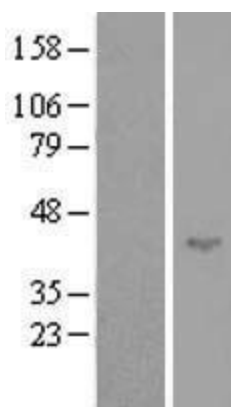
Cytogenetics: 1q41

MW: 43.5 kDa

Product images:



Circular map for RC205551



Western blot validation of overexpression lysate (Cat# [LY408482]) using anti-DDK antibody (Cat# [TA50011-100]). Left: Cell lysates from untransfected HEK293T cells; Right: Cell lysates from HEK293T cells transfected with RC205551 using transfection reagent MegaTran 2.0 (Cat# [TT210002]).