

Product datasheet for RC205550

ITPRID2 (NM_006751) Human Tagged ORF Clone

Product data:

Product Type:	Expression Plasmids
Product Name:	ITPRID2 (NM_006751) Human Tagged ORF Clone
Tag:	Myc-DDK
Symbol:	ITPRID2
Synonyms:	CS-1; CS1; KRAP; SPAG13; SSFA2
Mammalian Cell Selection:	Neomycin
Vector:	pCMV6-Entry (PS100001)
E. coli Selection:	Kanamycin (25 ug/mL)
ORF Nucleotide Sequence:	>RC205550 ORF sequence Red=Cloning site Blue=ORF Green=Tags(s)

TTTTGTAATACGACTCACTATAGGGCGGCCGGAATTCGTCGACTGGATCCGGTACCGAGGAGATCTGCC
GCC**CGATCGCC**

ATGGACCGGCCCTGTCGTGTCGGCGGAGGCGGAGGAGGAACTGGAGTGGCAAGTGGCGAGTCGCAGGA
GGAAGGCTGGGCCAAGTGCCGCAGCTCCTGGCAAGCGTCGGAGACGGAGGATCTGTCCACAGAAGCGAC
GACGCAGGACGAGGAGGAGGACGAGGAGGAGGACCTCCCCGGCGCGCAGCTGCCCGCAGCGGGGGAAGA
GGAAACGTGCCAACGAGAAGATCGCGATATGGCTCAAGGACTGCCGTACACCTTTGGGAGCCTCACTGG
ATGAACAAAGCAGTAGTACACTCAAGGGTGTGCTTGTGAGAAATGGAGGAAGTTTGAAGATGATTTGTC
ATTGGGAGCTGAAGCCAACACCTCCATGAAAGTGATGCTCAAATGAAAACCTGCAATAATCTTGCC
AAAGAGAGAAGATTACAGTTTCATCAGAAAGGAGAAATGAATTCCAATGGATCTGGGAAAAGTAGTG
GGACAGTTTCAAGTGTTCAGAATTGTTGGAACCTTATGAGGAAGATCCTGAAGAAATCTTTATAATCT
TGGATTTGGACGTGATGAACCAGATATTGCTTCTAAAAATCCTCCAGATTTTTTAATTCATCATCCTTT
GCCAAAGGGATAGATATTAAGTATTTTGGAGTCTCAGATGCAACGGATGGAAGTAGAAAACCAAAT
ATGCTTTAACAAGCCGTTTTCGTCAAATGAAGTGCTTACTACTGTGGCCAATGCGTTTTCTTTATA
TTCTCAAGTCTCCGGGACGCCCCGCAGAGAATTGGAAGTATGCTCCTCAGTGACCTTAACAAGGAGACA
GACCCACCTCCACCTTTAACTCGAAGTAACACTGCAAATCGTTTTAATGAAAACACTCTCAAACCTGAAT
TATGTGTTGATAAAACAGAGAAAAGGAGAAAGTAGTAGTCCTTCCATCAGCTGAAAAAGGAAAGATTCT
AAATGTTTCAGTGATTGAAGAAAGTGGCAATAAAAACGATCAAAAAGTCTCAAAAAATTATGAAGAAGAAA
GAGTCATCTTCTATGTTGGCTACAGTTAAAGAAGAAGTCTCTGGTAGTTCAGCAGCTGTTACGGAGAATG
CTGATAGTGATAGAATTTCTGATGAAGCAAATAGTAATTTAACAAGGAACTGAAAATGAACAAAGTAA
AGAAAACCTCAAAGTCATGAGAGTAACTGGGTGAGGAATCTGGTATTGTAGAATCCAAATAGATAGTGAT
TTCAACATATCCAGCCACAGTGAGCTGGAAAATAGCAGTGAGCTGAAAAGTGCCATATATCCACACCTG
AAAAAGAGCCTTGTGCACCACTGACAATACCATCCATAAGAAATATAATGACACAGCAGAAGGACTCCTT
CGAAATGGAAGAGGTTCAAAGTACGGAGGAGAAGCTCCTCATGTTCCAGCCACTTACCAGCTAGGTCTT



[View online »](#)

ACGAAGTCGAAAAGAGATCATCTGTTACGTACTGCAAGTCAGCATTCCGATAGCAGTGGTTTTGCTGAAG
ATTCTACAGACTGCCTATCCCTAATCATCTTCAGGTTCCAGGAGTCCTTGCAGGCTATGGGGAGTAGTGC
TGATAGTTGTGACAGTGAGACAACAGTTACGTCACCTTGGTGAAGACCTTGCCACACCAACAGCACAAGAC
CAGCCTTATTTAATGAATCAGAGGAGGAGTCTCTTGTCCCTCTCAGAAGGGACTAGAGAAGGCAGCAG
CAGTTGCAGACAAAAGAAAATCAGGTAGCCAGGATTTCCCTCAGTGCAACACCATTGAGAATACAGGAAC
TAAACAGTCCACCTGTAGTCCAGGGGATCATATCATTGAAATTAAGTGAAGTGAAGAGGATTTGTTTCCA
GCAGAGACAGTAGAGCTACTGAGGGAAGCAAGTCTGAAAGTGATGTGGGTAAAAGCAGTGAAAGTGAAT
TACTCAGTATACCACACACCATTCTGAAATCATTGGCTTCTATTGAAGCTAAATGCAGTGATATGAG
CTCTGAAAATACAACCTGGGCCTCCCTCTCCATGGACAGAGTTAATACAGCTTTGCAAAGAGCTCAAATG
AAGTTTTGCAGTCTGTCTAATCAAAGGATGGGGCTAGCCTGCTAAAATCAAAGATTTGTTAAAACAAA
GGTACTTATTTGCAAAGCTGGCTATCCTTAAGAAGGTCTCAGTCTTTACCAACCACCTTATTGAGCCC
AGTAAGGGTTGTCTCTGTCAATGTTGATTATCTCCAGAAAAGAGACCAGATGCAGCCACCTTCC
TTCACCTATAAGTACACACCTGAAGAGGAGCAGGAATTGAAAAGCGGGTATGGAACATGATGGTCAGT
CTTTAGTTAAATCGACCTTTTCATCTCCATCATCTGTGAAGAAAAGAAGCCCCCAGAGTGAGGC
GCCGCGGTGGAGGAATGCCATCATGGAAGGACTCCTACCTGTTACGGCTTGCTCCACCACCAATGTCT
CAGTCTACCTGTTCCCTTCAATCCATCCACTCTGAGTGGCAAGAAAGGCCCTGTGTGAGCACACAAGAA
CTCTGAGCACTCACAGTGTCCCAACATATCAGGGGCTACTTGTAGTGCCTTCGTTCCCTTTCCGGGTG
TCCTTACTCACATAGACATGCCACCTACCTTACCAGTGTGCTCTGTGAATCCTCCTCAGCCATAGAA
ATGCAGTTGCGAAGAGTATTACATGATATTAGAACTCACTGCAGAACTTTTACAGTACCTATGATGA
GAGGACCTGATCTGTGCTGCTCCATATAGTACTCAGAAATCATCTGTTCTACCTTTTATGAAAATAC
TTTTCAGGAGCTCCAGGTAATGAGGCGGAGCCTGAATTTGTTTAGAACACAAATGATGGATTTAGAATTG
GCAATGCTGCGTCAGCAAACCATGGTTTATCATCATATGACTGAGGAGGAGAGGTTTGAAGTTGATCAGC
TCCAGGGTTTGAAGAAATCAGTCCGAATGGAACCTCAGGACCTGGAACCTGCAGCTGGAGGAGCGCCTGCT
GGGCCTGGAGGAACAGCTTCGTGCTGTGCGCATGCCTTACCCTTCCGCTCCTCCGCACTCATGGGAATG
TGTGGCAGTAGAAGCGCTGATAACTTGTATGCCCTTCTCCATTGAATGTAATGGAACCAGTCACTGAAC
TGATGCAGGAGCAGTCATACCTGAAGTCTGAATTGGGCCTGGGACTTGGAGAAATGGGATTTGAAATTCC
TCCTGGAGAAAGCTCAGAATCTGTTTTTCCCAAGCAACATCAGAATCATCTTCTGTATGTTCTGGTCCC
TCTCATGCTAACAGAAGAACTGGAGTACCTTCTACTGCCTCAGTGGGCAATCCAAAACCCATTAGTGG
CAAGGAAGAAAGTGTCCGAGCATCGGTGGCTTAACGCCAACAGCTCCTTCTAGAACAGGCTCTGTGCA
GACACCTCCAGATTTGGAAGTTCTGAGGAAGTTGATGCAGCTGAAGGAGCCCCAGAAGTTGTAGGACCT
AAATCTGAAGTGAAGAAGGGCATGAAAACCTCCATCAATGCCAGCTGCTGAGGAAATGCATAAAAATG
TGGAGCAAGATGAGTTGCAGCAAGTCATACGGGAGGTTGGCATGGATCCTATTAGCTGTGTAATACTGGA
ATTATCAATGATATGCACTGGTGGAGGTGTTATTTGTGCTTTAGAAGATACTTGCTGT

ACGCGTACGCGGCCGCTCGAGCAGAACTCATCTCAGAAGAGGATCTGGCAGCAATGATATCCTGGATT
ACAAGGATGACGACGATAAGGTTTAA

Protein Sequence: >RC205550 protein sequence
 Red=Cloning site Green=Tags(s)

```
MDRPLSSSAEAEELWQVASRRRKAWAKCRSSWQASETEDLSTEATTQDEEEDEEEDLPGAQLPAAGGR
GNVPNEKIAIWLKDCRTPLGASLDEQSSSTLKGVLVRNGGSFEDDLSLGAEANHLHESDAQIENCNNILA
KERRLQFHQKGRSMNSTGSGKSSGTVSSVSELLELYEEDPEEILYNLGFRDEPDIASKIPSRFFNSSF
AKGIDIKVFLSAQMQRMEVENPNYALTSRFRQIEVLTTVANAFSSLYSQVSGTPLQRIGSMSSVTSNKET
DPPPPLTRSNTANRLMKTL SKLNL CVDKTEKGESSPPSAEKGKILNVSVIEESGNKNDQKSQKIMKKK
ESSSMLATVKEEVSGSSAAVTENADSDRISDEANSNFNQGTENEQSKETQSHESKLGEEESGIVESKLDSD
FNISSELENSSELKSVHISTPEKEPCAPLTIPSIRNIMTQQKDSFEMEEVQSTEGEAPHVPATYQLGL
TKSKRDHLLRTASQHSDSGFAEDSTDCLSLNHLQVQESLQAMGSSADSCDSETTVTSLGEDLATPTAQD
QPYFNESEEEESL VPLQKGLEKAAAVADKRKSGSQDFPQCNTIENTGKQSTCSPGDHIIIEITEVEEDLFP
AETVELLREASAESDVGKSESEFTQYTHHILKSLASIEAKCDMSSENTTGPSSMDRVNTALQRAQM
KVCSLSNQRMGRSLLKSKDLLKQRYLFAKAGYPLRRSQSLPTLLSPVRVSSVNVRLSPGKETRCSPPS
FTYKYTPEEEQELEKRVMEHDGQSLVKSTIFISPSSVKKEEAPQSEAPRVEECHHGRTPTCSRLAPPPMS
QSTCSLSHSIHSEWQERPLCEHRTLSTHSVPNISGATCSAFASPFGCPYSHRHATYPYRVCSVNPPSAIE
MQLRRVLHDIRNSLQNL SQYPMRGPDPAAAPYSTQKSSVLPLEYENTFQELQVMRRSLNLFRTQMMDLEL
AMLRQQTVMVYHHMTEERFEVDQLQGLRNSVRMELQDLELQLEERLLGLEEQLRVRMPSPFRSSALMG
CGRSADNLSCPSPNVMEPVTELMQEYSYLKSELGLGLGEMGFEIPPGESSESVFSQATSESSSVCSGP
SHANRRTGVPSTASVGSKTPLVARKKVFRAVSALTPTAPSRTGSVQTPPDLESSEEVDAAEAGEPEVVG
KSEVEEGHGLPSMPAAEEMHNVEQDELQQVIREVGMDPISCVILELSMICTGGGVICALDTECC
```

TRTRPLEQKLISEEDLAANDILDYKDDDDKV

Chromatograms: https://cdn.origene.com/chromatograms/mk6290_d07.zip

Restriction Sites: SgfI-MluI

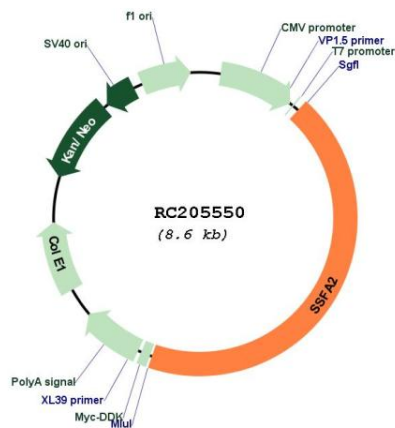
Cloning Scheme:



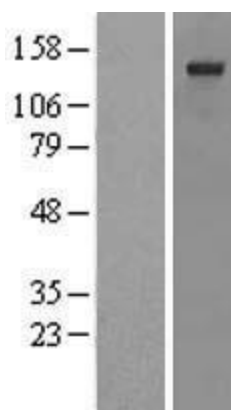
ACCN: NM_006751

ORF Size: 3768 bp

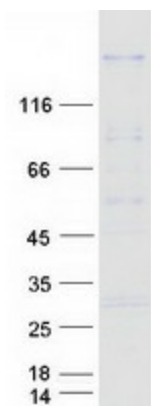
OTI Disclaimer:	The molecular sequence of this clone aligns with the gene accession number as a point of reference only. However, individual transcript sequences of the same gene can differ through naturally occurring variations (e.g. polymorphisms), each with its own valid existence. This clone is substantially in agreement with the reference, but a complete review of all prevailing variants is recommended prior to use. More info
OTI Annotation:	This clone was engineered to express the complete ORF with an expression tag. Expression varies depending on the nature of the gene.
Components:	The ORF clone is ion-exchange column purified and shipped in a 2D barcoded Matrix tube containing 10ug of transfection-ready, dried plasmid DNA (reconstitute with 100 ul of water).
Reconstitution Method:	<ol style="list-style-type: none"> 1. Centrifuge at 5,000xg for 5min. 2. Carefully open the tube and add 100ul of sterile water to dissolve the DNA. 3. Close the tube and incubate for 10 minutes at room temperature. 4. Briefly vortex the tube and then do a quick spin (less than 5000xg) to concentrate the liquid at the bottom. 5. Store the suspended plasmid at -20°C. The DNA is stable for at least one year from date of shipping when stored at -20°C.
RefSeq:	NM_006751.4 , NP_006742.2
RefSeq Size:	5220 bp
RefSeq ORF:	3771 bp
Locus ID:	6744
UniProt ID:	P28290
Cytogenetics:	2q31.3
MW:	137.9 kDa

Product images:


Circular map for RC205550



Western blot validation of overexpression lysate (Cat# [LY416448]) using anti-DDK antibody (Cat# [TA50011-100]). Left: Cell lysates from untransfected HEK293T cells; Right: Cell lysates from HEK293T cells transfected with RC205550 using transfection reagent MegaTran 2.0 (Cat# [TT210002]).



Coomassie blue staining of purified ITPRID2 protein (Cat# [TP305550]). The protein was produced from HEK293T cells transfected with ITPRID2 cDNA clone (Cat# RC205550) using MegaTran 2.0 (Cat# [TT210002]).