

Product datasheet for **RC205544**

SPATA18 (NM_145263) Human Tagged ORF Clone

Product data:

Product Type:	Expression Plasmids
Product Name:	SPATA18 (NM_145263) Human Tagged ORF Clone
Tag:	Myc-DDK
Symbol:	SPATA18
Synonyms:	Mieap; SPETEX1
Mammalian Cell Selection:	Neomycin
Vector:	pCMV6-Entry (PS100001)
E. coli Selection:	Kanamycin (25 ug/mL)



[View online »](#)

ORF Nucleotide Sequence:

>RC205544 ORF sequence
 Red=Cloning site Blue=ORF Green=Tags(s)

TTTTGTAATACGACTCACTATAGGGCGGCCGGAATTCGTCGACTGGATCCGGTACCGAGGAGATCTGCC
 GCC**CGGATCGCC**

ATGGCGGAAAACCTGAAAAGACTGGTCTCAAACGAAACTTACGAACGTTGCAGGAAAAGCTAGACTTCT
 GGCTGAAGGAGTACAACCAAACACGTGTGATCAAATCTAAACCATTGCCTTGAACCTATTGAGCAAGT
 TGCCAAGGTGCAGGGACAACCTTTGGGATCCTCACAGCAGCAGCCCAAGAAGGAGGACGTAATGATGGT
 GTGAAAACAATCAAGTCACGCCTTTTGCCTTGGCTGGAGGCTTCTTTACTGCTGCTTCCCTGGGAAAAT
 CTGTTGACAGCAAGTCCCCTCTCTGCAGGACACGTTTGTAGGGAGAGACATAAAGATCCCAGTCTCG
 GGATCGGGATATGCAACAGTTAGACTCTAATTTGAACTCAACCCGGAGTCAATGCAACCAGGTTCAAGAC
 GATCTGGTTGAACTGAAAAGAATCTTGAAGAAAGCAAGAACAGATCGGCCATATCCCTTTTGGCTGCAG
 AGGAGGAAATAAATCAGCTGAAAAGCAGCTTAAATCTCTTCAAGCTCAGGAGGATGCCGCCACAGAAA
 CACAGATCAGAGGAGCTCAGAGAATAGGCGGTGAGAGCCTTGGAGCTTGGAGGAGCGGAAGCGTGAGCAG
 TGGAACTCACTCAAGCAGAATGCAGACCAGCAGGACACAGAAGCCATGTCCGATTATAAGAAACAGCTCC
 GAAACCTGAAGGAGGAGATAGCTGTTCTGTCTGCTGAGAAAAGTCACTCCAAGGAAGTCTCCAGGAG
 CCGGTCTCCAGCCCTGCCCTCGCAGCCGTAGCTGCAGCCGAGCAGATCTGCCAGCCCTCCACCGCT
 GTCAAGGTCAGGAGACCGTCCCCAAACCGCTCCAAGCTGTCCAATGTGGCGCGCAAGGCTGCCCTTTGT
 CCCGGTTCAGCGATTCTATTCCAGGCCCGCTGGACGCGCAGTGCCTGCTGCGGCGTGCATCGACAA
 GGCTGAGACCGTTACGCGGATCATCTACATCGCCACAGTGGAGGCATTCCATGTAGCAAAAATGGCATT
 AGACACTCAAGATCCATGTGAGAAAATCGTTGACACCATCTTATGTGGGGTCAATGACTTTGAGAATG
 CTGTCTTGGATTATGTCATTTGTCATCTTGATCTATATGATTCTCAAAGCAGTGTCAATGATGTGATCCG
 AGCCATGAATGTCAATCCCAAGATTTTATTCCCTCCTGTGCTTGAATTTTGCCTTCTCAGTGACTTCATC
 CAGGAGATATGTTGCATTGCCTTTGCAATGCAGGCCTTAGAACCCCTAGATATTGCATATGGAGCAG
 ATGGAGAAGTTTTAATGATTGCAAAATACCGCCGAGCTACGACTCGGATTTCACTGCTCCCTTAGTCT
 CTATCACGTGTGGCTGCTCTCATGGAGAATGACTGTGTCATTATGAAGGGAGAAGCTGTACCAGGAGA
 GGGGCTTTTTGGAATTCGGTGCATCTGTAAGTCGTTGTCGAAGCAGGAGTTAAGTCCCATTTGCCCC
 GTAGCCAAATTGGTTAAACACGATGTCTCGAAGTCGGAGTCTTCTCCAATAAGATGTGGATTGCCAAG
 ATTT

ACGCGTACGCGGCCGCTCGAGCAGAAACTCATCTCAGAAGAGGATCTGGCAGCAAATGATATCCTGGATT
 ACAAGGATGACGACGATAAGGTTTAA

Protein Sequence:

>RC205544 protein sequence
 Red=Cloning site Green=Tags(s)

MAENLKRLVSNELRRTLQEKLDLFWLKEYNTNTCDQNLNHCLELIEQVAKVQQLFGILTAAAEQEGGRNDG
 VETIKSRLLPWLEASFTAASLGKSVDSKVPQLDFTDRERHKDPSPRDRDMQQLDSNLNSTRSQCNVQD
 DLVETEKLEESKNRSAILSLAAEEEEINLKKQLKSLQAQEDARHRNTDQRSSNRSEPSWLEERKREQ
 WNSLQKQADQQDTEAMSDYKQLRNLKEEIAVLSAEKSALQGRSSRSRSPAPRSRSCRSRSASPSTA
 VKVRRPSPNRSKLSNVARKAALLSRFSDSYSQARLDAQCLLRCCIDKAETVQRIIYIATVEAFHVAKMAF
 RHFKIHRKSLTPSYVGSNDFENAVLDYVICHLDLYDSQSSVNDVIRAMNVNPKISFPPVDFCLLSDFI
 QEICCIAFAMQALEPPLDIAYGADGEVFNDCYRRSYSDFTAPLVL YHWPALMENDCVIMKGEAVTRR
 GAFWNSVRSVSRCSRSLSPICPRSQIGLNTMSRSRSPSPIRCGLPRF

TRTRPLEQKLISEEDLAANDILDYKDDDDKV

Chromatograms:

https://cdn.origene.com/chromatograms/mk6536_f01.zip

Restriction Sites:

Sgfl-MluI

Cloning Scheme:


ACCN: NM_145263

ORF Size: 1614 bp

OTI Disclaimer: Due to the inherent nature of this plasmid, standard methods to replicate additional amounts of DNA in E. coli are highly likely to result in mutations and/or rearrangements. Therefore, OriGene does not guarantee the capability to replicate this plasmid DNA. Additional amounts of DNA can be purchased from OriGene with batch-specific, full-sequence verification at a reduced cost. Please contact our customer care team at custsupport@origene.com or by calling 301.340.3188 option 3 for pricing and delivery.

The molecular sequence of this clone aligns with the gene accession number as a point of reference only. However, individual transcript sequences of the same gene can differ through naturally occurring variations (e.g. polymorphisms), each with its own valid existence. This clone is substantially in agreement with the reference, but a complete review of all prevailing variants is recommended prior to use. [More info](#)

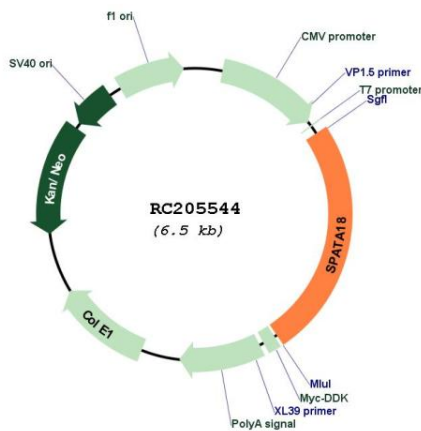
OTI Annotation: This clone was engineered to express the complete ORF with an expression tag. Expression varies depending on the nature of the gene.

Components: The ORF clone is ion-exchange column purified and shipped in a 2D barcoded Matrix tube containing 10ug of transfection-ready, dried plasmid DNA (reconstitute with 100 ul of water).

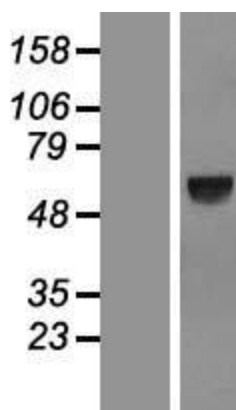
- Reconstitution Method:**
1. Centrifuge at 5,000xg for 5min.
 2. Carefully open the tube and add 100ul of sterile water to dissolve the DNA.
 3. Close the tube and incubate for 10 minutes at room temperature.
 4. Briefly vortex the tube and then do a quick spin (less than 5000xg) to concentrate the liquid at the bottom.
 5. Store the suspended plasmid at -20°C. The DNA is stable for at least one year from date of shipping when stored at -20°C.

Note:	Plasmids are not sterile. For experiments where strict sterility is required, filtration with 0.22um filter is required.
RefSeq:	NM_145263.4
RefSeq Size:	4425 bp
RefSeq ORF:	1617 bp
Locus ID:	132671
UniProt ID:	Q8TC71
Cytogenetics:	4q12
MW:	61.1 kDa
Gene Summary:	This gene encodes a p53-inducible protein that is able to induce lysosome-like organelles within mitochondria that eliminate oxidized mitochondrial proteins, thereby contributing to mitochondrial quality control. Dysregulation of mitochondrial quality control is associated with cancer and degenerative diseases. The encoded protein mediates accumulation of the lysosome-like mitochondrial organelles through interaction with B cell lymphoma 2 interacting protein 3 and B cell lymphoma 2 interacting protein 3 like at the outer mitochondrial membrane, which allows translocation of lysosomal proteins to the mitochondrial matrix from the cytosol. Alternative splicing results in multiple transcript variants. [provided by RefSeq, Sep 2016]

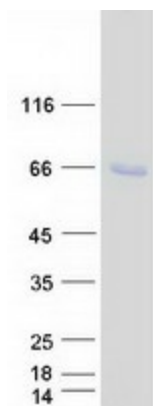
Product images:



Circular map for RC205544



Western blot validation of overexpression lysate (Cat# [LY407989]) using anti-DDK antibody (Cat# [TA50011-100]). Left: Cell lysates from untransfected HEK293T cells; Right: Cell lysates from HEK293T cells transfected with RC205544 using transfection reagent MegaTran 2.0 (Cat# [TT210002]).



Coomassie blue staining of purified SPATA18 protein (Cat# [TP305544]). The protein was produced from HEK293T cells transfected with SPATA18 cDNA clone (Cat# RC205544) using MegaTran 2.0 (Cat# [TT210002]).