

Product datasheet for **RC205542**

C6orf57 (SDHAF4) (NM_145267) Human Tagged ORF Clone

Product data:

Product Type: Expression Plasmids
Product Name: C6orf57 (SDHAF4) (NM_145267) Human Tagged ORF Clone
Tag: Myc-DDK
Symbol: C6orf57
Synonyms: C6orf57; Sdh8
Mammalian Cell Selection: Neomycin
Vector: pCMV6-Entry (PS100001)
E. coli Selection: Kanamycin (25 ug/mL)
ORF Nucleotide Sequence: >RC205542 ORF sequence
Red=Cloning site Blue=ORF Green=Tags(s)

TTTTGTAATACGACTCACTATAGGGCGGCCGGAATTCGTCGACTGGATCCGGTACCGAGGAGATCTGCC
GCC**CGATCGCC**

ATGACCCATCGAGGCTTCCTGGTTGCTTAGCTGGTCTCGGCCACGGCGTGGAGAGCGGCAAGATCAC
CCCTTCTGTGTCATTCTCTGAGGAAAACAAGTTCTTCTCAAGGAGGAAAGTCTGAACTTGTCAAACAGTC
CCTTAAGAAGCCGATGTTACCAGAAGGTCGTTTATGCACCAGAGGATCCCATTTAGAGAAAGAACCA
CTGAAAAATTTCCAGATGATGTTAATCCAGTGACCAAAGAAAAAGGTGGACCCAGGGGCCAGAACCTA
CCCGATATGGAGATTGGGAACGAAAAGGACGCTGTATTGATTTT

ACGCGTACGCGGCCGCTCGAGCAGAAACTCATCTCAGAAGAGGATCTGGCAGCAAATGATATCCTGGATT
ACAAGGATGACGACGATAAGGTTTAA

Protein Sequence: >RC205542 protein sequence
Red=Cloning site Green=Tags(s)
MTPSRLPWLLSWVSATAWRAARSPLLCHSLRKTSSSQGGKSELVKQSLKKPMLPEGRFDAPEDSHLEKEP
LEKFPDDVNPVTKKGGPRGPEPTRYGDWERKGRCIDF

TRTRPLEQKLISEEDLAANDILDYKDDDDKV

Chromatograms: https://cdn.origene.com/chromatograms/mk6313_h09.zip

Restriction Sites: SgfI-MluI



[View online »](#)

Cloning Scheme:


ACCN: NM_145267

ORF Size: 324 bp

OTI Disclaimer: The molecular sequence of this clone aligns with the gene accession number as a point of reference only. However, individual transcript sequences of the same gene can differ through naturally occurring variations (e.g. polymorphisms), each with its own valid existence. This clone is substantially in agreement with the reference, but a complete review of all prevailing variants is recommended prior to use. [More info](#)

OTI Annotation: This clone was engineered to express the complete ORF with an expression tag. Expression varies depending on the nature of the gene.

Components: The ORF clone is ion-exchange column purified and shipped in a 2D barcoded Matrix tube containing 10ug of transfection-ready, dried plasmid DNA (reconstitute with 100 ul of water).

Reconstitution Method:

1. Centrifuge at 5,000xg for 5min.
2. Carefully open the tube and add 100ul of sterile water to dissolve the DNA.
3. Close the tube and incubate for 10 minutes at room temperature.
4. Briefly vortex the tube and then do a quick spin (less than 5000xg) to concentrate the liquid at the bottom.
5. Store the suspended plasmid at -20°C. The DNA is stable for at least one year from date of shipping when stored at -20°C.

RefSeq: [NM_145267.1](#)

RefSeq Size: 526 bp

RefSeq ORF: 327 bp

Locus ID: 135154

UniProt ID: [Q5VUM1](#)

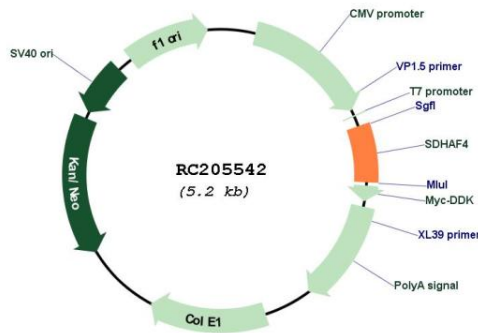
Cytogenetics: 6q13

Protein Families: Secreted Protein

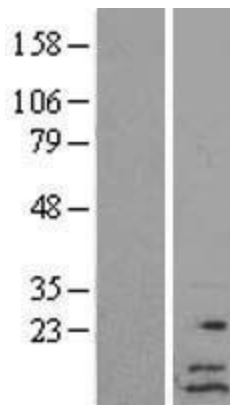
MW: 12.2 kDa

Gene Summary: Plays an essential role in the assembly of succinate dehydrogenase (SDH), an enzyme complex (also referred to as respiratory complex II) that is a component of both the tricarboxylic acid (TCA) cycle and the mitochondrial electron transport chain, and which couples the oxidation of succinate to fumarate with the reduction of ubiquinone (coenzyme Q) to ubiquinol (PubMed:24954416). Binds to the flavoprotein subunit SDHA in its FAD-bound form, blocking the generation of excess reactive oxygen species (ROS) and facilitating its assembly with the iron-sulfur protein subunit SDHB into the SDH catalytic dimer (By similarity).[UniProtKB/Swiss-Prot Function]

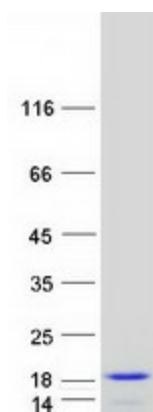
Product images:



Circular map for RC205542



Western blot validation of overexpression lysate (Cat# [LY407992]) using anti-DDK antibody (Cat# [TA50011-100]). Left: Cell lysates from untransfected HEK293T cells; Right: Cell lysates from HEK293T cells transfected with RC205542 using transfection reagent MegaTran 2.0 (Cat# [TT210002]).



Coomassie blue staining of purified SDHAF4 protein (Cat# [TP305542]). The protein was produced from HEK293T cells transfected with SDHAF4 cDNA clone (Cat# RC205542) using MegaTran 2.0 (Cat# [TT210002]).