

## Product datasheet for RC205540

### HSDL1 (NM\_031463) Human Tagged ORF Clone

#### Product data:

Product Type:	Expression Plasmids
Product Name:	HSDL1 (NM_031463) Human Tagged ORF Clone
Tag:	Myc-DDK
Symbol:	HSDL1
Synonyms:	SDR12C3
Mammalian Cell Selection:	Neomycin
Vector:	pCMV6-Entry (PS100001)
E. coli Selection:	Kanamycin (25 ug/mL)
ORF Nucleotide Sequence:	>RC205540 ORF sequence Red=Cloning site Blue=ORF Green=Tags(s)

TTTTGTAATACGACTCACTATAGGGCGCCGGGAATTCGTCGACTGGATCCGGTACCGAGGAGATCTGCC  
GCC**CGATCGCC**

ATGGCTGCTGTTGACAGTTTCTACCTCTTGACAGGAAATCGCCAGGTCTTGCAATTGCTATATGGAAG  
CTCTAGCTTTGGTTGGAGCCTGGTATACGGCCAGAAAAAGCATCACTGTCATCTGTGACTTTTACAGCCT  
GATCAGGCTGCATTTTATCCCCGCTGGGGAGCAGAGCAGACTTGATCAAGCAGTATGGAAGATGGGCC  
GTTGTCAGCGGTGCAACAGATGGGATTGAAAAAGCCTACGCTGAAGAGTTAGCAAGCCGAGGTCTCAATA  
TAATCCTGATTAGTCGGAACGAGGAGAAGTTGCAGGTTGTTGCTAAAGACATAGCCGACAGTACAAAGT  
GAAACTGATATTATAGTTGCGGACTTCAGCAGCGGTCGTGAGATCTACCTTCCAATTGAGAAAGCCCTG  
AAGGACAAAGACGTTGGCATCTTGGTAAATAACGTGGGTGTTTATCCCTACCCGAGTATTTCACTC  
AGCTGTCCGAGGACAAGCTCTGGGACATCATAAATGTGAACATTGCCGCCGCTAGTTTGATGGTCCATGT  
TGTGTTACCGGAATGGTGGAGAGAAAGAAAGGTGCCATCGTCACGATCTTCTGGCTCCTGCTGCAAA  
CCCCTCTCAGCTGGCTGCATTTTCTGCTTCTAAGGCTATTTAGACCACTTCAGCAGAGCCTTGAAT  
ATGAATATGCCTCTAAAGGAATCTTTGTACAGAGTCTAATCCCTTCTATGTAGCCGCCAGCATGACAGC  
ACCCAGCAACTTTCTGCACAGGTGCTCGTGGTTGGTGCCTTCGCCAAAAGTCTATGCACATCATGCTGTT  
TCTACTTTGGGATTTCCAAAAGGACCACAGGATATTGGTCCCATTCTATTCAGTTTCTTTTGCACAGT  
ATATGCCTGAATGGCTCTGGGTGTTGGGAGCAAATATTCTCAACCGTTCACTACGTAAGGAAGCCTTATC  
CTGCACAGCC

**ACGCGT**ACGCGGCCGCTCGAGCAGAAACTCATCTCAGAAGAGGATCTGGCAGCAAATGATATCCTGGATT  
ACAAGGATGACGACGATAAGGTTTAA



[View online »](#)

**Protein Sequence:** >RC205540 protein sequence  
Red=Cloning site Green=Tags(s)

MAAVDSFYLLYREIARSCNCYMEALALVGAWYTARKSITVICDFYSLIRLHFIPRLGSRADLIKQYGRWA  
 VVSGATDGIGKAYAEELASRGLNIIILISRNEEKLVVAKDIADTYKVETDIIVADFSSGREIYLPREAL  
 KDKDVGILVNNVGVFYPYPOYFTQLSEDKLWDIINVNIAAASLMVHVVLPGMVERKKGAIVTISSGSCCK  
 PTPQLAAF SASKAYLDHFSRALQY EYASKGIFVQSLIPFYVAASMTAPSNFLHRC SWLVPSPKVYAHHAV  
 STLGISKRRTGYWSHSIQFLFAQYMEPELWVWGANILNRSLRKEALSCTA

TRTRPLEQKLISEEDLAANDILDYKDDDDKV

**Chromatograms:** [https://cdn.origene.com/chromatograms/mk6313\\_e06.zip](https://cdn.origene.com/chromatograms/mk6313_e06.zip)

**Restriction Sites:** SgfI-MluI

**Cloning Scheme:**



**ACCN:** NM\_031463

**ORF Size:** 990 bp

**OTI Disclaimer:** The molecular sequence of this clone aligns with the gene accession number as a point of reference only. However, individual transcript sequences of the same gene can differ through naturally occurring variations (e.g. polymorphisms), each with its own valid existence. This clone is substantially in agreement with the reference, but a complete review of all prevailing variants is recommended prior to use. [More info](#)

**OTI Annotation:** This clone was engineered to express the complete ORF with an expression tag. Expression varies depending on the nature of the gene.

**Components:** The ORF clone is ion-exchange column purified and shipped in a 2D barcoded Matrix tube containing 10ug of transfection-ready, dried plasmid DNA (reconstitute with 100 ul of water).

**Reconstitution Method:**

1. Centrifuge at 5,000xg for 5min.
2. Carefully open the tube and add 100ul of sterile water to dissolve the DNA.
3. Close the tube and incubate for 10 minutes at room temperature.
4. Briefly vortex the tube and then do a quick spin (less than 5000xg) to concentrate the liquid at the bottom.
5. Store the suspended plasmid at -20°C. The DNA is stable for at least one year from date of shipping when stored at -20°C.

**RefSeq:** [NM\\_031463.5](#)

**RefSeq Size:** 3668 bp

**RefSeq ORF:** 993 bp

**Locus ID:** 83693

**UniProt ID:** [Q3SXM5](#)

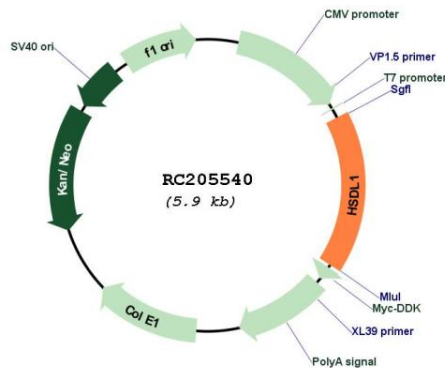
**Cytogenetics:** 16q24.1

**Domains:** adh\_short

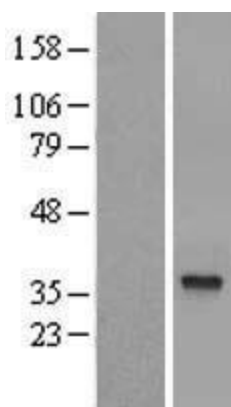
**Protein Families:** Druggable Genome

**MW:** 37 kDa

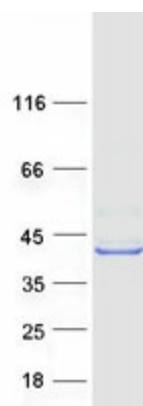
**Product images:**



Circular map for RC205540



Western blot validation of overexpression lysate (Cat# [LY410505]) using anti-DDK antibody (Cat# [TA50011-100]). Left: Cell lysates from untransfected HEK293T cells; Right: Cell lysates from HEK293T cells transfected with RC205540 using transfection reagent MegaTran 2.0 (Cat# [TT210002]).



Coomassie blue staining of purified HSDL1 protein (Cat# [TP305540]). The protein was produced from HEK293T cells transfected with HSDL1 cDNA clone (Cat# RC205540) using MegaTran 2.0 (Cat# [TT210002]).