

## Product datasheet for **RC205538**

### TMEM171 (NM\_173490) Human Tagged ORF Clone

#### Product data:

Product Type:	Expression Plasmids
Product Name:	TMEM171 (NM_173490) Human Tagged ORF Clone
Tag:	Myc-DDK
Symbol:	TMEM171
Synonyms:	PRP2
Mammalian Cell Selection:	Neomycin
Vector:	pCMV6-Entry (PS100001)
E. coli Selection:	Kanamycin (25 ug/mL)
ORF Nucleotide Sequence:	>RC205538 ORF sequence Red=Cloning site Blue=ORF Green=Tags(s)

TTTTGTAATACGACTCACTATAGGGCGCCGGGAATTCGTCGACTGGATCCGGTACCGAGGAGATCTGCC  
GCC**CGGATCGCC**

ATGTCTCCTCGAGCTGCTGCTGAGCCAGATGGGGACCAGCAGGACAGACACGTCAGCAAACCTCATCCTCT  
GCTTCTTTGTCTTCGGCGCCGTCTTGTGTGTGTGGGAGTCTGCTCTCCATCTTTGGGTTCCAGGCATG  
CCAATAAAGCCCTCCCAGACTGCCCCATGGTGTCTAAGGTGGCGGGCCTGCATGTGCCGTGGTTGGG  
CTTGGGGCTGTGATCCTGGCCCGCTCCCGGGCGCAACTTCAGCTCCGTGCAGGGCTGCAGAGAGGTGAGC  
AGATGGACCCCGACCGAGCCTTCATCTGTGGAGAGAGCCGCCAGTTTGCCAGTGCCTTATCTTTGGGTT  
TCTGTTCTTGACAAGCGGCATGCTCATCAGCGTCTGGGCATTTGGGTCCCTGGATGTGGCTCCAACCTGG  
GCGCAGGAACCGCTAAACGAGACAGACACTGGCGACTCAGAGCCCCGGATGTGTGGGTTCTTTCTCTGC  
AGATCATGGGGCCCTTGATTGTGCTTGTGGGATTGTGTTTCTTCGTGGTTGCCCATGTTAAGAAGAGAAA  
CACGCTGAATGCTGGCCAGGATGCCTCTGAGAGAGAAGAGGGACAGATCCAGATTATGGAGCCTGTCCAG  
GTCAGTGTAGGTGACTCGGTAATAATATTTCCACCCCTCCACCCTTACTTTCTGAATCTTCAGCTT  
CTGCGGTCGCTGAGAGTCTGGAACCTAACAGTCTGCTTCCGAATGAAAACCCCTTCATATTACAGTAT  
TTTCAACTATGGCAGGACCCCAACTTCAGAGGGTGCAGCCTCTGAAAGAGACTGTGAATCTATATATACC  
ATTTCTGGGACGAATTCATCTTCTGAGGCCTCACACACTCCACATCTTCCATCTGAATTGCCTCCTAGAT  
ATGAAGAAAAGAAAATGCTGCAGCTACATTCTTGCCTCTATCTTCTGAGCCTTCCCCACCG

**ACGCGT**ACGCGGCCGCTCGAGCAGAAACTCATCTCAGAAGAGGATCTGGCAGCAAATGATATCCTGGATT  
ACAAGGATGACGACGATAAGGTTTAA



[View online »](#)

**Protein Sequence:** >RC205538 protein sequence  
Red=Cloning site Green=Tags(s)

MSPAAAAPDGDQDRHVSKLILCFFVFGAVLLCVGVLLSIFGFQACQYKPLPDCPMVLKVAGPACAVVG  
 LGAVILARSRAQLQLRAGLQRGQQMDPDRAFICGESRQFAQCLIFGFLFTSGMLISVLGIWVPGCGSNW  
 AQEPLNETDGTGSEPRMCGFLSLQIMGPLIVLVGLCFFVVAHVKKRNTLNAGQDASEREEGQIQIMEPVQ  
 VTVGDSVIFPPPPPPYFPESASAVAESPGTNSLLPNENPPSYYSIFNYGRTPTSEGAASERDCESIYT  
 ISGTNSSSEASHTPHLPSELPPRYEEKENAAATFLPLSSEPSPP

TRTRPLEQKLISEEDLAANDILDYKDDDDKV

**Chromatograms:** [https://cdn.origene.com/chromatograms/mk6341\\_d10.zip](https://cdn.origene.com/chromatograms/mk6341_d10.zip)

**Restriction Sites:** SgfI-MluI

**Cloning Scheme:**



**ACCN:** NM\_173490

**ORF Size:** 972 bp

**OTI Disclaimer:** The molecular sequence of this clone aligns with the gene accession number as a point of reference only. However, individual transcript sequences of the same gene can differ through naturally occurring variations (e.g. polymorphisms), each with its own valid existence. This clone is substantially in agreement with the reference, but a complete review of all prevailing variants is recommended prior to use. [More info](#)

**OTI Annotation:** This clone was engineered to express the complete ORF with an expression tag. Expression varies depending on the nature of the gene.

**Components:** The ORF clone is ion-exchange column purified and shipped in a 2D barcoded Matrix tube containing 10ug of transfection-ready, dried plasmid DNA (reconstitute with 100 ul of water).

**Reconstitution Method:**

1. Centrifuge at 5,000xg for 5min.
2. Carefully open the tube and add 100ul of sterile water to dissolve the DNA.
3. Close the tube and incubate for 10 minutes at room temperature.
4. Briefly vortex the tube and then do a quick spin (less than 5000xg) to concentrate the liquid at the bottom.
5. Store the suspended plasmid at -20°C. The DNA is stable for at least one year from date of shipping when stored at -20°C.

**Note:** Plasmids are not sterile. For experiments where strict sterility is required, filtration with 0.22um filter is required.

**RefSeq:** [NM\\_173490.5](#)

**RefSeq Size:** 1266 bp

**RefSeq ORF:** 975 bp

**Locus ID:** 134285

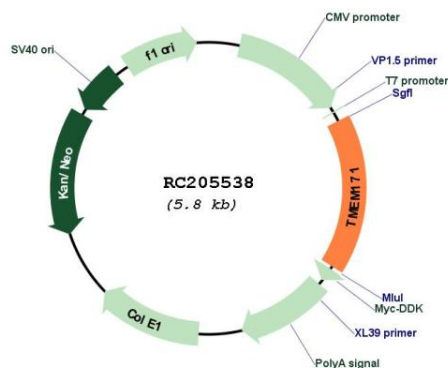
**UniProt ID:** [Q8WVE6](#)

**Cytogenetics:** 5q13.2

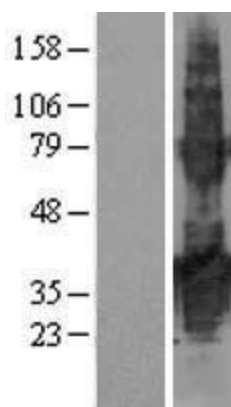
**Protein Families:** Druggable Genome, GPCR, Transmembrane

**MW:** 34.7 kDa

### Product images:



Circular map for RC205538



Western blot validation of overexpression lysate (Cat# [LY406606]) using anti-DDK antibody (Cat# [TA50011-100]). Left: Cell lysates from untransfected HEK293T cells; Right: Cell lysates from HEK293T cells transfected with RC205538 using transfection reagent MegaTran 2.0 (Cat# [TT210002]).