

## Product datasheet for RC205536

### SLC35G2 (NM\_025246) Human Tagged ORF Clone

#### Product data:

Product Type:	Expression Plasmids
Product Name:	SLC35G2 (NM_025246) Human Tagged ORF Clone
Tag:	Myc-DDK
Symbol:	SLC35G2
Synonyms:	TMEM22
Vector:	pCMV6-Entry (PS100001)
E. coli Selection:	Kanamycin (25 ug/mL)
Cell Selection:	Neomycin
ORF Nucleotide Sequence:	>RC205536 ORF sequence Red=Cloning site Blue=ORF Green=Tags(s)

TTTTGTAATACGACTCACTATAGGGCGCCGGAATTCGTCGACTGGATCCGGTACCGAGGAGATCTGCC  
GCC**CGGATCGCC**

ATGGATACTTCTCCCTCCAGAAAATATCCAGTTAAAAACGGGTGAAAAATACATCCCAACACAGTGATGG  
TGAATAATACTTCTCATTATCCCCAGCCTGGCGATGATGGATATGAAGAAATCAATGAAGGCTATGGGAA  
TTTTATGGAGAAAATCCAAAGAAAGGTCTGCTGAGTGAATGAAAAAAAAAGGGAGAGCTTTCTTTGGA  
ACCATGGATACCTTACCTCCACCAACAGAAGACCCAATGATCAATGAGATTGGACAATCCAGAGCTTTG  
CAGAAAAAACATTTTTCAATCCCGAAAAATGTGGATAGTGCTGTTTGGATCTGCTTTGGCTCATGGATG  
TGTAAGCTTTACTACTAGGCTTGTCTGATCGGTCTAAAGTTCCATCTCTAGAAGTATTTTATCCGT  
TCTGTTTTTCAGGTCTTATCTGTGTTAGTTGTGTGTTACTATGAGGAGGCCCCCTTTGGACCCAGTGGAT  
ACAGATTACGACTCTTCTTTTATGGTGTATGCAATGTCATTTCTATCACTTGTGCTTATACATCATTTTC  
AATAGTTCCTCCCAGCAATGGGACCACTATGTGGAGAGCCACAACACTACAGTCTTCAGTGCCATTTTGGCT  
TTTTTACTCGTAGATGAGAAAAATGGCTTATGTTGACATGGCTACAGTTGTTTGCAGCATCTTAGGTGTT  
GTCTTGTGATGATCCAAACATTGTTGATGAAGACAATCTTTGTTAAATGCCTGGAAAGAACGCTTTGG  
GTACACCATGACTGTGATGGCTGGACTGACCACTGCTCTCTCAATGATAGTATACAGATCCATCAAGGAG  
AAGATCAGCATGTGGACTGCACTGTTTACTTTTTGGTTGGACTGGGACAATTTGGGAATATCTACTATGT  
TTATTCTCAAGAACCATCATCCATTAGATGGAGAAACCTGGAGTTATCTCATTGCTATATGTGCTG  
TTCTACTGCAGCATTCTTAGGAGTTTATTATGCCTTGGACAAATCCATCCAGCCTTGGTTAGCACAGTA  
CAACATTTGGAGATTGTTGATGCTATGGTCTTGCAGCTTCTCGTGTGCACATATTTCTAGCATCTATG  
ATGTTTTTGGAGGGTAATCATTATGATTAGTGTTTTTGCTTGTGCTGCTATAAACTTTACTGGAGGAA  
TTAAGAAGGCAGGACTACCAGGAAATACTAGACTCTCCATTA

**ACGCGT**ACGCGGCCGCTCGAGCAGAAACTCATCTCAGAAGAGGATCTGGCAGCAAATGATATCCTGGATT  
ACAAGGATGACGACGATAAGGTTTAA



[View online »](#)



ACCN: NM\_025246

ORF Size: 1236 bp

**OTI Disclaimer:** The molecular sequence of this clone aligns with the gene accession number as a point of reference only. However, individual transcript sequences of the same gene can differ through naturally occurring variations (e.g. polymorphisms), each with its own valid existence. This clone is substantially in agreement with the reference, but a complete review of all prevailing variants is recommended prior to use. [More info](#)

**OTI Annotation:** This clone was engineered to express the complete ORF with an expression tag. Expression varies depending on the nature of the gene.

RefSeq: [NM\\_025246.3](#)

RefSeq Size: 2079 bp

RefSeq ORF: 1239 bp

Locus ID: 80723

UniProt ID: [Q8TBE7](#)

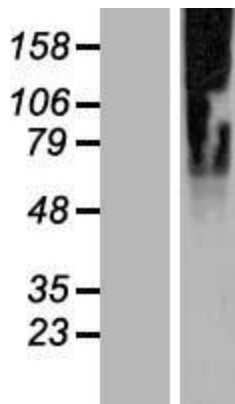
Domains: DUF6

Protein Families: Transmembrane

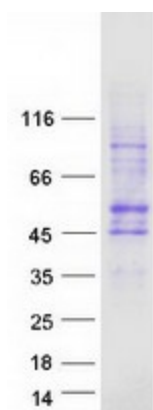
MW: 46.5 kDa

Gene Summary: May play a role in cell proliferation.[UniProtKB/Swiss-Prot Function]

### Product images:



Western blot validation of overexpression lysate (Cat# [LY420394]) using anti-DDK antibody (Cat# [TA50011-100]). Left: Cell lysates from untransfected HEK293T cells; Right: Cell lysates from HEK293T cells transfected with [RC218185] using transfection reagent MegaTran 2.0 (Cat# [TT210002]).



Coomassie blue staining of purified SLC35G2 protein (Cat# [TP305536]). The protein was produced from HEK293T cells transfected with SLC35G2 cDNA clone (Cat# RC205536) using MegaTran 2.0 (Cat# [TT210002]).