

Product datasheet for **RC205532**

LRRCC1 (NM_033402) Human Tagged ORF Clone

Product data:

Product Type:	Expression Plasmids
Product Name:	LRRCC1 (NM_033402) Human Tagged ORF Clone
Tag:	Myc-DDK
Symbol:	LRRCC1
Synonyms:	CLERC; CLERK; SAP2; VFL1
Mammalian Cell Selection:	Neomycin
Vector:	pCMV6-Entry (PS100001)
E. coli Selection:	Kanamycin (25 ug/mL)



[View online »](#)

ORF Nucleotide Sequence:

>RC205532 ORF sequence
 Red=Cloning site Blue=ORF Green=Tags(s)

TTTTGTAATACGACTCACTATAGGGCGGCCGGGAATTCGTCGACTGGATCCGGTACCGAGGAGATCTGCC
 GCC**CGCATCGCC**

ATGGAGGCGGCCGGCGCGGTGGTGGCGGCAGAGCGGAAGTGAAAAACGAAGACGGCGACAGCAGCTGCC
 GGGATGTATGCTTCATGGACAAAAGGCTTGCAGAGCATATCAGAATTATCTTTAGATTCAACTCTTCATGC
 CGTCAATCTTCATTGCAATAACATCTCCAAGATCGAAGCCATTGATCATATTTGGAATTTACAACATCTA
 GATCTGTCATCTAATCAAATAAGTAGAATTGAAGGACTAAACACACTGACAAAACGTGCACATTAATTT
 TGTCTGCAATTTGATTACAAAAGTAGAAGGACTTGAAGAATAATTAATCTGACTAGACTAAATGTATC
 TTATAACCACGTAGATGATCTTAGTGGATTGATCCCTTCATGGAATTAAGCATAAACTTAGATATATT
 GATCTACATAGTAATCGTATAGATAGTATCCATCACTTACTTCAGTGTATGGTAGGATTGCACCTCTCGA
 CCAATCTTATTTGGAGAAAGATGGAGACGATAATCCTGTCTGTCGACTGCCAGGGTACAGAGCAGTTAT
 TCTCCAGACTTTGCCACAGCTTAGAATCCTAGATTGCAAGAACATATTTGGTGAACCAAGTAAATTTGACA
 GAAATAAATTCATCACAGCTGCAGTGCCTAGAAGTCTTTTGGATAATTTAGTTTCTTCTGATTCTCCCC
 TAAATATAAGTGAAGATGAGATCATTGATAGAATGCCAGTGATAACAGCACCTATCGATGAGTTAGTTCC
 CTTGGAACAGTTTGAAGTACACCAAGTATGCTGTGTTGACGCTTTTTATGCTGTGTGCAATCTTCT
 GAGCCAGAGAAAAATAATCATGAAAACGATTTGCAGAATGAGATAAACTTCAGAAATTAGATGACCAAAA
 TTCTACAACCTTCTAAATGAAACTTCAATTCATAGATAACGTTCTTGAGAAAGACCCAGACCAAAAAAG
 AGACACAGATAAATCTTGAAGTACTATGAAACAGAAAAGAATAACAATAGAAAAGTTCTCGAAGA
 TCAAAAAATCCCTTATGATGCCAAAACCTTCAACTATTAAGCACCACAATAAAAACTCAACTCTTTTG
 TAAGTTGTAATCGTAAAATGAAACCCTTACCTTAAAGAATTATATGTAAGCTCATCTTTAGCAAACTG
 TCCTATGTTACAAGAATCAGAAAAGCCAAAGACTGAAATAATTAAGTAGACCAAAAGTCACTCAGAAGAC
 AACACTTACCAGTCCCTTGTGAAACAGCTAGACCAAGAGAGAGAGAAGAGATGGAGAGCTGAGCAAGCCG
 AAAATAAACTCATGGATTATATTGATGAGCTGCATAAACATGCAAAATGAAAAAGAGGATATTCATAGTCT
 GGCTCTACTTACCACAGATAGGCTAAAGGAAATATTTTTAGAGAGAGAAATTCCAAAGGACAACCTCGAA
 GTTATGGTTCACAAACTTCAAAATGAAATTAAAAACTGACTGTTGAACTAATGAAAGCAAAAGATCAAC
 AAGAGGATCACCTTAAACACTTAAAGAACCTCGAAAAACATTAGAGAAAATGGAGAGACAAAAAGGCA
 GCAGCAGGCAGCAGATAAGACTGATCCAAGAGGTGAACTCAAAGCTTCAGCTGCCGATAGAGAAATA
 TACTTACTTAGAACTTCCCTTCATCGAGAAAGAGAACAAGCGCAACAACCTCATCAACTTCTTGATTGA
 AAGAACAGGAACACAGGAAGGAACTTGAACAAGGGAGTTTTTTACTGATGCTGACTTCCAGGATGCCTT
 AGCTAAAGAAATAGCCAAAGAAGAGAAAAAGCATGAGCAAAATGATAAAAGAAATACCAAGAGAAAATTGAC
 GTGTTAAGCCAGCAGTATATGGATTTAGAAAATGAATTCGATTTGCTTTAACTGTTGAAGCCAGAAGAT
 TTCAAGATGTTAAAGATGGTTTTGAAAATGTTGCAACTGAGTTAGCAAAGAGCAAACATGCTCTTATTTG
 GGCTCAACGAAAAGAAAATGAGTCTTCTCTTTAATTAAGATCTGACCTGTATGGTAAAGGAACAAAA
 ACAAACCTGGCAGAAGTTTCTAATTTGAAACAAGAAACAGCAGCAATTTACAGAATCAAATCAACACCC
 TTGAAATTTTAAATGAAGATGACAAGCAGAAGAGTATTCAAATAGAACTTCTCAAGCAGCAAAAAGTCCA
 GCTTATTTCTGAGCTAGCAGCCAAGGAATCACTAATATTTGGTTTAAAGGACAGAAAAGAAAATGGGGA
 CATGAGCTGGCACAACAAGGATCTTCTAGCCAAAATCGTGGAAAATTTGGAGGCTCAAATTTGAGAGTT
 TATCTAGAGAGAATGAATGTCTGCGAAAAGACAAAATGAAAGTGATAGTGATGCATTAAGAATAAAGTGCAA
 AATCATAGACGACCAAACTGAACTATTAGAAAATTAAGAGATTGTTTACAAGAAAAGATGAACACATC
 AAAAGATTACAAGAAAAGATCACAGAAATAGAAAAATGCACTCAAGAACAACCTTGAATGAAAAATCTTAC
 AACTGGATGAGGTAAGTGAAGTTGAAAGGCACAATGAAAGAAAAGAAAAACTAAAACAACAGTTGAA
 AGGAAAGGAAGTAGAACTTGAAGAAATCAGAAAAGCTTACAGTACACTGAATCGGAAGTGGCATGATAAA
 GGAGAACTTCTATGTCATCTTGAACACAAGTAAAAGAAGTGAAGAAAAATTTGAAAACAAGGAAAAAG

ACGCGTACGCGGCCGCTCGAGCAGAACTCATCTCAGAAGAGGATCTGGCAGCAAATGATATCCTGGATT
 ACAAGGATGACGACGATAAAGTTTAA

Protein Sequence: >RC205532 protein sequence
 Red=Cloning site Green=Tags(s)

```
MEAAAAVAAEAEVENEDGDSSCGDVCVCFMDKGLQSI SELSLDSTLHAVNLHCNNISKIEAIDHIWNLQHL
DLSSNQISRIEGLNLT KLCTLNLSCNLITKVEGLEELINLTRLNVSYNHVDDL SGLIPLHGIKHKLRYI
DLHSSNRIDSIHLLQCMVGLHFLTNLILEKGDGDDNPVCRLPGYRAVILQTL PQLRILDCKNIFGEPVNL T
EINSSQLQCLEGLLDNLVSSDSPLNISEDEIIDRMPVITAPIDELVPLEQFASTPSDAVLT SFMSVCQSS
EPEKNNHENDLQNEIKLQKLDQILQLLNETSNSIDNVLEKDPKRDITSESDYGNRKEYNRKVPRR
SKIPYDAKTIQTIKHHNKYNSFVSCNRMKPPYLKELVYSSSLANCPMLQESEKPKTEI IKVDQSHSED
NTYQSLVEQLDQEREKRWAEQAENKLMYIDELHGHANEKEDIHSLALLTTDRLKEIIFRERNKSGQLE
VMVHKLQNEIKKLTVELMKAKDQEDHLKHLRTLEKTKLEKMERQKRQQAAQIRL IQEVELKASAADREI
YLLRTSLHREREQAQLHQLLALKEQHRKELETREFFTDADFQDALAKEIAKEEKKHEQMIKEYQEKID
VLSQQYMDLENEFRIALTVEARRFQDVKDFENVATELAKSKHALIWAQRKENESSSLIKDLTCMVKEQK
TKLAEVSKLKQETAANLQNTLEILIEDDKQKSIQIPELLKHEKVLISELAAKESLIFGLRTERKVVWG
HELAQQGSSLAQNRGKLEAQIESLSRENECLRKTNESDSDALRIKCKIIDDQTETIRKLDKDLQEKDEHI
KRLQEKITEIEKCTQEQLDEKSSQLDEVLEKLERHNERKEKLGKQQLKGKEVELEEIRKAYSTLNRKWHDK
GELLCHLETQVKEVKEKFENKEK
```

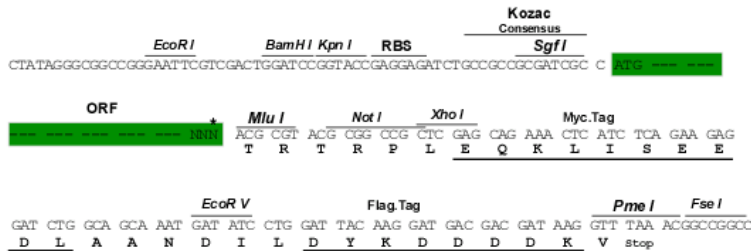
TRTRPLEQKLISEEDLAANDILDYKDDDDKV

Chromatograms: https://cdn.origene.com/chromatograms/mk6316_b07.zip

Restriction Sites: SgfI-MluI

Cloning Scheme:

Cloning sites used for ORF Shuttling:



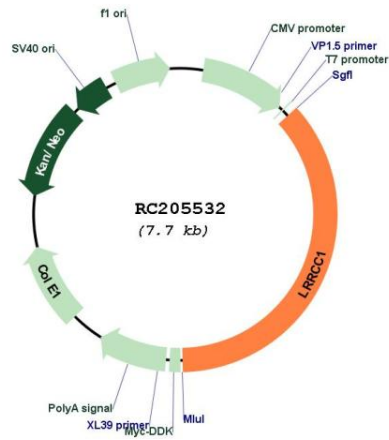
* The last codon before the Stop codon of the ORF

ACCN: NM_033402

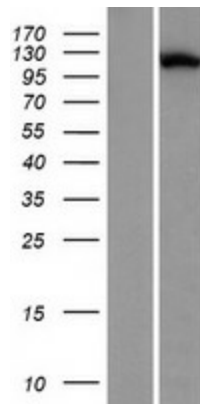
ORF Size: 2799 bp

OTI Disclaimer:	The molecular sequence of this clone aligns with the gene accession number as a point of reference only. However, individual transcript sequences of the same gene can differ through naturally occurring variations (e.g. polymorphisms), each with its own valid existence. This clone is substantially in agreement with the reference, but a complete review of all prevailing variants is recommended prior to use. More info
OTI Annotation:	This clone was engineered to express the complete ORF with an expression tag. Expression varies depending on the nature of the gene.
Components:	The ORF clone is ion-exchange column purified and shipped in a 2D barcoded Matrix tube containing 10ug of transfection-ready, dried plasmid DNA (reconstitute with 100 ul of water).
Reconstitution Method:	<ol style="list-style-type: none"> 1. Centrifuge at 5,000xg for 5min. 2. Carefully open the tube and add 100ul of sterile water to dissolve the DNA. 3. Close the tube and incubate for 10 minutes at room temperature. 4. Briefly vortex the tube and then do a quick spin (less than 5000xg) to concentrate the liquid at the bottom. 5. Store the suspended plasmid at -20°C. The DNA is stable for at least one year from date of shipping when stored at -20°C.
Note:	Plasmids are not sterile. For experiments where strict sterility is required, filtration with 0.22um filter is required.
RefSeq:	NM_033402.1
RefSeq Size:	3876 bp
RefSeq ORF:	3099 bp
Locus ID:	85444
UniProt ID:	Q9C099
Cytogenetics:	8q21.2
MW:	108.2 kDa
Gene Summary:	This gene encodes a centrosomal protein that maintains the structural integrity of the centrosome and plays a key role in mitotic spindle formation. The encoded protein contains an N-terminal leucine-rich repeat domain and a C-terminal coiled-coil domain. It associates with the centrosome throughout the cell cycle and accumulates on the mitotic centrosome. [provided by RefSeq, Mar 2017]

Product images:



Circular map for RC205532



Western blot validation of overexpression lysate (Cat# [LY409554]) using anti-DDK antibody (Cat# [TA50011-100]). Left: Cell lysates from untransfected HEK293T cells; Right: Cell lysates from HEK293T cells transfected with RC205532 using transfection reagent MegaTran 2.0 (Cat# [TT210002]).