

## Product datasheet for **RC205530**

### **C13ORF28 (SPACA7) (NM\_145248) Human Tagged ORF Clone**

#### Product data:

**Product Type:** Expression Plasmids  
**Product Name:** C13ORF28 (SPACA7) (NM\_145248) Human Tagged ORF Clone  
**Tag:** Myc-DDK  
**Symbol:** C13ORF28  
**Synonyms:** C13orf28  
**Mammalian Cell Selection:** Neomycin  
**Vector:** pCMV6-Entry (PS100001)  
**E. coli Selection:** Kanamycin (25 ug/mL)  
**ORF Nucleotide Sequence:** >RC205530 ORF sequence  
**Red=Cloning site Blue=ORF Green=Tags(s)**

TTTTGTAATACGACTCACTATAGGGCGGCCGGAATTCGTCGACTGGATCCGGTACCGAGGAGATCTGCC  
GCC**CGATCGCC**

ATGGCAGTGAGCCAAGGAGACGGGACCCTCTGCTTTGTCCTCCTGCTGTGCTGTTGGCAAGAACTGAGC  
TCCGGCCGAGAACCGTGATTCCAGGTTACCTACTGAAATACCATTTCAGTTCAAACAGGAGGATATGTC  
TGAATTATTAGATGAAATCTGGTCCAGGAGATTTGGATCTGAATAAAACAACCCGAGCGAAATGCCA  
AGTACAGCATCAACATTATCAACACCGTTACATGCTGGTATTGATGAGAATTATCAAGCTGGTGGTCTG  
AGAATTACCATGAATTATTAGAGAATTTACAATCTCTCCTGGCATTGAGGACAAAATTTCCAATGATGA  
AGCCAATGCTAATGCAAATCTCCATGGCGATCCTTCTGAGAATTATCGTGGGCCACAGGTGTCTCCTGGC  
AGTGAGAAGAGTGTTCAGTAAAGAAAAGAATTCAAAGAACACTCAGTATGAAAATCTATCCATTCTGG  
ACCAAATCCTTCAAATATTGGAAGATCTTCAGGAAACATTTTCCATAAAGAGCAGCAGAGGACCAGCGC  
ACAGAGGAGGAGCCAAGGCAGTCAG

**ACGCGT**ACGCGGCCGCTCGAGCAGAACTCATCTCAGAAGAGGATCTGGCAGCAAATGATATCCTGGATT  
ACAAGGATGACGACGATAAGGTTTAA

**Protein Sequence:** >RC205530 protein sequence  
**Red=Cloning site Green=Tags(s)**

MAVSQDGTLCFVLLCCWQETELRPRTVIPGSPTFIPFSSKQEDMSELLDEILVQEILDNLKTTPEMP  
STASTLSTPLHAGIDENYQAGGSENYHELLENLQFSPGIEDKISNDEANANLHGDPSENYRGPQVSPG  
SEKSVSSKEKNSKNTQYENLSILDQILQNIGRSSGNIHFHKEQQRRTSAQRSSQGSQ

**TRTRPLEQKLI**SEEDLAANDILDYKDDDDKV



[View online »](#)

**Chromatograms:** [https://cdn.origene.com/chromatograms/mk6287\\_d08.zip](https://cdn.origene.com/chromatograms/mk6287_d08.zip)

**Restriction Sites:** SgfI-MluI

**Cloning Scheme:**



**ACCN:** NM\_145248

**ORF Size:** 585 bp

**OTI Disclaimer:** The molecular sequence of this clone aligns with the gene accession number as a point of reference only. However, individual transcript sequences of the same gene can differ through naturally occurring variations (e.g. polymorphisms), each with its own valid existence. This clone is substantially in agreement with the reference, but a complete review of all prevailing variants is recommended prior to use. [More info](#)

**OTI Annotation:** This clone was engineered to express the complete ORF with an expression tag. Expression varies depending on the nature of the gene.

**Components:** The ORF clone is ion-exchange column purified and shipped in a 2D barcoded Matrix tube containing 10ug of transfection-ready, dried plasmid DNA (reconstitute with 100 ul of water).

**Reconstitution Method:**

1. Centrifuge at 5,000xg for 5min.
2. Carefully open the tube and add 100ul of sterile water to dissolve the DNA.
3. Close the tube and incubate for 10 minutes at room temperature.
4. Briefly vortex the tube and then do a quick spin (less than 5000xg) to concentrate the liquid at the bottom.
5. Store the suspended plasmid at -20°C. The DNA is stable for at least one year from date of shipping when stored at -20°C.

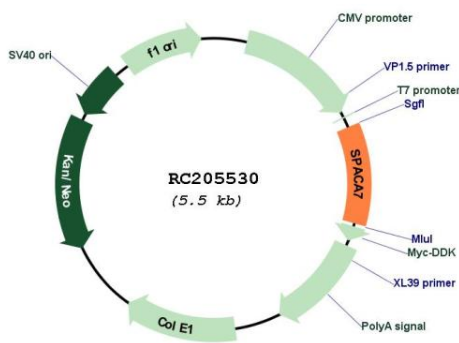
**Note:** Plasmids are not sterile. For experiments where strict sterility is required, filtration with 0.22um filter is required.

**RefSeq:** [NM\\_145248.3](#)

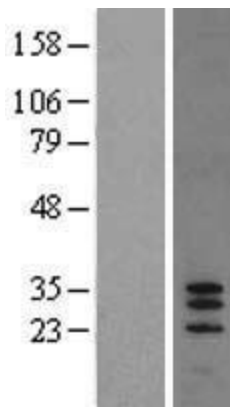
**RefSeq Size:** 783 bp

RefSeq ORF: 588 bp  
 Locus ID: 122258  
 UniProt ID: [Q96KW9](#)  
 Cytogenetics: 13q34  
 Protein Families: Secreted Protein  
 MW: 21.5 kDa  
 Gene Summary: Involved in fertilization. Seems not to play a direct role in sperm-egg binding or gamete fusion.[UniProtKB/Swiss-Prot Function]

### Product images:



Circular map for RC205530



Western blot validation of overexpression lysate (Cat# [LY407982]) using anti-DDK antibody (Cat# [TA50011-100]). Left: Cell lysates from untransfected HEK293T cells; Right: Cell lysates from HEK293T cells transfected with RC205530 using transfection reagent MegaTran 2.0 (Cat# [TT210002]).