

Product datasheet for **RC205529**

CCDC11 (CFAP53) (NM_145020) Human Tagged ORF Clone

Product data:

Product Type:	Expression Plasmids
Product Name:	CCDC11 (CFAP53) (NM_145020) Human Tagged ORF Clone
Tag:	Myc-DDK
Symbol:	CCDC11
Synonyms:	CCDC11; HTX6
Mammalian Cell Selection:	Neomycin
Vector:	pCMV6-Entry (PS100001)
E. coli Selection:	Kanamycin (25 ug/mL)



[View online »](#)

ORF Nucleotide Sequence:

>RC205529 ORF sequence
 Red=Cloning site Blue=ORF Green=Tags(s)

TTTTGTAATACGACTCACTATAGGGCGGCCGGGAATTCGTCGACTGGATCCGGTACCGAGGAGATCTGCC
 GCC**CGCATCGCC**

ATGTACAGCCAGCGGTTTGGCACCGTACAGCGGGAGGTTAAGGGCCCCACCCCCAAAGTGGTGATCGTGA
 GATCCAAGCCTCCTAAAGGCCAAGGAGCTGAGCACCATCTAGAAAAGAAATCCGACGCAGCCATCAGAAGCA
 TAATGCTATTTTGGCTTCCATTAAAGTCAAGTGAGCGGGATCGCTTGAAAGCTGAGTGGGACCAGCACAAT
 GACTGCAAGATTTTGGACAGCCTTGTGCGAGCAAGAATCAAGGATGCTGTGCAAGGGTTTATCATTAAACA
 TTGAAGAAAGACGAAATAAGCTACGTGAGCTTTTAGCATTAGAAGAAAATGAGTATTTTACAGAAAATGCA
 ATTGAAGAAAAGAACATTGAGGAGAAAAAAGATAGGATGAGAGAGAAAATAAATTAATAAAAAGAGAAG
 AATGAAAAGAGAGGCAGGATTTTGTGGCTGAAAAGCTAGACCAGCAATTCAGGGAACGCTGTGAGGAGC
 TCCGTGTTGAATTGTTATCTATCCATCAGAAGAAGGTGTGTGAGGAGCGGAAAGCACAGATTGCATTTAA
 TGAGGAGCTGAGCAGGCAAAAGCTGGTGAAGAGCAGATGTTCTCAAACCTCTGGGAGGAAGACCGATTA
 GCCAAGGAAAAGCGAGAAGCCAAAGAGGCGAGGAGACAGAAAAGAGCTGATGGAGAACACACGCCTGGGGC
 TGAATGCCAGATCACCAGCATCAAGGCACAAAGGCAGGCGACACAGCTGCTGAAGGAAGAGGAGGCACG
 CCTTGTGGAAAGTAAACACGCACAGATTAACATGAGAATGAACAGGATATGCTAAAGAAAACAGAAGGCA
 AAGCAGGAAACTAGGACCATTTTGCAAAAGCCCTACAAGAGAGGATAGAACATATTCAGCAGGAAATACA
 GAGACGAACAGGACTTGAACATGAAGCTCGTGCAAAGGGCCCTTCAAGACTTACAGGAAGAGGCAGATAA
 AAAGAAAACAAAAAGAGAAGATATGATAAGAGAACAGAAGATATACCATAAATATTTGGCACAGAGACGT
 GAGGAAGAAAAGCTCAGGAGAAAAGATTTGACAGAATATTAGAGGAAGACAAGGCAAAGAAGTTGGCTG
 AAGAGGACAAGGAGCTGAGACTTGAAAAGGAGGCAAGGAGACAGCTTGTGGATGAGGTCATGTGTACAAG
 AAAACTTCAAGTTCAAGAAAAGTTGCAACGAGAAGCTAAAGAACAGGAAGAACGTGCTATGGAACAGAAA
 CACATAAATGAAAGTCTTAAAGAACTTAACTGTGAAGAGAAGGAGAATTTTGAAGACGCCAACGTTTAG
 CCCAGGAGTACAGGAAGCAACTTCAGATGCAAATCGCCTACCAGCAGCAGTCCCAAGAAGCAGAGAAGGA
 AGAGAAAACGCCGAGAGTTTGAAGCAGGTGTAGCAGCAAACAAGATGTGTTTGGACAAGGTCCAGGAGGTC
 CTGTCCACCCATCAAGTGTGCCTCAAACATTCATCCCATGCGCAAGGCATGCCCCAGTAAAGCTTCCAC
 CG

ACGCGTACGCGGCCGCTCGAGCAGAAACTCATCTCAGAAGAGGATCTGGCAGCAAATGATATCCTGGATT
 ACAAGGATGACGACGATAAGGTTTAA

Protein Sequence:

>RC205529 protein sequence
 Red=Cloning site Green=Tags(s)

MYSQRFQVQREVKGPTPKVVIIVRSKPPKQGQAEHHLERIRRSHQKHNAIILASIKSSERDRLKAEWDQHN
 DCKILDLSLVRARIKDAVQGFIIINIEERNKLELLALEENEYFTQMQLKKEIIEKKDRMREKTKLLKEK
 NEKERQDFVAEKLDQQFRERCEELRVELLSIHQKVVCEERKAQIAFNEELSRQKLVEEQMFSKLWEEDRL
 AKEKREAQEARRQKELMENTRLGLNAQITSIKAQRQATQLLKEEARLVESNNAQIKHENEQDMLKKQKA
 KQETRTLQKALQERIEHIQQEYRDEQDLNMKL VQRALQDLQEEADKQKQKREDMIREQKIYHKYLAQRR
 EEEKAQEKQEFDRILEEDKAKKLAEKDKELRLEKEARRQLVDEVMCTRKLQVQEKLQREAKEQEERAMEQK
 HINESLKELNCEEKENFARRQLAQEYRQLQMQIAYQQQSQEAKEKEKRREFEAGVAANKMCLDKVQEV
 LSTHQVLPQNIHPMRKACPSKLPP

TRTRPLEQKLISEEDLAANDILDYKDDDDKV

Chromatograms:

https://cdn.origene.com/chromatograms/mk6316_d05.zip

Restriction Sites:

SgfI-MluI

Cloning Scheme:


ACCN: NM_145020

ORF Size: 1542 bp

OTI Disclaimer: The molecular sequence of this clone aligns with the gene accession number as a point of reference only. However, individual transcript sequences of the same gene can differ through naturally occurring variations (e.g. polymorphisms), each with its own valid existence. This clone is substantially in agreement with the reference, but a complete review of all prevailing variants is recommended prior to use. [More info](#)

OTI Annotation: This clone was engineered to express the complete ORF with an expression tag. Expression varies depending on the nature of the gene.

Components: The ORF clone is ion-exchange column purified and shipped in a 2D barcoded Matrix tube containing 10ug of transfection-ready, dried plasmid DNA (reconstitute with 100 ul of water).

- Reconstitution Method:**
1. Centrifuge at 5,000xg for 5min.
 2. Carefully open the tube and add 100ul of sterile water to dissolve the DNA.
 3. Close the tube and incubate for 10 minutes at room temperature.
 4. Briefly vortex the tube and then do a quick spin (less than 5000xg) to concentrate the liquid at the bottom.
 5. Store the suspended plasmid at -20°C. The DNA is stable for at least one year from date of shipping when stored at -20°C.

RefSeq: [NM_145020.5](#)

RefSeq Size: 1837 bp

RefSeq ORF: 1545 bp

Locus ID: 220136

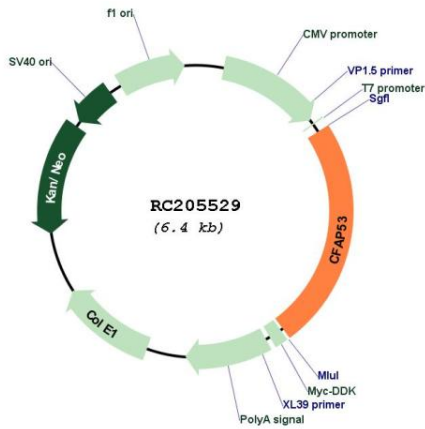
UniProt ID: [Q96M91](#)

Cytogenetics: 18q21.1

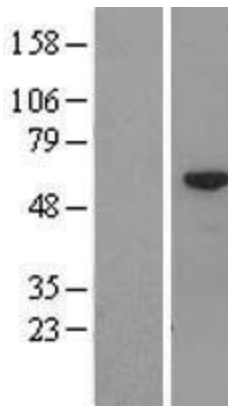
MW: 61.8 kDa

Gene Summary: This gene belongs to the CFAP53 family. It was found to be differentially expressed by the ciliated cells of frog epidermis and in skin fibroblasts from human. Mutations in this gene are associated with visceral heterotaxy-6, which implicates this gene in determination of left-right asymmetric patterning. [provided by RefSeq, Aug 2015]

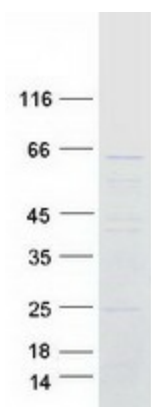
Product images:



Circular map for RC205529



Western blot validation of overexpression lysate (Cat# [LY408082]) using anti-DDK antibody (Cat# [TA50011-100]). Left: Cell lysates from untransfected HEK293T cells; Right: Cell lysates from HEK293T cells transfected with RC205529 using transfection reagent MegaTran 2.0 (Cat# [TT210002]).



Coomassie blue staining of purified CFAP53 protein (Cat# [TP305529]). The protein was produced from HEK293T cells transfected with CFAP53 cDNA clone (Cat# RC205529) using MegaTran 2.0 (Cat# [TT210002]).