

Product datasheet for **RC205528**

TSGA10 (NM_025244) Human Tagged ORF Clone

Product data:

Product Type:	Expression Plasmids
Product Name:	TSGA10 (NM_025244) Human Tagged ORF Clone
Tag:	Myc-DDK
Symbol:	TSGA10
Synonyms:	CEP4L; CT79; SPGF26
Mammalian Cell Selection:	Neomycin
Vector:	pCMV6-Entry (PS100001)
E. coli Selection:	Kanamycin (25 ug/mL)



[View online »](#)

ORF Nucleotide Sequence:

>RC205528 ORF sequence
 Red=Cloning site Blue=ORF Green=Tags(s)

TTTTGTAATACGACTCACTATAGGGCGGCCGGGAATTCGTGCGACTGGATCCGGTACCGAGGAGATCTGCC
 GCC**CGCATCGCC**

ATGATCGGAAGTAGGTCTAAAAGTCCAAGACGCCCATCACCAACTGCCCGGGTGCAAACGTGTGATGTAG
 AACTTTTGAAGACAACAACAAGAGATCGTGAAGAACTTAAATGCATGCTGGAAAAATATGAGCGCCATTT
 GGCAGAAATTCAGGGTAATGTCAAGTTCTTAAATCTGAGAGAGACAAGATCTTCTCTTTATGAACAG
 GCACAGGAAGAAATTACCCGACTTCGACGAGAAATGATGAAAAGCTGTAAGAGTCTAAATCAACAACGG
 CACATGCTATTCTCCGGCGAGTGGAGACTGAAAGAGATGTAGCCTTTACTGATTTACGAAGAATGACCAC
 AGAACGAGATAGTCTAAGGGAGAGGCTAAAGATTGCTCAAGAGACAGCATTTAATGAGAAGGCTCACCTG
 GAACAAAGGATAGAGGAGCTGGAGTGTACAGTTCATAATCTTGATGATGAACGTATGGAGCAAATGTCAA
 ATATGACTTTGATGAAGGAAACCATAAGCACTGTGAAAAAGAAATGAAATCACTAGCAAGAAAGGCAAT
 GGATACCGAAAGTGAAC TTGGCAGACAAAAAGCAGAGAATAATTCTTTGAGACTTTTGTATGAAAACACA
 GAAAAAGATCTTTCTGATCTCAGCGACACCTTGCTAAGAAAAATATGAGCTACAGTTACTCAGGAGA
 AATTATGTGCTTGATGAAAAATTGATAACTTTACAAGGCAAAATATTGCACAGCGAGAAGAAATCAG
 CATTCTTGGTGGAAACCCTCAATGATCTGGCTAAAGAAAAGGAATGCATGCAAGCATGTTTGGATAAAAA
 TCTGAGAATATTGCATCCCTTGGAGAGAGTTTGGCAATGAAAGAAAAGACCATTTTCAGGCATGAAGAATA
 TCATTGCTGAGATGGAACAGGCATCAAGACAGTGTACTGAGGCCCTAATTGTGTGTGAACAAGACGTTTC
 CAGAAATGCGTCCGCAATTGGATGAGACAAATGATGAGCTGGCCAGATCGCCAGGGAAAGAGATATCTTG
 GCTCATGACAATGACAATCTCCAGGAACAGTTTGTCTAAAGCTAAACAAGAAAACCAGGCACTGTCCAAAA
 AATTGAATGACACTCATAATGAACTTAAATGACATAAAACAGAAGTTCAAGATACTAATTTGGAGTTAA
 CAAGCTGAAGAATATATTAAGTCTGAAGAATCTGAGAACCAGCAATGATGGAACAACCTCGAAAAGCC
 AATGAAGATGCTGAAAAC TGGGAAAATAAAGCCCGTCAATCAGAGGCAGATAACAATACCCTCAAAC TGG
 AACTTATCACTGCTGAGGCAGAGGGTAACAGATTTAAAAGAAAAGTAGATTCCCTCAACAGAGAGGTTGA
 GCAACACTTAAATGCAGAAAGTCTTACAAGTCCAGATTTCTACCTTACATAAACTGTTGTA AAAATG
 GAAGAGGAGCTTCAGAAGGTT CAGTTTAAAAAGTGTCCGCTCTTGCAGATTTGTCTTACTAGGGAAC
 TCTGTATTAAC TTAGCTCAAGCAAAGA ACTTCTTAATCGACAGCTGGTTGCTAAAGATCAAGAAATAGA
 AATGAGGGAGAATGAGTTAGATTCTGCTCATTCTGAAATTGAACTCCTGAGGAGTCAGATGGCAAATGAG
 AGAATCTCCATGCAGAATCTAGAAGCTTTGCTGGTGGCCAATCGAGACAAAGAATATCAGTCTCAGATAG
 CACTTCAAGAAAAGAATCTGAAATTCAGCTTCTTAAAGAACACCTTTGTTTGGCAGAAAATAAAATGGC
 CATCCAGAGTAGAGATGTGGCCAGTTCAGAAATGTTGTACACAATTGGAAGCTGATTTAGACATTACC
 AAAAGACA ACTAGGAACAGAGCGCTTTGAAAGGGAGAGGGCCGTACAAGA ACTTCGCCGCCAAAAT TATT
 CAAGTAATGCTTATCATATGAGTTCTACAATGAAGCCAAATACAAAATGTCAATCACCAGAACGTGCTCA
 CCATCGATCTCTGACCGAGGCCTAGATCGATCATTAGAAGAGAATCTTTGCTACAGAGATTTTC

ACGCGTACGCGGCCGCTCGAGCAGAACTCATCTCAGAAGAGGATCTGGCAGCAAATGATATCCTGGATT
 ACAAGGATGACGACGATAAGGTTTAA

Protein Sequence: >RC205528 protein sequence
Red=Cloning site Green=Tags(s)

MMRSRSKSPRRPSPTARGANCDVELLKTTRDREELKCMLEKYERHLAEIQGNVVLKSERDKIFLLYEQ
 AQEEITRLRREMMKSKSPKSTTAHAILRRVETERDVAFTDLRRMTTERDSLRELRKIAQETAFAFNEKAHL
 EQRIEELECTVHNLDDERMEQMSNMTLMKETISTVEKEMKSLARKAMDTSELGRQKAENNSLRLLYENT
 EKDLSDTQRHLAKKKYELQLTQEKIMCLDEKIDNFRQNIQAQREEISILGGTLNDLAKEKECMQACLDKK
 SENIASLGEGLAMKEKTI SGMKNI IAEMEQA SRQCTEALIVCEQDVSRMRRLQDETNDELAQIARERDIL
 AHDNDNLQE QFAKAKQENQALSKKLN DTHNELNDIKQKVQDTNLEVNKLNILKSEESENQMMELRKA
 NEDAENWENKARQSEADNNTLKLLEITAEAEGRNLKEKVDLSLNREVEQHLNAERSYKSQISTLHKS VVKM
 EEELQKVQFEKVSALADLSSTREL CIKLDSSKELLNRQLVAKDQEIEMRENELDSAHSIELLRSQMANE
 RISMQNLEALLVANRDKEYQSQIALQEKESEIQLLKEHLCLAENKMAIQSRDVAQFRNVVTQLEADLDIT
 KRQLGTERFERERAVQELRRQNYSSNAYHMSSTMKPNTKCHSPERAHHRSPDRGLDRSLEENLCYRDF

TRTRPLEQKLISEEDLAANDILDYKDDDDKV

Chromatograms: https://cdn.origene.com/chromatograms/mk6695_d01.zip

Restriction Sites: SgfI-MluI

Cloning Scheme:



ACCN: NM_025244

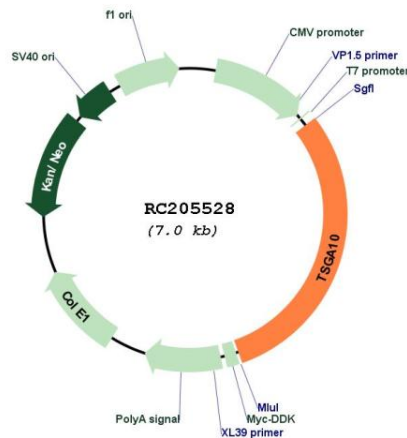
ORF Size: 2094 bp

OTI Disclaimer: The molecular sequence of this clone aligns with the gene accession number as a point of reference only. However, individual transcript sequences of the same gene can differ through naturally occurring variations (e.g. polymorphisms), each with its own valid existence. This clone is substantially in agreement with the reference, but a complete review of all prevailing variants is recommended prior to use. [More info](#)

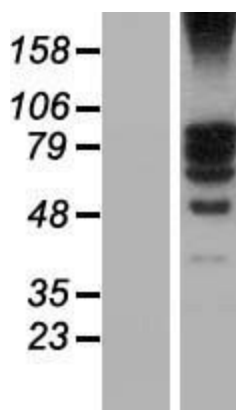
OTI Annotation: This clone was engineered to express the complete ORF with an expression tag. Expression varies depending on the nature of the gene.

- Components:** The ORF clone is ion-exchange column purified and shipped in a 2D barcoded Matrix tube containing 10ug of transfection-ready, dried plasmid DNA (reconstitute with 100 ul of water).
- Reconstitution Method:**
1. Centrifuge at 5,000xg for 5min.
 2. Carefully open the tube and add 100ul of sterile water to dissolve the DNA.
 3. Close the tube and incubate for 10 minutes at room temperature.
 4. Briefly vortex the tube and then do a quick spin (less than 5000xg) to concentrate the liquid at the bottom.
 5. Store the suspended plasmid at -20°C. The DNA is stable for at least one year from date of shipping when stored at -20°C.
- Note:** Plasmids are not sterile. For experiments where strict sterility is required, filtration with 0.22um filter is required.
- RefSeq:** [NM_025244.4](#)
- RefSeq Size:** 3685 bp
- RefSeq ORF:** 2097 bp
- Locus ID:** 80705
- UniProt ID:** [Q9BZW7](#)
- Cytogenetics:** 2q11.2
- MW:** 81.4 kDa
- Gene Summary:** Plays a role in spermatogenesis (PubMed:28905369). When overexpressed, prevents nuclear localization of HIF1A (By similarity).[UniProtKB/Swiss-Prot Function]

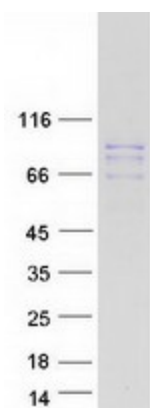
Product images:



Circular map for RC205528



Western blot validation of overexpression lysate (Cat# [LY405325]) using anti-DDK antibody (Cat# [TA50011-100]). Left: Cell lysates from untransfected HEK293T cells; Right: Cell lysates from HEK293T cells transfected with [RC219495] using transfection reagent MegaTran 2.0 (Cat# [TT210002]).



Coomassie blue staining of purified TSGA10 protein (Cat# [TP305528]). The protein was produced from HEK293T cells transfected with TSGA10 cDNA clone (Cat# RC205528) using MegaTran 2.0 (Cat# [TT210002]).