

## Product datasheet for **RC205527**

### SHCBP1 (NM\_024745) Human Tagged ORF Clone

#### Product data:

Product Type:	Expression Plasmids
Product Name:	SHCBP1 (NM_024745) Human Tagged ORF Clone
Tag:	Myc-DDK
Symbol:	SHCBP1
Synonyms:	PAL
Mammalian Cell Selection:	Neomycin
Vector:	pCMV6-Entry (PS100001)
E. coli Selection:	Kanamycin (25 ug/mL)



[View online »](#)

ORF Nucleotide  
Sequence:

>RC205527 ORF sequence  
Red=Cloning site Blue=ORF Green=Tags(s)

TTTTGTAATACGACTCACTATAGGGCGGCCGGGAATTCGTCGACTGGATCCGGTACCGAGGAGATCTGCC  
GCCGCGATCGCC

ATGGCTGACGGGTCGCTGACGGGCGCGGTCTGGAGGCAGCGCCATGGCGCCGAGCGCACGGGCTGGG  
CGGTGGAGCAGGAGCTGGCGTCTCTGGAGAAAGGTTTGTTCGAAGATGAAGATTCATGCAGTGATTGTAG  
CTACCGTGATAAACACAGTTCTAGTTTACAAAGTTTTATGCCAGAAGGAAAAACCTTTTTCCAGAAATT  
TTCCAAACAAATCAACTTTTGTCTATGAGCGATTGAGAGCCTATCAAGATTACATTTTAGCTGACTGCA  
AGGCTCTGAGGTACAGGAATTCACAGCTGAGTCTTGGAGAAGGTCCTTGGCCATCTGGATGGCGGGC  
AGTCTGGCACACTAATGTGTTCAAGGTGCTGGTTGAGATCACAGATGTGGACTTTGCAGCCTTGAAGGCA  
GTGGTGAGGCTTGCTGAACCATACCTCTGTGACTCTCAAGTGAGCACTTTTACCATGGAGTGCATGAAGG  
AGCTCCTTGATCTGAAGGAGCATCGGTTGCCCTGCAGGAGCTGTGGTGGTGTGTTGATGATTCAGGAGT  
GTTTGACCAGACAGCCCTTGAATTGAGCATGTCAGATTTTTCTACCAAAACATTTGGAGGAGTTGGGAT  
GAAGAAGAGGAGGATGAATACGATTATTTGTGATGTTGAACTCGATTAAGATTGCATTATGACA  
TTCTTGAAGACCGAGTTCATCAGGACTTATTGTTGACTACCACAATCTGTTGTCTCAATGTGAGGAGAG  
TTACAGGAAATTTTTAAATCTGAGAAGCAGTTTGTCAAATGTAAGTCTGATTCCGAGCAGGAAATATC  
TCCATGGTGAAGGGTAAAAATTGATTCGGAGATGGAACAGTTGAAACAAAAGCTGAAACTCATTGAGA  
ATCCTTTGTTGAGGTATGTGTTGGTTATCAGAAGAATTCACATCCAAGCAAAGGGTGTCCGTTCCAG  
CGGTGAGAAGATCACTCATGTGGTCTCCTCCACCATGATGGTGGTCTCCTGCGGTCCTGCTTACGGAC  
AGGCTTTGCCAGGAGCCTGGTGAGGAAGAAAGAAAATTCAGTTCCATAGTGATCCATTGTCTGTATAA  
ATGCCTGCTTCGAAGGTGACACTGTTATTGTTTGTCTGGCCATTATGTGGTACATGGCACTTTCTCCAT  
TGCTGACTCCATTGAGTTGGAAGGATATGGCCTACCAGATGACATTGTGATAGAAAAGAGGGGCAAAGGC  
GACACTTTTGTGGACTGCACTGGTGTGATATTAATCTCAGGCATAAAATTTGTTTCCAGCATGATGCTG  
TAGAGGGAATCTTAATTGTTTCCCGTGGTAAGACTACGCTGGAAGTGTGTGCTGCAGTGTGAGACGAC  
CGGAGTCACAGTGCGGACATCAGCAGAGTTTCTAATGAAGAACTCGGATTTATATGGCGCAAGGGTGT  
GGTATAGAAATCTACCCTGGGAGTCAGTGCACCCTGAGTGACAATGGGATCCATCACTGCAAGGAAGGGA  
TCCTCATTAAAGGACTTCTAGATGAACATTATGACATCCCAAGATATCCATGGTGAATAATATAATACA  
TAATAATGAAGGTTATGGTGTGCTTGGTGAACCTACAATCTTCTGACCTGCAAGAAAGTGTGAA  
GATGGAAGTGAAGAAAATAAGCGCTTAAAATTCAGACAAGTGGAGAGCCAGATGTGGCTGAAAGAGTGG  
ATCTAGAAGAGCTGATTGAGTGTCAACTGGTAAAATGGAGCTTTGTGCAAGAACTGACCCTTCTGAGCA  
AGTCGAGGGAAATGTGAAATGTAATGAACTAATTGCTGCCTCCACACAGAAAGGCCAGATAAAGAAG  
AAAAGGTTGAGTGAAGTGGGATCACGCAAGCTGATGACAACCTAATGTACAGGAGATGTTTGTGGGA  
TTGTGGGGAACCGATTCAAGTGAATGGAAAGGTAGTTTTGGCACATTTCTTTTC

ACGCGTACGCGGCCGCTCGAGCAGAACTCATCTCAGAAGAGGATCTGGCAGCAATGATATCCTGGATT  
ACAAGGATGACGACGATAAGGTTTAA

**Protein Sequence:** >RC205527 protein sequence  
Red=Cloning site Green=Tags(s)

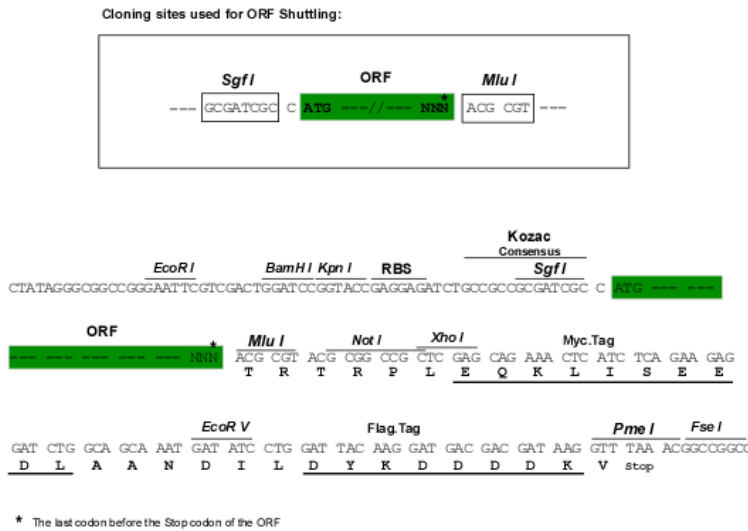
MADGSL TGGGLEAAAMAPERTGWAVEQELASLEKGLFQDESDSCDCSYRDKPGSSLSQSFMPGKTFPPEI  
 FQTNQLLFYERFRAYQDYLADCKASEVQEFTAFLKLVLEPSGWRVWHTNVFKVLVEITDVF AALKA  
 VVRLAEPYL CDSQVSTFTMECKELLDLKEHRLPLQELWVVFDDSGVFDQTALAIHVRRFFYQNIWRSWD  
 EEEEEYDYFVRCVEPRLRLHYDILED RVP SGLIVDYHNLLSQCEESYRKFLNLRSSL SNCNSDSEQENI  
 SMVEGLKLYSEMEQLKQKLKLIENPLLRYVFGYQKNSNIQAKGVRSSGQKITHVVSSTMMAGLLRSLT  
 RLCQEPGEEEREIQFHS DPLSAINACFEGDTVIVCPGHYVHGTFSIADSI ELEGYGLPDDIVIEKRGK  
 DTFVDCTGADIKISGIKFVQHDAVEGILIVHRGKTTLENCVLQCETTGTVRTSAEFLMKNSDLYGAKGA  
 GIEIYPGSQCTLSDNGIHHCKEGILIKDFLDEHYDIPKISMVNNIIHNNEG YGVVLVKPTIFSDLQESAE  
 DGTEENKALKIQTSGE PDVAERVDLEELIECATGKMELCARTDPSEQVEGNCEIVNELIAASTQKGQIKK  
 KRLSELGITQADDNLSQEMFVGIVGNQFKWNGKGSFGTFLF

TRTRPLEQKLISEEDLAANDILDYKDDDDKV

**Chromatograms:** [https://cdn.origene.com/chromatograms/mk6316\\_f04.zip](https://cdn.origene.com/chromatograms/mk6316_f04.zip)

**Restriction Sites:** SgfI-MluI

**Cloning Scheme:**



**ACCN:** NM\_024745

**ORF Size:** 2016 bp

**OTI Disclaimer:** The molecular sequence of this clone aligns with the gene accession number as a point of reference only. However, individual transcript sequences of the same gene can differ through naturally occurring variations (e.g. polymorphisms), each with its own valid existence. This clone is substantially in agreement with the reference, but a complete review of all prevailing variants is recommended prior to use. [More info](#)

**OTI Annotation:** This clone was engineered to express the complete ORF with an expression tag. Expression varies depending on the nature of the gene.

**Components:** The ORF clone is ion-exchange column purified and shipped in a 2D barcoded Matrix tube containing 10ug of transfection-ready, dried plasmid DNA (reconstitute with 100 ul of water).

**Reconstitution Method:**

1. Centrifuge at 5,000xg for 5min.
2. Carefully open the tube and add 100ul of sterile water to dissolve the DNA.
3. Close the tube and incubate for 10 minutes at room temperature.
4. Briefly vortex the tube and then do a quick spin (less than 5000xg) to concentrate the liquid at the bottom.
5. Store the suspended plasmid at -20°C. The DNA is stable for at least one year from date of shipping when stored at -20°C.

**RefSeq:** [NM\\_024745.3](#)

**RefSeq Size:** 3249 bp

**RefSeq ORF:** 2019 bp

**Locus ID:** 79801

**UniProt ID:** [Q8NEM2](#)

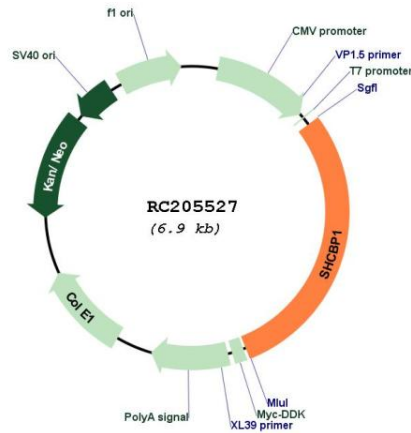
**Cytogenetics:** 16q11.2

**Domains:** PbH1

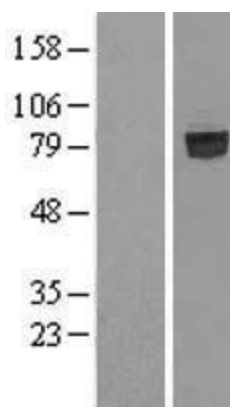
**MW:** 75.6 kDa

**Gene Summary:** May play a role in signaling pathways governing cellular proliferation, cell growth and differentiation. May be a component of a novel signaling pathway downstream of Shc. Acts as a positive regulator of FGF signaling in neural progenitor cells.[UniProtKB/Swiss-Prot Function]

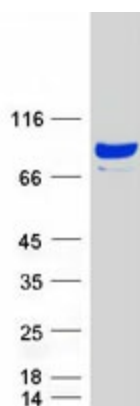
**Product images:**



Circular map for RC205527



Western blot validation of overexpression lysate (Cat# [LY411097]) using anti-DDK antibody (Cat# [TA50011-100]). Left: Cell lysates from untransfected HEK293T cells; Right: Cell lysates from HEK293T cells transfected with RC205527 using transfection reagent MegaTran 2.0 (Cat# [TT210002]).



Coomassie blue staining of purified SHCBP1 protein (Cat# [TP305527]). The protein was produced from HEK293T cells transfected with SHCBP1 cDNA clone (Cat# RC205527) using MegaTran 2.0 (Cat# [TT210002]).