

Product datasheet for **RC205525**

CLM 9 (CD300LG) (NM_145273) Human Tagged ORF Clone

Product data:

Product Type:	Expression Plasmids
Product Name:	CLM 9 (CD300LG) (NM_145273) Human Tagged ORF Clone
Tag:	Myc-DDK
Symbol:	CLM 9
Synonyms:	CLM-9; CLM9; NEPMUCIN; TREM-4; TREM4
Mammalian Cell Selection:	Neomycin
Vector:	pCMV6-Entry (PS100001)
E. coli Selection:	Kanamycin (25 ug/mL)
ORF Nucleotide Sequence:	>RC205525 ORF sequence Red=Cloning site Blue=ORF Green=Tags(s)

TTTTGTAATACGACTCACTATAGGGCGGCCGGAATTCGTCGACTGGATCCGGTACCGAGGAGATCTGCC
GCC**CGATCGCC**

ATGCGGCTTCTGGTCTGCTATGGGGTTGCCTGCTGCTCCAGGTTATGAAGCCCTGGAGGGCCAGAGG
AAATCAGCGGGTTCGAAGGGGACACTGTGTCCCTGCAGTGCACCTACAGGGAAGAGCTGAGGGACCACCG
GAAGTACTGGTGCAGGAAGGGTGGGATCCTTCTCTCGCTGCTTGGCACCATCTATGCAGAAGAAGAA
GGCCAGGAGACAATGAAGGGCAGGGTGTCCATCCGTGACAGCCGCCAGGAGCTCTCGCTCATTGTGACCC
TGTGGAACCTCACCTGCAAGACGCTGGGGAGTACTGGTGTGGGGTCGAAAACGGGGCCCCGATGAGTC
TTTACTGATCTCTGTTTCGCTTTCCAGGACCCTGCTGTCTCCCTCCCCTTCTCCACCTTCCAGCCT
CTGGCTACAACACGCCTGCAGCCCAAGGCAAAAGCTCAGCAAACCCAGCCCCAGGATTGACTTCTCCTG
GGCTTACCCGGCAGCCACCACAGCCAAGCAGGGGAAGACAGGGGCTGAGGCCCTCCATTGCCAGGGAC
TCCCAGTACGGGCACGAAAGGACTTCTCAGTACACAGGAACCTCTCCTCACCCAGCGACCTCTCCTCCT
GCAGGGAGCTCCCGCCCCCATGCAGCTGAACTCCACCTCAGCAGAGGACACCAGTCCAGCTCTCAGCA
GTGGCAGCTCTAAGCCCAGGGTGTCCATCCCGATGGTCCGCACTACTGGCCCCAGTCTGGTGTGCTGAG
CCTTCTGTGAGCCGAGGCTGATCGCCTTCTGCAGCCACCTGCTCCTGTGGAGAAAGGAAGCTCAACAG
GCCACGGAGACACAGAGGAACGAGAAGTTCTGCCTCTCACGCTTGACTGCGGAGGAAAAGGAAGCCCTT
CCAGGCCCTGAGGGGGACGTGATCTCGATGCCTCCCCTCCACACATCTGAGGAGGAGCTGGGCTTCTC
GAAGTTTGTCTCAGCG

ACGCGTACGCGGCCGCTCGAGCAGAAACTCATCTCAGAAGAGGATCTGGCAGCAAATGATATCCTGGATT
ACAAGGATGACGACGATAAGGTTTAA



[View online »](#)

Protein Sequence: >RC205525 protein sequence
Red=Cloning site Green=Tags(s)

MRLLVLLWGCLLLPGYEALEGPPEISGFEGD TVSLQCTYREELRDHRKYWCRKGGILFSRCSGTIYAE
 EQETMKGRVSIIRDSRQELSLIVTLWNLTLQDAGEYWCVEKRGPDSELLISL FVFPGCCPPSPSPTFQP
 LATTRLQPKAKAQQTQPPGLTSPGLYPAATTAKQKGTGAEAPPLPGTSQYGHERTSQYTGTS
 PHPATSPAGSSRPPMQLNSTSAEDTSPALSSGSSKPRVSIIPMVRILAPVLLSLLSAAGLIAFC
 SHLLLWRKEAQQATETQRNEKFCLSRLTAEKEAPSQAPEGDVISMPPLHTSEEELGFSKFVSA

TRTRPLEQKLISEEDLAANDILDYKDDDDKV

Chromatograms: https://cdn.origene.com/chromatograms/mk6315_c05.zip

Restriction Sites: SgfI-MluI

Cloning Scheme:



ACCN: NM_145273

ORF Size: 996 bp

OTI Disclaimer: The molecular sequence of this clone aligns with the gene accession number as a point of reference only. However, individual transcript sequences of the same gene can differ through naturally occurring variations (e.g. polymorphisms), each with its own valid existence. This clone is substantially in agreement with the reference, but a complete review of all prevailing variants is recommended prior to use. [More info](#)

OTI Annotation: This clone was engineered to express the complete ORF with an expression tag. Expression varies depending on the nature of the gene.

Components: The ORF clone is ion-exchange column purified and shipped in a 2D barcoded Matrix tube containing 10ug of transfection-ready, dried plasmid DNA (reconstitute with 100 ul of water).

Reconstitution Method:

1. Centrifuge at 5,000xg for 5min.
2. Carefully open the tube and add 100ul of sterile water to dissolve the DNA.
3. Close the tube and incubate for 10 minutes at room temperature.
4. Briefly vortex the tube and then do a quick spin (less than 5000xg) to concentrate the liquid at the bottom.
5. Store the suspended plasmid at -20°C. The DNA is stable for at least one year from date of shipping when stored at -20°C.

Note: Plasmids are not sterile. For experiments where strict sterility is required, filtration with 0.22um filter is required.

RefSeq: [NM_145273.2](#), [NP_660316.1](#)

RefSeq Size: 2799 bp

RefSeq ORF: 999 bp

Locus ID: 146894

UniProt ID: [Q6UXG3](#)

Cytogenetics: 17q21.31

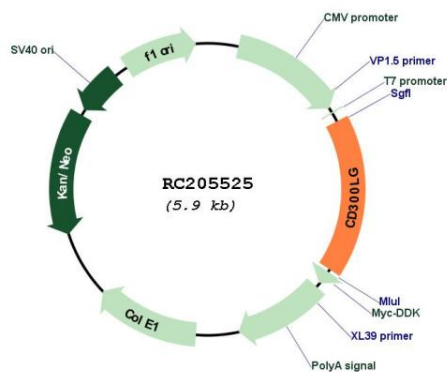
Domains: ig, IG

Protein Families: Druggable Genome, Transmembrane

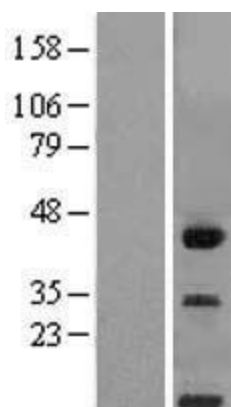
MW: 36.1 kDa

Gene Summary: Members of the CD300 (see MIM 606786)-like (CD300L) family, such as CD300LG, are widely expressed on hematopoietic cells. All CD300L proteins are type I cell surface glycoproteins that contain a single immunoglobulin (Ig) V-like domain (Takatsu et al., 2006 [PubMed 16876123]).[supplied by OMIM, Mar 2008]

Product images:



Circular map for RC205525



Western blot validation of overexpression lysate (Cat# [LY407998]) using anti-DDK antibody (Cat# [TA50011-100]). Left: Cell lysates from untransfected HEK293T cells; Right: Cell lysates from HEK293T cells transfected with RC205525 using transfection reagent MegaTran 2.0 (Cat# [TT210002]).