

Product datasheet for **RC205518**

C2orf65 (M1AP) (NM_138804) Human Tagged ORF Clone

Product data:

Product Type:	Expression Plasmids
Product Name:	C2orf65 (M1AP) (NM_138804) Human Tagged ORF Clone
Tag:	Myc-DDK
Symbol:	C2orf65
Synonyms:	C2orf65; D6Mm5e; SPATA37; SPGF48
Mammalian Cell Selection:	Neomycin
Vector:	pCMV6-Entry (PS100001)
E. coli Selection:	Kanamycin (25 ug/mL)



[View online »](#)

ORF Nucleotide Sequence:

>RC205518 ORF sequence
 Red=Cloning site Blue=ORF Green=Tags(s)

TTTTGTAATACGACTCACTATAGGGCGGCCGGGAATTCGTCGACTGGATCCGGTACCGAGGAGATCTGCC
 GCC**GCGATCGCC**

ATGCATCCTGGGCGAACTACTGGTAAAGGGCCCTCTACTCACACTCAGATTGACCAGCAACCTCCACGGC
 TTCTCATTGTGCACATTGCTCTACCGTCCCTGGGCTGACATCTGCACCAACCTCTGTGAGGCTCTGCAGAA
 CTTCTTCTCTAGCCTGCAGCTTGATGGGCCCCAGCCGATGTCCCTGTTCAAGTTTATACATGGTACAA
 GATCAGCATGAGTGCATCCTCCCTTTTGTGCAAGTCAAAGGGAACCTTTGCTAGGTTGCAGACCTGCATCT
 CAGAACTCCGCATGTTACAGAGAGAAGGGTGTTCAGATCACAAGGTGCTTCTCTGCGGCTGGCAGTAGA
 GGATGGGCTCCAGCAATCAAACAATACAGCAGACATGTGACCACAAGGGCAGCTCTGACCTATACCTCC
 CTGGAGATTACTATTCTGACTTCTCAGCCTGGAAAAGAGGTGGTCAAACAGTTGGAGGAAGGGTTGAAAG
 ATACAGACCTAGCCAGAGTCAGGAGTTTCAGGTCGTTGAGGTCAAAGGGAATCTAGAGCACGTGGA
 CTCAGCGTCTCCTGTTGAGGATACCAGCAATGATGAGAGTTCTATTCTGGAACTGACATTGACCTTCAG
 ACTATAGACAATGATATCGTCAGCATGGAGATTTCTTCAAAGCCTGGCTACATAACAGTGGAACAGACC
 AAGAACAATCCATCTTCTTCTTCTTTCACAGTGTTCAGCAACATTTCCAGACCCAGAGATAATCCAAT
 GTGTCTGAAATGTGATCTCCAAGAGCGACTGCTCTGCCATCCCTACTCGCTGGCACAGCTGACGGCTCC
 TTGAGAATGGATGACCCTAAAGGAGACTTCATCACACTTACCAGATGGCTTCCCAGTCATCGGCCCTCTC
 ATTACAAGCTCCAAGTGATCAAGGCTTTAAAATCTAGCGGGCTCTGCGAGTCATTGACATATGGACTCCC
 GTTCATCTCAGACCTACAAGCTGTTGGCAGCTGGACTGGGATGAGCTGGAGACAAATCAGCAACATTTCC
 CATGCTTTGTGTACAGCCTGCTGAAAAGGGAATGGCTGCTGTTAGCCAAGGGGGAACACCGGGCCAG
 GACACGCCAGAGAATTCCTGCCAGCACCTTCTATGTGATCATGCCGTCACACTCCCTCACACTGCTGGT
 AAAGGCGGTGGCCACGCGGGAACCTGATGCTGCCACAGCACCTTCCCCTGCTACCTGAGGACCCACATGAT
 GATAGCCTTAAGAATGTGGAGAGCATGCTGGACAGCCTGGAGCTGGAGCCACCTACAACCCTTGCATG
 TTCAAAGCCACCTGACTCACACCTGAGCAGCATCTATGCCAAGCCTCAGGGGCGGCTCCACCCACACTG
 GGAGAGCCGAGCTCCGAGAAAGCATCCCTGCAAGACTGGGCAAGTGCAGACCAACCGAGCTCGAGCTACT
 GTGGCCCCCTGCCTATGACTCCTGTCCAGGCAGAGCCTCCAAGATGCCAGCAGCCAGCAATCTTCTCT
 CAGATGCCTTCTCTGCCTTCAGAGTGGGAGAAGGATCCCTCAAGGCC

ACGCGTACGCGGCCGCTCGAGCAGAACTCATCTCAGAAGAGGATCTGGCAGCAAATGATATCCTGGATT
 ACAAGGATGACGACGATAAGGTTTAA

Protein Sequence:

>RC205518 protein sequence
 Red=Cloning site Green=Tags(s)

MHPGRRTTGKGPSTHTQIDQPPRLLIVHIALPSWADICTNLCEALQNFFSLACSLMGPSRMSLSFLYMVQ
 DQHECILPFVQVKGNFARLQTCISELRMLQREGCFRSQASLRLAVEDGLQQFKQYSRHVTTRAALTYTS
 LEITILTSQPGEVVKQLEEGLKDTDLARVRFQVVEVTKGILEHVDSASPVEDTSNDESSILGTDIDLQ
 TIDNDIVSMEIFFKAWLHNSGTDQEIQIHLLSSQCFSNISRPRDPMCLKCDLQERLLCPSLLAGTADGS
 LRMDDPKGDFITLYQMASQSSASHYKLVQIKALKSSGLCESLTYGLPFILRPTSCWQLDWELETNQHF
 HALCHSLLKREWLLAKGEPGPGHSQRIPASTFYVIMPSHSLTLLVKAVATREMLPSTFPLLPEDPHD
 DSLKNVESMLDSLELEPTYNPLHVQSHLYSHLSSIIYAKPQGRLLPHWESRAPRKHPCKTGQLQTNRARAT
 VAPLPMPVPGRASKMPAASKSSSDAFLPSEWEKDPSRP

TRTRPLEQKLISEEDLAANDILDYKDDDDKV

Chromatograms:

https://cdn.origene.com/chromatograms/mk6313_g01.zip

Restriction Sites:

SgfI-MluI

Cloning Scheme:


ACCN: NM_138804

ORF Size: 1590 bp

OTI Disclaimer: The molecular sequence of this clone aligns with the gene accession number as a point of reference only. However, individual transcript sequences of the same gene can differ through naturally occurring variations (e.g. polymorphisms), each with its own valid existence. This clone is substantially in agreement with the reference, but a complete review of all prevailing variants is recommended prior to use. [More info](#)

OTI Annotation: This clone was engineered to express the complete ORF with an expression tag. Expression varies depending on the nature of the gene.

Components: The ORF clone is ion-exchange column purified and shipped in a 2D barcoded Matrix tube containing 10ug of transfection-ready, dried plasmid DNA (reconstitute with 100 ul of water).

- Reconstitution Method:**
1. Centrifuge at 5,000xg for 5min.
 2. Carefully open the tube and add 100ul of sterile water to dissolve the DNA.
 3. Close the tube and incubate for 10 minutes at room temperature.
 4. Briefly vortex the tube and then do a quick spin (less than 5000xg) to concentrate the liquid at the bottom.
 5. Store the suspended plasmid at -20°C. The DNA is stable for at least one year from date of shipping when stored at -20°C.

RefSeq: [NM_138804.4](#)

RefSeq Size: 2558 bp

RefSeq ORF: 1593 bp

Locus ID: 130951

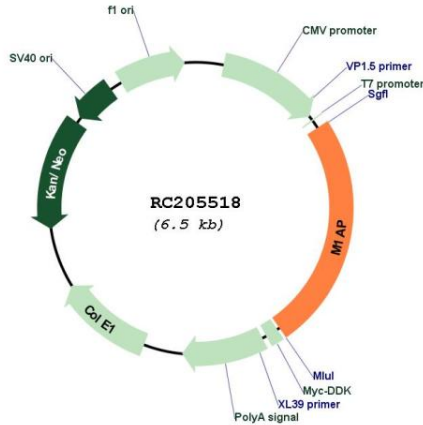
UniProt ID: [Q8TC57](#)

Cytogenetics: 2p13.1

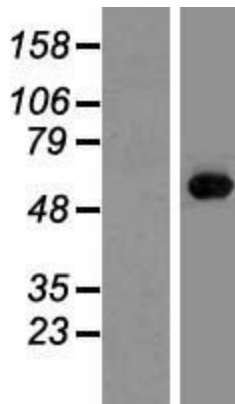
MW: 59.4 kDa

Gene Summary: This gene encodes a protein that is likely to function in progression of meiosis. A similar protein in mouse plays a role in gametogenesis in both sexes. Alternate splicing results in multiple transcript variants encoding different isoforms. [provided by RefSeq, Jul 2013]

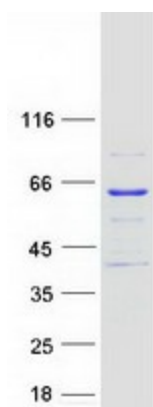
Product images:



Circular map for RC205518



Western blot validation of overexpression lysate (Cat# [LY408490]) using anti-DDK antibody (Cat# [TA50011-100]). Left: Cell lysates from untransfected HEK293T cells; Right: Cell lysates from HEK293T cells transfected with RC205518 using transfection reagent MegaTran 2.0 (Cat# [TT210002]).



Coomassie blue staining of purified M1AP protein (Cat# [TP305518]). The protein was produced from HEK293T cells transfected with M1AP cDNA clone (Cat# RC205518) using MegaTran 2.0 (Cat# [TT210002]).