

Product datasheet for RC205517

Methyltransferase like protein 10 (METTL10) (NM_212554) Human Tagged ORF Clone

Product data:

Product Type: Expression Plasmids
Product Name: Methyltransferase like protein 10 (METTL10) (NM_212554) Human Tagged ORF Clone
Tag: Myc-DDK
Symbol: Methyltransferase like protein 10
Synonyms: C10orf138; Efm4; METTL10
Mammalian Cell Selection: Neomycin
Vector: pCMV6-Entry (PS100001)
E. coli Selection: Kanamycin (25 ug/mL)
ORF Nucleotide Sequence: >RC205517 ORF sequence
 Red=Cloning site Blue=ORF Green=Tags(s)

TTTTGTAATACGACTCACTATAGGGCGGCCGGAATTCGTCGACTGGATCCGGTACCGAGGAGATCTGCC
 GCCCGCATCGCC

ATGAGCTCGGGCGCTGACGGCGCGGTGGCGCTGCGGTGGCGCGCGGTCCGACAAGGGCAGTCCCGGGG
 AGGACGGTTTCGTCGCGCTGGGACCCGCGAGCATTGGGATGCTGTCTATGAGAGAGAAGTCA
 AACTTTCCGAGAATATGGAGATACAGGTGAAATCTGGTTGGAGAAGAGAGTATGAATCGACTAATAAGG
 TGGATGCAGAAACACAAGATTCCACTGGATGCTTCAGTCTTATGATTGAACTGGAATGGTGTTCCTC
 TGTTGAACTTGAAAATTTGGTTTCTCTAATATTACTGGAATTGATTACTCTCCTTCTGCAATTCAGCT
 TTCTGGAAGTATTATAGAAAAGAAGGTTTATCTAACATTAAGTTAAAGGTAGAAGACTTTTTGAATCTC
 TCCACACAGCTGTCTGGATTTTATATTTGATTGACAAAGGGACTTTTGTATGCCATAAGCCTTAATCCTG
 ACAATGCAATTGAGAAGAGGAAGCAATATGTGAAATCTCTCCAGGGTGTGAAAGTAAAGGCTTTTT
 TTCTAATAACGTCATG

ACGCGTACGCGGCCGCTCGAGCAGAACTCATCTCAGAAGAGGATCTGGCAGCAATGATATCCTGGATT
 ACAAGGATGACGACGATAAGGTTTAA

Protein Sequence: >RC205517 protein sequence
 Red=Cloning site Green=Tags(s)

MSSGADGGGAAVAARSDKGSPGEDGFVPSALGTREHWDVYERELQTFREYGDTEIWFGEESMNLIR
 WMQKHKIPLDASVLDIGTGNGVFLVELAKFGFSNITGIDYSPSAIQLSGSIEKEGLSNIKLVKVEDFLNL
 STQLSGFHICIDKGFDAISLNPDNAIEKRKQYVKSLSRVLKVKGFFSNNVM

TRTRPLEQKLISEEDLAANDILDYKDDDDKV



[View online »](#)

Chromatograms: https://cdn.origene.com/chromatograms/mk6313_c03.zip

Restriction Sites: SgfI-MluI

Cloning Scheme:



ACCN: NM_212554

ORF Size: 576 bp

OTI Disclaimer: The molecular sequence of this clone aligns with the gene accession number as a point of reference only. However, individual transcript sequences of the same gene can differ through naturally occurring variations (e.g. polymorphisms), each with its own valid existence. This clone is substantially in agreement with the reference, but a complete review of all prevailing variants is recommended prior to use. [More info](#)

OTI Annotation: This clone was engineered to express the complete ORF with an expression tag. Expression varies depending on the nature of the gene.

Components: The ORF clone is ion-exchange column purified and shipped in a 2D barcoded Matrix tube containing 10ug of transfection-ready, dried plasmid DNA (reconstitute with 100 ul of water).

Reconstitution Method:

1. Centrifuge at 5,000xg for 5min.
2. Carefully open the tube and add 100ul of sterile water to dissolve the DNA.
3. Close the tube and incubate for 10 minutes at room temperature.
4. Briefly vortex the tube and then do a quick spin (less than 5000xg) to concentrate the liquid at the bottom.
5. Store the suspended plasmid at -20°C. The DNA is stable for at least one year from date of shipping when stored at -20°C.

RefSeq: [NM_212554.1](#)

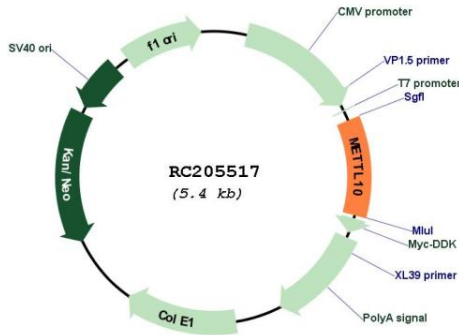
RefSeq Size: 2638 bp

RefSeq ORF: 876 bp

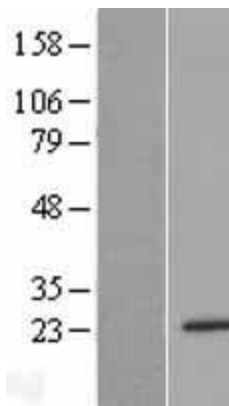
Locus ID: 399818

UniProt ID: [Q5JPI9](#)
 Cytogenetics: 10q26.13
 Protein Families: Druggable Genome
 MW: 21 kDa
 Gene Summary: Protein-lysine methyltransferase that selectively catalyzes the trimethylation of EEF1A at 'Lys-318'. [UniProtKB/Swiss-Prot Function]

Product images:



Circular map for RC205517



Western blot validation of overexpression lysate (Cat# [LY403897]) using anti-DDK antibody (Cat# [TA50011-100]). Left: Cell lysates from untransfected HEK293T cells; Right: Cell lysates from HEK293T cells transfected with RC205517 using transfection reagent MegaTran 2.0 (Cat# [TT210002]).