

Product datasheet for RC205514

TSP50 (PRSS50) (NM_013270) Human Tagged ORF Clone

Product data:

Product Type:	Expression Plasmids
Product Name:	TSP50 (PRSS50) (NM_013270) Human Tagged ORF Clone
Tag:	Myc-DDK
Symbol:	TSP50
Synonyms:	CT20; TSP50
Mammalian Cell Selection:	Neomycin
Vector:	pCMV6-Entry (PS100001)
E. coli Selection:	Kanamycin (25 ug/mL)
ORF Nucleotide Sequence:	>RC205514 ORF sequence Red=Cloning site Blue=ORF Green=Tags(s)

TTTTGTAATACGACTCACTATAGGGCGGCCGGAATTCGTCGACTGGATCCGGTACCGAGGAGATCTGCC
GCC**CGATCGCC**

ATGGGTCGCTGGTGCCAGACCGTCGCGCGGGCAGCGCCCCGGACGTCTGCCCTCCCAGCGCCGGTG
CCCTGCTGCTGCTGTTCTGTTGCTGAGGTCTGCAGGTTGCTGGGGCGCAGGGGAAGCCCCGGGGCGCT
GTCCACTGCTGATCCCGCCGACCAGAGCGTCCAGTGTGTCCCAAGGCCACCTGTCTCCAGCCGGCT
CGCCTTCTCTGGCAGACCCGACCACCCAGACACTGCCCTCGACCACCATGGAGACCCAATCCCAGTTT
CTGAAGGCAAAGTCGACCATAACCGCTCCTGTGGCTTTTCTACGAGCAGGACCCACCCTCAGGGACCC
AGAAGCCGTGGCTCGGGCGTGGCCCTGGATGGTACGCTGCGGGCCAATGGCACACACATCTGTGCCGGC
ACCATCATTGCCTCCCAGTGGGTGCTGACTGTGGCCCACTGCCTGATCTGGCGTGATGTTATCTACTCAG
TGAGGGTGGGGAGTCCGTGGATTGACCAGATGACGCAGACCGCCTCCGATGTCCCGGTGCTCCAGGTCAT
CATGCATAGCAGGTACCGGGCCAGCGTTCTGGTCTGGGTGGGCCAGGCCAACGACATCGGCCTCCTC
AAGCTCAAGCAGGAACCAAGTACAGCAATTACGTGCGGCCCATCTGCCTGCCTGGCAGGACTATGTGT
TGAAGGACCATCCCCTGCACTGTGACGGGTGGGACTTTCCAAGGCTGACGGCATGTGGCCTCAGTT
CCGGACCATTGAGGAGAAGGAAGTCAATCCTGAACAACAAAGAGTGTGACAATTTCTACCACAACCTC
ACCAAAATCCCCTCTGGTTCAGATCATCAAGTCCCAGATGATGTGCGGAGGACACCCACAGGGAGA
AGTTCTGCTATGAGCTAACTGGAGAGCCCTGGTCTGCTCCATGGAGGGCACGTGGTACCTGGTGGGATT
GGTGAGCTGGGGTGCAGGCTGCCAGAAGAGCGAGGCCCAACCATCTACCTACAGGTCTCCTCCTACCAA
CACTGGATCTGGGACTGCCTCAACGGGCAGGCCCTGGCCCTGCCAGCCCATCCAGGACCTGCTCCTGG
CACTCCCCTGCCCTCAGCCTCCTTGCTGCCCTC

ACGGTACGCGGCCGCTCGAGCAGAACTCATCTCAGAAGAGGATCTGGCAGCAATGATATCCTGGATT
ACAAGGATGACGACGATAAGGTTTAA



[View online »](#)

Protein Sequence: >RC205514 protein sequence
Red=Cloning site Green=Tags(s)

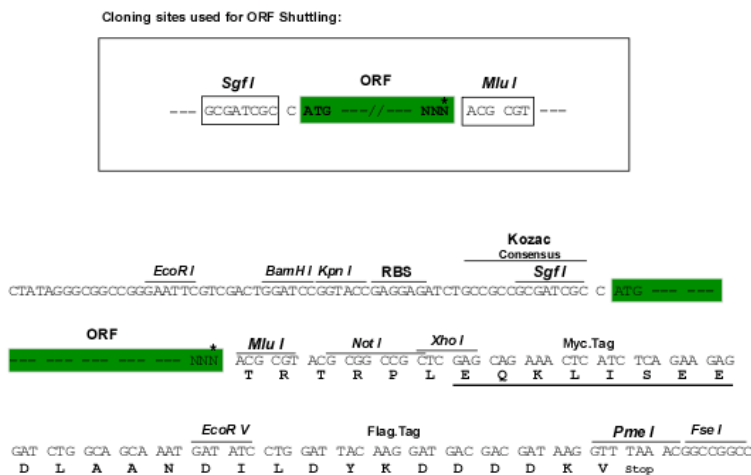
MGRWCQTVARGQRPRTSAPSRAGALLLLLLLLRSAGCWGAGEAPGALSTADPADQSVQCVKATCPSSRP
 RLLWQPTTQTLPTTMMETQFPVSEKVDPYRSCGFSYEQDPTLRDPEAVARRWPMMVSVRANGTHICAG
 TIIASQWLVTVAHCLIWRDVIYSVRVGSPIWDMQMTQASDVPVLQVIMHSRYRAQRFSWVGQANDIGLL
 KLKQELKYSNYVRPICLPGTDYVLKDHSRCTVTGWGLSKADGMWPQFRTIQEKEVILNNKECDNFYHNF
 TKIPTLVQIIKSMCAEDTHREKFCYELTQGEPLVCSMEGTWYLVGLVSWGAGCQKSEAPPIYLQVSSYQ
 HWIWDCLNGQALALPAPSRLLLLALPLLSLLAAL

TRTRPLEQKLISEEDLAANDILDYKDDDDKV

Chromatograms: https://cdn.origene.com/chromatograms/mk6027_f08.zip

Restriction Sites: SgfI-MluI

Cloning Scheme:



* The last codon before the Stop codon of the ORF

ACCN: NM_013270

ORF Size: 1155 bp

OTI Disclaimer: The molecular sequence of this clone aligns with the gene accession number as a point of reference only. However, individual transcript sequences of the same gene can differ through naturally occurring variations (e.g. polymorphisms), each with its own valid existence. This clone is substantially in agreement with the reference, but a complete review of all prevailing variants is recommended prior to use. [More info](#)

OTI Annotation: This clone was engineered to express the complete ORF with an expression tag. Expression varies depending on the nature of the gene.

Components: The ORF clone is ion-exchange column purified and shipped in a 2D barcoded Matrix tube containing 10ug of transfection-ready, dried plasmid DNA (reconstitute with 100 ul of water).

Reconstitution Method:

1. Centrifuge at 5,000xg for 5min.
2. Carefully open the tube and add 100ul of sterile water to dissolve the DNA.
3. Close the tube and incubate for 10 minutes at room temperature.
4. Briefly vortex the tube and then do a quick spin (less than 5000xg) to concentrate the liquid at the bottom.
5. Store the suspended plasmid at -20°C. The DNA is stable for at least one year from date of shipping when stored at -20°C.

RefSeq: [NM_013270.5](#)

RefSeq Size: 1363 bp

RefSeq ORF: 1158 bp

Locus ID: 29122

UniProt ID: [Q9UI38](#)

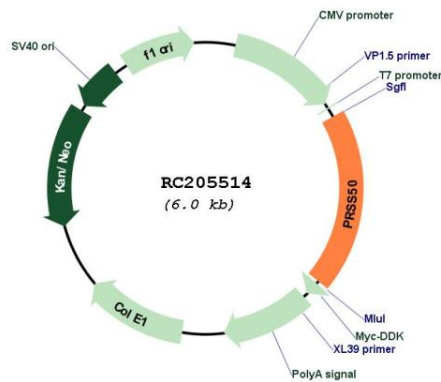
Cytogenetics: 3p21.31

Protein Families: Druggable Genome, Protease

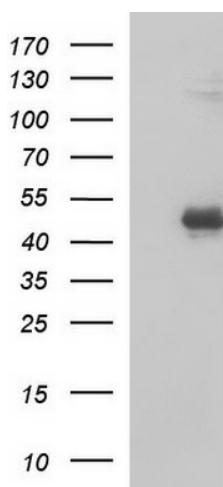
MW: 43.1 kDa

Gene Summary: May be involved in proteolysis through its threonine endopeptidase activity. [UniProtKB/Swiss-Prot Function]

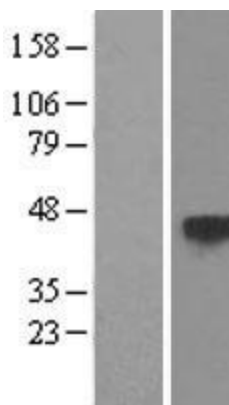
Product images:



Circular map for RC205514



HEK293T cells were transfected with the pCMV6-ENTRY control (Cat# [PS100001], Left lane) or pCMV6-ENTRY PRSS50 (Cat# RC205514, Right lane) cDNA for 48 hrs and lysed. Equivalent amounts of cell lysates (5 ug per lane) were separated by SDS-PAGE and immunoblotted with anti-PRSS5(Cat# [TA590243]). Positive lysates [LY402236] (100ug) and [LC402236] (20ug) can be purchased separately from OriGene.



Western blot validation of overexpression lysate (Cat# [LY402236]) using anti-DDK antibody (Cat# [TA50011-100]). Left: Cell lysates from untransfected HEK293T cells; Right: Cell lysates from HEK293T cells transfected with RC205514 using transfection reagent MegaTran 2.0 (Cat# [TT210002]).