

Product datasheet for **RC205512**

DIS3L2 (NM_152383) Human Tagged ORF Clone

Product data:

Product Type:	Expression Plasmids
Product Name:	DIS3L2 (NM_152383) Human Tagged ORF Clone
Tag:	Myc-DDK
Symbol:	DIS3L2
Synonyms:	FAM6A; hDIS3L2; PRLMNS
Mammalian Cell Selection:	Neomycin
Vector:	pCMV6-Entry (PS100001)
E. coli Selection:	Kanamycin (25 ug/mL)



[View online »](#)

ORF Nucleotide Sequence:

>RC205512 representing NM_152383
 Red=Cloning site Blue=ORF Green=Tags(s)

TTTTGTAATACGACTCACTATAGGGCGGCCGGAATTCGTCGACTGGATCCGGTACCGAGGAGATCTGCC
 GCC**CGCATCGCC**

ATGAGCCATCCTGACTACAGAATGAACCTCCGGCCCTGGGGACCCAGAGGTGTGTCTGCTGTGGCTG
 GTCCACATGACATTGGTCTTCGCCAGGTGACAAAAAGTCAAAGAACAGGTCCACACGAGGGAAGAAAA
 GAGCATATTTGAAACTTACATGTCCAAGGAGGATGTTTCAGAAGGCTTGAAGAGAGGAACACTCATCCAG
 GGTGTATTGAAATTAATCCAAAGAAGTTTCATGAAGCCTTCAATCCTTCCCGGATGGTATCGAGACA
 TTTTATTGATGGGGTTGTGCTCGTAATAGAGCCTTAAATGGGGATCTGGTGGTCTGAAACTGCTTCC
 CGAGGAGCATTGGAAGGTAGTTAAACCAGAGAGCAATGACAAAGAAACAGAAGCTGCGTATGAATCAGAT
 ATCCCGAGGAGCTCTGTGGACACCATCTCCGCAACAGTCCCTGAAAAGCTATAATGACAGTCTGATG
 TCATTGTAGAGGCTCAGTTTGTGGCAGCGACTCAGAAGATGGACATGGCATCACAAAAATGTGCTGGT
 TGATGGTGTAAAGAACTCTCAGTTTGTGTTTCTGAGAAAAGGAAGAGAGGATGGTATGCACCGGTTACA
 AAAGATGAGACCCTGCATTTACAAGACACAAGAGCTTTATCGGAGAAATCCCTGCAAAGATCAGCAA
 AGGTGGTTTACATCTTGGAGAAAAACATTCTCGAGCAGCAACCGGCTTCTCAAACCTTGGCTGATAA
 GAACAGCGAACTGTTTAGGAAATACGCCCTGTTTTCTCCCTCAGACCACCGAGTGCCTAGAATTTATGTG
 CCTCTCAAGGACTGTCCCAGGACTTTGTGGCAGCGCCTAAAGATTATGCCAACACACTGTTTATCTGCC
 GCATTGTGGACTGGAAGGAGGACTGCAATTTGCCCTGGGGCAGCTGGCTAAGAGTCTTGGGCAGGCTGG
 TGAAATTGAGCCTGAAACAGAAGGAATACTAACAGAGTATGGCGTGGATTCTCTGATTTCTTTCAGAA
 GTTCTAGAATGTCTTCTCAAGGCTGCCATGGACAATCCACCAGAGGAGTTCAGCAAGAAGAAGGGATT
 TAAGAAAAGACTGTATCTTACCATTGACCCATCAACCGCCGAGACCTCGATGATGCCCTCTCTGCAA
 GCCACTCGCTGACGGCAACTTCAAAGTGGGAGTTACATTGCTGACGTGAGTTACTTTGTTCCGGAGGGA
 TCTGATCTGGATAAAGTGGCTGCCGAGAGGGCTACAAGCGTCTACTTGGTTCAAAGGTGGTCCCATGC
 TTCCAGGCTGCTGTGTGAGGAGCTGTGCAGCCTCAACCCATGTCCGACAAGCTGACCTTCTGTGAT
 CTGGACACTGACTCCAGAGGGCAAGATCCTTGATGAATGGTTTGGCCGACCATCATCCGCTCTGCACC
 AAATTAGCTACGAGCATGCACAGAGCATGATTGAAAGCCCACTGAGAAAAATCCCTGCGAAAGAGCTGC
 CCCCCATTTCCCAGAGCATAGCAGCGAGGAGGTACACCAGGCCGCTTGAATCTCCACGGAATTGCCAA
 GCAGTTACGCCAGCAGCGCTTTGTGGACGGCGCACTTCGTTTGGATCAGCTAAAGCTTGGTTCACTCTG
 GACCACGAGACCGGATTGCTCAAGGATGTCATATCTATGAGTACCGCGAGAGCAACAAGCTCGTGGAGG
 AGTTCATGCTCTTGGCCAAACATGGCAGTGGCCACAAGATCCACCAGCGCCTTCCCGAGCAGGCCCTGCT
 GCGCCGGCACCCCGCCCAACAAGGATGCTCAGTGACCTGGTGAATTCTGCGACCAGATGGGGCTG
 CCCGTGGACTTACGCTCCGCAAGGAGCCCTCAATAAAAGCCTGACCCAAACATTTGGAGATGACAAGTACT
 CACTGGCCCGCAAGGAGGTGCTACCAACATGTGCTCCCGGCCATGCAGATGGCACTGTACTTCTGCTC
 GGGGCTGCTGCAGGACCCAGCGCAGTTCGGGCACTACGCGCTCAATGTGCCCTGTACACACACTTACC
 TCGCCATCCGCGCTTTGCCGACGTCTGGTGCACCGCCTCTGGTGGCCGCTTAGGCTATAGGGAGC
 GACTAGACATGGCGCCGATACCCTGCAGAAACAGGCGGACCCTGTAAACGACCGCCGATGGCGTCCAA
 GCGCGTGCAGGAGCTCAGTACCAGTCTCTTCTTGTCTGGTCAAGGAGAGTGGCCCTGGAGTCA
 GAAGCCATGGTGATGGGCATCCTGAAGCAAGCCTTCGACGTGCTGGTGTGCGCTACGGCGTGCAGAAGC
 GCATCTACTGCAACGCACTGGCCCTGCGGTCCCACCCTTCCAGAAGGTGGGCAAGAAGCCGGAACCTCAC
 GCTGGTCTGGGAGCCTGAGGACATGGAGCAGGAGCCAGCACAGCAGGTATCACCATCTTCAAGCCTGGT
 GAGGTGGTCTGCAGGCAGAGTCCACAGCCCTCAAGTACAGCGCCATCCTGAAGCGCCAGGCACCCAGG
 GCCACCTGGGCCCTGAGAAGGAGGAGGAGTCTGACGGTGGCCGAGGACTCAAGCACCAGC

ACGCGTACGCGGCCGCTCGAGCAGAACTCATCTCAGAAGAGGATCTGGCAGCAATGATATCTGGATT
 ACAAGGATGACGACGATAAGGTTTAA

Protein Sequence: >RC205512 representing NM_152383
 Red=Cloning site Green=Tags(s)

MSHPDYRMNLRPLGTPRGVS AVAGPHDIGASPGDKKSKNRSTRGKKKSI FETYMSKEDVSEGLKRGTLIQ
 GVL RINPKKFHEAFIPSPDGRDIFIDGVVARNRNLNGDLVVVKLLPEEHKWKVVPESNDKETEAAYESD
 IPEELCGHHL PQQSLKSYNDSPDVIVEAQFDGSDSEHGIGITQNVLVDGVKLSVCVSEKGREDDGAPVT
 KDETTCSIQDTRALSEKSLQRS AKVVYILEKKHSRAATGFLKLLADKNSELFRKYALFSPSDHRVPRIYV
 PLKDCPQDFVARPKDYANTLFCRIVDWKEDCNFALGQLAKSLGQAGEIEPETEGILTEYGVDFSDFSSE
 VLECLPQGLPWTIPPEEF SKRRDLRKDCIFTIDPSTARLDLDDAL SCKPLADGNFKVGVHIA DVSYFVPEG
 SDLDKVA AERATSVYLVQKVVPMLPRLLCEELCSLNPM SDKLTF SVIWL TPEGKILDEWFGR TII RST
 KLSYEAHQSMIESPTEKIPAKELPPISPEHSSEVHQAVLN LHGIAKQLRQRFVDGALRLDQLKLAFTL
 DHETGLPQGCHIYEYRESNKLVEEFMLLANMAVAHKIHRAPPEQALLRRHPPPQTRMLSDLVEFCDQMG
 L PVDFSSAGALNKSLTQTFGDDKYSLARKEVLTNMCSRPMQMALYFC SGLLQDPAQFRHYALNVPL YTHFT
 SPIRRFADVLVHRLLAALGYRERLDMAPDTLQKQADHCNDRRMASKRVQELSTSLFFAVLVKESGPLES
 EAMVMGILKQAFDVLVLRVGVQKRIYCNALALRSHHFQKVGKKPELTLVWEPEDMEQEP AQQVITIFSLV
 EVVLQAE STALKYSAILKRP GTQHLGPEKEEEEE SDGEPEDSSTS

TRTRPLEQKLISEEDLAANDILDYKDDDDKV

Chromatograms: https://cdn.origene.com/chromatograms/mk8025_f01.zip

Restriction Sites: SgfI-MluI

Cloning Scheme:

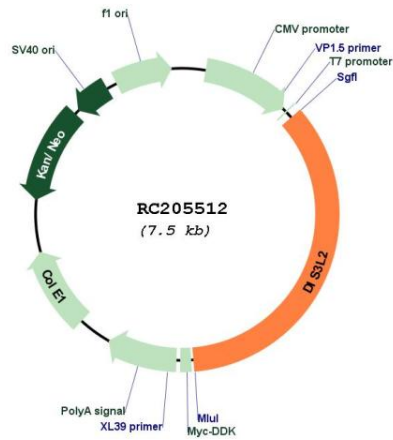
Cloning sites used for ORF Shuttling:



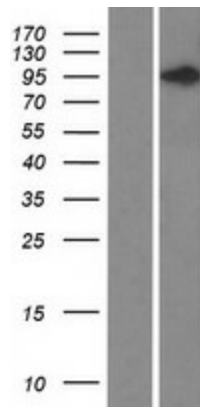
* The last codon before the Stop codon of the ORF

ACCN:	NM_152383
ORF Size:	2655 bp
OTI Disclaimer:	The molecular sequence of this clone aligns with the gene accession number as a point of reference only. However, individual transcript sequences of the same gene can differ through naturally occurring variations (e.g. polymorphisms), each with its own valid existence. This clone is substantially in agreement with the reference, but a complete review of all prevailing variants is recommended prior to use. More info
OTI Annotation:	This clone was engineered to express the complete ORF with an expression tag. Expression varies depending on the nature of the gene.
Components:	The ORF clone is ion-exchange column purified and shipped in a 2D barcoded Matrix tube containing 10ug of transfection-ready, dried plasmid DNA (reconstitute with 100 ul of water).
Reconstitution Method:	<ol style="list-style-type: none">1. Centrifuge at 5,000xg for 5min.2. Carefully open the tube and add 100ul of sterile water to dissolve the DNA.3. Close the tube and incubate for 10 minutes at room temperature.4. Briefly vortex the tube and then do a quick spin (less than 5000xg) to concentrate the liquid at the bottom.5. Store the suspended plasmid at -20°C. The DNA is stable for at least one year from date of shipping when stored at -20°C.
RefSeq:	NM_152383.5
RefSeq Size:	3507 bp
RefSeq ORF:	2658 bp
Locus ID:	129563
UniProt ID:	Q8IYB7
Cytogenetics:	2q37.1
MW:	99.1 kDa
Gene Summary:	The protein encoded by this gene is similar in sequence to 3'/5' exonucleolytic subunits of the RNA exosome. The exosome is a large multimeric ribonucleotide complex responsible for degrading various RNA substrates. Several transcript variants, some protein-coding and some not, have been found for this gene. [provided by RefSeq, Mar 2012]

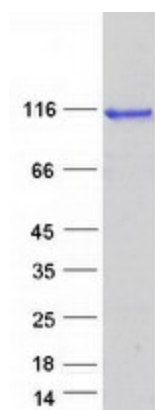
Product images:



Circular map for RC205512



Western blot validation of overexpression lysate (Cat# [LY407628]) using anti-DDK antibody (Cat# [TA50011-100]). Left: Cell lysates from untransfected HEK293T cells; Right: Cell lysates from HEK293T cells transfected with RC205512 using transfection reagent MegaTran 2.0 (Cat# [TT210002]).



Coomassie blue staining of purified DIS3L2 protein (Cat# [TP305512]). The protein was produced from HEK293T cells transfected with DIS3L2 cDNA clone (Cat# RC205512) using MegaTran 2.0 (Cat# [TT210002]).