

Product datasheet for RC205511L1

LASS3 (CERS3) (NM_178842) Human Tagged Lenti ORF Clone

Product data:

Product Type:	Expression Plasmids
Product Name:	LASS3 (CERS3) (NM_178842) Human Tagged Lenti ORF Clone
Tag:	Myc-DDK
Symbol:	LASS3
Synonyms:	ARCI9; LASS3
Mammalian Cell Selection:	None
Vector:	pLenti-C-Myc-DDK (PS100064)
E. coli Selection:	Chloramphenicol (34 ug/mL)
ORF Nucleotide Sequence:	The ORF insert of this clone is exactly the same as(RC205511).
Restriction Sites:	SgfI-MluI
Cloning Scheme:	

Cloning sites used for ORF Shuttling:



* The last codon before the Stop codon of the ORF.

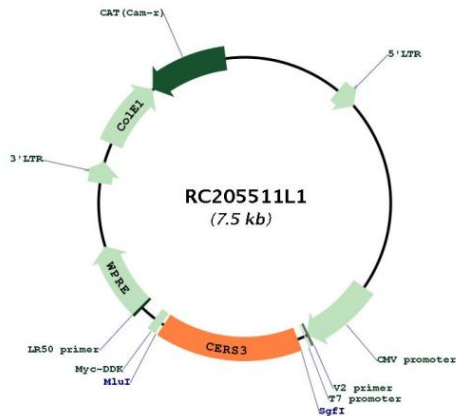
ACCN:	NM_178842
ORF Size:	1149 bp



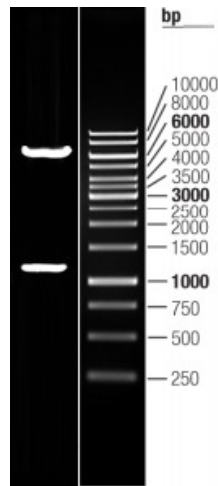
[View online »](#)

OTI Disclaimer:	The molecular sequence of this clone aligns with the gene accession number as a point of reference only. However, individual transcript sequences of the same gene can differ through naturally occurring variations (e.g. polymorphisms), each with its own valid existence. This clone is substantially in agreement with the reference, but a complete review of all prevailing variants is recommended prior to use. More info
OTI Annotation:	This clone was engineered to express the complete ORF with an expression tag. Expression varies depending on the nature of the gene.
Components:	The ORF clone is ion-exchange column purified and shipped in a 2D barcoded Matrix tube containing 10ug of transfection-ready, dried plasmid DNA (reconstitute with 100 ul of water).
Reconstitution Method:	<ol style="list-style-type: none">1. Centrifuge at 5,000xg for 5min.2. Carefully open the tube and add 100ul of sterile water to dissolve the DNA.3. Close the tube and incubate for 10 minutes at room temperature.4. Briefly vortex the tube and then do a quick spin (less than 5000xg) to concentrate the liquid at the bottom.5. Store the suspended plasmid at -20°C. The DNA is stable for at least one year from date of shipping when stored at -20°C.
RefSeq:	NM_178842.3
RefSeq Size:	3894 bp
RefSeq ORF:	1152 bp
Locus ID:	204219
UniProt ID:	Q8IU89
Cytogenetics:	15q26.3
Protein Families:	Transcription Factors, Transmembrane
MW:	46.2 kDa
Gene Summary:	This gene is a member of the ceramide synthase family of genes. The ceramide synthase enzymes regulate sphingolipid synthesis by catalyzing the formation of ceramides from sphingoid base and acyl-coA substrates. This family member is involved in the synthesis of ceramides with ultra-long-chain acyl moieties (ULC-Cers), important to the epidermis in its role in creating a protective barrier from the environment. The protein encoded by this gene has also been implicated in modification of the lipid structures required for spermatogenesis. Mutations in this gene have been associated with male fertility defects, and epidermal defects, including ichthyosis. Alternative splicing results in multiple transcript variants encoding different isoforms. [provided by RefSeq, Aug 2015]

Product images:



Circular map for RC205511L1



Double digestion of RC205511L1 using SgfI and MluI