

Product datasheet for **RC205508**

PRPF4B (NM_003913) Human Tagged ORF Clone

Product data:

| | |
|---------------------------|---|
| Product Type: | Expression Plasmids |
| Product Name: | PRPF4B (NM_003913) Human Tagged ORF Clone |
| Tag: | Myc-DDK |
| Symbol: | PRPF4B |
| Synonyms: | dj1013A10.1; PR4H; PRP4; PRP4H; PRP4K |
| Mammalian Cell Selection: | Neomycin |
| Vector: | pCMV6-Entry (PS100001) |
| E. coli Selection: | Kanamycin (25 ug/mL) |
| ORF Nucleotide Sequence: | >RC205508 ORF sequence Red=Cloning site Blue=ORF Green=Tags(s) |

TTTTGTAATACGACTCACTATAGGGCGGCCGGAATTCGTCGACTGGATCCGGTACCGAGGAGATCTGCC
GCC**CGATCGCC**

ATGGCCGCCGCGGAGACCCAGTCGCTACGGGAGCAGCCAGAGATGGAAGATGCTAATTCTGAAAAGAGTA
TAAATGAAGAAAATGGAGAAGTATCAGAAGACCAGTCTCAAATAAGCACAGTCGCACAAAAAAGAA
GCATAAACACAGAAGTAAACATAAGAAACATAAACATTCCTCAGAAGAAGACAAGGATAAAAAACATAAA
CATAAGCATAAACATAAGAAACACAAAAGAAAAGAGGTTATTGATGCTTCTGATAAAGAGGGTATGTCTC
CAGCAAAAAGAACTAACTTGATGATTTAGCTTTGCTAGAAGACTTGAAAAACAGAGAGCCTTGATTAA
GGCCGAACCTTGATAATGAGTTAATGGAAGGAAAGGTCCAGTCTGGTATGGGGCTCATTTTGCAAGGTTAT
GAGTCTGGCTCTGAAGAAGAGGGGAAATTCATGAAAAGCAAGAAATGGAAATAGTCTAGTACTAGAT
CTTCAAGTACAAAGGGGAACTTGAACCTTGTTGGACAATAAAATTAATAAAAGAAACGAAGTAAAAGCAG
ATCCAAAGAACGGACTAGACATAGGTCTGATAAAAAGAAAAGTAAAGGGGGTATTGAAATCGTTAAAGAG
AAAACAAC TAGGAGCAAGTCAAAGGAGAGGAAAAATCTAAAAGCCATCCAAAAGAAAGTAAAGTCTCAAG
ATCAAGCAAGGAAATCAAATCCCCTACCCTTAGAAGGCGATCTCAAGAGAAAATTTGGTAAGGCCAGATC
TCCTACTGATGATAAGGTTAAAAATGAAGATAAAAGTAAATCAAAGATAGGAAAAATCCCAATTATA
AATGAAAGTAGAAGTCGCGATCGAGTAAAAATCCAGATCCCCAGTTGATTTAAGAGGTAATCCAAAG
ACAGAAGGTACGGTCCAAGAGAGAAAAATCAAACGGTCTGAAACTGATAAAGAAAAAGCAATTA
ATCTCCCTCTAAAGATGCTTCATCTGGGAAAGAAATAGGTACCCAGCAGAAAGCCTGGTCTGATGCTCT
AAAAGAAGAAGTTTGTCTCCAAAACCACGTGATAAATCAAGAAGAAGCAGGTCTCCACTTTTGAATGATA
GAAGATCTAAGCAGAGCAAATCCCCTCGCGGACACTGTCTCCTGGGAGAAGAGCCAAGAGCCGATCCTT
AGAAAGAAAACGACGAGAACCAGAGAGGAGACGACTTTCTTCCAAGAACACGACCTCGAGATGATATC
CTCAGTAGACGTGAAAGATCAAAGATGCCAGCCCATCAATAGATGGTCTCCAAGCAAGAAAGCAGATC
GATCTCCATTAGAAGGAGGTCTCGTCCCACTCAGACGTAGCAGGTCTCCAAGAAAGAAAGCAGATC
TACTCGGAGAAGGACAGAGGTGCGAGGAGCAGATCACGCTTGCAGAGCGGTCTCGATCACGCGTGGT



CGTAGACGAAGGAGCAGAAGCAAAGTAAAGGAAGATAAAATTTAAAGGAAGTCTTTCTGAAGGAATGAAAG
 TTGAGCAGGAATCTTCGTCTGATGATAACCTTGAAGACTTTGATGTAGAGGAAGAAGATGAAGAAGCCCT
 AATAGAACAGAGAAGAATCCAAAGGCAGGCAATTGTTTCAGAAATATAAATACCTTGCTGAAGATAGCAAC
 ATGTCTGTGCCATCTGAACCAAGCAGCCCCAGAGCAGTACGAGAACACGATCACCATCTCCAGATGACA
 TTCTGGAGCGAGTAGCTGCTGATGTTAAAGAGTATGAACGGGAAAATGTTGATACATTTGAGGCCTCAGT
 GAAAGCCAAGCATAATCTAATGACAGTTGAACAGAATAATGGTTCATCTCAGAAGAAGTTGTTGGCACCT
 GATATGTTTACAGAATCTGATGATGTTTGTGCGTATTTTGTAGTGCCTCGTCTTCGGGCCCTGGCA
 TTGGAAAAGATTTCAAAGAGAATCCCAACCTCAGAGATAACTGGACCGATGCAGAAGGCTATTATCGTGT
 GAACATAGGTGAAGTCTAGATAAACGTTACAATGTGTATGGCTACACTGGGCAAGGTGATTTCAGTAAT
 GTTGTACGAGCCAGAGATAATGCAAGAGCCAACCAAGAAGTGGCTGTAAGATCATCAGAAAACATGAGC
 TCATGCAAAAGACTGGTTTAAAAGAATTAGAGTCTTGAAAAAATTAATGATGCTGATCCTGATGACAA
 ATTTTCATTGTCTGAGACTCTTAAGGCACCTCTATCACAAGCAGCATCTTGTCTGGTATTCGAGCCTCTC
 AGCATGAACCTACGAGAGGTGTTAAAAAATATGGTAAAGATGTTGGTCTTCATATTAAGCTGTAAGAT
 CCTATAGTCAGCAGTTGTTCTGGCATTGAAACTCCTTAAAAGATGCAATATCCTACATGCAGATATCAA
 GCCAGACAATATCCTGGTAAATGAATCCAAAATATTTTAAAGCTTTGCGATTTTGGGTCGGCTTCACAT
 GTTGCGGATAATGACATAACACCTTATCTTTTCAGTAGATTTTATCGTGCCTGAAATCATTATAGGTA
 AAAGCTATGACTATGGTATAGATATGTGGTCTGTAGGTTGCACCTTATACGAACTCTATACTGAAAAAT
 TTTATTCCTGGCAAAACCAATAACCATATGCTGAAGCTTGAATGGATCTCAAAGGAAAGATGCCAAAT
 AAGATGATTCGAAAAGGTGTGTTCAAAGATCAGCATTGATCAAATCTCAACTTCATGTACATAGAAG
 TTGATAAAGTAACAGAGAGGGGAGAAAGTTACTGTTATGAGCACCATTAATCCAAC TAAGGACCTGTTGGC
 TGACTTGATTGGTGCCAGAGACTTCTGAAGACCAACGTAAGAAAGTACACCAGCTAAAGGACTTGTG
 GACCAGATTCTGATGTTGGACCCAGCTAAACGAATTAGCATCAACCAGGCCCTACAGCACGCCTTCATCC
 AGGAAAAAATT

ACGCGTACGCGGCCGCTCGAGCAGAACTCATCTCAGAAGAGGATCTGGCAGCAATGATATCCTGGATT
 ACAAGGATGACGACGATAAGGTTTAA

Protein Sequence:

>RC205508 protein sequence
 Red=Cloning site Green=Tags(s)

MAAAETQSLREQPEMEDANSEKSIENEENGEVSEDQSQNKHSRHKKKKHKHRSKHKKHKSSEEDKDKKHK
 HKHKHKHKHRKEVIDASDKEGMSPAKRKLDDLALLEDEKQRALIKAELDNELMEGKVQSGMGLILQGY
 ESGSEEEGEIHEKARNGNRSSTRSSSTKGKLELVDNKITTKRSKRSKERTHRSDKKKSKGGIEIVKE
 KTRRSKSKERKSKSPSKRSKSQDQARKSKSPTLRRRSQEKIGKARSPTDDKVKIEDKSKSKDRKKSPII
 NESRSRDRGKKSRSVPDLRGKSKDRRSRKRKSKRSETDKEKKPIKSPSKDASSGKENRSPRRPGRSP
 KRRSLSPKPRDKSRRSRSPLLNDRRSKQSKSPSRTLSPGRRAKSRSLERKRREPERRRLSSPRTRPRDDI
 LSRRSRSDASPINRWSPTRRRSRSPIRRRSRSPRRRSRSPRRRSRSTRRRDRGRRSRSLRRRSRSGG
 RRRRSRSKVKEDKFKGSLSEGKVEQESSDDNLEDFDVEEEDDEALIEQRRIQRQAIVQKYKYLAEASN
 MSVPSESPSPQSSRTRSPSPDDILERVAADVKEYERENVDTFEASVKAKHNLMTVEQNGSSQKLLAP
 DMFTESDDMFAAYFDSARLRAAGIGKDFKENPNLRDNWTDAGYYRVNIGEVLDKRYNVYGYTGQGVFSN
 VVRARDNARANQEVAVKIIRNNEMLMKTGLKELEFLKKNLNDADPDDKFHCLRLLRHFYHKQHLCLVFEPL
 SMNLREVLKKGKDVGLHIKAVRSYSQQLFLALKLLKRCNILHADIKPDNILVNESKTIKLCDFGSASH
 VADNDITPYLFSRFYRAPEIIGKSYDYGIDMWSVGCTLYELTYGKILFPGKTNNHMLKLAIDLKGMKPN
 KMIRKGVFKDQHFQNLNFMYIEVDKVTEREKVTVMSTINPTKDLLADLIGCQRLPEDQRKQVHQLKDLL
 DQILMLDPAKRISINQALQHAFIQEKI

TRTRPLEQKLISEEDLAANDILDYKDDDDKV

Chromatograms:

https://cdn.origene.com/chromatograms/mk6141_f04.zip

Restriction Sites:

Sgfl-Mlul

Cloning Scheme:



ACCN: NM_003913

ORF Size: 3021 bp

OTI Disclaimer: The molecular sequence of this clone aligns with the gene accession number as a point of reference only. However, individual transcript sequences of the same gene can differ through naturally occurring variations (e.g. polymorphisms), each with its own valid existence. This clone is substantially in agreement with the reference, but a complete review of all prevailing variants is recommended prior to use. [More info](#)

OTI Annotation: This clone was engineered to express the complete ORF with an expression tag. Expression varies depending on the nature of the gene.

Components: The ORF clone is ion-exchange column purified and shipped in a 2D barcoded Matrix tube containing 10ug of transfection-ready, dried plasmid DNA (reconstitute with 100 ul of water).

Reconstitution Method:

1. Centrifuge at 5,000xg for 5min.
2. Carefully open the tube and add 100ul of sterile water to dissolve the DNA.
3. Close the tube and incubate for 10 minutes at room temperature.
4. Briefly vortex the tube and then do a quick spin (less than 5000xg) to concentrate the liquid at the bottom.
5. Store the suspended plasmid at -20°C. The DNA is stable for at least one year from date of shipping when stored at -20°C.

RefSeq: [NM_003913.5](#)

RefSeq Size: 7482 bp

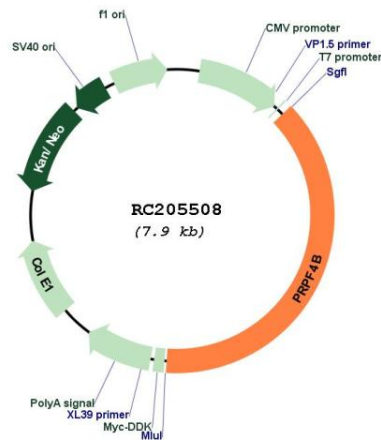
RefSeq ORF: 3024 bp

Locus ID: 8899

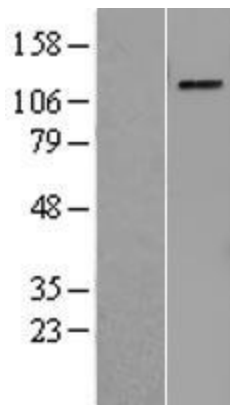
UniProt ID: [Q13523](#)
Cytogenetics: 6p25.2
Domains: pkinase, TyrKc, S_TKc
Protein Families: Druggable Genome, Protein Kinase
MW: 117 kDa

Gene Summary: Pre-mRNA splicing occurs in two sequential transesterification steps, and the protein encoded by this gene is thought to be involved in pre-mRNA splicing and in signal transduction. This protein belongs to a kinase family that includes serine/arginine-rich protein-specific kinases and cyclin-dependent kinases (CDKs). This protein is regarded as a CDK-like kinase (Clk) with homology to mitogen-activated protein kinases (MAPKs). [provided by RefSeq, Jul 2008]

Product images:



Circular map for RC205508



Western blot validation of overexpression lysate (Cat# [LY401286]) using anti-DDK antibody (Cat# [TA50011-100]). Left: Cell lysates from untransfected HEK293T cells; Right: Cell lysates from HEK293T cells transfected with RC205508 using transfection reagent MegaTran 2.0 (Cat# [TT210002]).