

## Product datasheet for **RC205507**

### PEA15 (NM\_003768) Human Tagged ORF Clone

#### Product data:

Product Type:	Expression Plasmids
Product Name:	PEA15 (NM_003768) Human Tagged ORF Clone
Tag:	Myc-DDK
Symbol:	PEA15
Synonyms:	HMAT1; HUMMAT1H; MAT1; MAT1H; PEA-15; PED; PED-PEA15; PED/PEA15
Mammalian Cell Selection:	Neomycin
Vector:	pCMV6-Entry (PS100001)
E. coli Selection:	Kanamycin (25 ug/mL)
ORF Nucleotide Sequence:	>RC205507 ORF sequence Red=Cloning site Blue=ORF Green=Tags(s)  TTTTGTAATACGACTCACTATAGGGCGCCGGAATTCGTCGACTGGATCCGGTACCGAGGAGATCTGCCGCC <b>CGATCGCC</b>  ATGGCTGAGTACGGGACCCTCCTGCAAGACCTGACCAACAACATCACCCTTGAAGATCTAGAACAGCTCAAGTCGGCTGCAAGGAAGACATCCCCAGCGAAAAGAGTGAGGAGATCACTACTGGCAGTGCCTGGTTTAGCTTCTGGAGAGCCACAACAAGCTGGACAAGACAACCTCTCTACATTGAGCACATCTTTGAGATCTCCCGCCGTCCTGACCTACTACTATGGTGGTTGACTACAGAACCCGTGTGCTGAAAAATCTCTGAGGAGGATGAGCTGGACACCAAGCTAACCCGTATCCCCAGTGCCAAGAAGTACAAAGACATTATCCGGCAGCCCTCTGAGGAAGAGATCATCAAATTGGCTCCCCACCGAAGAAGGCC  <b>ACGCGT</b> ACGCGGCCGCTCGAGCAGAAACTCATCTCAGAAGAGGATCTGGCAGCAAATGATATCCTGGATTACAAGGATGACGACGATAAGGTTTAA  >RC205507 protein sequence Red=Cloning site Green=Tags(s)  MAEYGTLLQDLTNNITLEDLEQLKSACKEDIPSEKSEEITGSAWFSFLESHNKLDKDNLSYIEHIFEISRPRDLLTMVVDYRTRVLKISEEDELDTKLTRIPSAKKYKDIIRQPSEEEIIKLAPPPKKA  <b>TR</b> TRPLEQKLISEEDLAANDILDYKDDDDKV
Protein Sequence:	
Chromatograms:	<a href="https://cdn.origene.com/chromatograms/mk6027_a06.zip">https://cdn.origene.com/chromatograms/mk6027_a06.zip</a>
Restriction Sites:	SgfI-MluI



View online »

**Cloning Scheme:**

**ACCN:**

NM\_003768

**ORF Size:**

390 bp

**OTI Disclaimer:**

Due to the inherent nature of this plasmid, standard methods to replicate additional amounts of DNA in E. coli are highly likely to result in mutations and/or rearrangements. Therefore, OriGene does not guarantee the capability to replicate this plasmid DNA. Additional amounts of DNA can be purchased from OriGene with batch-specific, full-sequence verification at a reduced cost. Please contact our customer care team at [custsupport@origene.com](mailto:custsupport@origene.com) or by calling 301.340.3188 option 3 for pricing and delivery.

The molecular sequence of this clone aligns with the gene accession number as a point of reference only. However, individual transcript sequences of the same gene can differ through naturally occurring variations (e.g. polymorphisms), each with its own valid existence. This clone is substantially in agreement with the reference, but a complete review of all prevailing variants is recommended prior to use. [More info](#)

**OTI Annotation:**

This clone was engineered to express the complete ORF with an expression tag. Expression varies depending on the nature of the gene.

**Components:**

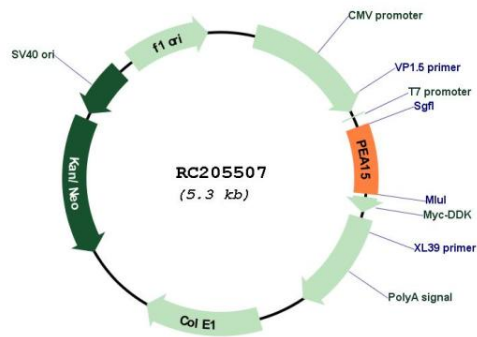
The ORF clone is ion-exchange column purified and shipped in a 2D barcoded Matrix tube containing 10ug of transfection-ready, dried plasmid DNA (reconstitute with 100 ul of water).

**Reconstitution Method:**

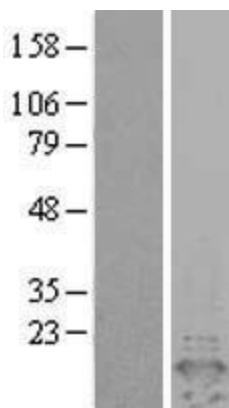
1. Centrifuge at 5,000xg for 5min.
2. Carefully open the tube and add 100ul of sterile water to dissolve the DNA.
3. Close the tube and incubate for 10 minutes at room temperature.
4. Briefly vortex the tube and then do a quick spin (less than 5000xg) to concentrate the liquid at the bottom.
5. Store the suspended plasmid at -20°C. The DNA is stable for at least one year from date of shipping when stored at -20°C.

RefSeq:	<a href="#">NM_003768.2</a> , <a href="#">NP_003759.1</a>
RefSeq Size:	2509 bp
RefSeq ORF:	393 bp
Locus ID:	8682
UniProt ID:	<a href="#">Q15121</a>
Cytogenetics:	1q23.2
Domains:	DED
Protein Families:	Druggable Genome
MW:	15 kDa
Gene Summary:	This gene encodes a death effector domain-containing protein that functions as a negative regulator of apoptosis. The encoded protein is an endogenous substrate for protein kinase C. This protein is also overexpressed in type 2 diabetes mellitus, where it may contribute to insulin resistance in glucose uptake. Alternative splicing results in multiple transcript variants. [provided by RefSeq, Jul 2014]

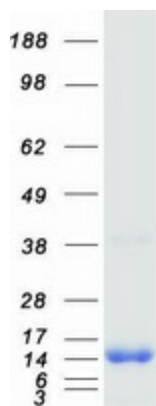
### Product images:



Circular map for RC205507



Western blot validation of overexpression lysate (Cat# [LY401240]) using anti-DDK antibody (Cat# [TA50011-100]). Left: Cell lysates from untransfected HEK293T cells; Right: Cell lysates from HEK293T cells transfected with RC205507 using transfection reagent MegaTran 2.0 (Cat# [TT210002]).



Coomassie blue staining of purified PEA15 protein (Cat# [TP305507]). The protein was produced from HEK293T cells transfected with PEA15 cDNA clone (Cat# RC205507) using MegaTran 2.0 (Cat# [TT210002]).