

Product datasheet for **RC205506**

NDUFS1 (NM_005006) Human Tagged ORF Clone

Product data:

Product Type:	Expression Plasmids
Product Name:	NDUFS1 (NM_005006) Human Tagged ORF Clone
Tag:	Myc-DDK
Symbol:	NDUFS1
Synonyms:	CI-75k; CI-75Kd; MC1DN5; PRO1304
Mammalian Cell Selection:	Neomycin
Vector:	pCMV6-Entry (PS100001)
E. coli Selection:	Kanamycin (25 ug/mL)



[View online »](#)

ORF Nucleotide
Sequence:

>RC205506 representing NM_005006
Red=Cloning site Blue=ORF Green=Tags(s)

TTTTGTAATACGACTCACTATAGGGCGGCCGGAATTCGTCGACTGGATCCGGTACCGAGGAGATCTGCC
GCCGCGATCGCC

ATGTTAAGGATACCTGTAAGAAAGCCTTAGTAGGCCCTTCTAAGTCTCCTAAAGGATGTGTTGCAACAA
CTGCCACAGCAGCAAGCAACTTGATTGAAGTATTTGTTGATGGTCAGTCTGTCATGGTGAACCGGGAAC
GACCGTCTCCAAGCTTGTGAGAAGTTGGCATGCAGATCCCTCGATTCTGTTATCATGAAAGTTGTCT
GTTGCTGGAAACTGCAGGATGTGCCTTGTGAAATGAGAAAGCCCTAAGTTGTAGTCTTGTGCCA
TGCCAGTAATGAAGGTTGGAATATCCTAACAACTCAGAAAAATCCAAAAAGCCAGGGAAGGTGTGAT
GGAGTTCTTATTAGCAAATCACCCATTGGACTGTCCTATTTGTGACCAGGGAGGTGAATGTGATCTGCAG
GACCAGTCCATGATGTTTGGAAATGATAGGAGCCGATTTTAGAGGGGAAGCGTGTGTGGAAGACAAGA
ACATTGGGCCATTGGTAAAGACCATCATGACAAGATGTATACAGTGTACTCGCTGCATCAGTTTGAAG
TGAGATTGCAGGAGTAGATGATTTGGGAACAACAGGCAGAGGAAATGATATGCAAGTTGGCACAATACATT
GAAAAGATGTTTATGCTGAACTGTCTGGGAATATCATTGATATCTGCCCTGTAGGTGCCCTAACCTCTA
AGCCCTATGCCTTACTGCCAGCCTTGGGAAACAAGAAAGACAGAATCCATTGATGTAATGGATGCGGT
TGGAAAGTAATATTGTGGTTAGCACAAGAACTGGAGAAGTATGAGGATTTGCCACGTATGCATGAGGAC
ATCAATGAAGAGTGGATCTGTATAAAACCAGATTTGCCTATGATGGGCTAAAACGTCAAAGACTTACCG
AGCCAATGGTCAGAAATGAAAAGGGCTTTTAACTATACTTCTTGGGAGGATGCGCTCTCTCGCGTAGC
TGGAAATGTTGCAGAGTTTCAAGGCAAAGATGTGGCAGCAATTGCAGGTGGCTTGGTGGATGCTGAAGCC
CTGGTAGCTCTCAAAGATTTGCTTAATAGAGTGGACTCTGACACCTTATGCACTGAAGAGGTCTTCCCA
CTGCAGGAGCTGGCAGAGATTTGCGTTCCAATTATCTTCTTAATACTACAATTGCTGGTGAAGAGGC
AGATGTTGTTCTTCTGGTTGGTACAAACCCACGTTTTGAGGCACCACTGTTTAATGCTAGAATTCGAAAG
AGCTGGCTGCATAATGACTTAAAAGTGGCCCTTAGGCAGTCCAGTGGACCTCACTTACACATATGACC
ACCTGGGAGACTCCCCAAAATTCTTCAAGACATTGCTTCGGGAAGCCATCCATTTAGCCAGGTCTTAA
GGAAGCTAAAAACCAATGGTGGTTTTAGGCAGTTCTGCACTCCAAGAAATGATGGAGCAGCAATTCTT
GCAGCTGTTTCTAGCATTGCACAAAAGATTCGGATGACTAGTGGTGTACTGGTATTGGAAGTTATGA
ATATCCTTCATAGGATTGCAAGTCAAGTAGCTGCTTTGGACCTTGGCTATAAGCCTGGGGTGAAGCAAT
TCGGAAGAACCCTCCAAGGTGCTGTTTCTCCTGGGAGCAGATGGAGTTGTATCACACGACAGGATTTG
CCAAGGATTGTTTCATTATTTATCAAGGACATCATGGTATGTTGGGGCTCCCATAGCTGATGTTATTC
TCCAGGAGCTGCTTACACAGAGAAGTCTGCTACATATGTCAACACTGAGGGTAGAGCTCAGCAGACTAA
GGTAGCAGTGACACCTCCTGGCTTGGCAAGAGAAGACTGGAAAATTATAAGAGCACTCTCTGAGATTGCT
GGAATGACTCTTCCATATGATACTCTGGATCAAGTAAGGAACAGATTGGAAGAAGTCTCTCCTAATCTTG
TTGATATGATGATATTGAAGGGCTAATTACTTCCAGCAAGCAAATGAGCTCTCAAAGCTAGTGAACCA
GCAGCTTCTTGCTGACCCACTTGTCCACCTCAGCTAACTATAAAAGACTTCTACATGACAGATTCAATT
AGCAGAGCCTCACAGACAATGGCCAAATGTGTCAAAGCTGTACAGAGGGTGCCAGGCAGTAGAGGAAC
CATCCATATGC

ACGCGTACGCGGCCGCTCGAGCAGAACTCATCTCAGAAGAGGATCTGGCAGCAAATGATATCCTGGATT
ACAAGGATGACGACGATAAGGTTTAA

Protein Sequence: >RC205506 representing NM_005006
Red=Cloning site Green=Tags(s)

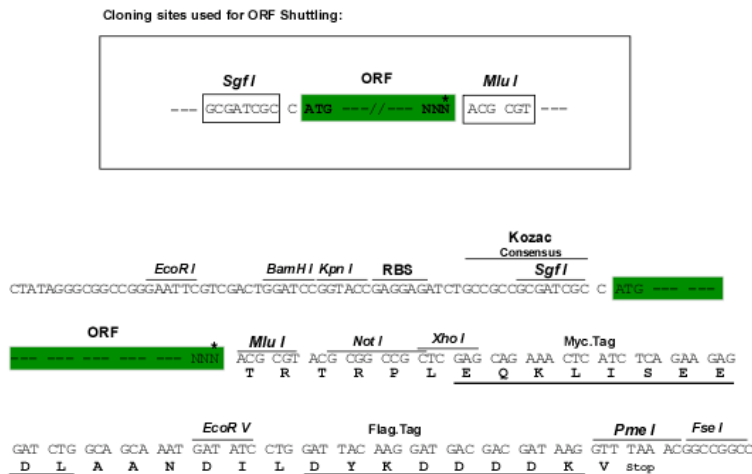
MLRIPVRKALVGLSKSPKGCVRTTATAASNLIIEFVVDGQSVMEVPGTTVLQACEKVGMIIPRFCYHERLS
VAGNCRMCLVEIEKAPKVVAACAMPVMKGWNILTNSESKKAREGVMEFLLANHPLDCPICDQGGECDLQ
DQSMFMFNGNDRSRFLEKRAVEDKNIGPLVKTIMTRCIQCTRCIRFASEIAGVDDLTTGRGNDMQVGTIYI
EKMFMSSELSGNIIDIICPVGALTSKPYAFTAQPWETRKTESIDVMDAVGSNIVVSTRTGEVMRILPRMHED
INEEWISDKTRFAYDGLKRQRLTEPMVRNEKGLLTYTSWEDALSRVAGMLQSFQKDVAAIAGGLVDAEA
LVALKDLLNRVSDTLCTEEVFPTAGAGTDLRSNYLLNTTIAGVEEADVLLVGTNPRFEAPLFNARIRK
SWLHNDLKVALIGSPVDLTYTYDHLGDSPKILQDIASGSHPFQVLEAKKPMVVLGSSALQRNDGAAIL
AAVSSIAQKIRMTSGVTGDWKVMNILHRIASQVAALDLGYKPGVEAIRKNPPKVLFLGADGGCITRQDL
PKDCFIIYQGHGVDVGAPIADVILPGAAYTEKSATYVNTTEGRAQQTKVAVTPPLAREDWKIIIRALSEIA
GMTLPYDITLDQVRNRLEEVSPLVRYDDIEGANYFQQANELSKLVNQQLLADPLVPPQLTIKDFYMTDSI
SRASQTMKCVKAVTEGAQAVEEPSIC

TRTRPLEQKLISEEDLAANDILDYKDDDDKV

Chromatograms: https://cdn.origene.com/chromatograms/mg3065_f09.zip

Restriction Sites: Sgfl-MluI

Cloning Scheme:



* The last codon before the Stop codon of the ORF

ACCN: NM_005006

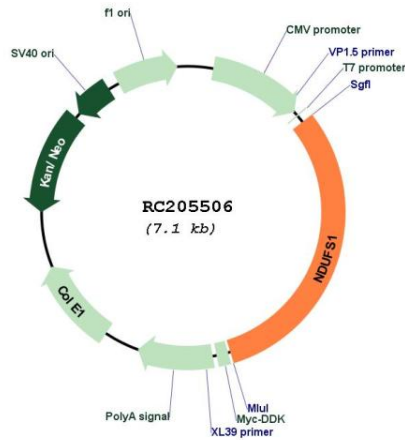
ORF Size: 2181 bp

OTI Disclaimer: The molecular sequence of this clone aligns with the gene accession number as a point of reference only. However, individual transcript sequences of the same gene can differ through naturally occurring variations (e.g. polymorphisms), each with its own valid existence. This clone is substantially in agreement with the reference, but a complete review of all prevailing variants is recommended prior to use. [More info](#)

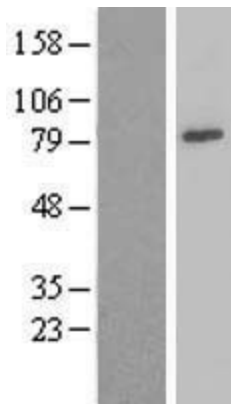
OTI Annotation: This clone was engineered to express the complete ORF with an expression tag. Expression varies depending on the nature of the gene.

Components:	The ORF clone is ion-exchange column purified and shipped in a 2D barcoded Matrix tube containing 10ug of transfection-ready, dried plasmid DNA (reconstitute with 100 ul of water).
Reconstitution Method:	<ol style="list-style-type: none">1. Centrifuge at 5,000xg for 5min.2. Carefully open the tube and add 100ul of sterile water to dissolve the DNA.3. Close the tube and incubate for 10 minutes at room temperature.4. Briefly vortex the tube and then do a quick spin (less than 5000xg) to concentrate the liquid at the bottom.5. Store the suspended plasmid at -20°C. The DNA is stable for at least one year from date of shipping when stored at -20°C.
RefSeq:	NM_005006.4
RefSeq Size:	3417 bp
RefSeq ORF:	2184 bp
Locus ID:	4719
UniProt ID:	P28331
Cytogenetics:	2q33.3
Domains:	fer2, molybdopterin
Protein Pathways:	Alzheimer's disease, Huntington's disease, Metabolic pathways, Oxidative phosphorylation, Parkinson's disease
MW:	79.44 kDa
Gene Summary:	The protein encoded by this gene belongs to the complex I 75 kDa subunit family. Mammalian complex I is composed of 45 different subunits. It locates at the mitochondrial inner membrane. This protein has NADH dehydrogenase activity and oxidoreductase activity. It transfers electrons from NADH to the respiratory chain. The immediate electron acceptor for the enzyme is believed to be ubiquinone. This protein is the largest subunit of complex I and it is a component of the iron-sulfur (IP) fragment of the enzyme. It may form part of the active site crevice where NADH is oxidized. Mutations in this gene are associated with complex I deficiency. Several transcript variants encoding different isoforms have been found for this gene. [provided by RefSeq, Jan 2011]

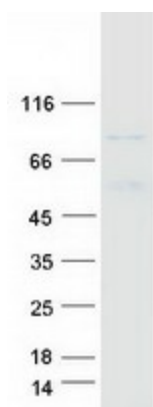
Product images:



Circular map for RC205506



Western blot validation of overexpression lysate (Cat# [LY417579]) using anti-DDK antibody (Cat# [TA50011-100]). Left: Cell lysates from untransfected HEK293T cells; Right: Cell lysates from HEK293T cells transfected with RC205506 using transfection reagent MegaTran 2.0 (Cat# [TT210002]).



Coomassie blue staining of purified NDUFS1 protein (Cat# [TP305506]). The protein was produced from HEK293T cells transfected with NDUFS1 cDNA clone (Cat# RC205506) using MegaTran 2.0 (Cat# [TT210002]).