

## Product datasheet for RC205505

### RAB18 (NM\_021252) Human Tagged ORF Clone

#### Product data:

**Product Type:** Expression Plasmids  
**Product Name:** RAB18 (NM\_021252) Human Tagged ORF Clone  
**Tag:** Myc-DDK  
**Symbol:** RAB18  
**Synonyms:** RAB18LI1; WARBM3  
**Mammalian Cell Selection:** Neomycin  
**Vector:** pCMV6-Entry (PS100001)  
**E. coli Selection:** Kanamycin (25 ug/mL)  
**ORF Nucleotide Sequence:** >RC205505 ORF sequence  
 Red=Cloning site Blue=ORF Green=Tags(s)

TTTTGTAATACGACTCACTATAGGGCGCCGGGAATTCGTCGACTGGATCCGGTACCGAGGAGATCTGCC  
 GCC**CGATCGCC**

ATGGACGAGGACGTGCTAACCACCCTGAAGATCCTCATCATCGGCGAGAGTGGGGTGGGCAAGTCCAGCC  
 TGCTCTTGAGGTTACAGATGATACGTTTATCCAGAACTGCAGCAACAATAGGTGTTGACTTTAAGGT  
 GAAAACAATTTTCAGTGGATGAAATAAGGCTAACTTGAATATGGGATACTGCTGGTCAAGAGAGGTTT  
 AGAACATTAACCTCCAGCTATTATAGAGGTGCACAGGGTGTATATTAGTTTATGATGCACAAGAAGAG  
 ATACATTTGTTAACTGGATAATTGGTTAAATGAATTGAAACATACTGTACAAGAAATGACATAGTAAA  
 CATGCTAGTTGAAATAAAATCGATAAGGAAAATCGTGAAGTCGATAGAAATGAAGGCCTGAAATTTGCA  
 CGAAAGCATTCCATGTTATTTATAGAGGCAAGTGCAAAAACCTGTGATGGTGTACAATGTGCCTTTGAAG  
 AACTTGTGAAAAGATCATTAGACCCCTGGACTGTGGGAAAGTGAGAACCAGAAATAAAGGAGTCAAAC  
 GTCACACAGGGAAGAAGGCCAAGGAGGAGGAGCCTGTGGTGGTTATTGCTCTGTGTTA

**ACGCGT**ACGCGGCCGCTCGAGCAGAACTCATCTCAGAAGAGGATCTGGCAGCAATGATATCCTGGATT  
 ACAAGGATGACGACGATAAGGTTTAA

**Protein Sequence:** >RC205505 protein sequence  
 Red=Cloning site Green=Tags(s)

MDDEVLTTLKILIIIGESVGVKSSLLLRFTDDTFDPELAATIGVDFKVKTISVDGNKAKLAIWDTAGQERF  
 RTLTPSYRGAQGVILVDVTRRDTFVKLDNWLNELETYCTRNDIVNMLVGNKIDKENREVDREGLKFA  
 RKHSMLFIEASAKTCDGVQCAFEELVEKIIQTPGLWESENQNKGVKLSHREEGQGGGACGGYCSVL

**TRTRPLEQKLISEEDLAANDILDYKDDDDKV**

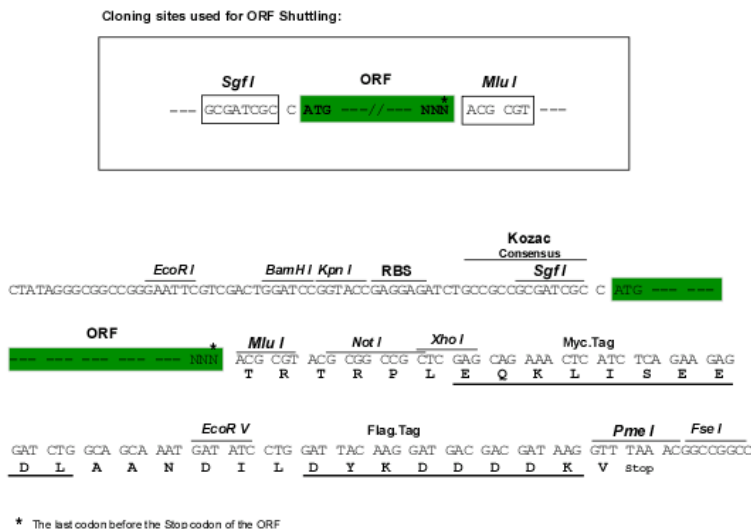


[View online »](#)

**Chromatograms:** [https://cdn.origene.com/chromatograms/mk6027\\_e06.zip](https://cdn.origene.com/chromatograms/mk6027_e06.zip)

**Restriction Sites:** SgfI-MluI

**Cloning Scheme:**



**ACCN:** NM\_021252

**ORF Size:** 618 bp

**OTI Disclaimer:** The molecular sequence of this clone aligns with the gene accession number as a point of reference only. However, individual transcript sequences of the same gene can differ through naturally occurring variations (e.g. polymorphisms), each with its own valid existence. This clone is substantially in agreement with the reference, but a complete review of all prevailing variants is recommended prior to use. [More info](#)

**OTI Annotation:** This clone was engineered to express the complete ORF with an expression tag. Expression varies depending on the nature of the gene.

**Components:** The ORF clone is ion-exchange column purified and shipped in a 2D barcoded Matrix tube containing 10ug of transfection-ready, dried plasmid DNA (reconstitute with 100 ul of water).

**Reconstitution Method:**

1. Centrifuge at 5,000xg for 5min.
2. Carefully open the tube and add 100ul of sterile water to dissolve the DNA.
3. Close the tube and incubate for 10 minutes at room temperature.
4. Briefly vortex the tube and then do a quick spin (less than 5000xg) to concentrate the liquid at the bottom.
5. Store the suspended plasmid at -20°C. The DNA is stable for at least one year from date of shipping when stored at -20°C.

**RefSeq:** [NM\\_021252.5](#)

**RefSeq Size:** 5003 bp

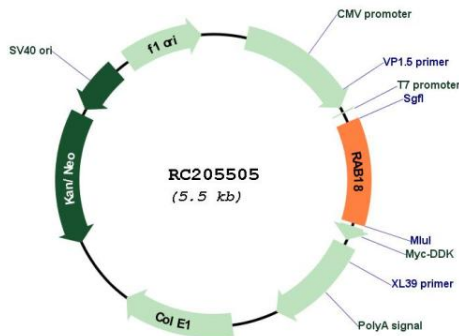
**RefSeq ORF:** 621 bp

**Locus ID:** 22931

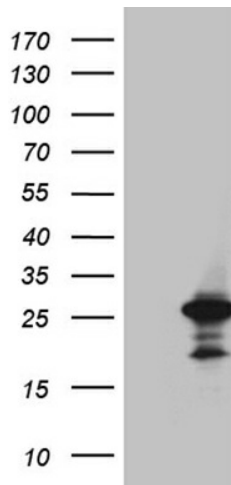
**UniProt ID:** [Q9NP72](#)  
**Cytogenetics:** 10p12.1  
**Domains:** ras, RAN, RAS, RHO, RAB, ARF  
**Protein Families:** Druggable Genome  
**MW:** 23 kDa

**Gene Summary:** The protein encoded by this gene is a member of a family of Ras-related small GTPases that regulate membrane trafficking in organelles and transport vesicles. Knockdown studies in zebrafish suggest that this protein may have a role in eye and brain development. Mutations in this gene are associated with Warburg micro syndrome type 3. Alternatively spliced transcript variants have been found for this gene. [provided by RefSeq, Jan 2012]

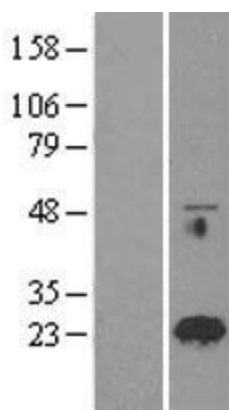
### Product images:



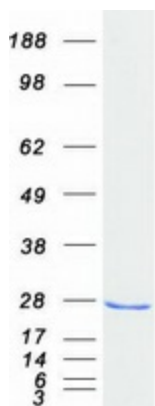
Circular map for RC205505



HEK293T cells were transfected with the pCMV6-ENTRY control (Cat# [PS100001], Left lane) or pCMV6-ENTRY RAB18 (Cat# RC205505, Right lane) cDNA for 48 hrs and lysed. Equivalent amounts of cell lysates (5 ug per lane) were separated by SDS-PAGE and immunoblotted with anti-RAB18 (Cat# [TA811906]). Positive lysates [LY402861] (100ug) and [LC402861] (20ug) can be purchased separately from OriGene.



Western blot validation of overexpression lysate (Cat# [LY402861]) using anti-DDK antibody (Cat# [TA50011-100]). Left: Cell lysates from untransfected HEK293T cells; Right: Cell lysates from HEK293T cells transfected with RC205505 using transfection reagent MegaTran 2.0 (Cat# [TT210002]).



Coomassie blue staining of purified RAB18 protein (Cat# [TP305505]). The protein was produced from HEK293T cells transfected with RAB18 cDNA clone (Cat# RC205505) using MegaTran 2.0 (Cat# [TT210002]).