

Product datasheet for RC205503

NANP (NM_152667) Human Tagged ORF Clone

Product data:

Product Type:	Expression Plasmids
Product Name:	NANP (NM_152667) Human Tagged ORF Clone
Tag:	Myc-DDK
Symbol:	NANP
Synonyms:	C20orf147; dj694B14.3; HDHD4
Mammalian Cell Selection:	Neomycin
Vector:	pCMV6-Entry (PS100001)
E. coli Selection:	Kanamycin (25 ug/mL)
ORF Nucleotide Sequence:	>RC205503 ORF sequence Red=Cloning site Blue=ORF Green=Tags(s)

TTTTGTAATACGACTCACTATAGGGCGCCGGGAATTCGTCGACTGGATCCGGTACCGAGGAGATCTGCC
GCC**CGATCGCC**

ATGGGGCTGAGCCGCGTGC GGCGGTTTTCTTTGACTTGGACAACACTCTCATCGACACGGCCGGGGCGA
GCAGGAGAGGCATGTTGGAGGTGATAAACTCTTACAATCAAAATACCATTATAAAGAAGAGGCTGAAAT
CATCTGTGATAAAGTTCAAGTTAACTCAGCAAGGAATGTTTTCATCCTTACAATACATGCATTACTGAT
TTAAGGACTTCACATTGGGAAGAAGCAATCCAGGAAACAAAAGGTGTCAGCCAATAGAAAATTGGCTG
AAGAATGTTATTTCTTTGGAAATCTACACGTTTACAGCATATGACACTAGCAGAAGACGTCAAAGCCAT
GCTTACTGAACCTCGAAAGGAGGTCCGCCTACTTCTATTAACGAATGGGGACAGACAGCCAGAGGGAG
AAGATTGAGGCTTGTGCCTGTCAGTCCTATTTTGACGCTGTTGTTGTAGGTTGGAGAGCAGAGAGAGGAGA
AACCAGCACCGTCCATATTTTACTGCTGCAATCTTCTCGGAGTACAACCTGGGGACTGTGTGATGGT
CGGTGACACATTAGAAACCGACATCCAAGGAGGCCTCAATGCAGGATTGAAAGCAACAGTCTGGATCAAT
AAAAATGGAATAGTGCCACTGAAGTCTCCCGATTCCGCATTACATGTTTTCTTCTGTGCTAGAGTTAC
CTGCTCTTTACAAAGTATAGACTGCAAAGTCAGTATGTCCACT

ACGCGTACGCGGCCGCTCGAGCAGAACTCATCTCAGAAGAGGATCTGGCAGCAAATGATATCCTGGATT
ACAAGGATGACGACGATAAGGTTTAA



[View online »](#)

Protein Sequence: >RC205503 protein sequence
 Red=Cloning site Green=Tags(s)

MGLSRVRAVFFDLNNTLIDTAGASRRGMLEVIKLLQSKYHYKEEAEIICDKVQVKLSKECFHPYNTCITD
 LRTSHWEEAIQETKGGAA NRKLAEECYFLWKSTRLQHMTLAEDVKAML TELRKEVRLLLL TNGDRQTQRE
 KIEACACQSYFDVAVVVGGEQREEKPAPSI FYCCNLLGVQPGDCVMVGD TLETDIQGLNAGLKATVWIN
 KNGIVPLKSSPVPHYMVSSVLEL PALLQSIDCKVSMST

TRTRPLEQKLISEEDLAANDILDYKDDDDKV

Chromatograms: https://cdn.origene.com/chromatograms/mk6312_e01.zip

Restriction Sites: SgfI-MluI

Cloning Scheme:

Cloning sites used for ORF Shuttling:



* The last codon before the Stop codon of the ORF

ACCN: NM_152667

ORF Size: 744 bp

OTI Disclaimer: The molecular sequence of this clone aligns with the gene accession number as a point of reference only. However, individual transcript sequences of the same gene can differ through naturally occurring variations (e.g. polymorphisms), each with its own valid existence. This clone is substantially in agreement with the reference, but a complete review of all prevailing variants is recommended prior to use. [More info](#)

OTI Annotation: This clone was engineered to express the complete ORF with an expression tag. Expression varies depending on the nature of the gene.

Components: The ORF clone is ion-exchange column purified and shipped in a 2D barcoded Matrix tube containing 10ug of transfection-ready, dried plasmid DNA (reconstitute with 100 ul of water).

- Reconstitution Method:**
1. Centrifuge at 5,000xg for 5min.
 2. Carefully open the tube and add 100ul of sterile water to dissolve the DNA.
 3. Close the tube and incubate for 10 minutes at room temperature.
 4. Briefly vortex the tube and then do a quick spin (less than 5000xg) to concentrate the liquid at the bottom.
 5. Store the suspended plasmid at -20°C. The DNA is stable for at least one year from date of shipping when stored at -20°C.

RefSeq: [NM_152667.3](#)

RefSeq Size: 3806 bp

RefSeq ORF: 747 bp

Locus ID: 140838

UniProt ID: [Q8TBE9](#)

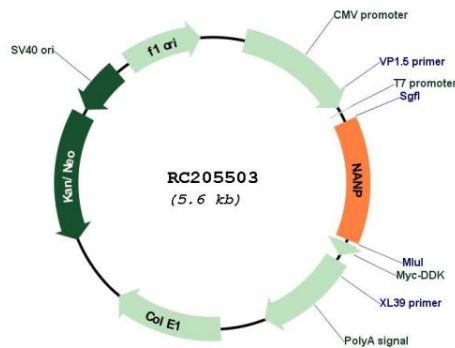
Cytogenetics: 20p11.21

Domains: Hydrolase

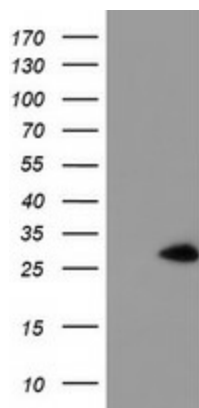
Protein Pathways: Amino sugar and nucleotide sugar metabolism, Metabolic pathways

MW: 27.8 kDa

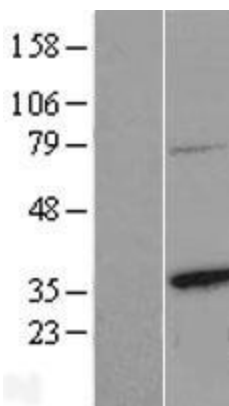
Product images:



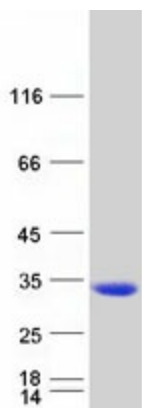
Circular map for RC205503



HEK293T cells were transfected with the pCMV6-ENTRY control (Cat# [PS100001], Left lane) or pCMV6-ENTRY NANP (Cat# RC205503, Right lane) cDNA for 48 hrs and lysed. Equivalent amounts of cell lysates (5 ug per lane) were separated by SDS-PAGE and immunoblotted with anti-NANP (Cat# [TA504539]). Positive lysates [LY407388] (100ug) and [LC407388] (20ug) can be purchased separately from OriGene.



Western blot validation of overexpression lysate (Cat# [LY407388]) using anti-DDK antibody (Cat# [TA50011-100]). Left: Cell lysates from untransfected HEK293T cells; Right: Cell lysates from HEK293T cells transfected with RC205503 using transfection reagent MegaTran 2.0 (Cat# [TT210002]).



Coomassie blue staining of purified NANP protein (Cat# [TP305503]). The protein was produced from HEK293T cells transfected with NANP cDNA clone (Cat# RC205503) using MegaTran 2.0 (Cat# [TT210002]).