

Product datasheet for **RC205500**

RBJ (DNAJC27) (NM_016544) Human Tagged ORF Clone

Product data:

Product Type:	Expression Plasmids
Product Name:	RBJ (DNAJC27) (NM_016544) Human Tagged ORF Clone
Tag:	Myc-DDK
Symbol:	RBJ
Synonyms:	RabJS; RBJ
Mammalian Cell Selection:	Neomycin
Vector:	pCMV6-Entry (PS100001)
E. coli Selection:	Kanamycin (25 ug/mL)
ORF Nucleotide Sequence:	>RC205500 ORF sequence Red=Cloning site Blue=ORF Green=Tags(s)

TTTTGTAATACGACTCACTATAGGGCGGCCGGAATTCGTCGACTGGATCCGGTACCGAGGAGATCTGCC
 GCC**CGATCGCC**

ATGGAGGCCAACATGCCGAAGCGGAAGGAGCCTGGCAGGTCTCTCCGCATCAAAGTCATCTCCATGGGCA
 ACGCCGAAGTGGGAAAAGCTGTATTATAAAGCGATACTGTGAGAAAAGATTCTGTCTAAATACCTGGC
 AACAAATTGGAATTGACTATGGAGTCACAAAGGTACACGTCAGAGACAGAGAAATCAAAGTTAACATCTTT
 GATATGGCTGGACATCCCTTCTTCTATGAGGTTTCAAATGAGTTTACAAGGACACACAGGGTGTGATAC
 TGGTCTATGATGTTGGGCAGAAAGACTCCTTTGACGCCCTTGATGCGTGGCTGGCAGAAATGAAGCAAGA
 GCTTGGACCTCATGGAACATGGAAAATATTATATTTGTAGTTTGTGCCAACAAGATTGATTGTACCAAA
 CATCGCTGTGTAGATGAAAGTGAAGGACGTCTTTGGGCTGAAAGCAAAGGTTCTCTGTACTTTGAAACTT
 CAGCACAAACTGGAGAAGGCATTAATGAGATGTTCCAGACCTTTTATATATCCATAGTTGATTTATGTGA
 AAATGGCGGGAACGCCCTACCACCAATAGCAGTGCTAGTTTCACCAAAGAACAAGCAGATGCCATTCGC
 AGAATTCGAAATAGTAAAGACAGTTGGGACATGCTGGGAGTCAAACCTGGGGCCTCAAGGGATGAAGTCA
 ATAAAGCGTATCGGAACTTGCTGTGCTTCTTCACCCTGACAAATGTGTAGCACCTGGCAGTGAAGATGC
 CTTCAAAGCAGTTGTGAATGCTCGGACAGCCCTCTGAAAAACATCAAG

ACGCGTACGCGGCCGCTCGAGCAGAAACTCATCTCAGAAGAGGATCTGGCAGCAAATGATATCTGGATT
 ACAAGGATGACGACGATAAGGTTTAA


[View online »](#)

Protein Sequence: >RC205500 protein sequence
 Red=Cloning site Green=Tags(s)

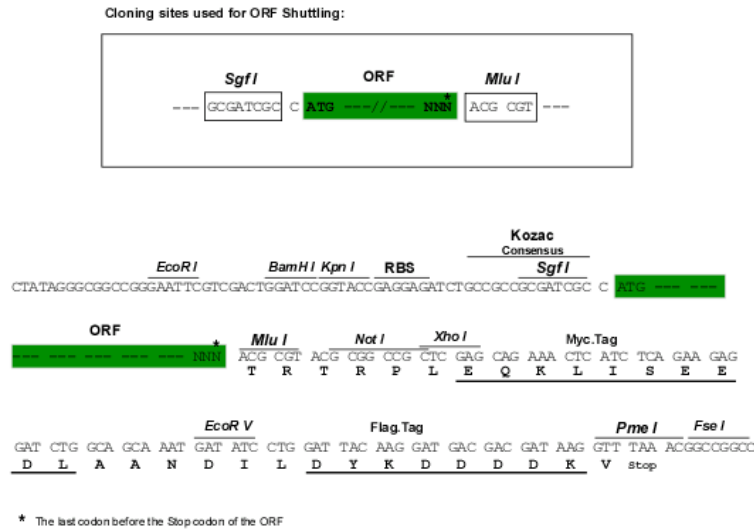
MEANMPKRKEPGRSLRIKVISMGNAEVGKSCIIKRYCEKRFVSKYLATIGIDYGVTKVHVRDREIKVNIF
 DMAGHPFFYEVRNEFYKDTQGVILVYDVGVQKDSFDALDAWLAEMKQELGPHGNMENIIFVVCANKIDCTK
 HRCVDESEGRWAEKGFYFETSAQTGEGINEMFQTFYISIVDLCENGKRPPTNSSASFTKEQADAIR
 RIRNSKDSWMLGVKPGASRDEVNKAYRKLAVLLHPDKCVAPGSEDAFKAVVNARTALLKNIK

TRTRPLEQKLISEEDLAANDILDYKDDDDKV

Chromatograms: https://cdn.origene.com/chromatograms/mk6313_e11.zip

Restriction Sites: SgfI-MluI

Cloning Scheme:



ACCN: NM_016544

ORF Size: 819 bp

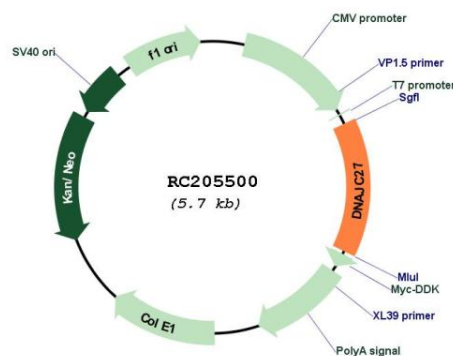
OTI Disclaimer: Due to the inherent nature of this plasmid, standard methods to replicate additional amounts of DNA in E. coli are highly likely to result in mutations and/or rearrangements. Therefore, OriGene does not guarantee the capability to replicate this plasmid DNA. Additional amounts of DNA can be purchased from OriGene with batch-specific, full-sequence verification at a reduced cost. Please contact our customer care team at custsupport@origene.com or by calling 301.340.3188 option 3 for pricing and delivery.

The molecular sequence of this clone aligns with the gene accession number as a point of reference only. However, individual transcript sequences of the same gene can differ through naturally occurring variations (e.g. polymorphisms), each with its own valid existence. This clone is substantially in agreement with the reference, but a complete review of all prevailing variants is recommended prior to use. [More info](#)

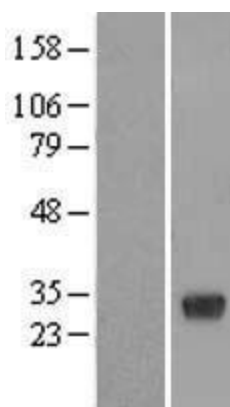
OTI Annotation: This clone was engineered to express the complete ORF with an expression tag. Expression varies depending on the nature of the gene.

Components:	The ORF clone is ion-exchange column purified and shipped in a 2D barcoded Matrix tube containing 10ug of transfection-ready, dried plasmid DNA (reconstitute with 100 ul of water).
Reconstitution Method:	<ol style="list-style-type: none"> 1. Centrifuge at 5,000xg for 5min. 2. Carefully open the tube and add 100ul of sterile water to dissolve the DNA. 3. Close the tube and incubate for 10 minutes at room temperature. 4. Briefly vortex the tube and then do a quick spin (less than 5000xg) to concentrate the liquid at the bottom. 5. Store the suspended plasmid at -20°C. The DNA is stable for at least one year from date of shipping when stored at -20°C.
Note:	Plasmids are not sterile. For experiments where strict sterility is required, filtration with 0.22um filter is required.
RefSeq:	<u>NM_016544.1</u> , <u>NP_057628.1</u>
RefSeq Size:	5008 bp
RefSeq ORF:	822 bp
Locus ID:	51277
UniProt ID:	<u>Q9NZQ0</u>
Cytogenetics:	2p23.3
Domains:	DnaJ, ras, RAN, RAS, RHO, RAB
MW:	30.9 kDa
Gene Summary:	GTPase which can activate the MEK/ERK pathway and induce cell transformation when overexpressed. May act as a nuclear scaffold for MAPK1, probably by association with MAPK1 nuclear export signal leading to enhanced ERK1/ERK2 signaling.[UniProtKB/Swiss-Prot Function]

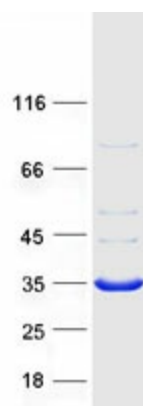
Product images:



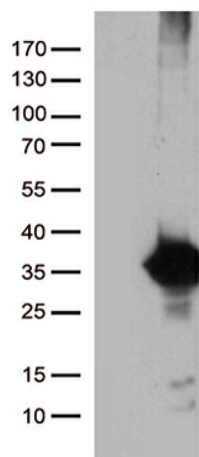
Circular map for RC205500



Western blot validation of overexpression lysate (Cat# [LY413917]) using anti-DDK antibody (Cat# [TA50011-100]). Left: Cell lysates from untransfected HEK293T cells; Right: Cell lysates from HEK293T cells transfected with RC205500 using transfection reagent MegaTran 2.0 (Cat# [TT210002]).



Coomassie blue staining of purified DNAJC27 protein (Cat# [TP305500]). The protein was produced from HEK293T cells transfected with DNAJC27 cDNA clone (Cat# RC205500) using MegaTran 2.0 (Cat# [TT210002]).



HEK293T cells were transfected with the pCMV6-ENTRY control (Cat# [PS100001], Left lane) or pCMV6-ENTRY DNAJC27 (Cat# RC205500, Right lane) cDNA for 48 hrs and lysed. Equivalent amounts of cell lysates (5 ug per lane) were separated by SDS-PAGE and immunoblotted with anti-DNAJC27 (Cat# [TA811070])(1:2000). Positive lysates [LY413917] (100ug) and [LC413917] (20ug) can be purchased separately from OriGene.