

Product datasheet for **RC205496**

C1orf93 (FAM213B) (NM_152371) Human Tagged ORF Clone

Product data:

Product Type: Expression Plasmids
Product Name: C1orf93 (FAM213B) (NM_152371) Human Tagged ORF Clone
Tag: Myc-DDK
Symbol: C1orf93
Synonyms: C1orf93; FAM213B
Mammalian Cell Selection: Neomycin
Vector: pCMV6-Entry (PS100001)
E. coli Selection: Kanamycin (25 ug/mL)
ORF Nucleotide Sequence: >RC205496 ORF sequence
 Red=Cloning site Blue=ORF Green=Tags(s)

TTTTGTAATACGACTCACTATAGGGCGGCCGGAATTCGTCGACTGGATCCGGTACCGAGGAGATCTGCC
 GCC**CGATCGCC**

ATGAGCACGGTGGACCTTGCTCGCGTGGGCGCGTGCATCCTGAAGCATGCGGTGACCGGGGAGGCCGTGG
 AGCTGCGGAGCCTGTGGCGGGAGCACGCGTGCCTGGTGGCCGGGCTGCGGCGCTTCGGGTGCGTGGTGTG
 CCGCTGGATCGCCAGGACCTCAGCAGCCTTGCTGGGCTCCTGGACCAACACGGCGTGCCTGTTGGG
 GTAGGGCCCGAGGCCCTGGTCTGCAGGAGTTCCTGGACGGGACTACTTCGCGGAGAGCTCTACCTGG
 ATGAGAGCAAGCAGCTTTACAAGGAGCTAGGCTTCAAGCGGTACAACAGCCTGAGCATCCTCCAGCAGC
 TCTGGGGAAGCCCGTGCCTGATGTGGCTGCCAAGGCCAAGGCCGTTGGCATCCAGGGGAACCTGTCTGGG
 GACCTGCTGCAGAGCGGAGGGCTGCTGGTGGTCAAGGTTGGTATAAAGTGCTCCTGCATTTCTGTC
 AGAAGTCCCAGGCGACTACGTCCCAAGGAGCACATCCTGCAGGTCTGGGCATCTCTGCGGAGGTCTG
 TGCCAGCGACCCGCTCAGTGTGACAGAGAGGTG

AG**CGGACCG**ACGCGTACGCGCCGCTCGAGCAGAACTCATCTCAGAAGAGGATCTGGCAGCAAATGATATCC
 TGGATTACAAGGATGACGACGATAAGGTTTAA

Protein Sequence: >RC205496 protein sequence
 Red=Cloning site Green=Tags(s)

MSTVDLARVGCILKHAVTGEAVELRSLWREHACVVAGLRRFGCVVCRWIAQDLSSLAGLLDQHGVRLVG
 VGPEALGLQEFLDGDYFAGELYLDESKQLYKELGFKRYNSLSILPAALGKPVVDVAAKAVGIQGNLSG
 DLLQSGLLLVSKGGDKVLLHFVQKSPGDYVPKEHILQVLGISAEVCASDPPQCDREV

SGPTRTRPLEQKLISEEDLAANDILDYKDDDDKV

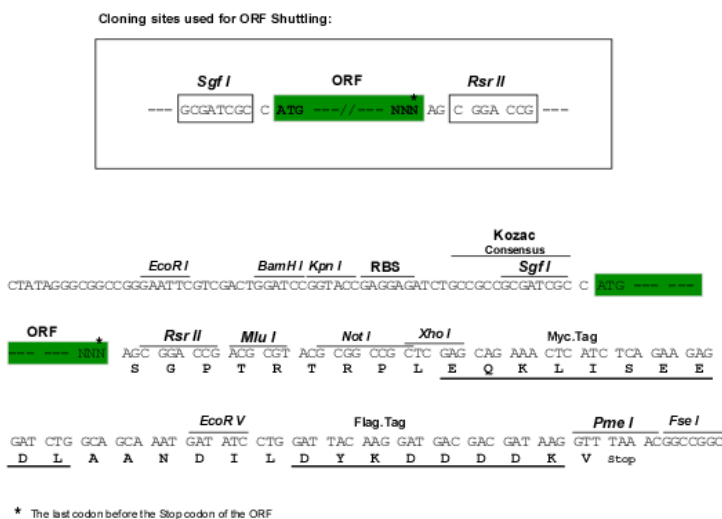


[View online »](#)

Chromatograms: https://cdn.origene.com/chromatograms/mk6615_f12.zip

Restriction Sites: SgfI-RsrII

Cloning Scheme:



ACCN: NM_152371

ORF Size: 594 bp

OTI Disclaimer: The molecular sequence of this clone aligns with the gene accession number as a point of reference only. However, individual transcript sequences of the same gene can differ through naturally occurring variations (e.g. polymorphisms), each with its own valid existence. This clone is substantially in agreement with the reference, but a complete review of all prevailing variants is recommended prior to use. [More info](#)

OTI Annotation: This clone was engineered to express the complete ORF with an expression tag. Expression varies depending on the nature of the gene.

Components: The ORF clone is ion-exchange column purified and shipped in a 2D barcoded Matrix tube containing 10ug of transfection-ready, dried plasmid DNA (reconstitute with 100 ul of water).

Reconstitution Method:

1. Centrifuge at 5,000xg for 5min.
2. Carefully open the tube and add 100ul of sterile water to dissolve the DNA.
3. Close the tube and incubate for 10 minutes at room temperature.
4. Briefly vortex the tube and then do a quick spin (less than 5000xg) to concentrate the liquid at the bottom.
5. Store the suspended plasmid at -20°C. The DNA is stable for at least one year from date of shipping when stored at -20°C.

RefSeq: [NM_152371.2](#)

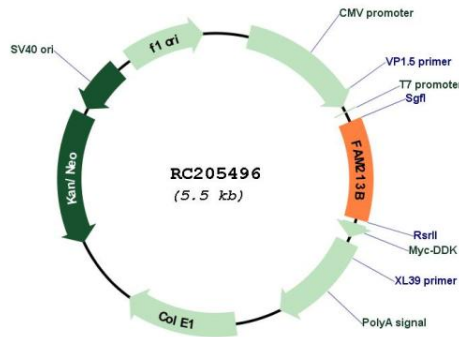
RefSeq Size: 2791 bp

RefSeq ORF: 597 bp

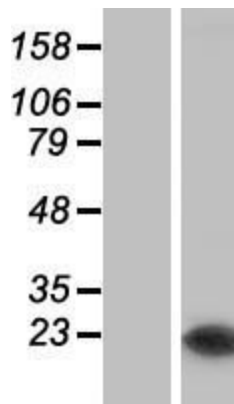
Locus ID: 127281

UniProt ID: [Q8TBF2](#)
Cytogenetics: 1p36.32
MW: 21.2 kDa
Gene Summary: Catalyzes the reduction of prostaglandin-ethanolamide H(2) (prostamide H(2)) to prostamide F(2alpha) with NADPH as proton donor. Also able to reduce prostaglandin H(2) to prostaglandin F(2alpha) (By similarity).[UniProtKB/Swiss-Prot Function]

Product images:



Circular map for RC205496



Western blot validation of overexpression lysate (Cat# [LY407618]) using anti-DDK antibody (Cat# [TA50011-100]). Left: Cell lysates from untransfected HEK293T cells; Right: Cell lysates from HEK293T cells transfected with RC205496 using transfection reagent MegaTran 2.0 (Cat# [TT210002]).