

Product datasheet for **RC205485**

WDR44 (NM_019045) Human Tagged ORF Clone

Product data:

Product Type:	Expression Plasmids
Product Name:	WDR44 (NM_019045) Human Tagged ORF Clone
Tag:	Myc-DDK
Symbol:	WDR44
Synonyms:	RAB11BP; RPH11; SYM-4
Mammalian Cell Selection:	Neomycin
Vector:	pCMV6-Entry (PS100001)
E. coli Selection:	Kanamycin (25 ug/mL)



[View online »](#)

ORF Nucleotide Sequence:

>RC205485 ORF sequence
 Red=Cloning site Blue=ORF Green=Tags(s)

TTTTGTAATACGACTCACTATAGGGCGGCCGGAATTCGTCGACTGGATCCGGTACCGAGGAGATCTGCC
 GCC**CGGATCGCC**

ATGGCGTCGGAAGCGACACCGAGGAATTCATGATGCCCTGAAGATGTGCACCTAGGGGGCGGCTACC
 CCGTGGGGTCTCCAGGAAAAGTTGGGCTTCAACATTCAGGAAACAGAGAACACTGCATACAAAGTTGG
 AAATGAGTCCCCTGTACAAGAATTGAAACAAGATGTGTCTAAAAAGATTATTGAAAGTATTATTAGGAG
 AGTCAGAAAGTACTACAGCTTGAAGATGACTCTTTGGATTCCAAAGGAAAAGAACTCTCTGATCAAGCTA
 CTGCCAGTCTATTGTGGCTAGAACAGATCTGAGCAATATACCCGGACTGTTAGCCATAGATCAAGTACT
 ACCGGAAGAATCCAAAAGGCAGAGAGTCAAGATACATTTGAAGAGACTGAATTAGAATTAATAAATGC
 TTTCTTCTGATGAAACCTGTGAGAACAGTATGAAACCACGAAGTTAACTCAAACAAGTTCAACTG
 AGCAGCTTAATGTGCTTGAAGTGAACAGAAGTATTGAACAAGGAAGCAGTGGAAAGTCAAAGGAGTGG
 TGATGTTTTAGAGCCTGTGCCCTCAGACTCCTTATCTACTAAAGATTTTGCCGCTGTGGAAGAAGTGGCC
 CCTGCCAAACCCCAAGACACCTTACTCCAGAGCCTGATATAGTGGCTAGTACAAAGAAGCCTGTTCCAG
 CACGCCACCTCCTCAACTAATTTCCACCTCCTAGACCCACCTCCTTCTCGACCTGCTCCACCACC
 AAGAAAAGGAAAAGCGAATTGGAATTTGAGACTCTGAAAACCTGATATAGATGTTCCAAAAGAGAAT
 ATTACGCTGATTTCTCTCCTAACCGCAAGCATGGCTTCAGAAAAGTGCAGTTAAGGATTCTCAGCCTTCTC
 TTGATTTGGCAAGTGCTACCAAGTGGAGATAAAATAGTTACCGCCAGGAAAATGGAAAAGCACCTGATGG
 GCAGACTGTAGCAGGTGAAGTATGAGGACCTCAGAGACCTAGATCCAACCTCTGGGAGAGAGCTTACTGAT
 GAGGAAAATTTAGCCAGTGAATGATTAAGAACCTGGATACTGGAGAAGAAAATACCTTTGAGTCTTGCCAG
 AAGAAAACCTACCAACAGGCATTAATCCTCTACTCTACACATCATGAGAAGGACAAAAGAATATGTAAG
 TAATGACGCGGCACAGTCAGATGATGAAGAGAAGTTACAGTCTCAGCCAACAGATACTGATGGTGGAAAGG
 TTAANAACAGAAAACGACTCAACTAAAGAAGTTTCTTGGAAAATCAGTAAAGAGAGCAAAGCACCTTGCTG
 AGGAATATGGTGAACGTGCTATAAATAAAGTTAAAAGTGTAGAGATGAAGTGTTCATACTGATCAAGA
 TGATCCTTCATCAAGTATGATGAAGGAATGCCATACACAAGACCAGTTAAATTCAAAGCAGCACACGGT
 TTTAAAGGACCTTATGATTTTATGATCAGATCAAAGTGGTGAAGATCTTAGTGGTGAACATATGGGAGCTG
 TTTGGACCATGAAATTTCTCACTGTGGCCGATTACTTGCCTCAGCTGGACAAGACAATGTAGTGAAGT
 ATGGGCTTTAAAATGCTTTTACTATTTCAACAATATGCGAATGAAATACAATACTGAAGGACGTGTG
 TCCCATCACCTCTCAGGAAAGTCTAAGTTCATCAAAATCGGATACAGATACAGGGGTATGCAGTGGAA
 CTGATGAAGACCTGATGATAAAAACGCACCTTTTCGGCAACGGCCATTTTGCAATATAAAGGACATAC
 TGCTGATCTCCTTATGATCTTTCATGGTCTAAAACCTACTTTCTTCTTCTTCTTCAATGGATAAAACAGT
 AGATTATGGCACATTTCTCGAAGAGAATGCCTTTGCTGTTTTCAACATATAGATTTTGTCACTGCCATAG
 CTTTTATCCAAGAGATGACAGGATTTTCTAAGTGGGTCTTTGGATGGAAGCTCCGCCTTTGGAACAT
 ACCTGACAAAAAAGTGGCTTTGTGGAATGAAGTAGATGGTCAGACAAAATGATCACAGCTGCAATTTCT
 TGTCAGAAATGGCAAAATATGCAGTATTGGGACATATGATGGCAGATGATTTTCTATGATACAGAGCATT
 TGAATAACCATACAAAATACATGTCCGATCTACTAGAGGGCGCAACAAGTTGGAAGAAAATTTACTGG
 CATTGAGCCTTTACCTGGAGAAAATAAGATATTGGTAACCTCAAATGACTCCAGAATCAGACTATATGAT
 TTGAGAGATTTGTCACTATCCATGAAGTATAAGGGTTACGTCAATAGCAGCAGCCAGATCAAAGCAAGTT
 TCAGCCATGATTTTACTTACCTCGTTAGTGGTTCAGAAGATAAGTATGTTTATATCTGGAGTACCTACCA
 TGACCTAAGCAAGTTTACTTCAGTCAAGAGAGATCGTAATGACTTCTGGGAAGGTATTAAGCCCAAT
 GCAGTTGTTACATCAGCCATCTTTGCACAAAACCAAGTTTGTGTTATCTTTGGATGTGCAATCTGAAA
 AATCAGAAGGGAACGAGAAAAGTGAAGATGCTGAAGTTTTGGATGCCACACCTTCTGGTATTATGAAGAC
 AGATAACACAGAAGTTCTTCTCTGCTGACTTCACTGGAGCAATCAAAGTGTGTTAATAAAAAGAAA
 AATGATCT

ACGCGTACGCGGCCGCTCGAGCAGAACTCATCTCAGAAGAGGATCTGGCAGCAAATGATATCCTGGATT
 ACAAGGATGACGACGATAAAGTTTAA

Protein Sequence: >RC205485 protein sequence
 Red=Cloning site Green=Tags(s)

MASESDTEEFYDAPEDVHLGGGYPVGGSPGKVLSTFKETENTAYKVGNESPVQELKQDVSKKIIIESIIIE
 SQKVLQLEDDSLDSKGKELSDQATASPIVARTDL SNIPGLLAIDQVLPEESQKAESQNTFEETELELKKC
 FPSDETCEKPVDETTKL TQTSSTEQLNVLLETETEVLNKEAVEVKGGDVLPEVPSDSLSTKDFAAVEEVA
 PAKPPRHLTPEPDIVASTKKVPARPPPTNFPPPPPPSRPAPPPrKRKSELEFETLKTDPIDVPKEN
 ITSDSLLTASMESAVKDSQPSLDLASATSGDKIVTAQENGKAPDGQTVAGEVMGPQRPRSNSGRELTD
 EEILASVMIKNLDTGEEIPLSLAEEKLP TGINPLTLHIMRRTKEYVSNDAQAQSDDEEKLSQOPTD TDGGR
 LKQKTTQLKKFLGKSVKRAKHLAEEYGERAINVKSVRDEVFHTDQDDPSSSDDEGMPYTRPVKFAAHG
 FKGPYDFDQIKVVQDLSGEHMGA VWTMFKSHCGRLLASAGQDNVRIWALKNAFDYFNNMRMYNTEGRV
 SPSPSQESLSSSKSDTDGVCSGTDED PDDKNAPFRQRPFCYKYGHTADLLDL SWSKNYFLLSSSMDKTV
 RLWHISRRECLCCFQHIDFVTAIAFHPRDDRYFLSGSLDGKLR LWNIPDKKVALWNEVDGQTKLIT AANF
 CQNGKYAVIGTYDGRCIFDYDEHLKYHTQIHVRSTRGRNKVGRKITGIEPLGENKILVTSNDSRIRLYD
 LRDL SLMKYKGYVNSSSQIKASF SHDFTYLVSGSEDKYVYI WSTYHDL SKFTSVRRDRNDFWEGIKAHN
 AVVTS AIFAPNP SMLSLDVQSEKSEGNEKSEDAEVL DATPSGIMKT DNTDEVLLSADFTGAIKVFV NKRK
 NVS

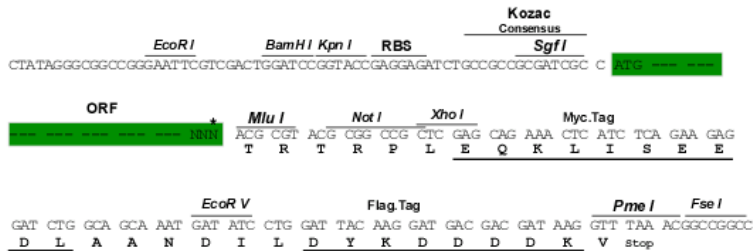
TRTRPLEQKLISEEDLAANDILDYKDDDDKV

Chromatograms: https://cdn.origene.com/chromatograms/mk6201_c04.zip

Restriction Sites: SgfI-MluI

Cloning Scheme:

Cloning sites used for ORF Shuttling:



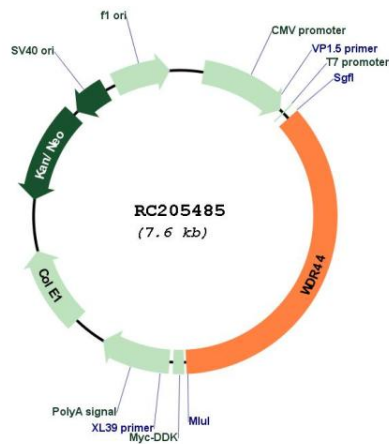
* The last codon before the Stop codon of the ORF

ACCN: NM_019045

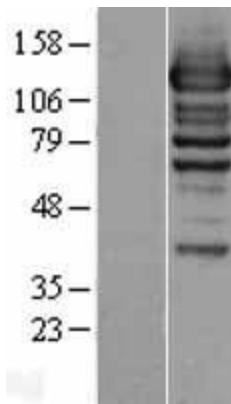
ORF Size: 2739 bp

OTI Disclaimer:	The molecular sequence of this clone aligns with the gene accession number as a point of reference only. However, individual transcript sequences of the same gene can differ through naturally occurring variations (e.g. polymorphisms), each with its own valid existence. This clone is substantially in agreement with the reference, but a complete review of all prevailing variants is recommended prior to use. More info
OTI Annotation:	This clone was engineered to express the complete ORF with an expression tag. Expression varies depending on the nature of the gene.
Components:	The ORF clone is ion-exchange column purified and shipped in a 2D barcoded Matrix tube containing 10ug of transfection-ready, dried plasmid DNA (reconstitute with 100 ul of water).
Reconstitution Method:	<ol style="list-style-type: none">1. Centrifuge at 5,000xg for 5min.2. Carefully open the tube and add 100ul of sterile water to dissolve the DNA.3. Close the tube and incubate for 10 minutes at room temperature.4. Briefly vortex the tube and then do a quick spin (less than 5000xg) to concentrate the liquid at the bottom.5. Store the suspended plasmid at -20°C. The DNA is stable for at least one year from date of shipping when stored at -20°C.
RefSeq:	NM_019045.5
RefSeq Size:	4160 bp
RefSeq ORF:	2742 bp
Locus ID:	54521
UniProt ID:	Q5JSH3
Cytogenetics:	Xq24
Domains:	WD40
MW:	101.3 kDa
Gene Summary:	This gene encodes a protein that interacts with the small GTPase rab11. A similar protein in rat binds the GTP-containing active form of rab11. This protein may play a role in endosome recycling. Alternate splicing results in multiple transcript variants.[provided by RefSeq, May 2010]

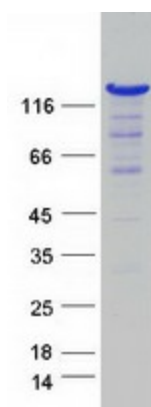
Product images:



Circular map for RC205485



Western blot validation of overexpression lysate (Cat# [LY402730]) using anti-DDK antibody (Cat# [TA50011-100]). Left: Cell lysates from untransfected HEK293T cells; Right: Cell lysates from HEK293T cells transfected with RC205485 using transfection reagent MegaTran 2.0 (Cat# [TT210002]).



Coomassie blue staining of purified WDR44 protein (Cat# [TP305485]). The protein was produced from HEK293T cells transfected with WDR44 cDNA clone (Cat# RC205485) using MegaTran 2.0 (Cat# [TT210002]).